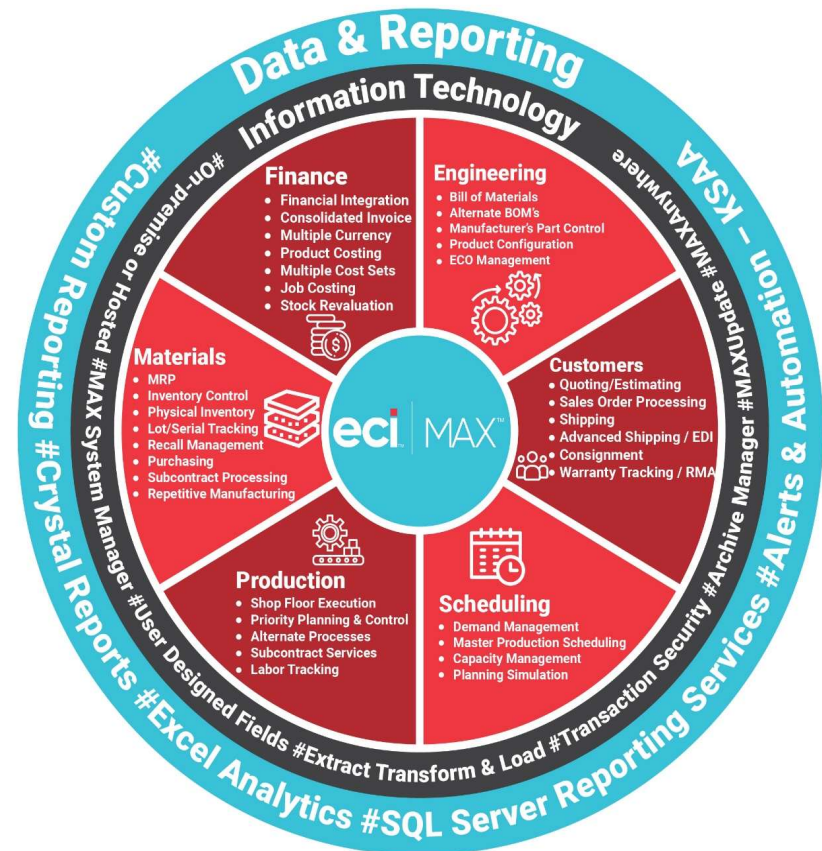


Code	Department / Module	# Docs
<b>00</b>	<b>Background</b>	7
	00- Professional Services	
	01- MAX ERP System	
	02- Manufacturing Control Systems	
	03- Manufacturing Environments	
<b>01</b>	<b>Engineering</b>	31
	01- Bills of Material	
	02- Manufacturer's Part Control	
	03- Product Configurator	
	04- ECO Manager	
<b>02</b>	<b>Customers</b>	67
	01- Sales Order Processing	
	02- Quoting & Estimating	
	03- Small Package Shipping	
	04- Advanced Shipping	
	05- Warranty Tracking	
	06- Electronic Data Interchange	
<b>03</b>	<b>Scheduling</b>	23
	01- Demand Management	
	02- Fundamentals of Planning	
	03- Master Scheduling	
	04- Capacity Management	
	05- Simulation	
<b>04</b>	<b>Production</b>	37
	01- Shop Floor Execution	
	02- Subcontract processing	
	03- Labor Tracking	
<b>05</b>	<b>Materials - Inventory Control</b>	104
	01- Inventory Management	
	MAX Data Collection Transactions	
	02- Physical Inventory	
	03- Cycle Counting	
	04- Advanced Inventory Management	
	05- Lot & Serial Tracking	
	06- Materials Requirements Planning - Setup	
	07- Materials Requirements Planning - Operation	
	<b>08- Purchasing Control</b>	40
	09- Repetitive Manufacturing	
	10- Quality Functions	



Codes refer to the position in the ERP Systems Overview model (shown above).  
 Departments (in bold) refer to each section of the model.  
 Subsections refer to actual MAX modules.  
 Counts are for documents immediately available. Many more are in process.

<b>06</b>	<b>Finance</b>	57
	01- General Ledger Accounting	
	02- Operational Accounting	
	03- Product Costing	
	04- Financial Reporting	
	05- Advanced Financial Issues	
<b>07</b>	<b>Information Technology</b>	20
	01- System Manager - All Users	
	02- System Manager	
	03- Archive Manager	
	04- MDCM (Server Side)	
	05- Partner Products	
	06- SQL Server Administration	
	07- Custom Solutions	
<b>08</b>	<b>Data &amp; Reporting</b>	18
	DR- Reporting	
	RPT-C- Crystal Reports	
	RPT-D- Data Structures	
	RPT-E- Microsoft Excel & MAX	
	RPT-S- SSRS and MAX	
	RPT-K- KnowledgeSync & MAX	
	<b>Totals</b>	<b>404</b>