



# DEFY THE ELEMENTS

**NEW!**

**NIKE HOODED SOFT SHELL JACKET  
NKDR1543 \$120.00 (R)**

Take your outdoor workouts to the next level. This smooth, water-repellent soft shell has plenty of stretch and features a soft interior. It helps keep the elements out, while effectively managing moisture. The design features a three-panel hood and zippered mesh-lined pockets. The contrast heat transfer Swoosh logo is on the left sleeve. Made of 8-ounce, 92/8 polyester/elastane fabric with a durable water-repellent (DWR) coating.

ADULT SIZES: XS-4XL

Black

**YOUR PRICE: \$109 + Logo**



**Apex Promo Sports**

**[www.ApexPromoSports.com](http://www.ApexPromoSports.com)**

**(512) 431-9900**

**[Lindsay.Bowman@PGA.com](mailto:Lindsay.Bowman@PGA.com)**

To protect its reputation and identity, Nike reserves the right to prohibit the addition to any Nike garment of any trademark, name, design or logo of an organization, business, school or team (or for an individual or other entity) that does not meet certain standards. Please contact your representative with any questions. The decoration of any Nike garment with the proprietary mark, name or logo of any professional athletic organization, collegiate institution or high school without the prior written authorization of both the owner of such mark, name or logo and Nike is expressly prohibited. Nike products may not be resold without embellishment.





**NEW!**

**NIKE STORM-FIT FULL-ZIP JACKET**

**NKDX6716** \$90.00 (R) **YOUR PRICE: \$84 + Logo**

Designed with Storm-FIT technology to shield you from wind and rain, this sporty performance jacket has stretch for movement. Features a zip-through collar, side pockets and elastic cuffs. The contrast heat transfer Swoosh logo is on the left sleeve. A contrast heat transfer Storm-FIT logo is on the left hem. Made of 3.7-ounce, 100% polyester with a durable water-repellent (DWR) coating and mesh lining.

ADULT SIZES: XS-4XL



**NEW!**

**NIKE TEXTURED 1/2-ZIP COVER-UP**

**NKDX6702** \$75.00 (R) **YOUR PRICE: \$69 + Logo**

This slightly brushed, textured, breathable cover-up is a comfortable layering option for the office or afterhours. The design includes a notched, zip-through collar, contrasting black Vislon® zipper and an open drop tail hem. The contrast Swoosh logo is embroidered on the left sleeve. Made of 6.3-ounce, 100% polyester fabric.

ADULT SIZES: XS-4XL







BLACK



ANTHRACITE



MIDNIGHT  
NAVY



GAME ROYAL



WHITE



LIGHT  
GAME  
ROYAL  
HEATHER



DARK GREY  
HEATHER



# JOIN THE NIKE CLUB



## NEW!

### NIKE CLUB FLEECE SLEEVE SWOOSH 1/2-ZIPS

Built with versatility in mind, these brushed-back 1/2-zips have an elevated look which makes them perfect for work or play. They're a sustainable choice with recycled polyester and organic cotton in the blend. Design details include a zip-through collar with dyed-to-match zipper. Rib knit cuffs and hem. A contrast Swoosh logo is embroidered on left sleeve. Made of 8.3-ounce, 72/20/8 cotton/recycled polyester/organic cotton.

### CLUB FLEECE SLEEVE SWOOSH 1/2-ZIP

NKDX6718 \$55.00 (R) **YOUR PRICE: \$52 + Logo**

- Side pockets
- ADULT SIZES: XS-4XL

### LADIES CLUB FLEECE SLEEVE SWOOSH 1/2-ZIP

NKDX6720 \$55.00 (R) **YOUR PRICE: \$52 + Logo**

- Front pouch pocket
- LADIES SIZES: S-2XL





# A VICTORY FOR SUSTAINABILITY

## NEW!

### NIKE VICTORY SOLID POLOS

Built from 100% recycled polyester fabric, Nike scores a victory for sustainability and performance in these sophisticated polos engineered with Dri-FIT moisture management technology. Details include dyed-to-match buttons with 60% recycled content, open hem sleeves and an open hem. A contrast heat transfer Swoosh logo is on the left sleeve. Made of 4-ounce, 100% recycled polyester.

#### VICTORY SOLID POLO

**NKDX6684 \$58.00 (R) YOUR PRICE: \$55 + Logo**

- Flat knit collar and two-button placket
- ADULT SIZES: XS-4XL

#### LADIES VICTORY SOLID POLO

**NKDX6685 \$58.00 (R) YOUR PRICE: \$55 + Logo**

- Self-fabric collar and four-button placket
- LADIES SIZES: S-2XL



BLACK

COLLEGE NAVY

LIGHT PHOTO BLUE

COOL GREY

UNIVERSITY RED



# TRUE VAPOR POWER



## NEW!

**NIKE VAPOR DASH POLO**  
NKDX6688 \$68.00 (R) **YOUR PRICE: \$65 + Logo**

For true work-to-weekend versatility, this breathable, subtly textured polo is built to perform with Dri-FIT moisture management technology to help you stay dry and comfortable. Features a self-fabric collar and two-button placket. Rolled-forward shoulder seams, open hem sleeves and open hem. A contrast 3D silicone Swoosh logo is on the left sleeve. Made of 5.3-ounce, 87/13 polyester/elastane. ADULT SIZES: XS-4XL

COOL GREY

VALOR BLUE

ANTHRACITE

BLACK



# THE BEST JUST GOT BETTER

- 5-STYLE COLLECTION TO MIX AND MATCH
- UPDATED DESIGN LINES DELIVER MORE-FLATTERING FIT
- MADE-TO-MOVE MICRO PIQUE FABRIC
- UNRIVALED DRI-FIT TECHNOLOGY
- 20 COLORS IN THE OFFERING
- MODERN PEARLIZED BUTTONS

## NIKE DRI-FIT MICRO PIQUE 2.0 POLOS

The best-selling Nike polo just got better. Still engineered from soft, stretchable micro pique fabric, the Nike Dri-FIT Micro Pique 2.0 Polo is now 5 styles strong. It delivers unparalleled comfort with Dri-FIT moisture management technology and features updated design lines and fit. Rolled-forward shoulder seams, open hem sleeves and open hem. Contrast Swoosh logo is embroidered on the left sleeve. Made of 4.3-ounce, 100% polyester Dri-FIT fabric.

## DRI-FIT MICRO PIQUE 2.0 POLO

**NKDC1963 \$39.98 + Logo**

Features a flat knit collar and three-button placket. White or black pearlized buttons selected to complement the shirt color.

ADULT SIZES: XS-4XL

### TALL SIZES LT-4XLT

Tall Colors: White, Anthracite, Black, Valor Blue, Navy, Game Royal, Gym Blue, University Red, Cool Grey

## LADIES DRI-FIT MICRO PIQUE 2.0 POLO

**NKDC1991 \$39.98 + Logo**

Tailored for a feminine fit with a self-fabric collar, open neckline and side vents.

LADIES SIZES: S-2XL



## DRI-FIT MICRO PIQUE 2.0 POCKET POLO

**NKDC2103 \$39.98 + Logo**

Features a flat knit collar, three button placket and left chest pocket. White or black pearlized buttons selected to complement the shirt color.

ADULT SIZES: XS-4XL

Colors: Black, Navy, Anthracite, Game Royal, White, University Red, Gym Blue

## DRI-FIT MICRO PIQUE 2.0 LONG SLEEVE POLO

**NKDC2104 \$47.98 + Logo**

Features a flat knit collar and three-button placket. White or black pearlized buttons selected to complement the shirt color.

ADULT SIZES: XS-4XL

Colors: Black, Navy, Anthracite, Game Royal, White, University Red, Gym Blue

## LADIES DRI-FIT MICRO PIQUE 2.0 LONG SLEEVE POLO

**NKDC2105 \$47.98 + Logo**

Tailored for a feminine fit with a self-fabric collar, open neckline, longer length, high-low hem and side vents.

LADIES SIZES: S-2XL

Colors: Black, Navy, Anthracite, Game Royal, White, University Red, Gym Blue

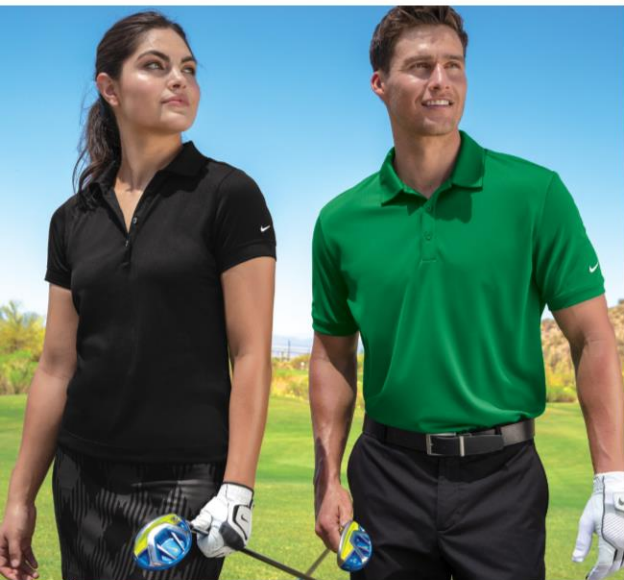


POLOS/KNITS





# CHOOSE YOUR COLLAR & FIT



## NIKE DRI-FIT PLAYERS MODERN FIT POLOS

These polos deliver timeless style and performance with ultrasoft double pique and Dri-FIT moisture management technology. Design features include a streamlined self-fabric collar and open hem sleeves. A contrast metallic silver heat transfer Swoosh logo is on the left sleeve. Made of 6-ounce, 100% polyester Dri-FIT fabric.

### DRI-FIT PLAYERS MODERN FIT POLO

**799802** ~~\$60.00~~ **\$55.00 + Logo**

Three-button placket. Modern fit is slightly tailored through the chest, arms and waist.

ADULT SIZES: XS-4XL

### LADIES DRI-FIT PLAYERS MODERN FIT POLO

**811807** ~~\$60.00~~ **\$55.00 + Logo**

Tailored for a feminine fit with a five-button placket.

LADIES SIZES: S-2XL



## NIKE CLASSIC FIT DRI-FIT PLAYERS POLO WITH FLAT KNIT COLLAR

**838956** ~~\$62.00~~ **\$56.00 + Logo**

Engineered for the course and beyond, this performance style has a flat knit collar for a classic look. Unparalleled Dri-FIT moisture management technology delivers optimal breathability. Design features include a three-button placket and open hem sleeves. A contrast heat transfer Swoosh design trademark is on the left sleeve. Made of 6-ounce, 100% polyester Dri-FIT fabric. Classic fit is fuller through the chest, arms and waist.

ADULT SIZES: XS-4XL



799802 & 811807  
SELF-FABRIC  
COLLAR  
MODERN FIT

838956  
FLAT KNIT  
COLLAR  
CLASSIC FIT

PINE GREEN

PINE GREEN

WHITE

WHITE

BLACK

BLACK

TEAM RED  
(NOT AVAILABLE IN 811807)

UNIVERSITY RED

GYM BLUE

GYM BLUE

ANTHRACITE

NAVY

ANTHRACITE



# UNPARALLELED VERTICAL MESH

POLOS/KNITS

## NIKE DRI-FIT VERTICAL MESH POLOS

Designed for the ultimate in performance, this polo has a soft drape and vertical mesh texture. Dri-FIT moisture management technology provides breathable comfort during and after play. Made of 4.4-ounce, 100% polyester Dri-FIT fabric.

## DRI-FIT VERTICAL MESH POLO

637167 ~~\$46.00~~ **\$39.98 + Logo**  
Features a self-fabric collar and three-button placket. A contrast Swoosh logo is embroidered on the left sleeve.

ADULT SIZES: XS-4XL

## LADIES DRI-FIT VERTICAL MESH POLO

637165 ~~\$46.00~~ **\$39.98 + Logo**  
Tailored for a feminine fit with a Johnny collar. A contrast Swoosh logo is embroidered on the left hem.

LADIES SIZES: S-2XL







# A NEW LEGEND IN THE MAKING

MADE FOR LEGENDS LIKE YOU,  
THE NEW rLEGEND TEES ARE  
MADE WITH 100% RECYCLED  
POLYESTER—PLUS THEY OFFER  
TWO PLACEMENT OPTIONS FOR  
THE ICONIC NIKE SWOOSH.











# SUSTAINABILITY IN MIND







**NEW!**

**NIKE rLEGEND TEES**

This is the stuff of which legends are made. The all-new Team rLegend Tee is made with 100% recycled polyester and powered by Dri-FIT technology—so you'll get peak performance with less impact on the planet. Neck tape for durability. Heat-transfer label for tag-free comfort. A contrast heat transfer Swoosh logo on left chest. Made of 4-ounce, 100% recycled polyester jersey.

**SWOOSH SLEEVE rLEGEND TEE**

**NKDX8730** \$28.00 (R) **YOUR PRICE: \$27.00 + Screen Print**

- A contrast heat transfer Swoosh logo on left sleeve.

ADULT SIZES: S-4XL

**LADIES SWOOSH SLEEVE rLEGEND TEE**

**NKDX8734** \$28.00 (R) **YOUR PRICE: \$27.00 + Screen Print**

- A contrast heat transfer Swoosh logo on left sleeve.

LADIES SIZES: S-2XL

**YOUTH SWOOSH SLEEVE rLEGEND TEE**

**NKDX8787** \$23.00 (R) **YOUR PRICE: \$22.00 + Screen Print**

- A contrast heat transfer Swoosh logo on left sleeve.

YOUTH SIZES: XS-XL

**TEAM rLEGEND TEE**

**DV7299** \$28.00 (R) **YOUR PRICE: \$27.00 + Screen Print**

- A contrast heat transfer Swoosh logo on left chest.

ADULT SIZES: S-4XL

**LADIES TEAM rLEGEND TEE**

**DV7312** \$28.00 (R) **YOUR PRICE: \$27.00 + Screen Print**

- A contrast heat transfer Swoosh logo on left chest.

LADIES SIZES: S-2XL

**YOUTH TEAM rLEGEND TEE**

**DV7317** \$23.00 (R) **YOUR PRICE: \$22.00 + Screen Print**

- A contrast heat transfer Swoosh logo on left chest.

YOUTH SIZES: XS-XL



BLACK

COURT PURPLE

DARK SMOKE HEATHER (NKDX8730, NKDX8734 & NKDX8787 ONLY)

DEEP MAROON

TEAM MAROON

UNIVERSITY RED

DESERT ORANGE

CARBON HEATHER (DV7299, DV7312 & DV7317 ONLY) SWOOSH ON LEFT CHEST

COLLEGE NAVY

GORGE GREEN

APPLE GREEN

GAME ROYAL

VALOR BLUE

WHITE





TEAM DARK GREEN



TEAM ROYAL



TEAM ANTHRACITE



TEAM DARK MAROON



TEAM BLACK



TEAM NAVY



TEAM SCARLET

**NIKE THERMA-FIT PULLOVER FLEECE HOODIE**

CN9473 ~~\$58.00 (R)~~ **\$57.00 + Logo**

Nike has elevated the classic hoodie by improving this year-round essential with incredibly warm Therma-FIT fabric which breathes and manages moisture. The design includes a three-panel hood, front pouch pocket and open cuffs. The contrast heat transfer Swoosh design trademark is on the right chest. Made of 7.4-ounce, 100% polyester Therma-FIT fabric.

ADULT SIZES: S-4XL

*Prices (R) apply to sizes S-XL and are subject to change. Please inquire for pricing on larger sizes.*







GAME ROYAL/  
DARK GREY HEATHER

GYM BLUE/  
GYM BLUE

BLACK/BLACK

DARK GREY HEATHER/  
DARK GREY HEATHER

ANTHRACITE/  
ANTHRACITE

MIDNIGHT NAVY/  
MIDNIGHT NAVY

BLACK/  
DARK GREY  
HEATHER

GYM RED/  
DARK GREY  
HEATHER

### NIKE THERMA-FIT 1/2-ZIP FLEECE

NKAH6254 ~~\$80.00~~ **\$72.00+ Logo**

Designed for warmth and built for performance, this moisture-wicking Nike Therma-FIT style features a zip-through collar, reverse coil zipper, raglan sleeves, open cuffs and an open hem with side vents. The contrast heat transfer Swoosh design trademark is on the left sleeve. Made of 7-ounce, 100% polyester Therma-FIT fabric.

ADULT SIZES: XS-4XL

### NIKE THERMA-FIT FULL-ZIP FLEECE

Designed to help keep you warm during cold-weather workouts, these breathable Nike Therma-FIT styles manage moisture to perform. They're designed with a zip-through collar, reverse coil zippers, front zippered pockets and open cuffs. The contrast heat transfer Swoosh design trademark is on the left sleeve. Made of 7-ounce, 100% polyester Therma-FIT fabric.

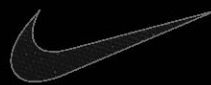
**THERMA-FIT FULL-ZIP FLEECE**  
NKAH6418 ~~\$99.00~~ **\$82.00+ Logo**

ADULT SIZES: XS-4XL

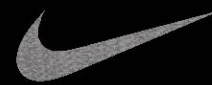
**LADIES THERMA-FIT FULL-ZIP FLEECE**  
NKAH6260 ~~\$85.00~~ **\$77.00+ Logo**

Tailored for a feminine fit.

LADIES SIZES: S-2XL



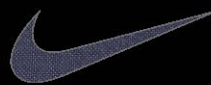
BLACK



DARK GREY HEATHER



ANTHRACITE



MIDNIGHT NAVY



GAME ROYAL



VIVID PINK HEATHER  
(NKAH6260 ONLY)



# DRI-FIT STRETCH FOR FULL MOTION

## NIKE DRI-FIT STRETCH 1/2-ZIP COVER-UPS

Built for the course, the gym or just around town, this cover-up performs with comfortable stretch for uninhibited movement and Dri-FIT moisture management technology for exceptional cooling. The design includes a contrast collar and zipper, open cuffs and an open hem. The contrast Swoosh design trademark is embroidered on the upper left sleeve. Made of 7.6-ounce, 93/7 polyester/spandex Dri-FIT fabric.

### DRI-FIT STRETCH 1/2-ZIP COVER-UP

779795 ~~\$95.00~~ **\$85.00+ Logo**

ADULT SIZES: XS-4XL

### LADIES DRI-FIT STRETCH 1/2-ZIP COVER-UP

779796 ~~\$95.00~~ **\$85.00+ Logo**

Tailored for a feminine fit. Thumbholes at cuffs for warmth and enhanced fit.

LADIES SIZES: S-2XL



ADULT

BLACK/DARK GREY

DEEP ROYAL BLUE/BLACK

BLACK/DARK GREY/GYM RED

DARK GREY/COOL GREY/VOLT

FLEECE/SWEATSHIRTS



LADIES

BLACK/DARK GREY

DARK GREY/WHITE

WHITE/DARK GREY





**NEW!**  
**NIKE DRI-FIT LEGACY CAP**  
**NKFB6447 \$24.00 (R)**

With a smooth front panel and stretch for comfort, this moisture-wicking cap continues a legacy of performance. This popular cap has been modernized from its original 1991 design with lightly structured front panels and unstructured mid and back panels. Features a mid-profile and a hook and loop closure. The contrast Swoosh logo is embroidered on the bill. Made of 5.6-ounce, 90/10 polyester/spandex.

- WHITE
- COOL GREY/ DARK GREY
- ANTHRACITE
- DARK GREY/ WHITE
- BLACK
- BLACK/ WHITE
- VALOR BLUE
- GAME ROYAL
- GAME ROYAL/ WHITE
- NAVY
- NAVY/ WHITE
- UNIVERSITY RED
- TEAM MAROON
- DEEP MAROON
- COURT PURPLE
- APPLE GREEN
- GORGE GREEN
- DESERT ORANGE
- KHAKI

**YOUR PRICE: \$22.00 + LOGO**

# UNRIVALED NIKE PERFORMANCE CAPS



**NEW!**  
**NIKE DRI-FIT SWOOSH PERFORMANCE CAP**  
**NKFB6450 \$24.00 (R)**

The contrast welded Swoosh logo takes front and center on this unstructured, moisture-wicking cap. A low-profile, contrast underbill and hook and loop closure complete the sporty design. Made of 100% Dri-FIT polyester.

- WHITE
- ANTHRACITE
- BLACK
- GAME ROYAL
- LUCKY GREEN

**YOUR PRICE: \$22.00 + LOGO**





**NEW!**  
**NIKE DRI-FIT STRETCH MESH SANDWICH BILL CAP**

**NKFD9718 \$24.00 (R)**  
 Only Nike could engineer a moisture-wicking cap this flexible and stylish. This cap has a structured, mid-profile design. The Swoosh Flex sweatband ensures an exceptional fit. The contrast Swoosh logo is embroidered on the bill and center back in the same color as the trim. Made of 100% polyester knit mesh.

ADULT SIZES: S/M, M/L, L/XL



WHITE/BLACK

ANTHRACITE/WHITE

BLACK/WHITE



GAME ROYAL/WHITE

NAVY/WHITE

UNIVERSITY RED/WHITE

**YOUR PRICE: \$22.00 + LOGO**



**NEW!**  
**NIKE DRI-FIT TECH FINE-RIPSTOP CAP**

**NKFB6444 \$24.00 (R)**  
 This durable lightly structured, low-profile ripstop cap delivers ultimate comfort thanks to Dri-FIT moisture-wicking technology, embroidered eyelets for enhanced breathability and a soft hook and loop closure. An Anthracite underbill reduces sun glare. The contrast Swoosh logo is embroidered on center back. Made of 91/9 polyester ripstop/spandex.



WHITE

COOL GREY

ANTHRACITE

BLACK



PHOTO BLUE

GYM BLUE

NAVY

TEAM RED



VIVID PINK

TIDAL BLUE

LUCID GREEN

UNIVERSITY RED

**YOUR PRICE: \$22.00 + LOGO**



**NEW!**  
**NIKE DRI-FIT PERFORMED PERFORMANCE CAP**

**NKFB6445 \$26.00 (R)**  
 Maximum breathability is achieved with Dri-FIT moisture management technology and perforated mid and back panels. A contrast underbill reduces sun glare. This cap has an unstructured, low-profile design with a hook and loop closure. The contrast Swoosh logo is embroidered on the bill and center back. Made of 100% Dri-FIT polyester.



WHITE/BLACK

ANTHRACITE/WHITE

BLACK/WHITE



GAME ROYAL/WHITE

NAVY/WHITE

UNIVERSITY RED/WHITE

**YOUR PRICE: \$24.00 + LOGO**





**NEW!**  
**NIKE DRI-FIT  
FEATHERLIGHT  
PERFORMANCE CAP**

**NKFB5666 \$28.00 (R)**

Stay cool, covered and comfortable in this unstructured, low-profile cap. Nike AeroBill technology integrates proprietary lightweight construction with breathable, sweat-wicking fabric for enhanced comfort and reduced distraction. A hook and loop closure with pull tab ensures a custom fit. The contrast Swoosh logo is embroidered on the left-side middle panel. Made of 100% Dri-FIT polyester twill.



**YOUR PRICE: \$26.00 + LOGO**



**NEW!**  
**NIKE UNSTRUCTURED  
COTTON/POLY TWILL CAP**

**NKFB6449 \$22.00 (R)**

The perfect classic look with a contrast underbill as engineered by Nike. This cap has an unstructured, mid-profile design and a self-fabric closure with buckle. The contrast Swoosh logo is embroidered on the center back. Made of 58/42 cotton/poly twill.



**YOUR PRICE: \$21.00 + LOGO**



**NEW!**  
**NIKE HERITAGE COTTON  
TWILL CAP**

**NKFB5677 \$24.00 (R)**

Made from durable cotton twill, this unstructured, mid-profile cap has embroidered eyelets for enhanced breathability. Interior taping gives a comfortable fit. Closes with an adjustable self-fabric with metal slider. The contrast Swoosh logo is embroidered on the left-side middle panel. Made of 100% cotton twill.



**YOUR PRICE: \$22.00 + LOGO**





**NEW!**  
**NIKE SPHERE  
 PERFORMANCE CAP**

**NKFD9709** \$24.00 (R)  
 Nike Sphere Dry technology ensures maximum moisture control and quick-drying performance. This cap has an unstructured, low-profile design with a hook and loop closure. The contrast Swoosh logo is embroidered on the bill and center back. Made of 100% polyester.



WHITE



WHITE/BLACK



BIRCH



GAME ROYAL/  
 WHITE



NAVY



ANTHRACITE



BLACK/WHITE



BLACK/GYM RED



BLACK

**YOUR PRICE: \$22.00 + LOGO**



**NEW!**  
**NIKE STRETCH-TO-FIT  
 MESH BACK CAP**

**NKFB6448** \$25.00 (R)  
 Comfort, style and function converge in this structured, mid-profile design. A contrast underbill reduces sun glare, while the Swoosh Flex sweatband ensures exceptional fit. The contrast Swoosh logo is embroidered on the bill and center back. Made of 83/14/3 nylon/cotton/spandex.

ADULT SIZES: S/M, M/L, L/XL



WHITE/WHITE



BLACK/WHITE



BLACK/BLACK



COOL GREY/  
 WHITE



ANTHRACITE/  
 WHITE



GYM BLUE/WHITE



NAVY/WHITE



TEAM RED/WHITE



BLACK/GAME  
 ROYAL

**YOUR PRICE: \$23.00 + LOGO**



**NEW!**  
**NIKE SNAPBACK MESH  
 TRUCKER CAP**

**NKFN9893** \$28.33 (R)  
 With its structured, mid-profile look, this sustainable trucker cap has ultra-breathable mesh panels and a 7-position adjustable snapback closure for the perfect fit. Features an embroidered Swoosh logo on the left-side middle panel. Made of 100% recycled polyester front and mid panels and 100% recycled mesh back panels.



WHITE/WHITE



COOL GREY/WHITE



BLACK/BLACK



BLACK/WHITE



BLACK/DARK GREY



NAVY/NAVY



NAVY/WHITE



GAME ROYAL/WHITE



ANTHRACITE/ANTHRACITE



ANTHRACITE/WHITE

**YOUR PRICE: \$26.00 + LOGO**





WHITE



KHAKI



VALOR BLUE



GAME ROYAL



COLLEGE NAVY



UNIVERSITY RED



ANTHRACITE



BLACK

**NEW!**  
**NIKE DRI-FIT TEAM PERFORMANCE VISOR**  
**NKFB5675 \$22.00 (R)**

This lightweight, three-panel visor features a pre-curved bill and an interior Dri-FIT performance sweatband that folds down for easy embroidery. Hook and loop closure. The contrast Swoosh logo is embroidered on the left-side panel. Made of 100% Dri-FIT polyester twill.

**YOUR PRICE: \$21.00 + LOGO**



WHITE



VIVID PINK



NAVY



BLACK

**NEW!**  
**NIKE DRI-FIT ACE VISOR**  
**NKFB6446 \$20.00 (R)**

A high-performance, three-panel visor built with Dri-FIT moisture management technology. Contrast stitching adds interest, while the hook and loop closure ensures a custom fit. The contrast Swoosh logo is embroidered on the bill. Front panel measures approximately 1.875" h x 10" w. Made of 100% Dri-FIT polyester twill.

**YOUR PRICE: \$19.00 + LOGO**

**NEW!**  
**NIKE SWOOSH BUCKET HAT**  
**NKBFN6319 \$28.00 (R)**

With 360-degree coverage, this bucket hat looks cool while it helps keep you cool. Features an embroidered Swoosh logo on the side. Made of 100% recycled polyester twill.

ADULT SIZES: S, M, L

**YOUR PRICE: \$26.00 + LOGO**



WHITE



KHAKI



GAME ROYAL



ANTHRACITE



BLACK







MEDIUM GREY



ANTHRACITE



BLACK



GAME ROYAL



COLLEGE NAVY



UNIVERSITY RED



GORGE GREEN

**NEW!**

**NIKE TEAM CUFFED BEANIE**

**NKFB6539 \$26.00 (R)**

ONE SIZE FITS MOST

This warm beanie is perfect for the stands or the street. The contrast high-density Swoosh logo is embroidered on the adjustable cuff. Made of 100% Dri-FIT acrylic.

**YOUR PRICE: \$24.00 + LOGO**



SUMMIT WHITE



DARK GREY



BLACK HEATHER



GYM BLUE



MIDNIGHT NAVY



BLACK

**NEW!**

**NIKE TERRA BEANIE**

**NKFN6310 \$28.00 (R)**

ONE SIZE FITS MOST

This sustainable, street-ready beanie features a loose 1x1 rib knit, an adjustable cuff and a woven Swoosh label. Made of 100% recycled polyester.

**YOUR PRICE: \$26.00 + LOGO**





NKDH7709

## Nike Brasilia Medium Backpack



BLACK



MIDNIGHT NAVY



FLINT GREY

This versatile backpack is ideal for packing everything you need to get you through a busy training day or when you're away from your locker, gym or home.

- 100% recycled polyester doobby
- Back panel and shoulder straps are padded for comfortable carrying
- Multiple pockets provide organized small-item storage
- Zippered main compartment offers spacious and secure storage
- Plush-lined, zippered pocket for headphones or electronics
- Padded sleeve safely stores a laptop
- A water-resistant coating on bottom panel helps keep gear dry
- Contrast Swoosh design trademark
- Laptop sleeve fits most 15" laptops
- Dimensions: 18"h x 12"w x 7"d; Approx. 1,465 cubic inches

Note: Bags not intended for use by children 12 and under.

**YOUR PRICE: \$49.60 + LOGO**

**\$43.50 + Logo if order of 72 or more**







**Apex Promo Sports**  
**www.ApexPromoSports.com**  
**(512) 431-9900**  
**Lindsay.Bowman@PGA.com**  
**3112 Dawn Mesa Court**  
**Round Rock, TX 78665**

**SPECIAL APEX PROMO SPORTS PRICING**

- \* Minimum order is 12 pieces for embroidered apparel.
- \* Minimum order is 24 pieces for screen print apparel.
- \* Minimum is 48 pieces for caps and visors. 12 per style/color.
- \* \$50 - \$100 Logo Set Up Fee depending on stitch count and complexity of logo.
- \* Logo Charge: \$3-\$9 depending on stitch count
- \* Additional charges may apply for a stitch count greater than 9,000.
- \* Freight & Sales tax not included in price.
- \* PRICES SUBJECT TO CHANGE AT ANY TIME.