

Historic and Architectural Resources  
of the Town of East Hampton

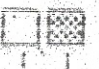

Wainscott Historic District  
Map 2. District Boundary Map

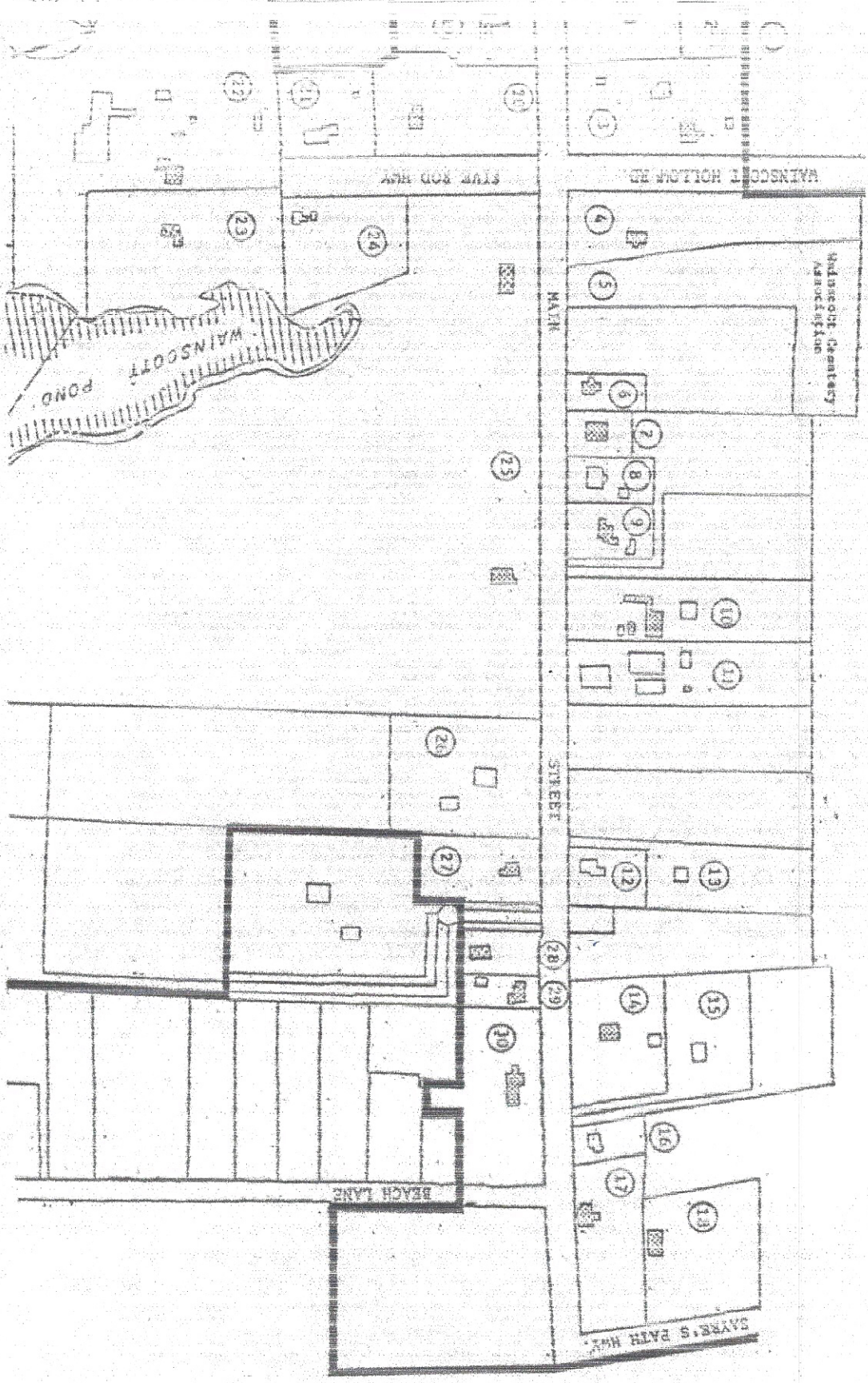
Suffolk County Tax Map with overlay  
of Five Eastern Towns Topographic  
Map

94SD00160 , 13SR00306 MCD 10103 10303



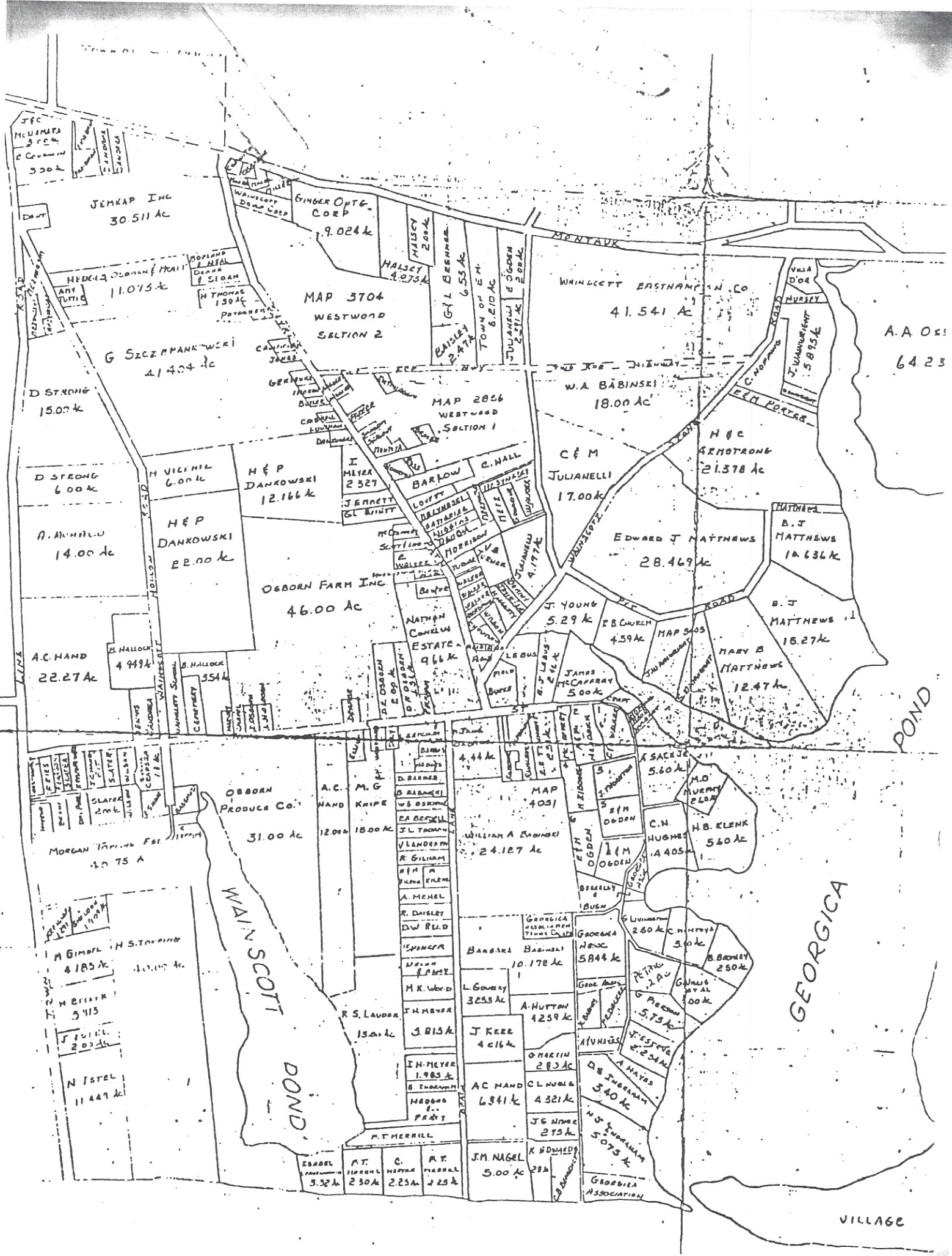


 Contributing  
 Non-contributing



Historic and Architectural Resources  
 of the Town of East Hampton  
 Wainscott Historic District  
 Map 3. Building Key Map  
 (Detail of Map 2)





A.A. 051  
6423

POND

GEORGICA

VILLAGE

MAP 3704  
WESTWOOD  
SECTION 2

MAP 2026  
WESTWOOD  
SECTION 1

MAP 4051

MAP 5003

JEMKAP INC  
30.511 AC

GINGER ONTE.  
CORP  
9.024 AC

WINDETT EASTMAN N. CO.  
41.541 AC

VILLA  
DOR  
MURRAY  
J. LAMBERT  
5.895 AC

HEDELI  
11.075 AC

HALSETY  
4.075 AC

HALSETY  
2.00 AC

GIL BRENER  
6.55 AC

TOWN OF E.H.  
6.210 AC

JULIANE  
2.871 AC

JULIANE  
2.871 AC

JULIANE  
2.871 AC

JULIANE  
2.871 AC

JULIANE  
2.871 AC

JULIANE  
2.871 AC

JULIANE  
2.871 AC

JULIANE  
2.871 AC

JULIANE  
2.871 AC

JULIANE  
2.871 AC

JULIANE  
2.871 AC

JULIANE  
2.871 AC

JULIANE  
2.871 AC

JULIANE  
2.871 AC

JULIANE  
2.871 AC

W.A. BABINSKI  
18.00 AC

C & M  
JULIANELLI  
17.00 AC

H & C  
ARNOTRONG  
21.378 AC

EDWARD J. MATTHEWS  
28.469 AC

B. J. MATTHEWS  
10.636 AC

B. J. MATTHEWS  
18.27 AC

MARY B.  
MATTHEWS  
12.47 AC

H & P  
DANKOWSKI  
12.166 AC

H & P  
DANKOWSKI  
22.00 AC

OSBORN FARM INC  
46.00 AC

I MEYER  
2.327 AC

JENNETT  
2.327 AC

NATHAN  
CONELIN  
ESTATE  
9.66 AC

NATHAN  
CONELIN  
ESTATE  
9.66 AC

NATHAN  
CONELIN  
ESTATE  
9.66 AC

NATHAN  
CONELIN  
ESTATE  
9.66 AC

NATHAN  
CONELIN  
ESTATE  
9.66 AC

NATHAN  
CONELIN  
ESTATE  
9.66 AC

NATHAN  
CONELIN  
ESTATE  
9.66 AC

NATHAN  
CONELIN  
ESTATE  
9.66 AC

NATHAN  
CONELIN  
ESTATE  
9.66 AC

NATHAN  
CONELIN  
ESTATE  
9.66 AC

NATHAN  
CONELIN  
ESTATE  
9.66 AC

NATHAN  
CONELIN  
ESTATE  
9.66 AC

NATHAN  
CONELIN  
ESTATE  
9.66 AC

NATHAN  
CONELIN  
ESTATE  
9.66 AC

J. YOUNG  
5.29 AC

R. B. CUMMINS  
4.59 AC

JAMES  
MCCAFFREY  
5.00 AC

JAMES  
MCCAFFREY  
5.00 AC

JAMES  
MCCAFFREY  
5.00 AC

JAMES  
MCCAFFREY  
5.00 AC

JAMES  
MCCAFFREY  
5.00 AC

JAMES  
MCCAFFREY  
5.00 AC

JAMES  
MCCAFFREY  
5.00 AC

JAMES  
MCCAFFREY  
5.00 AC

JAMES  
MCCAFFREY  
5.00 AC

JAMES  
MCCAFFREY  
5.00 AC

JAMES  
MCCAFFREY  
5.00 AC

JAMES  
MCCAFFREY  
5.00 AC

JAMES  
MCCAFFREY  
5.00 AC

OBORN  
PRODUCE CO.  
31.00 AC

A.C. M.G.  
HAND KNIFE  
12.00 AC

A.C. M.G.  
HAND KNIFE  
12.00 AC

A.C. M.G.  
HAND KNIFE  
12.00 AC

A.C. M.G.  
HAND KNIFE  
12.00 AC

A.C. M.G.  
HAND KNIFE  
12.00 AC

A.C. M.G.  
HAND KNIFE  
12.00 AC

A.C. M.G.  
HAND KNIFE  
12.00 AC

A.C. M.G.  
HAND KNIFE  
12.00 AC

A.C. M.G.  
HAND KNIFE  
12.00 AC

A.C. M.G.  
HAND KNIFE  
12.00 AC

A.C. M.G.  
HAND KNIFE  
12.00 AC

WILLIAM A. ENWING  
24.127 AC

WILLIAM A. ENWING  
24.127 AC

WILLIAM A. ENWING  
24.127 AC

WILLIAM A. ENWING  
24.127 AC

WILLIAM A. ENWING  
24.127 AC

WILLIAM A. ENWING  
24.127 AC

WILLIAM A. ENWING  
24.127 AC

WILLIAM A. ENWING  
24.127 AC

WILLIAM A. ENWING  
24.127 AC

WILLIAM A. ENWING  
24.127 AC

WILLIAM A. ENWING  
24.127 AC

WILLIAM A. ENWING  
24.127 AC

ASAC  
5.60 AC

ASAC  
5.60 AC

ASAC  
5.60 AC

ASAC  
5.60 AC

ASAC  
5.60 AC

ASAC  
5.60 AC

ASAC  
5.60 AC

ASAC  
5.60 AC

ASAC  
5.60 AC

ASAC  
5.60 AC

ASAC  
5.60 AC

ASAC  
5.60 AC

M.O. HURRY  
2.00 AC

M.O. HURRY  
2.00 AC

M.O. HURRY  
2.00 AC

M.O. HURRY  
2.00 AC

M.O. HURRY  
2.00 AC

M.O. HURRY  
2.00 AC

M.O. HURRY  
2.00 AC

M.O. HURRY  
2.00 AC

M.O. HURRY  
2.00 AC

M.O. HURRY  
2.00 AC

M.O. HURRY  
2.00 AC

M.O. HURRY  
2.00 AC

C.N. HUGHES  
1.405 AC

C.N. HUGHES  
1.405 AC

C.N. HUGHES  
1.405 AC

C.N. HUGHES  
1.405 AC

C.N. HUGHES  
1.405 AC

C.N. HUGHES  
1.405 AC

C.N. HUGHES  
1.405 AC

C.N. HUGHES  
1.405 AC

C.N. HUGHES  
1.405 AC

C.N. HUGHES  
1.405 AC

C.N. HUGHES  
1.405 AC

C.N. HUGHES  
1.405 AC

H.B. KLENK  
5.60 AC

H.B. KLENK  
5.60 AC

H.B. KLENK  
5.60 AC

H.B. KLENK  
5.60 AC

H.B. KLENK  
5.60 AC

H.B. KLENK  
5.60 AC

H.B. KLENK  
5.60 AC

H.B. KLENK  
5.60 AC

H.B. KLENK  
5.60 AC

H.B. KLENK  
5.60 AC

H.B. KLENK  
5.60 AC

H.B. KLENK  
5.60 AC

FRIS  
1.00 AC

FRIS  
1.00 AC

FRIS  
1.00 AC

FRIS  
1.00 AC

FRIS  
1.00 AC

FRIS  
1.00 AC

FRIS  
1.00 AC

FRIS  
1.00 AC

FRIS  
1.00 AC

FRIS  
1.00 AC

FRIS  
1.00 AC

FRIS  
1.00 AC

SLATER  
2.00 AC

SLATER  
2.00 AC

SLATER  
2.00 AC

SLATER  
2.00 AC

SLATER  
2.00 AC

SLATER  
2.00 AC

SLATER  
2.00 AC

SLATER  
2.00 AC

SLATER  
2.00 AC

SLATER  
2.00 AC

SLATER  
2.00 AC

SLATER  
2.00 AC

SLATER  
2.00 AC

SLATER  
2.00 AC

SLATER  
2.00 AC

SLATER  
2.00 AC

SLATER  
2.00 AC

SLATER  
2.00 AC

SLATER  
2.00 AC

SLATER  
2.00 AC

SLATER  
2.00 AC

SLATER  
2.00 AC

SLATER  
2.00 AC

SLATER  
2.00 AC

SLATER  
2.00 AC

SLATER  
2.00 AC

SLATER  
2.00 AC

SLATER  
2.00 AC

SLATER  
2.00 AC

SLATER  
2.00 AC

SLATER  
2.00 AC

SLATER  
2.00 AC

SLATER  
2.00 AC

SLATER  
2.00 AC

SLATER  
2.00 AC

SLATER  
2.00 AC

SLATER  
2.00 AC

SLATER  
2.00 AC

SLATER  
2.00 AC

SLATER  
2.00 AC

SLATER  
2.00 AC

SLATER  
2.00 AC

SLATER  
2.00 AC

SLATER  
2.00 AC

SLATER  
2.00 AC

SLATER  
2.00 AC

SLATER  
2.00 AC

SLATER  
2.00 AC

SLATER  
2.00 AC

SLATER  
2.00 AC

SLATER  
2.00 AC

SLATER  
2.00 AC

SLATER  
2.00 AC

SLATER  
2.00 AC

SLATER  
2.00 AC

SLATER  
2.00 AC

SLATER  
2.00 AC

SLATER  
2.00 AC

SLATER  
2.00 AC

SLATER  
2.00 AC

SLATER  
2.00 AC

SLATER  
2.00 AC

SLATER  
2.00 AC

SLATER  
2.00 AC

SLATER  
2.00 AC

SLATER  
2.00 AC

SLATER  
2.00 AC

SLATER  
2.00 AC

SLATER  
2.00 AC

SLATER  
2.00 AC

SLATER  
2.00 AC

SLATER  
2.00 AC

SLATER  
2.00 AC

SLATER  
2.00 AC

SLATER  
2.00 AC

SLATER  
2.00 AC

SLATER  
2.00 AC

SLATER  
2.00 AC

SLATER  
2.00 AC

SLATER  
2.00 AC

SLATER  
2.00 AC

SLATER  
2.00 AC

SLATER  
2.00 AC

SLATER  
2.00 AC

SLATER  
2.00 AC

SLATER  
2.00 AC

SLATER  
2.00 AC

SLATER  
2.00 AC

SLATER  
2.00 AC

SLATER  
2.00 AC

SLATER  
2.00 AC

SLATER  
2.00 AC

SLATER  
2.00 AC

SLATER  
2.00 AC

SLATER  
2.00 AC

SLATER  
2.00 AC

SLATER  
2.00 AC

SLATER  
2.00 AC

SLATER  
2.00 AC

SLATER  
2.00 AC

SLATER  
2.00 AC

SLATER  
2.00 AC

SLATER  
2.00 AC

SLATER  
2.00 AC

SLATER  
2.00 AC

SLATER  
2.00 AC

SLATER  
2.00 AC

SLATER  
2.00 AC

SLATER  
2.00 AC