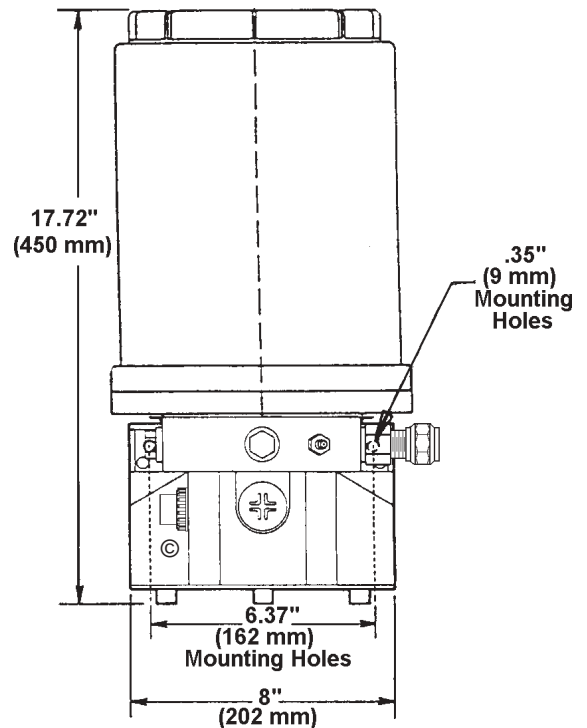
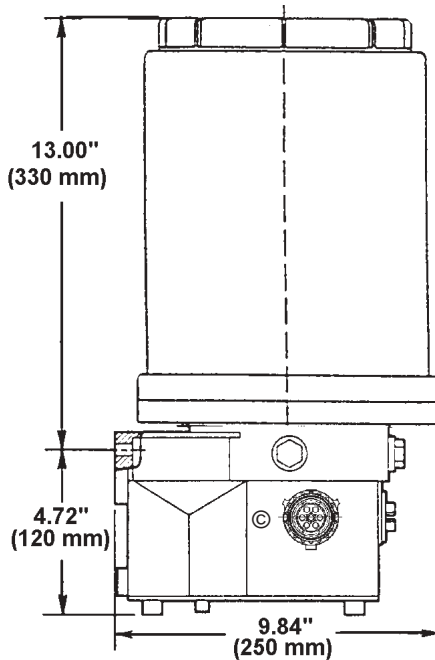


### OWNER/OPERATOR MANUAL



**WARNING**  
Do Not use pump without pressure relief valve.

#### SPECIFICATIONS

##### Electrical Requirements

Model 94812 ..... 12 VDC @ 3.5 amps  
 Model 94824 ..... 24 VDC @ 2 amps  
 Enclosure Rating ..... IP 6K9K - Protected from water sprayed in all directions.

On Time ..... 2 minutes minimum  
 30 minutes maximum  
 in 2 minute increments

Off Time ..... 1 hour minimum  
 15 hours maximum  
 in 1 hour increments

Pump Output ..... 0.171 cu. in./min (2.8 cm/min)

Outlet Connection ..... 1/8" NPT (female)

##### Maximum Recommended

Operating Pressure ..... 3600 psi (248 bar)  
 Reservoir Capacity ..... 488 cu. in. (8000 cc)  
 Lubricant ..... Greases up to NLGI grade 2 (depending on the operating temperature and type of lubricant)

Temperature Range ..... - 13°F(-25°C) to +158°F(+70°C)

Pressure Relief Valve ..... 4000 psi +/- 250 psi (276 bar) +/- (17 bar)

© Indicates change

#### DESCRIPTION

The chassis lube pump is electrically operated and used in a progressive type centralized lubrication system. The pump consists of a pump housing, electric gear motor, a timer and a plastic reservoir with stirring paddle. The high operating pressure allows the pump to supply lubricant up to NLGI #2 grease.

#### MOUNTING THE PUMP

Select an easily accessible place of installation which allows access to the timer and lubricant reservoir filler fitting. The pump must be mounted vertically on an even surface by means of three bolts. (See Fig. 1 on page 3.)

#### TO FILL RESERVOIR

Fill the reservoir through the grease fitting located at the base of the reservoir, using a hand operated grease pump. Refill reservoir when grease reaches "MIN" mark located on the reservoir. Fill the reservoir up to the "MAX" mark located on the reservoir.

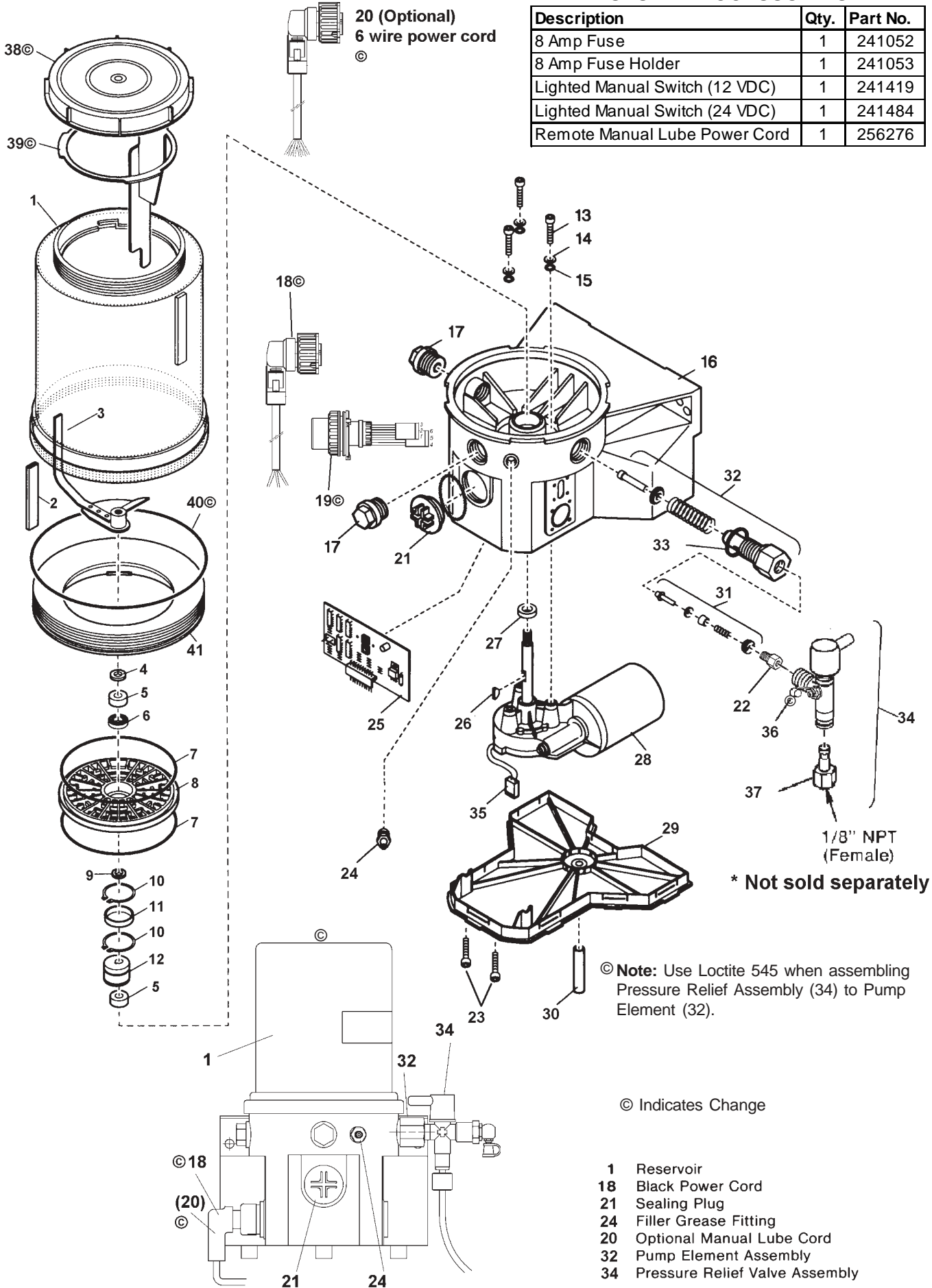
#### TO PRIME SYSTEM

**Pump & Supply Line:** After reservoir has been filled with recommended lubricant, loosen the supply line fitting. Operate the pump until lubricant flows from outlet, then tighten fitting.

**Feed Lines:** Pre-fill each feed line with lubricant before connecting to outlet of divider valve and bearing.

## SYSTEM ACCESSORIES

Description	Qty.	Part No.
8 Amp Fuse	1	241052
8 Amp Fuse Holder	1	241053
Lighted Manual Switch (12 VDC)	1	241419
Lighted Manual Switch (24 VDC)	1	241484
Remote Manual Lube Power Cord	1	256276



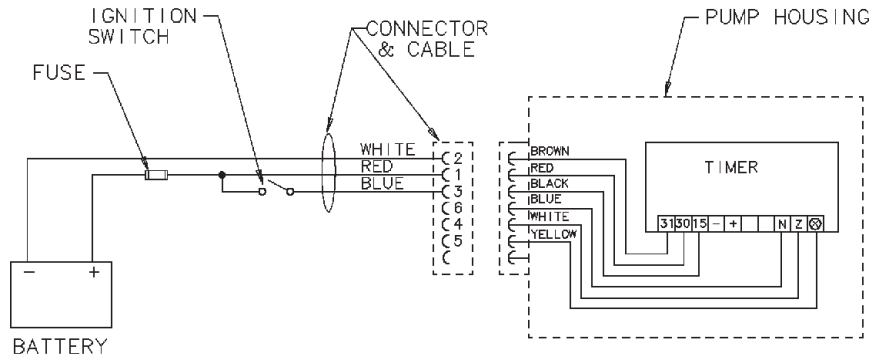
## ELECTRICAL CONNECTIONS

Connect black power cord as follows:

**Red wire** connects to 8 amp fuse then to Battery (+).

**White wire** connects to Battery (-).

**Blue wire** connects to ignition switch, to 8 amp fuse, then to Battery (+).



## PARTS LIST

ITEM NO.	DESCRIPTION	QTY.	PART NUMBER/KIT NUMBER
1	Reservoir	1	part of Kit 246432
2	Hose	1	part of Kit 246433
3	Stirring paddle	1	part of Kit 246433
4	Washer	1	part of Kits 246433 & 246434
5	Bearing ring	2	part of Kit 246434
6	Bearing	1	part of Kit 246434
7	O-ring	2	246424, part of Kit 246432
8	Intermediate plate	1	246425
9	Shim	1	part of Kit 246434
10	Snap ring	2	part of Kit 246434
11	Inner ring	1	part of Kit 246434
12	Eccentric cam	1	246427
13	Screw	3	part of Kits 246435 & 246436
14	Washer	3	part of Kits 246435 & 246436
15	O-ring	3	part of Kits 246435, 246436 & 246437
16	Pump housing	1	246426
17	Closure plug	2	246422
18	3 Wire Power Cord/Plug	1	256274
19	6 Wire Plug	1	256277
20	6 Wire Power/Remote Manual Lube Cord/Plug Optional	1	256276
21	Sealing plug	1	246423
22	Nipple	1	226141055
23	Screw	10	206137967
24	Grease fitting	1	5050
25	Printed circuit board	1	246420
26	Woodruff key	1	part of kits 246435 & 246436
27	Radial seal	1	part of Kits 246435, 246436 & 246437
28	12 VDC motor	1	part of Kit 246435
28	24 VDC motor	1	part of Kit 246436
29	Housing cover	1	246421
30	Hose	1	not sold
31	Check valve	1	part of Kit 600-26876-2
32	Pump element	1	part of Kit 600-26876-2
33	Gasket	1	part of Kit 600-26876-2
34	Pressure relief ass'y.	1	270864
35	Plug for motor	1	part of Kits 246435 & 246436
36	Grease cap	1	242125
37	Adapter for relief ass'y.	1	304-19614-1
38	Lid	1	247671
39	Fixed Paddle	1	247672
40	O-ring	1	247677
41	Adapter	1	247678
42	O-ring	1	219141382

## REMOTE MANUAL LUBE PUSHBUTTON

If a remote manual lube pushbutton is required, order a 256276© Manual Lube Cord/ Plug© (consisting of a 33© ft. cord and plug) and:

for a 12 volt pump, order 241419 - Lighted Manual Lube Switch

for a 24 volt pump, order 241484 - Lighted Manual Lube Switch

## MOUNTING HOLE LOCATIONS

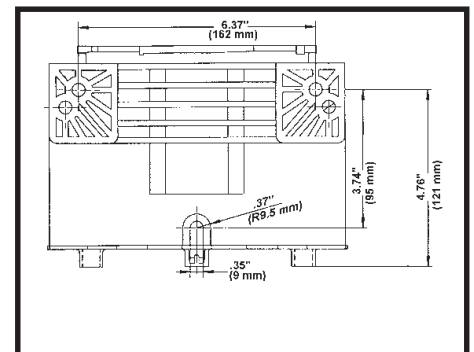


Fig. 1

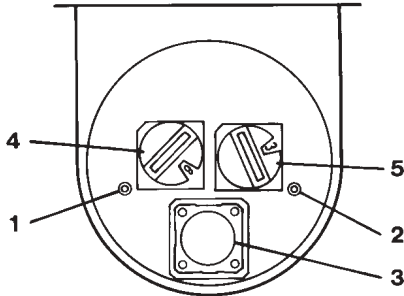
© Indicates Change

## TIMER OPERATION

The Off timer begins accumulating time when the ignition switch closes. When the Off timer reaches the preset value the pump will turn on. The pump remains activated for the period of time that is preset on the On timer.

When the ignition switch opens the Off timer will retain its accumulated time for a period of five days. When the ignition switch closes during the five day period, the Off timer will resume timing from the accumulated time it reached prior to the ignition switch opening. If ignition switch is not closed before the end of five day period, timer will begin with an On period.

Remove Sealing Plug (Item 21) to access manual lube switch, timer adjustments or to view the system LED's.



1. The LED marked "battery" lights when power is applied to the PC board.
2. The LED marked "motor" lights when pumping lubricant.
3. Depressing pushbutton for 2 seconds will initiate a manual lube event.
4. Off time rotary switch. Can be adjusted to 15 values (see chart below).
5. On time rotary switch. Can be adjusted to 15 values (see chart below).

**IMPORTANT: Do Not use the Zero position located on the Off time and On time switches.**

Off-Time Rotary Switch Setting	Interval Between Lube Cycles	On-Time Rotary Switch Setting	Pump will run for:
0	Will not run	0	Will not run
1	1 hour	1	2 minutes
2	2 hours	2	4 minutes
3	3 hours	3	6 minutes
4	4 hours	4	8 minutes
5	5 hours	5	10 minutes
6	6 hours	6	12 minutes
7	7 hours	7	14 minutes
8	8 hours	8	16 minutes
9	9 hours	9	18 minutes
A	10 hours	A	20 minutes
B	11 hours	B	22 minutes
C	12 hours	C	24 minutes
D	13 hours	D	26 minutes
E	14 hours	E	28 minutes
F	15 hours	F	30 minutes

## SERVICE PARTS/KITS

Part no.	Qty.	Description	Item No.
5050	1	Grease Fitting	24
242125	1	Grease Cap	36
246420	1	Printed Circuit Board	25
246421	1	Housing Cover	29
246422	1	Closure Plug	17
246423	1	Sealing Plug	21
246424	1	O-ring	7
246425	1	Intermediate plate	8
246426	1	Pump Housing	16
246427	1	Eccentric Cam	12
© 304-19614-1	1	Adapter for relief assy.	37
© 256274	1	3-wire power cord/plug	18
© 256277	1	6 wire internal plug	19
© 256276	1	6 wire power/remote manual lube cord (optional)	20
246434		Bearing & Seal Kit contains:	
1	Washer		4
2	Bearing Ring		5
1	Bearing		6
1	Shim		9
2	Snap Ring		10
1	Inner Ring		11
246436		12 VDC Motor Kit contains:	
3	Screw		13
3	Washer		14
3	O-ring		15
1	Woodruff Key		26
1	Radial Seal		27
1	12 VDC motor		28
1	Plug for Motor		35
246436		12 VDC Motor Kit contains:	
3	Screw		13
3	Washer		14
3	O-ring		15
1	Woodruff Key		26
1	Radial Seal		27
1	12 VDC Motor		28
1	Plug for Motor		35
246437		Housing Seal Kit contains:	
3	O-Ring		15
1	Radial Seal		27
247671	1	Lid	38
247672	1	Fixed Paddle	39
247674	1	Reservoir	1
247675	1	Stirring Plate	3
247676	1	Hose	2
247677	1	O-ring	40
247678	1	Adapter	41
247679	1	Washer	4
270864	1	Pressure Relief Ass'y	34
219-14138-2	1	O-ring	42
226-14105-5	1	Nipple	22
206-13796-7	10	Screw	23
600-26876-2		Pump Element Assembly contains:	
1	Check Valve		31
1	Pump Element		32
1	Gasket		33

© Indicates Change

### RETAIN THIS INFORMATION FOR FUTURE REFERENCE

When ordering replacement parts, list: Part Number, Description, Model Number and Series Letter.  
LINCOLN provides a Distributor Network that stocks equipment and replacement parts.

## LIMITED WARRANTY-

Lincoln warrants the equipment it supplies to be free from defects in material and workmanship for one (1) year following the date of purchase. If equipment proves to be defective during this warranty period it will be repaired or replaced, at Lincoln's discretion, without charge provided that factory authorized examination indicates the equipment to be defective. To obtain repair or replacement, you must ship the equipment, transportation charges prepaid, with proof of date of purchase to a Lincoln authorized warranty and service center, within one (1) year following the date of purchase.

## LIMITED 5 YEAR WARRANTY (Series 20, 25, 40 Bare Pumps, Heavy Duty and Golden Standard Bare Reels)-

Lincoln warrants series 20, 25, 40 bare pumps, and heavy duty and golden standard bare reels it supplies to be free from defects in material and workmanship for one (1) year following the date of purchase. If equipment proves to be defective during the warranty period it will be repaired, or replaced, at Lincoln's discretion, without charge provided that factory authorized examination indicates the equipment to be defective. To obtain repair or replacement, you must ship the equipment, transportation charges prepaid, with proof of purchase to a Lincoln Authorized Warranty and Service Center within one (1) year following the date of purchase. Additionally, in years two (2) and three (3) the warranty on this equipment is limited to repair with Lincoln paying parts and labor only. In years four (4) and five (5), the warranty on this equipment is limited to repair with Lincoln paying for parts only.

This warranty is extended to the original retail purchaser only. It does not apply to equipment damaged from accident, overload, abuse, misuse, negligence, faulty installation or abrasive or corrosive material, or to equipment repaired or altered by anyone not authorized by Lincoln to repair or alter the equipment. This warranty applies only to equipment installed and operated according to the recommendations of Lincoln or its authorized field personnel. No other express warranty applies.

Any implied warranties applicable to equipment supplied by Lincoln, including the warranties of merchantability and fitness for a particular purpose, will last for only one (1) year from the date of purchase. Some jurisdictions do not allow limitations on how long an implied warranty lasts, so the above limitation may not apply to you.

In no event shall Lincoln be liable for incidental or consequential damages. Lincoln's liability on any claim for loss or damages arising out of the sale, resale or use of equipment it supplies shall in no event exceed the purchase price. Some jurisdictions do not allow the exclusion or limitation of incidental or consequential damages, so the above limitation or exclusion may not apply to you.

This warranty gives you specific legal rights. You may also have other rights that vary by jurisdiction.