



Fisheye HUB

FISHEYE HUB IS A VERY FLEXIBLE LOCATION-BASED
SERVICES PLATFORM WITH INTER-CONNECTED
SOLUTIONS FOR SMART CITIES

SMART CITY
TOOLING

DIVERSE RANGE OF
APPS TO MEET BUSINESS NEEDS

**ASSURED CUSTOMER
IDENTITY PREVENTS
DUPLICATE
RECORDS**

**AUTOMATE
JUST IN TIME
OPERATIONS
THROUGH TRACKING**

**DIRECTIONS AND DIRECT
MESSAGING TO
DESTINATION**



**DIRECT USER
ENGAGEMENT DRIVEN BY A
PRIVACY MANAGED
SOLUTION**

**Integrates with 3rd party Apps
for ID authentication**

- **Convenience for the tracking
travellers with targetted
messaging**

- **Medical facilities can be fitted
with asset tracking**

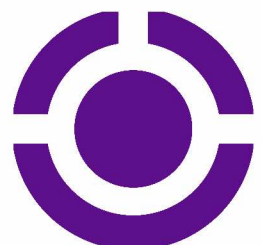
- **Integrate with FE Hub IoT
devices for find-me services
for vulnerable visitors getting
lost, or pairing medical staff
with operational needs at
hospitals**

LOCATION BASED SERVICES

Fisheye Hub provides a centralised platform for a range of customisable services. Every tracking session is recorded on the platform, and all identifiable information for the user is deleted after a session is completed.

Obfuscated information is shared with service providers. Core datasets can be diverted to State-owned servers. Various reports generated from core data or obfuscated data, using AI services, for footfall patterns, movement of assets, time taken for a response, physical presence, duration onsite and many other scenarios. Fisheye Hub can also provide Augmented reality assets to gamify the visitor presence with geo-digital vouchers and gifts.

Solutions driven
by users for their
requirements
and not for their
data-exploitation



A DIVERSE ECOSYSTEM OF INTEGRATION POINTS

On Fisheye Hub

CENTRALISED
AND ENCRYPTED BY USER



Fisheye
Encryption



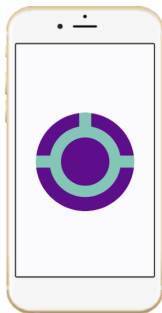
Device
certificate



Session
based
tokens



Fisheye
Analytics



App and Web-based
access



Passwords, NFC
Keys and Biometrics



Social
Media login



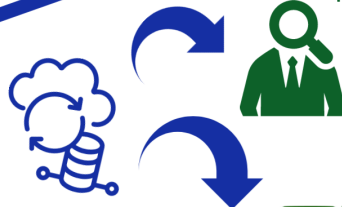
IoT
devices

State-Approved
Assurance
(optional)

OPTIONS FOR AN API BASED
INTEGRATION FOR A
CENTRALISED ASSURANCE FROM VERIFIED
GOVERNMENT-APPROVED SYSTEMS



External
ID



Channel
Partners

OPTIONS TO
CENTRALISED
OPERATIONAL DATA



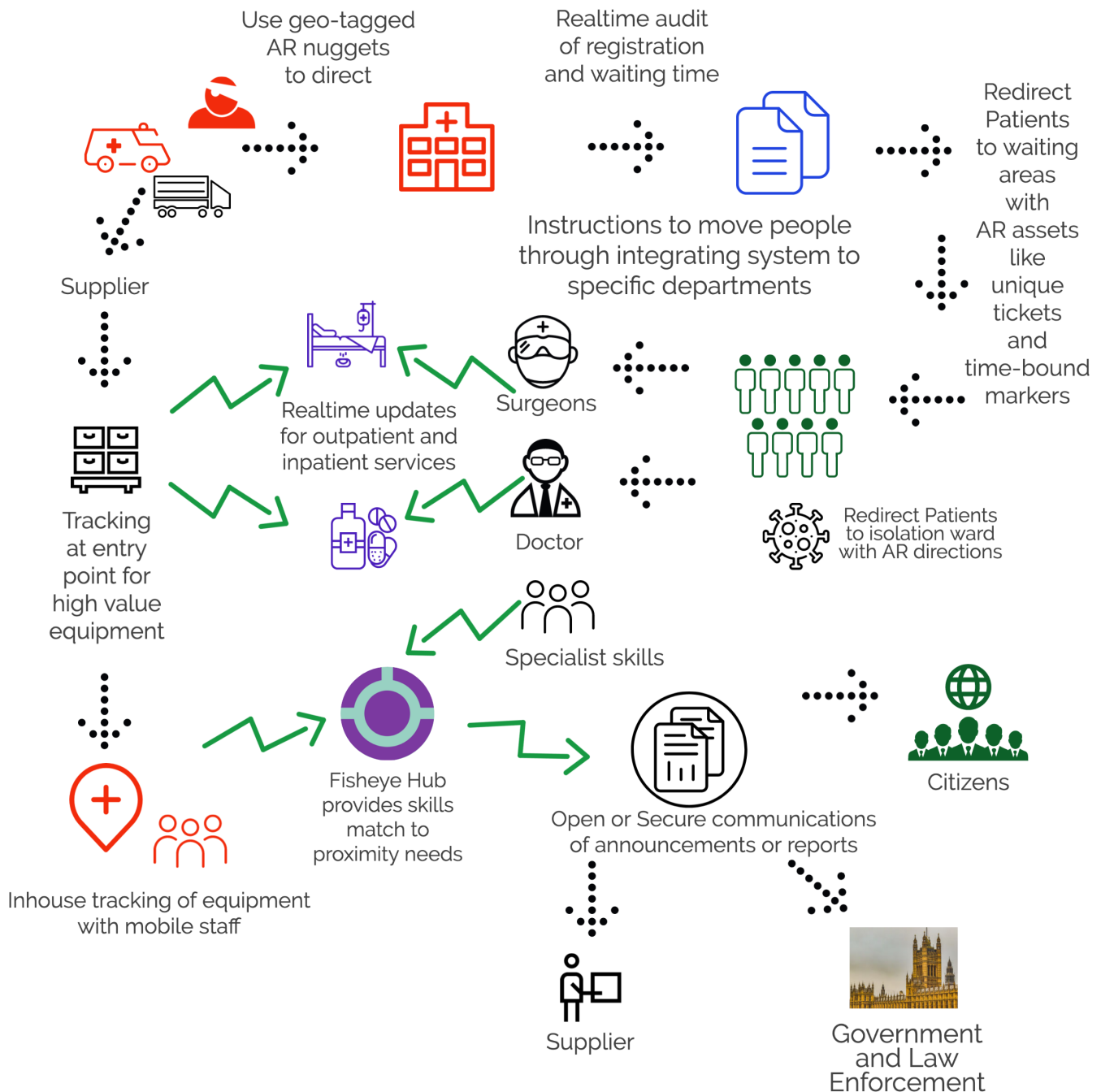
Data flow
Pass-through

DECENTRALISED
AND USER MANAGED

User-led
and
Owned



DIGITISE SERVICES USING ETHICAL TRACKING FOR HOSPITAL SERVICE PROVISIONS

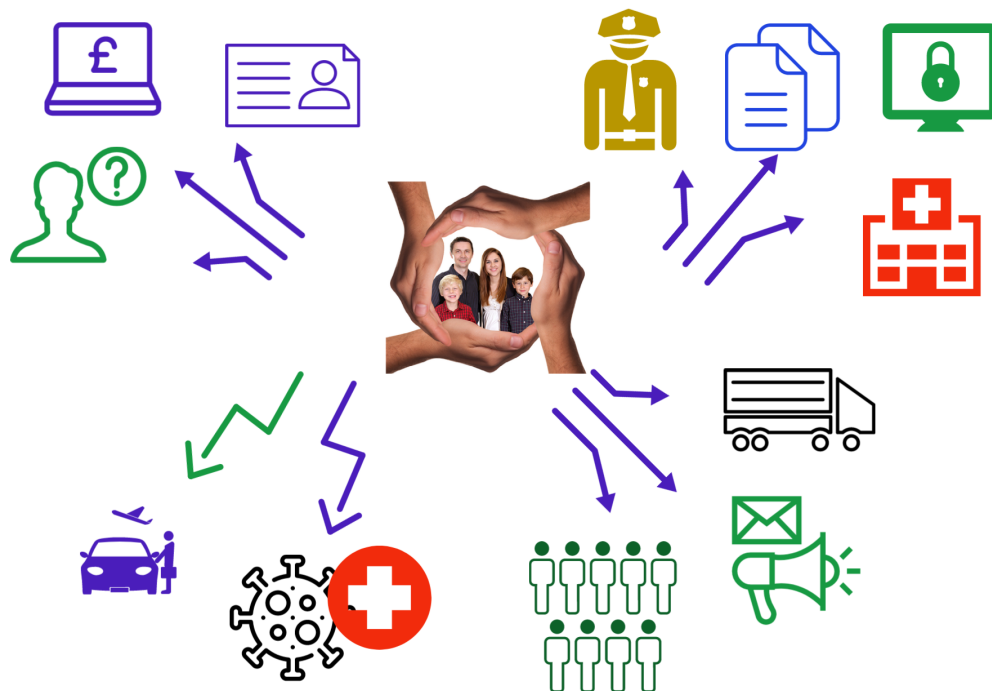


Revolutionise the engagement
between business and end-users



FLEXIBLE ARCHITECTURE TO DIGITISE AUGMENTED
TECHNOLOGY-LED SERVICES

ENCOURAGE INNOVATORS AND SERVICE PROVIDERS TO CREATE A KNOWLEDGE-INTENSIVE
POWERHOUSE LED BY A CLEAR FOCUS ON STATE CONTROLS



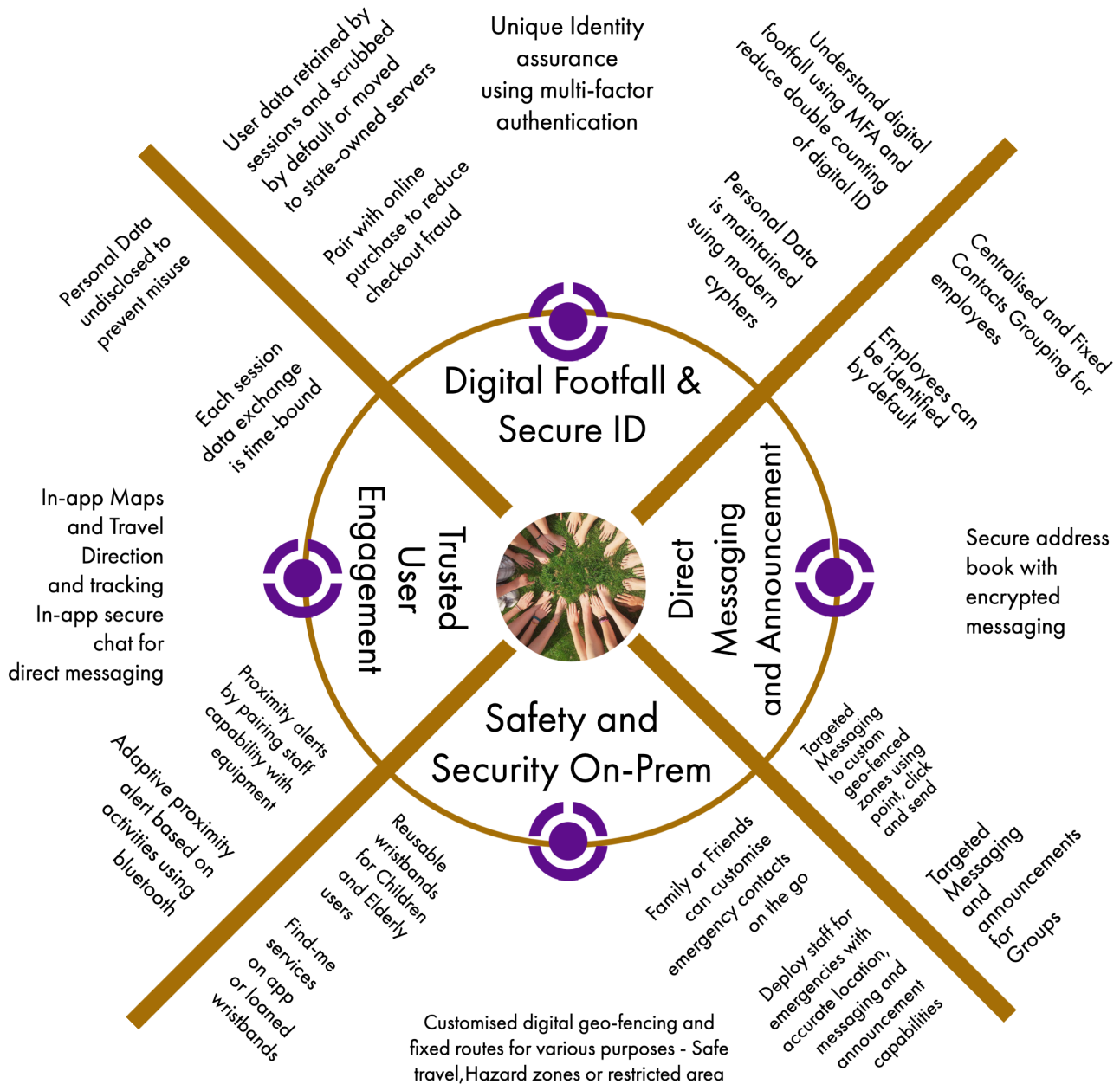
State-led Digital Governance and Technology led businesses are known for their rapid growth. Fisheye Hub's scalable architecture and multilingual capabilities complement this fast growth. Data and knowledge are retained locally using modern state-owned cyphers. A modern and secure ecosystem encourages creativity and innovation, a key enabler for technological growth. The Fisheye Hub platform is elastic and serverless. All digital services are offered using micro-services architecture. This allows the hub to be augmented through minimal changes to the existing solution and add new functions on-the-go in the future for continuous improvement and growth.

Revolutionise the electronic supply chain with
State-controlled data centres with State-owner cypher



Centralise the full lifecycle of the user's digital footprint through ethical and secure tracking

Why Fisheye Hub for digital services?



Mobile app for personal use

Fully encrypted- To user, By user- data theft risk reduction

Benefit to user



Nothing saved by default for data exploitation

Find-me service for personal use



REAL-LIFE APPLICATIONS OF A SECURE LOCATION-BASED SERVICE PLATFORM

HOSPITAL EMERGENCIES

Hospitals can tag specialist health equipment (e.g. resuscitator, ECG machines, Emergency kits. etc). Rules and alerts for each defined zone within the hospital can be created, such that staff are immediately alerted to the designated location of an asset, or to locate it if it has moved from the designated zone, or audit its last known location and even the last user.

ASSET TRACKING

Sticker trackers can be affixed on assets to monitor tracking across a building, using a mesh of easy to deploy off the shelf sensors. Each of these will be monitored through Fisheye Hub. Each can be assigned by the business to staff on their mobile app for emergency mobilisation such as ambulance service or for service management. As time progresses, future devices can be specified with built-in trackers where possible. This prevents the need for additional logs, and automated audit trails.

MANAGING CRITICAL ASSETS

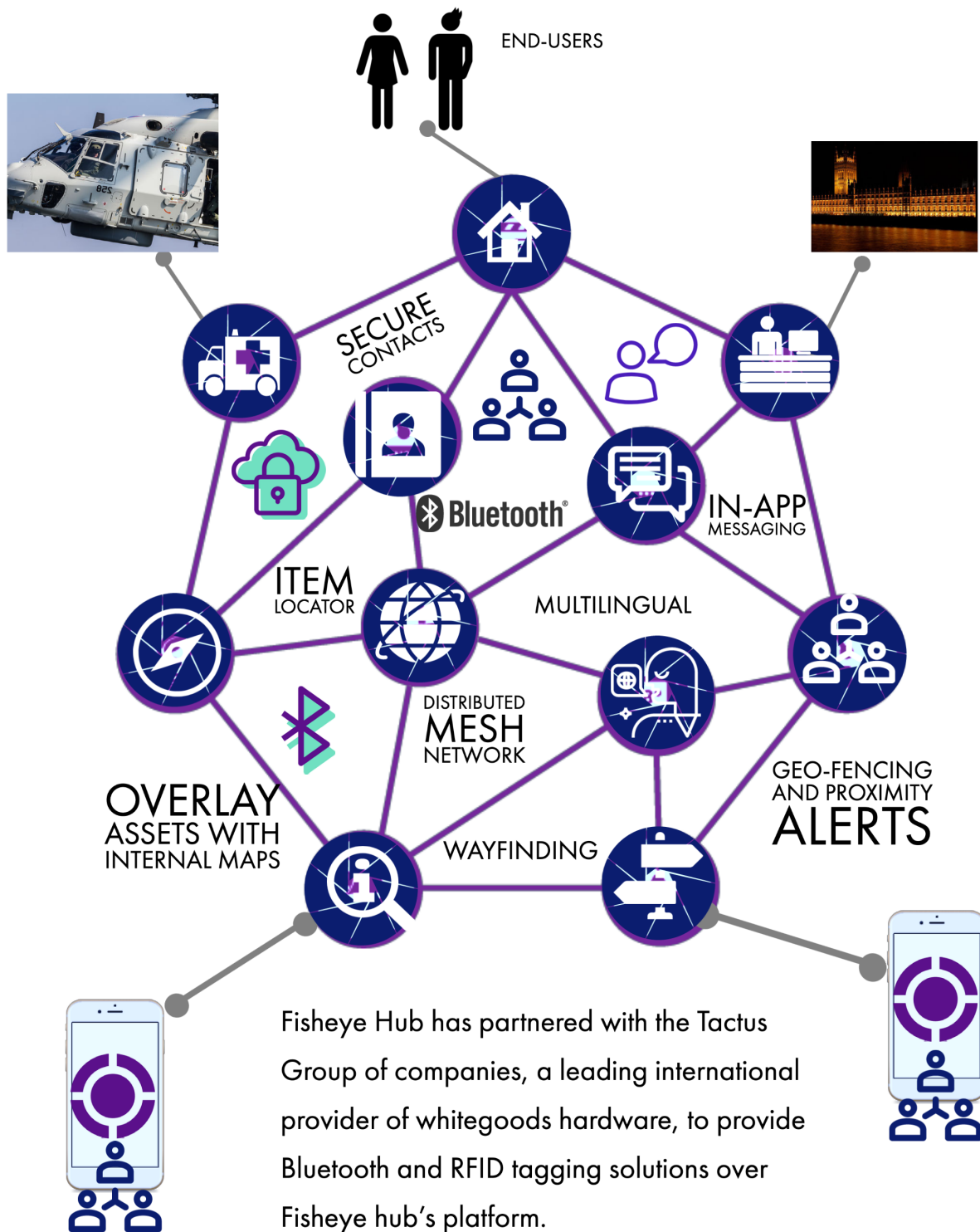
Tagged specialist equipment can be paired with staff skills. Specialist skills of staff can be attributed to users (e.g. resuscitation, cardiograph technician, on-watch ward-doctors). These two can be paired on the Hub with rules and alerts defined by zones within the hospital. In an event of an incident, say for e.g. a patient requiring resuscitation, the nearest operator(s) can be sent out instant automated alerts with accurate location of the incident. Another example would be to create a min number of staff skills for a zone. So if one anaesthetist was designated for 3 zones, the moment (s)he left the zone, the duty officer and the on-watch anaesthetist would be alerted.

CROWD MANAGEMENT AND PAIRED VIDEO INDEXING

Where these apps are provided to citizens, Fisheye Hub provides heat maps of crowd density. By using the point, create, click and send feature for on-the-go geo-fenced zones, event organisers or even law enforcement teams can send targetted messaging to location defined users. If video indexing is paired with the Fisheye Hub platform, time-stamps and location information can be used to identify specific individual or even assets.

Fisheye HUB

FLEXIBILITY AND SECURITY BY DESIGN FOR AN IOT
INTERCONNECTED INFRASTRUCTURE





Let's design the future of living.
Call us or email us:
Rajeev Chakraborty
MD, AAL London
Founder, Fisheye Hub
rc@aryaaltd.com
+44 78 3796 2249

