



**EMBAILS SAFE**  
GPS MONITORING

**VIC Office**

Level 40, 140 William St, Melbourne Vic 3000  
**Phone:** (03) 9002 4670

**NSW Office**

Level 14, 153 Macquarie Street Parramatta  
**Phone:** (02) 9190 8493

**[www.embail.au](http://www.embail.au)**

BAILS SAFE HEALTH GROUP PTY LTD | **ABN:** 89 661 733 348

BailSafe Australia's electronic monitoring system rigorously adheres to the comprehensive minimum standards as delineated in Schedule 1 of the Bail Regulation 2021 (NSW), ensuring unparalleled precision and reliability in monitoring services:

Schedule 1 of the Bail Regulation 2021 outlines the minimum standards required for electronic monitoring devices and systems. These standards ensure the devices and systems are efficient, secure, and adaptable to various conditions and requirements. The key requirements are summarized as follows:

### **Part 1: Minimum Standards for Electronic Monitoring Devices**

- Devices must include: An ankle strap, necessary components, a dedicated charger, and an instruction manual.
- GPS capabilities: Must record and report its position, and generate alerts 24/7.
- Casing: Requires an IP68 rating for water submersion up to 5 meters for 60 minutes, robust, UV resistant, and resistant to unauthorized tampering.
- Operational requirements: Designed for Australian environmental conditions, no indication to the wearer if the device goes offline, and must store geofences, including exclusion zones.
- Strap and components: Removal only with a proprietary tool not available to the public, can be disposable or reusable, must have a 6-month minimum lifespan, made from hypoallergenic materials, and replaced as necessary.

### **Part 2: Minimum Standards for Stationary Beacon or Home Unit**

- Construction: Must be robust and tamper-resistant.
- Technology: Uses the latest radio frequency technology for maximum detection range, communicates via radio frequency, and automatically tethers to the wearer when in range. Designed to prevent signal interception.

### **Part 3: Minimum Standards for Battery and Charging**

- Battery: Sealed, tamper-resistant pack. The system must report on battery status, alert for low battery, and support data transmission while charging.

### **Part 4: Minimum Standards for Monitoring and Notifications**

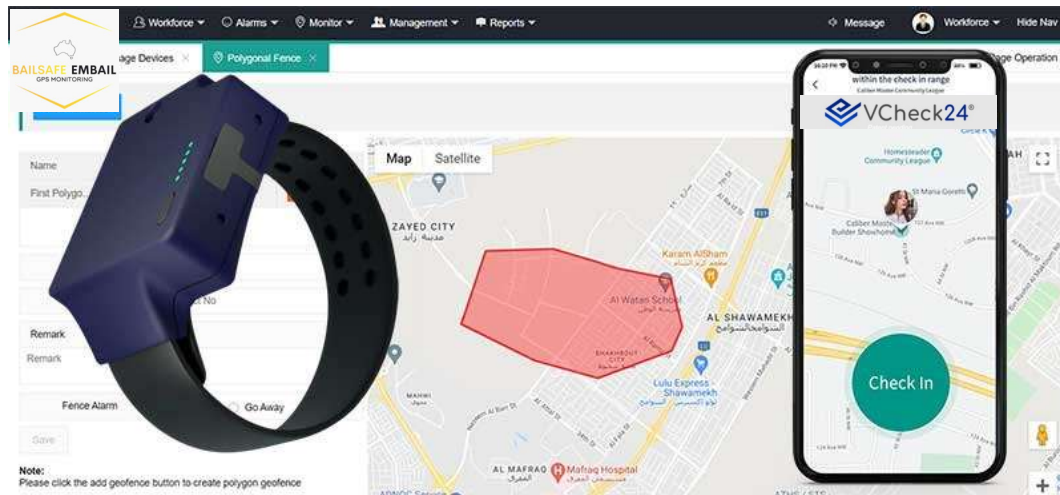
- System requirements: Continuous monitoring with Australia-wide GPS and mobile network operation. Uses online maps, updated regularly, covering beyond New South Wales.
- Capabilities: Reporting on wearer's location in near real-time, ensuring accuracy of map details, determining addresses, managing inclusion and

# Contents

1. EMBAIL GPS Monitoring
2. Alerts and GPS data
3. Geofence Boundaries
4. 24-Hour Control Room
5. BailSafe Smartphone Application
6. GPS Location Monitoring Indoor Room Positioning

## Appendix 1

### TR40 Device Description



# 1. EMBAIL GPS MONITORING

## Integrated Patient Monitoring

The EM BAIL program utilizes two concurrent electronic tracking systems and multiple tracing methods to monitor court-involved patients' compliance with bail conditions.

The EM Bail system monitors the patient via;

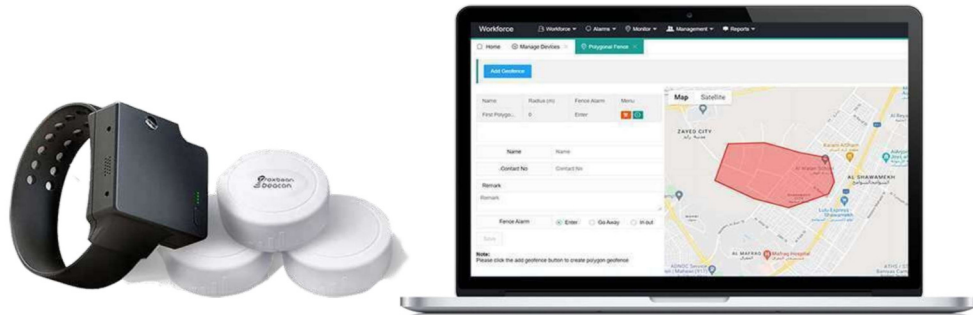
- a. Wearable GPS Ankle Unit
- b. VHCECK24 Smartphone Application

The combination of both smartphone applications and wearable GPS tracking devices are designed to provide comprehensive support throughout the bail period with functionalities such as video check-ins, continuous GPS tracking, real-time alerts, and reporting.

### a. Wearable GPS Tracking Device

**Tamper-Resistant:** The participant wears a tamper-proof GPS tracking device that will alert if removed.

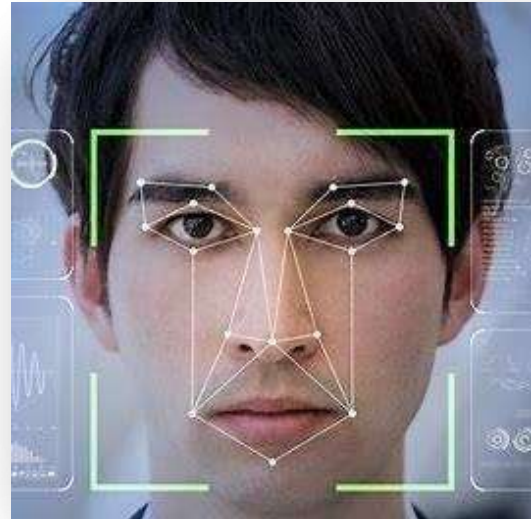
**Real-Time GPS Tracking:** The device records location date, and timestamp. The device enables real-time tracking of the participant's movements and visited locations, providing continuous monitoring and supervision



## b. Vcheck24 Phone Application for Bail Participants

EM Bail Smartphone applications is a virtual supervision technology specifically designed for court-involved patients. This smartphone application offers the following key features:

- **Video Check-ins:** Patients are prompted to provide their name, location, and read two random words displayed on the screen. Video check-ins serve as verification for curfew, attendance at police stations, and employment attendance.
- **Continuous GPS Tracking:** The application provides real-time GPS tracking, allowing monitoring of the patient's movements and visited locations. Stop locations are recorded for comprehensive tracking and historical analysis.
- **Daily Patient Report:** Automatic daily reports are generated, detailing patient location points, video check-ins, and zone events. These reports are sent to the nominated police informant for regular monitoring.
- **Two-Way In-App Messaging:** Patients can directly communicate with relevant stakeholders through the application's messaging feature, facilitating secure and efficient communication.
- **Alerts:** Alerts are sent to one or multiple persons via email and/or text message, enabling prompt response to any violations or non-compliance.
- **No GPS Alert:** The system provides alerts if a patient attempts to tamper with the application by deleting it, deactivating location services, or turning off their phone.
- **Access:** Informants or nominated parties are granted unique user logins, providing them with direct and real-time access to GPS tracking data, scheduled alerts, and alarms specific to the nominated bail participant.



### Advanced Facial Recognition

A key feature of VCheck24 is its advanced facial recognition technology. This feature is meticulously engineered to identify the individual undertaking the VCheck24. It works by comparing the live image of the user with a pre-registered image in the system's database. This comparison ensures that the person performing the VCheck24 is indeed the registered client, thereby preventing impersonation or fraudulent check-ins.

### Liveness Detection

In addition to facial recognition, VCheck24 incorporates a state-of-the-art liveness detection feature. This aspect is crucial in distinguishing a live human face from photographs, videos, or three-dimensional models. The liveness detection ensures that the system is interacting with a real person in real-time, effectively negating attempts at spoofing or deception.

## 2. Improved access to alerts and GPS data

When the tracing application is utilized in both VCheck24 and BailSafe Embail systems, the tracking data and alerts are accessed and able to be sent to the key stakeholders:

**Informant:** They can actively monitor the participant's GPS tracking data, scheduled alerts, and alarms in real-time. This direct access allows them to stay updated on the participant's movements and ensure adherence to bail conditions.

**Person Providing Surety:** The person providing surety, who plays a crucial role in supervising the participant's compliance with bail conditions, also receives access to the tracing application. This access allows them to actively monitor the participant's GPS tracking data, receive alerts and notifications, and ensure the individual is meeting their obligations.

**Population**

FullName	Passport	Start Time	Discharge Time	IMEI	Address	Menu
		2023-09-19	2023-12-28	35593200010677	13Mikewin Drive Cranbourne East	Profile Monitor
		2023-09-22	2020-09-09	35593200010446	70 Coesna Drive Kewlett Vic 3006	Profile Monitor
		2023-07-29	2024-07-11	35593200013143	5 Newham Drive ROMSEY VIC 3434	Profile Monitor
		2023-06-21	2024-06-17	35593200012444	13 Gillespie Rd St Albans	Profile Monitor

Name	IMEI	Last Updated
	35593200011850	Inactivated Date
	35593200013277	Inactivated Date
	35593200011854	Inactivated Date
	35593200013783	Inactivated Date
	35593200011843	Inactivated Date
	35593200011835	28-07-18 13:25
	35593200012715	Inactivated Date
	35593200011827	Inactivated Date
	35593200012816	Inactivated Date
	35593200011801	Inactivated Date
	35593200012220	Inactivated Date
	35593200012848	Inactivated Date
	35593200012428	Inactivated Date
	35593200011818	Inactivated Date
	35593200012148	Inactivated Date

### 3. Geofence Boundaries

A geofence is a virtual boundary that provides capacity to monitor specific locations by setting customized boundaries around geographic locations.

Geofencing monitors clients stay within or out of specific locations. If they breach the boundaries, immediate notifications are triggered, enabling intervention, and promoting adherence to bail conditions.

- **Curfew:** Geofencing helps enforce curfew requirements and restrict access to locations of risk.
- **Reporting:** Geofencing provides precise location data for reporting purposes.
- **Customized:** Geofencing allows for tailored supervision based on individual needs and court requirements.



### 4. 24-Hour Monitoring Room

**24-Hour Monitoring:** The program provides round-the-clock monitoring services to ensure constant supervision of individuals on bail, enabling timely responses to violations or emergencies while maintaining a high standard of Bail Supervision.

**Grade 1 Accredited Security Control Room:** The security control room holds top-grade accreditation, signifying exceptional security and monitoring capabilities.

## 5. BailSafe Smartphone Application

The BailSafe smartphone application, available on iOS and Android devices, allows family members to access real-time GPS tracking data and reports specific to their loved one.

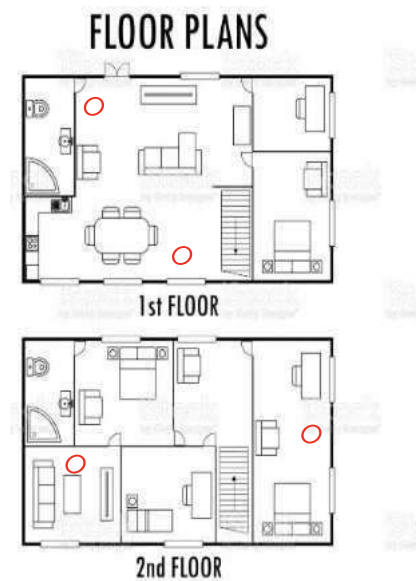
This App allows families to monitor location 24/7 and receive alerts if their loved one is outside the bounds of their bail conditions. It will provide SMS, email, and push notifications through the phone app every time the bail participant leaves and enters the bail address. It will also alert if the GPS system is not tracking or if any attempt is made to tamper with it.



## 6. GPS Location Monitoring Indoor Room Positioning

GPS Location Monitoring Indoor Room Positioning enables tracking and monitoring of individuals within the home, specifically within rooms. Unlike traditional GPS systems that rely on satellite signals for outdoor positioning, indoor room positioning utilizes Bluetooth and Wi-Fi with specialized beacons to establish location information.

The beacons emit signals that are detected by the GPS devices. The system can determine the location of the device within the indoor space.





## Appendix 1

### GPS ANKLE MONITOR

#### TR40 Device Description

The TR40 is a tracking device equipped with the SL8521E chip, running at 1.3GHZ. It utilizes a dual-core ARM Cortex A53 processor. An LED indicator is present on the device.



For network connectivity, the TR40 supports multiple frequency bands across FDD, TDD, WCDMA, and GSM. It uses a Nano Sim card and operates on the Android 4.4 system. The device has a memory configuration of 512M+4GB and includes GPS functionality. The GPS system is complemented by a high-sensitive LDS antenna.

The device's primary power source is a 4000mAh battery. An optional 5000mAh portable charger is available. The TR40 is designed to be water-resistant, with ratings of IP67/IP68. It offers Wi-Fi and Bluetooth 4.2 connectivity options. (IP68 all NSW participants)

#### TR40 Standard Issue Accessories



The TR40 provides real-time tracking using various methods, including GPS, WiFi, LBS, BDS, and AGPS. It has a tamper-proof alert system, geofence alert capabilities, and a low battery alert. The device also supports one-touch SOS alerts and two-way communication.

#### Specification of TR40

- Main Chip: SL8521E (1.3GHZ)
- Processor: Dual-core ARM Cortex A53
- LED: Yes
- Frequency Band:
- Sim Card: Nano Sim Operating System: Android 4.4 Memory: 512M+4GB
- GPS: Yes
- Tracker Battery: 4000mAh (3.7V) Portable Charger (optional): 5000mAh GPS Signal: L1, 1575.42MHz C/A code Charger: Magnetic charger
- GPS Antenna: High sensitive LDS
- Wristband: ABS+TPU
- GPS Chip Receive Sensitivity: Waterproof: IP67/IP68 All NSW Participants IP68
- WIFI Connection: Yes
- Bluetooth: 4.2
- Size: 81.927022.88cm



### Integrated Patient Care and Monitoring

✉ info@bailsafeaustralia.com.au

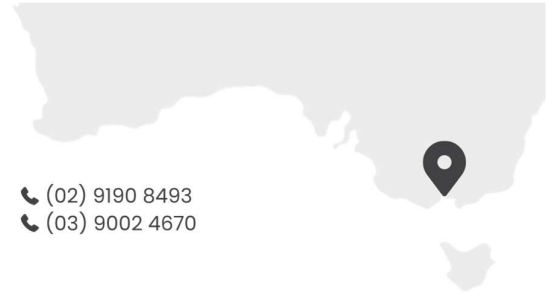
**NSW** Level 14, 154 Macquarie Street, Parramatta

**VIC** Level 40, 140 Williams St, Melbourne VIC 3000

[www.bailsafeaustralia.com.au](http://www.bailsafeaustralia.com.au)

☎ (02) 9190 8493

☎ (03) 9002 4670



Your Honour

**Re: Mr**

**Electronic Monitoring Bail**

This letter serves as an introduction to accompany the detailed information package we have prepared for your consideration in the application of Mr.

**Address:**

#### **Program Overview:**

The EMBAIL program offers a comprehensive set of features designed to ensure effective electronic monitoring, compliance with bail conditions, and enhanced security. The key components of our program include:

1. **Dual GPS Tracking:**
2. We employ a combination of wearable units and GPS-enabled smartphones for continuous and accurate location monitoring.
3. **Scheduled Video Check-Ins:** Regular video check-ins are scheduled to verify the client's presence and enhance security.
4. **24-Hour Monitoring:** Our Grade 1 Accredited Security Control Room provides constant supervision, ensuring a timely response to any violations or emergencies.
5. **High-Quality GPS Unit:** Our tamper-resistant GPS devices offer real-time monitoring with immediate tamper alerts for added security.
6. **Wearable Units:** Ankle and wrist-worn GPS units are provided for convenience and comfort, ensuring compliance without disrupting daily life.
7. **Vcheck24 Phone Application:** Our dedicated smartphone application facilitates video check-ins, continuous tracking, and effective communication.
8. **Geofence Boundaries:** Geofencing technology is employed to enforce curfew compliance and provide immediate breach notifications.



### Integrated Patient Care and Monitoring

✉ info@bailsafeaustralia.com.au

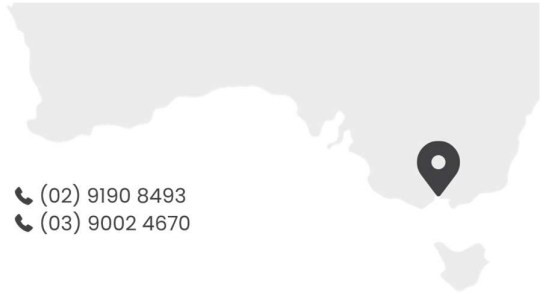
**NSW** Level 14, 154 Macquarie Street, Parramatta

**VIC** Level 40, 140 Williams St, Melbourne VIC 3000

[www.bailsafeaustralia.com.au](http://www.bailsafeaustralia.com.au)

☎ (02) 9190 8493

☎ (03) 9002 4670



9. **Indoor Location Monitoring:** We utilize Bluetooth, Wi-Fi, and beacons to determine indoor locations accurately.
10. **Commitment to Compliance and Security:** Our Standard Operating Procedures (SOP) for control room operators ensure systematic and efficient responses to alarms or issues, upholding the integrity and effectiveness of the monitoring process.

### Electronic Monitoring Devices:

Our electronic monitoring devices are designed to meet the highest standards:

1. Ankle or wrist monitors with GPS capability for position recording and 24-hour alert generation.
2. IP68 rated casing for water resistance.
3. Robust, UV-resistant materials like Kevlar or industrial-grade plastic, suitable for all Australian atmospheric and environmental conditions.
4. No online indication to the wearer.
5. Storage of geofences and exclusion zones.
6. Removable only with a proprietary tool.
7. 24-hour accredited Grade One control room monitoring.
8. Includes a portable charger and instruction manual.
9. Stationary Beacons or Home Units:
10. Utilizes Bluetooth and Wi-Fi for in-home, room-level positioning.
11. Automatically tethers when in range.
12. Designed to be readily interceptable or trackable if necessary.
13. Battery and Charging:
14. Sealed, tamper-resistant battery pack.

### Monitoring:

Our 24-hour control room operates with a standard procedure for all alerts.

1. Alerts are followed up with calls at five-minute intervals.
2. Alerts must be resolved or clarified within 15 minutes.
3. Contact is made with a designated informant during business hours and a local 24-hour police station outside of these hours.
4. Video verification is required for specific alarm classifications, such as tampering and geofence violations.



**Integrated Patient Care and Monitoring**

✉ info@bailsafeaustralia.com.au

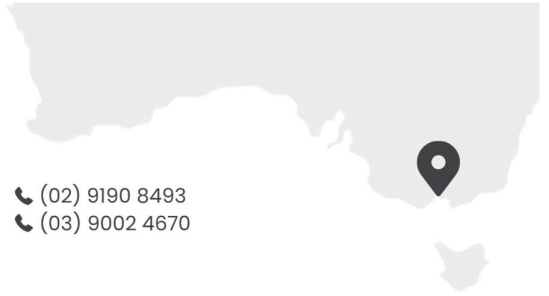
**NSW** Level 14, 154 Macquarie Street, Parramatta

**VIC** Level 40, 140 Williams St, Melbourne VIC 3000

[www.bailsafeaustralia.com.au](http://www.bailsafeaustralia.com.au)

☎ (02) 9190 8493

☎ (03) 9002 4670



5. Facial Recognition: To confirm the identity of the user during check-ins.
6. Liveness Detection: Ensuring real-time interaction with the actual person.
7. Regular Scheduled Check-Ins: For ongoing verification of the client's location and status.

We at BailSafe Australia are committed to supporting Mr. \_\_\_\_\_ compliance with bail conditions through these advanced technologies in strict adherence to the bail conditions set by the Court.

Yours Sincerely,

*Jackson Oppy*

Director

BailSafe Australia



### Integrated Patient Care and Monitoring

✉ info@bailsafeaustralia.com.au

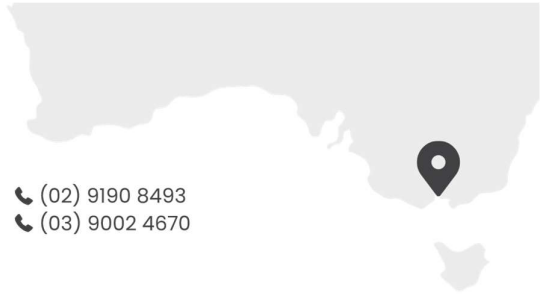
**NSW** Level 14, 154 Macquarie Street, Parramatta

**VIC** Level 40, 140 Williams St, Melbourne VIC 3000

[www.bailsafeaustralia.com.au](http://www.bailsafeaustralia.com.au)

☎ (02) 9190 8493

☎ (03) 9002 4670



## Consent to EM Bail Program

### Participant Details

Full Name\*

IMEI#\*

Date Of Birth\*

SIM CARD #\*

Client Email

Address\*

Mobile phone\*

State

### Consent to GPS Location Tracking

As part of your bail conditions, you are required to participate in a GPS location tracking program using your smartphone and the TR40 device. This involves the continuous tracking of your movements, 24 hours a day, 7 days a week, via the VCheck24 mobile application on your smartphone and direct tracking through the TR40 wearable device, leveraging advanced GPS capabilities.

By signing this document, you acknowledge and voluntarily agree to this GPS tracking, as outlined under the Surveillance Devices Act 1999 (VIC). Withdrawal of consent must be promptly communicated to the designated police contact specified in your bail conditions.

### Information Sharing

The GPS tracking data from both your smartphone and the TR40 device is managed in real-time by our data monitoring center and may be shared with:

- Police officers and the designated informant
- The Courts
- Your legal representative
- 

### Responsibilities and Alerts

Failure to keep your smartphone and TR40 device charged or any attempts to interfere with the GPS tracking will trigger an alert. You are responsible for maintaining your smartphone's charge, ensuring the integrity of the VCheck24 app, and the TR40 device. Non-compliance with curfew hours or entry into restricted zones will also result in alerts.

### App Installation and Operation

You must ensure that your smartphone is consistently charged and has the VCheck24 app installed and operational, and that the TR40 device is worn as directed. Instructions for downloading and



### Integrated Patient Care and Monitoring

✉ info@bailsafeaustralia.com.au

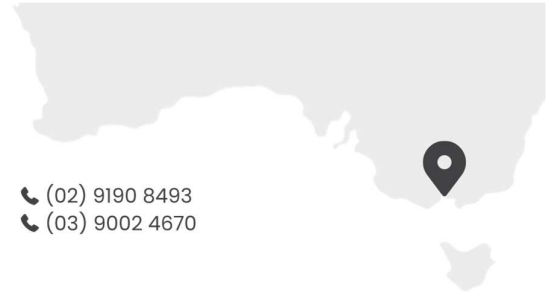
**NSW** Level 14, 154 Macquarie Street, Parramatta

☎ (02) 9190 8493

**VIC** Level 40, 140 Williams St, Melbourne VIC 3000

☎ (03) 9002 4670

[www.bailsafeaustralia.com.au](http://www.bailsafeaustralia.com.au)



using the app and guidelines for the TR40 device will be provided. The app's liveness detection and facial recognition features, along with the TR40's tamper-proof design, ensure compliance and security.

### Smartphone and TR40 Requirements

The smartphone must be GPS-enabled and compatible with the VCheck24 app. The TR40 device must be worn as instructed. Both the device and the app must be maintained in good working condition.

### Consent Acknowledgment

- 1. I understand the GPS data collection and storage.
- 2. I agree to keep the VCheck24 app operational and not to tamper with the app or device.
- 3. I commit to maintaining the smartphone's charge and ensuring it is charged daily.
- 4. I acknowledge alerts will be raised for tampering or low charge and communicated to the informant and police.
- 5. I understand my location tracking data may be requested by legal representatives.
- 6. I agree to periodic maintenance checks for the app and to respond promptly to such requests.
- 7. I understand I am responsible for the smartphone and any associated costs.

### GPS Maintenance and Support Contact

VIC: Fixaphone, Shop: G-056, Keilor Central Shopping Centre, Phone: 0432 792 663

NSW: Sydney, Level 14, 153 Macquarie Street Parramatta, Phone: (02) 9190 8493, Email:

[info@bailsafeaustralia.com.au](mailto:info@bailsafeaustralia.com.au)

### Documentation Provided

a) Passport photo

b) Photo identification

c) Bail Order

### Participant's Declaration

Signature:

Name:

Date:



**VIC Office**

Level 40, 140 William St, Melbourne Vic 3000.  
Phone: (03) 9002 4670

**NSW Office**

Level 14, 153 Macquarie Street Parramatta.  
Phone: (02) 9190 8493

**[www.embail.au](http://www.embail.au)**

BAILS SAFE HEALTH GROUP PTY LTD  
**ABN:** 89 661 733 348