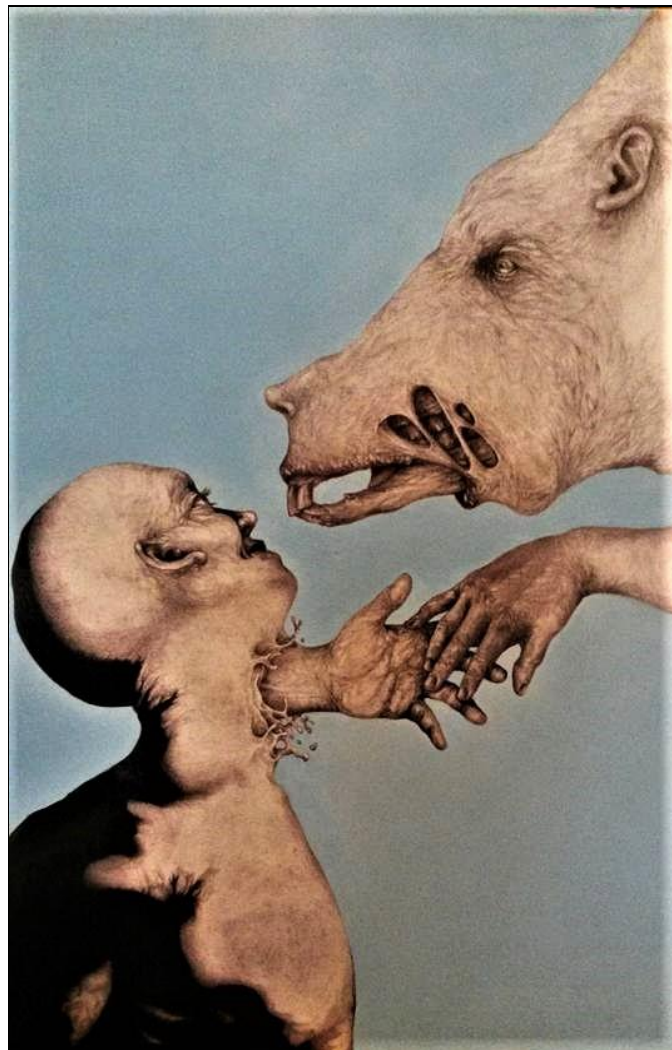


# Art Portfolio

Joseph Watson



"Caspar's Head" life-sized. Polymer clay.



"Blue Ground" 24in.x36in. Ballpoint Pen and India Ink.

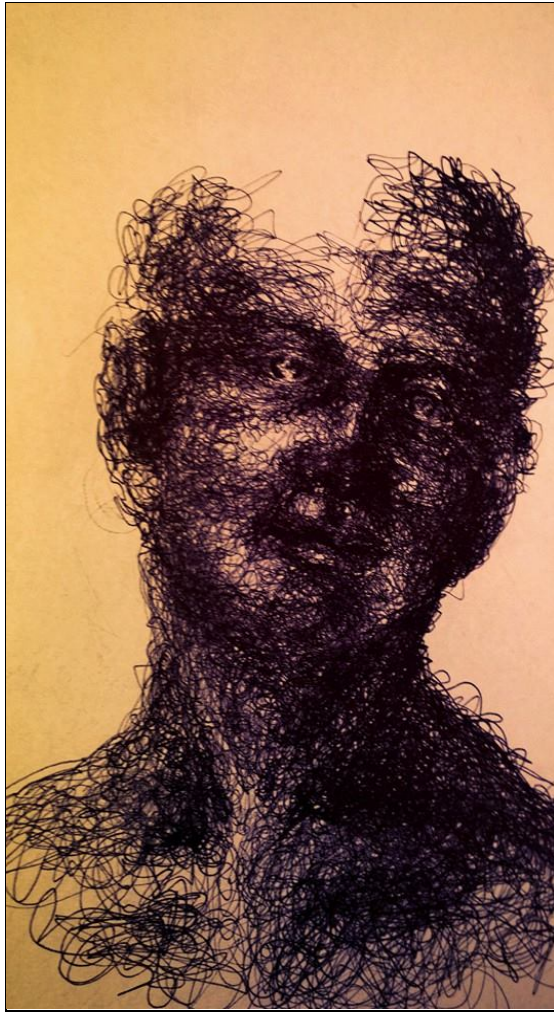


“Blue Ground” 48in.x72in. Ballpoint pen and India ink.

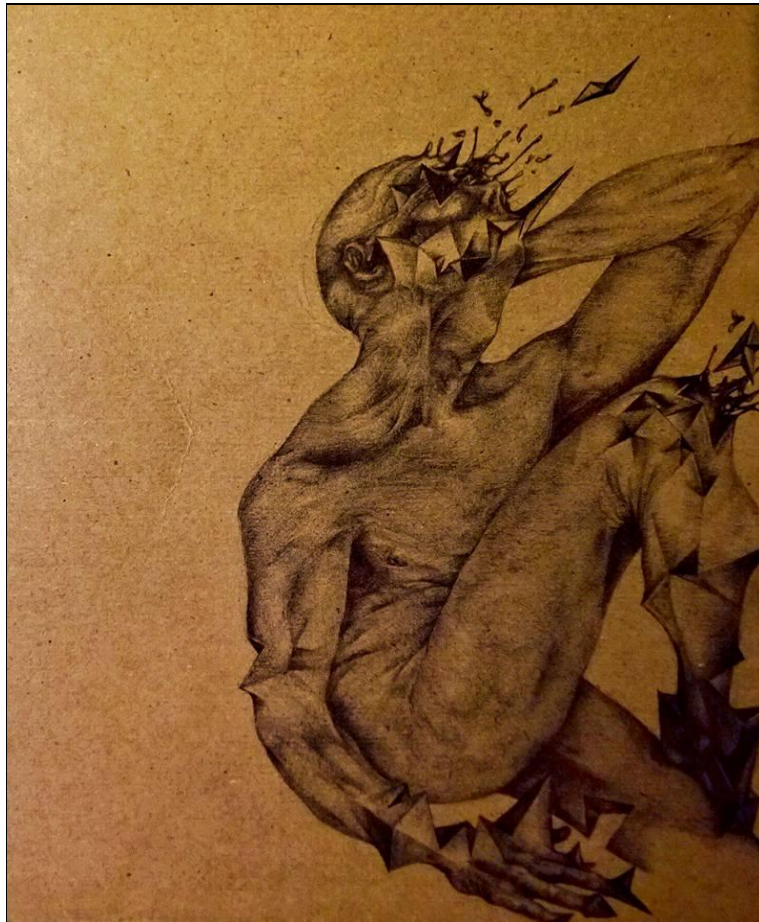




"Melting" 20in.x20in.x20in. Polymer clay.



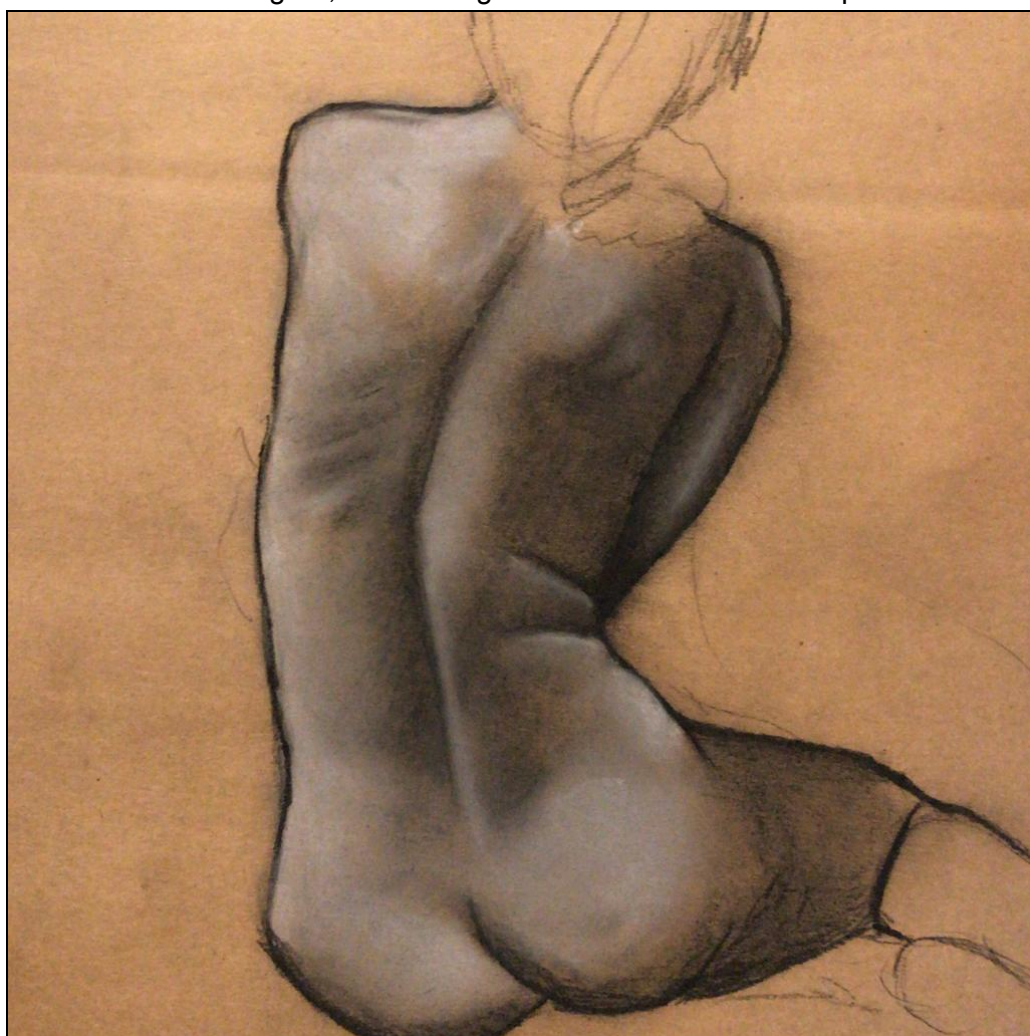
"Single Line Drawing" 9in.x12in. Ballpoint pen.



"Fractal" 9in.x12in. Ballpoint pen.

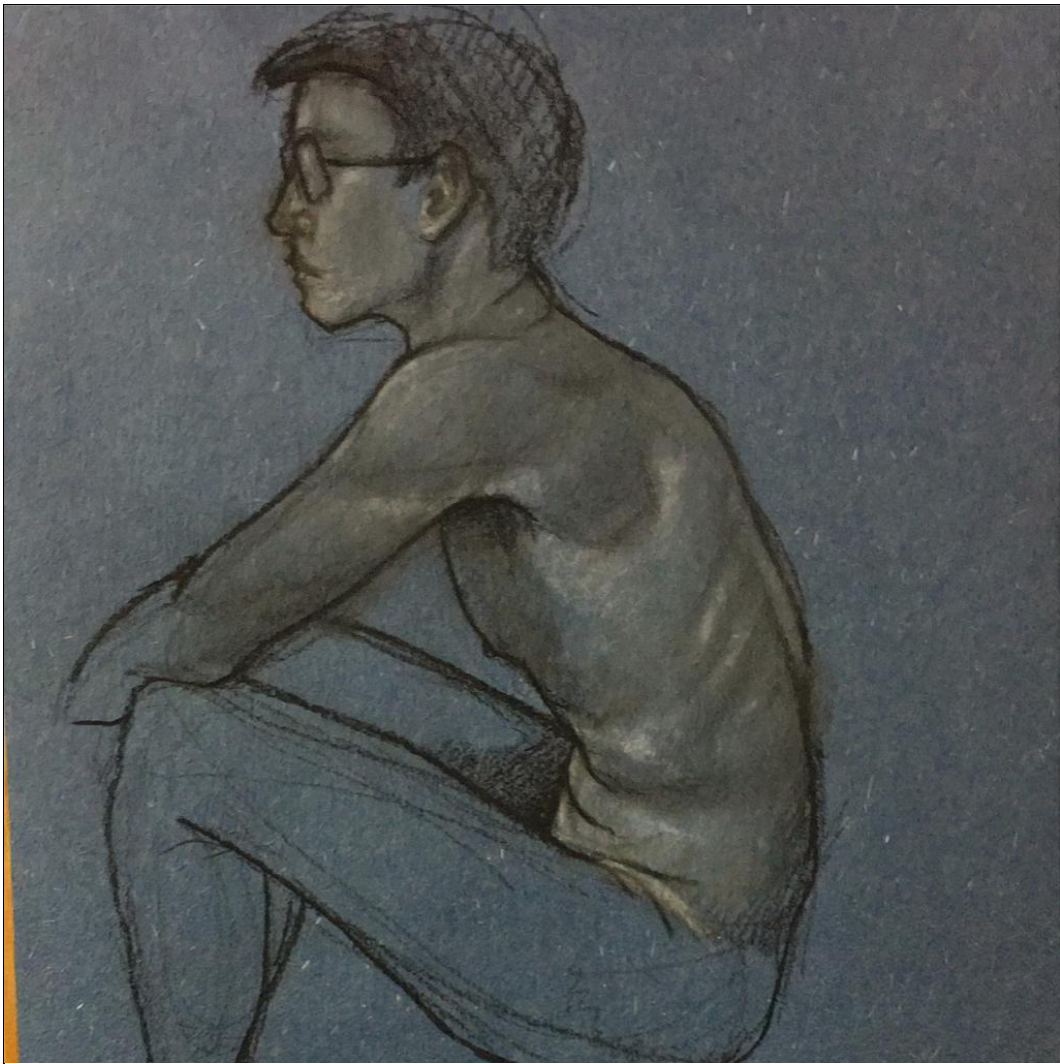


30 minute figure, life drawing. Black and white charcoal pencil.

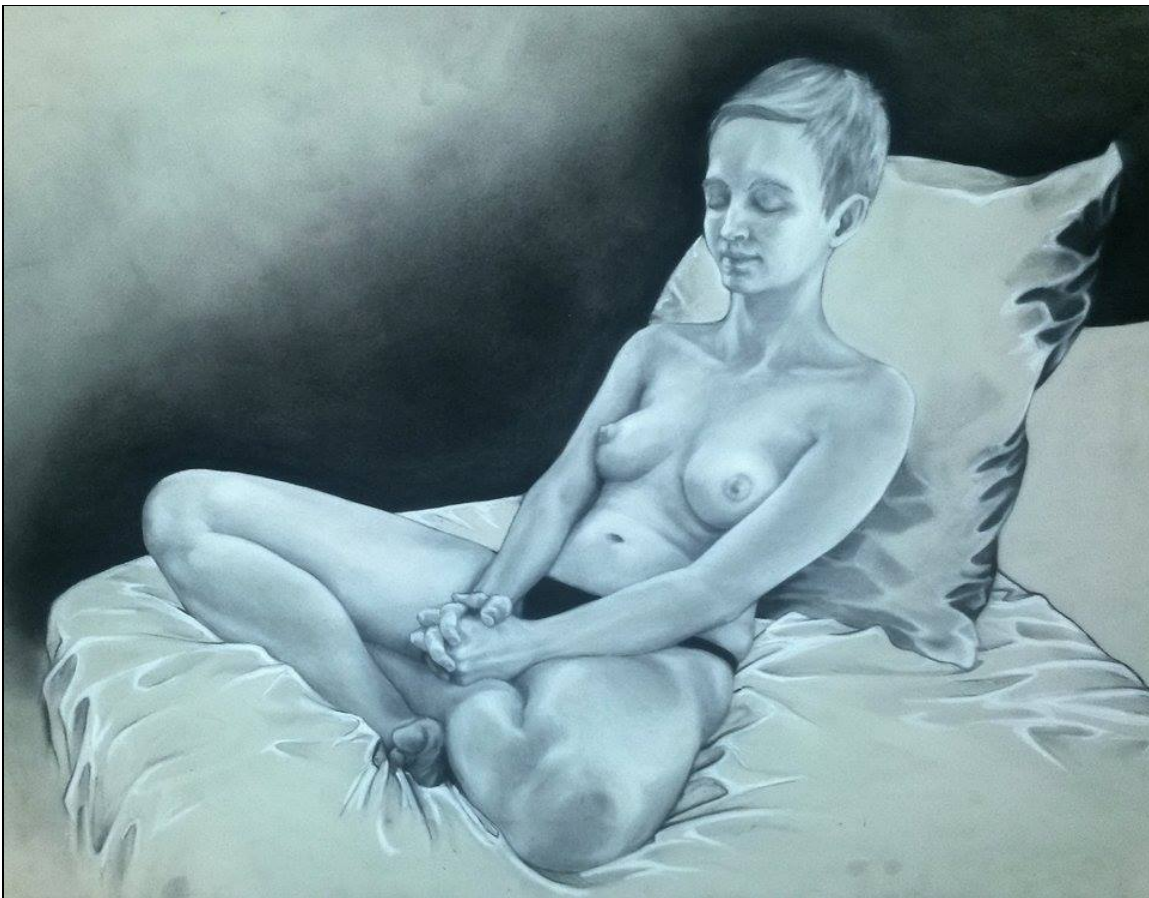


45 minute figure, life drawing. Black and white charcoal pencil.



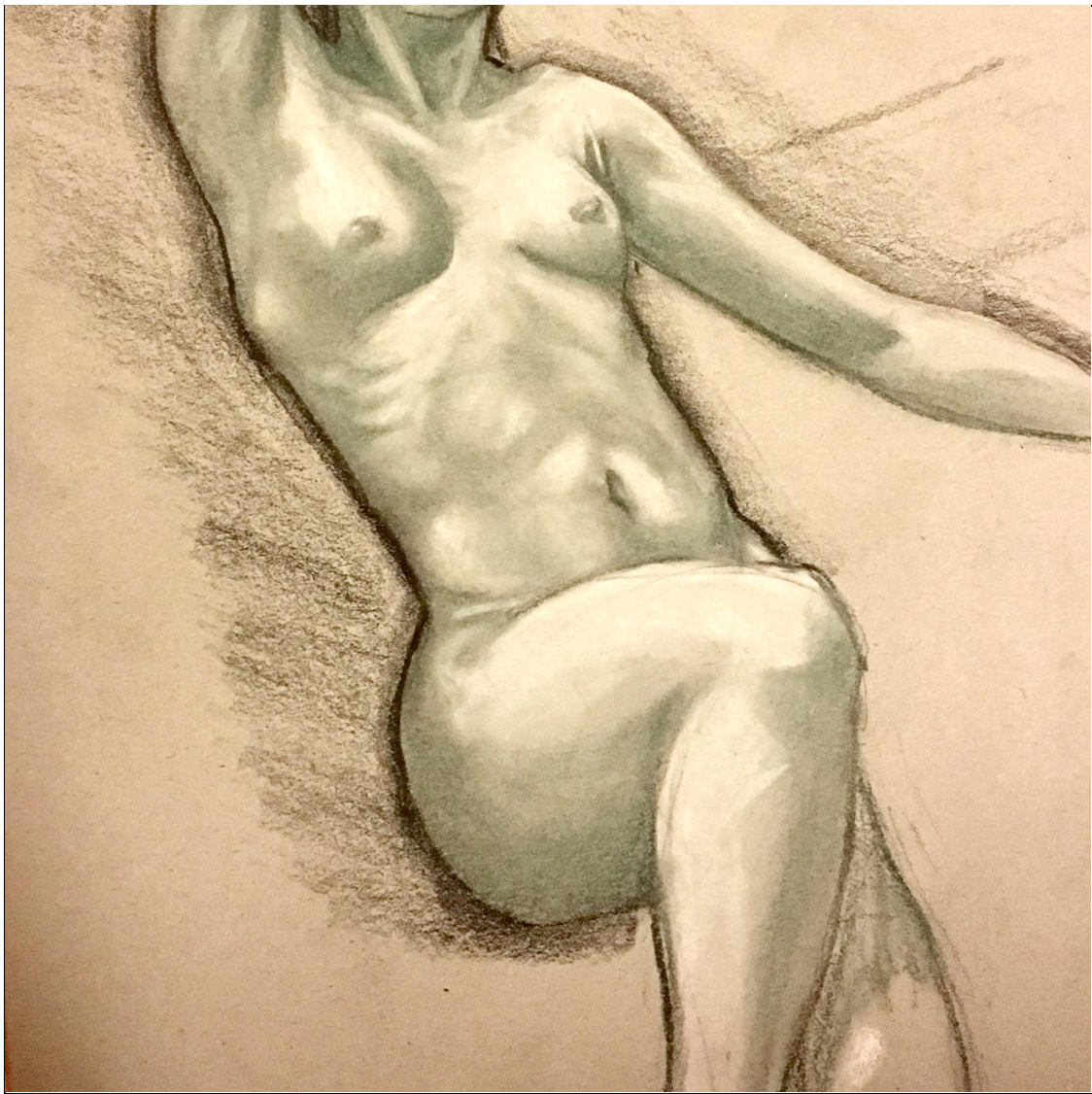


15 minute figure, life drawing. Black and white charcoal pencil.



"Portrait" 24in.x36in. Black and white charcoal pencil.





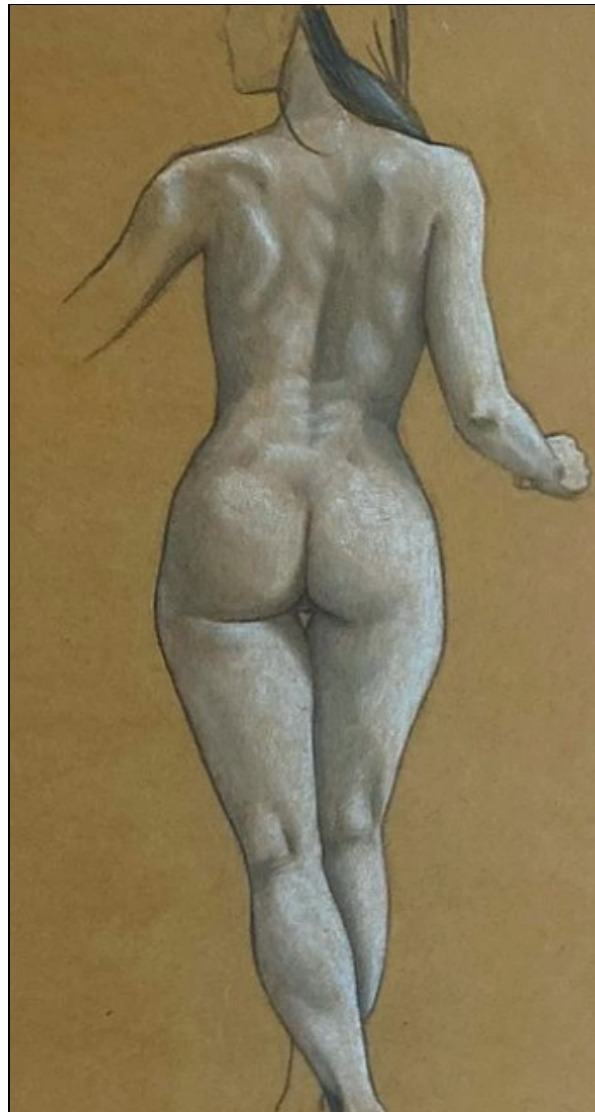
20 minute figure, life drawing. Green and white charcoal pencil.



45 minute figure, life drawing. Black and white charcoal pencil.

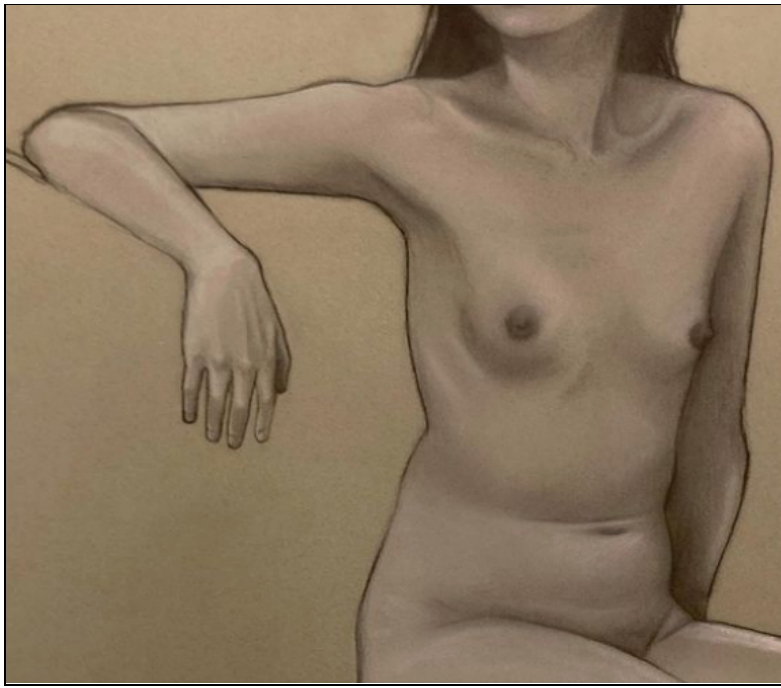


10 minute figure, life drawing. Black and white charcoal pencil.



45 minute figure, life drawing. Black and white charcoal pencil.





45 minute figure, life drawing. Black and white charcoal pencil.



"Butt" 10in.x10in. black and white charcoal pencil.