



# NEXT LEVEL

A P P A R E L™

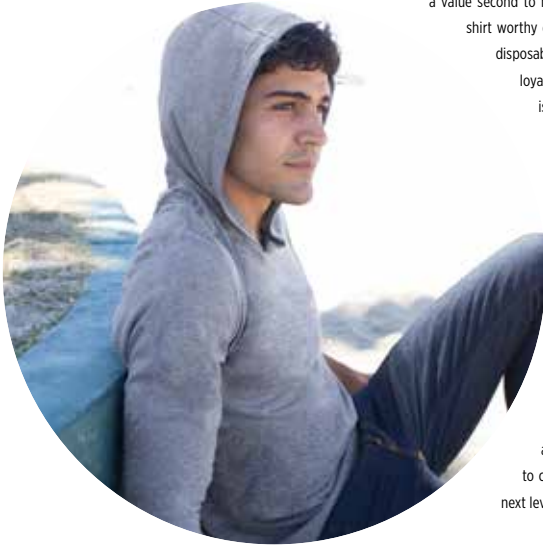
*Introducing*  
**YOUR NEW  
FAVORITE  
BRAND**



**MODERN FIT.  
TIMELESS COMFORT.**



# FREEDOM TO CHOOSE.



We started with a simple but powerful idea... create a favourite tee crafted from superior fabrics in sizes and fits for real people and make it available in all the best colours at a value second to none. We gave you the freedom to choose an inspirational shirt worthy of your message or design. We destroyed the notion of the disposable tee. From those early days we have built a following of loyal and valued customers that have spread the word about what is happening at Next Level Apparel.

Continuing our successful growth in the US and our extended reach into countries including Canada and Australia, we are excited to bring a number of styles, including 'your new favorite tee' to the EU. Featuring soft cotton, poly/cotton, tri-blend and innovative fabrics, such as sueded jersey, these styles give you the freedom to choose the tee to suit you.

We're grateful for our huge following of loyal brands, decorators, designers and marketers, and are dedicated to adding a new choice to the EU market and earning another loyal fan base, giving our customers the freedom to choose a garment that takes softness and printability to the next level.

Chief Sales Officer

# — TABLE OF CONTENTS —

<b>Introduction</b>	2	<b>NL6051</b> Unisex Tri-Blend 3/4 Raglan	15
<b>Table of Contents/ Style Index</b>	3	<b>NL6733</b> Women's Tri-Blend Racerback	16
<b>Cotton/CVC Introduction</b>	4-5	<b>NL6021</b> Unisex Tri-Blend Hoody	17
<b>NL3600</b> Men's Cotton Crew	6	<b>NL6010</b> Men's Tri-Blend Crew	18
<b>NL6210</b> Men's CVC Crew	7	<b>NL6710</b> Women's Tri-Blend Crew	18
<b>NL3900</b> Women's Boyfriend Tee	8	<b>NL6760</b> Women's Tri-Blend Dolman	19
<b>NL6610</b> Women's CVC Crew	9	<b>Sueded Introduction</b>	20
<b>Ideal Introduction</b>	10	<b>NL6410</b> Men's Sueded Crew	21
<b>NL1540</b> Women's Ideal V	11	<b>NL6480</b> Women's Sueded V	22
<b>NL1533</b> Ideal Racerback Tank	11	<b>NL6491</b> Sueded Zip Hoody	23
<b>NL6200</b> Men's Poly/Cotton Crew	12	<b>NL9300</b> Unisex PCH Pullover Hoody	24
<b>NL6240</b> Men's CVC V	13	<b>WRAP/Compliance</b>	27
<b>NL6233</b> Men's CVC Tank	13		
<b>Tri-Blend Introduction</b>	14		

# — STYLE INDEX —



**NL3600**  
Men's Cotton Crew



**NL6210**  
Men's CVC Crew



**NL3900**  
Women's Boyfriend Tee



**NL6610**  
Women's CVC Crew



**NL1540**  
Women's Ideal v



**NL1533**  
Ideal Racerback Tank



**NL6200**  
Men's Poly/Cotton Crew



**NL6240**  
Men's CVC Tank



**NL6233**  
Men's CVC Tank



**NL6733**  
Women's Tri-Blend Racerback



**NL6021**  
Unisex Tri-Blend Hoody



**NL6051**  
Unisex Tri-Blend 3/4 Raglan



**NL6010**  
Men's Tri-Blend Crew



**NL6710**  
Women's Tri-Blend Crew



**NL6760**  
Women's Tri-Blend Dolman



**NL6410**  
Men's Sueded Crew



**NL6480**  
Women's Sueded V



**NL6491**  
Sueded Zip Hoody



**NL9300**  
Unisex PCH Pullover Hoody

# 2 FABRICS.

**NL** NL3600

## MEN'S COTTON CREW

Fine Jersey  
32 singles 145gsm  
100% Ringspun Combed Cotton  
\*(Heather Grey 90% Cotton/10% Polyester)

## 16 COLORS

INCLUDING HEATHER GREY



XS-3XL; select colors 4XL

## PRINTERS' FAVORITE

\*100% COTTON TEE



# 2 FAVOURITES.



**NL** NL6210

---

**MEN'S  
CVC CREW**

---

CVC Jersey  
32 singles 145gsm  
60% Ringspun Combed Cotton  
40% Polyester

**17 COLORS**

INCLUDING SOLID BLACK AND WHITE



XS-3XL; select colors 4XL

**PRINTERS' FAVORITE**

60% COTTON /40% POLYESTER TEE

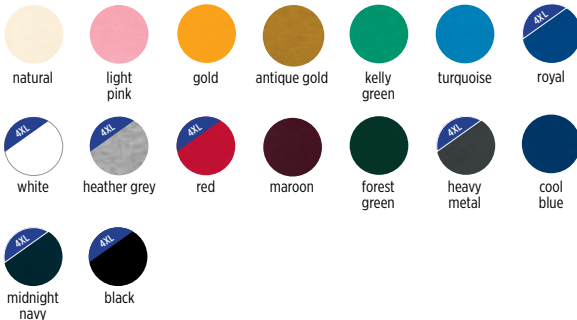
# 100% COTTON



## NL3600 | MEN'S COTTON CREW

100% ringspun combed cotton. Heather Grey 90% cotton/10% polyester. 32 singles/145gsm. 1x1 baby ribbed collar. Taped neck and shoulders. Side seams. Twin needle sleeves and hem. Tear out label.

XS-3XL; Select colors 4XL\*



# CVC JERSEY



## NL6210 | MEN'S CVC CREW

60% ringspun combed cotton/40% polyester. 32 singles/145gsm. 1x1 baby ribbed collar. Taped neck and shoulders. Side seams. Twin needle sleeves and hem. Tear out label.

XS-3XL; Select colors 4XL\*





**NL3900 | WOMEN'S BOYFRIEND TEE**

100% ringspun combed cotton. Heather grey 90% cotton/10% polyester. 32 singles/145gsm. Ladies cut. 1x1 baby ribbed collar. Taped neck and shoulders. Side seams. Longer length. Twin needle sleeves and hem. Tear out label.

XS-3XL







## NL6610 | WOMEN'S CVC CREW

60% ringspun combed cotton/40% polyester. 32 singles/145gsm. Ladies cut. 1x1 baby ribbed collar. Taped neck and shoulders. Side seams. Twin needle sleeves and hem. Tear out label.

XS-2XL



# PERFECT.



**THE SHIRT YOU HAVE BEEN WAITING FOR  
AT A PRICE YOU COULD ONLY DREAM OF.**

*Lightweight cotton poly jersey. 60% ring-spun combed cotton 40% polyester. 30 singles, 135gsm.*





## NL1540 | WOMAN'S IDEAL V

60% ringspun combed cotton/40% polyester. 30 singles/135gsm.  
1x1 baby ribbed V neck. Taped neck and shoulders. Side seams.  
Twin needle stitching. Tear out label.

XS-2XL



## NL1533 | WOMEN'S IDEAL RACERBACK TANK

Lightweight Cotton Poly Jersey. 30 singles 135g/4.0oz  
60% Combed Ring-Spun Cotton 40% Poly. Lightweight combed ring-spun cotton and poly blend. Racerback. Self-fabric binding. Side seamed.  
Curved hem. Colors are solid unless otherwise noted. Tear away label.

XS-2XL





**NL6200** | **MEN'S POLY/COTTON  
CREW**

65/35 Poly/Cotton Jersey. 40 singles 120g/3.5oz 65% Poly 35%  
Combed ring-spun cotton. Set-in collar with front cover stitch.  
Satin label.

XS-3XL



white



## NL6240 | MEN'S CVC V

CVC Jersey. 32 singles 145g/4.3oz 60% Combed Ring-Spun Cotton 40% Poly. Top of the line fabric that stands up to consistent wear without sacrificing fit or feel. Perfect for all your favorite heathered colors plus solid white and black. Set-in collar. Side seamed. Set-in collar 1x1 CVC baby rib. Tear away label.

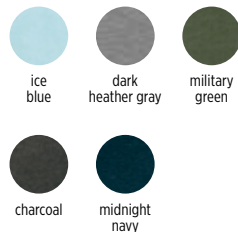
S-2XL



## NL6233 | MEN'S CVC TANK

CVC Jersey. 32 singles 145g/4.3oz 60% Combed Ring-Spun Cotton 40% Poly. Top of the line fabric that stands up to consistent wear without sacrificing fit or feel. Perfect in heathered colors. Self-fabric binding. Side seamed. Tear Away Label.

XS-2XL



# HANDCRAFTED.



## TRI-BLEND COLLECTION

A PERFECT BLEND THAT IS INCREDIBLY SOFT WITH GREAT  
DRAPE, STRETCH AND RECOVERY.

YOUR FAVORITE VINTAGE LOOK IN 7 HANDCRAFTED STYLES.

---

*Tri-blend jersey. 50% polyester 25% ringspun combed cotton 25% rayon. 32 singles, 145gsm.*



## NL6051 | UNISEX TRI-BLEND 3/4 SLEEVE RAGLAN

50% polyester/25% ringspun combed cotton/25% rayon. 32 singles/145gsm. Contrast 1x1 baby ribbed collar. Contrast raglan sleeves. Side seams. Twin needle stitching.

XS-3XL

colours listed: sleeve/body



premium heather/  
heather white



vintage royal/  
heather white



indigo/  
heather white



vintage black/  
heather white



vintage red/  
premium heather



vintage navy/  
premium heather



vintage black/  
premium heather



## NL6733 | WOMEN'S TRI-BLEND RACERBACK

50% polyester/25% ringspun combed cotton/25% rayon. 32 singles/145gsm. Relaxed fit. Racer back style. Overlock stitched neckline, armholes and hem. Side seams.

XS-2XL







## NL6021 | UNISEX TRI-BLEND LONG HOODY

50% polyester/25% ringspun combed cotton/25% rayon. 32 singles/145gsm. Three piece unlined layer hood. Crossover V neckline. 1x1 baby ribbed cuff. Taped neck and shoulders. Side seams. Twin needle hem.

XS-2XL



military green



premium heather



vintage black



vintage navy



vintage purple





## NL6010 | MEN'S TRI-BLEND CREW

50% polyester/25% ringspun combed cotton/25% rayon. 32 singles/145gsm. 1x1 baby ribbed collar.  
Taped neck and shoulders. Side seams. Twin needle sleeves and hem.

S-3XL



vintage red



vintage royal



premium heather



vintage navy



vintage black



heather white

## NL6710 | WOMEN'S TRI-BLEND CREW

50% polyester/25% ringspun combed cotton/25% rayon. 32 singles/145gsm. Ladies cut. 1x1 baby ribbed collar with front cover stitch. Taped neck and shoulders. Side seams. Twin needle stitching.

S-2XL



vintage red



premium heather



vintage royal



vintage navy



vintage black



heather white





## **NL6760** | WOMEN'S TRI-BLEND DOLMAN

50% polyester/25% ringspun combed cotton/25% rayon.  
32 singles/145gsm. Relaxed fit. 1x1 baby ribbed neckline with front cover stitch. Dolman sleeves. Side seams.  
Twin needle stitching.

XS-3XL



vintage  
black



heather  
white



# UNBELIEVABLE.



## SUEDED COLLECTION

**EXPERIENCE THE SOFT VELVET FEEL OF OUR  
BRUSHED SUEDED FABRIC.**

---

*Sueded jersey. 60% ring spun combed cotton 40% polyester. 32 singles, 145gsm.*



## NL6410 | MEN'S SUEDED CREW

60% ringspun combed cotton/40% polyester. 32 singles/145gsm. Soft feel. 1x1 baby ribbed collar. Taped neck and shoulders. Side seams. Twin needle sleeves and hem.

XS-3XL



red



royal



cool blue



heavy  
metal



midnight  
navy



black



white





## NL6480 | WOMEN'S SUEDED V

Sueded Jersey. 32 singles 145g/4.3oz 60% Combed Ring-Spun Cotton 40% Poly. Experience the soft velvet feel and the unique brushed finish of this incredible fabric. Prints like a dream. 1x1 sueded baby-rib set-in collar with front cover stitch. Side seamed. Satin label.

XS-2XL



red



royal



midnight  
navy



black



white





## NL6491 | SUEDED ZIP HOODY

Sueded Jersey. 32 singles 145g/4.3oz 60% Combed Ring-Spun Cotton 40% Poly. Velvet soft feel and unique brushed finish. Prints like a dream. Premium dyed matching #5 YKK kissing zipper, unlined hood, 1x1 ribbing at cuffs and waistband, unisex fit. Tear away label.

XS-3XL



mint



envy



cool  
blue



heavy  
metal



black





## 9300 | UNISEX PCH PULLOVER HOODY

PCH Fleece. 30 singles. 250g/7.4oz. 60% Cotton 40% Poly. Heathered fleece with unique pockets for a clean finished look. Metal eyelets, drawcord, 1x1 ribbing at cuffs, unisex fit. Tear away label..

XS-3XL



heather gray



heather mid-  
night navy



heather black





# FESTIVAL CREW



**PERFECT FOR SUBLIMATION**

**OUR SOFT AND BREATHABLE LIGHTWEIGHT POLY/COTTON IS PERFECT FOR WORKING OUT AND IDEAL FOR SUBLIMATION PRINTING.**

---

*Poly/Cotton Jersey. 65% Poly 35% Combined Ring-Spun Cotton. 40 singles, 120gsm.*



**WEAR IT. LOVE IT. SELL IT.**



**NEXT LEVEL**  
A P P A R E L™

# SOCIAL RESPONSIBILITY AND WRAP CERTIFICATION

---

At **Next Level Apparel** we are committed to the highest standards in every aspect of our business. Each member of our dynamic team is dedicated to delivering a superior customer service experience. We follow and adhere to the CPSIA (Consumer Product Safety Improvement Act) testing standards.

Our WRAP certified (Worldwide Responsible Accredited Production) factories are committed to the highest ethical standards of conduct and best quality practices. At Next Level Apparel we respect the rights of each individual and care for the environment.



## Environment

Our mission is to create a garment that destroys the notion of a disposable tee, and in turn, we try to minimise our waste as much as possible.

Reducing the use of plastic in our operations, our garments are supplied to our distributors without the use of additional plastic bags and wrapping.

Our manufacturers all comply with all applicable environmental laws and regulations.

## Our Promise

In addition to being sweat shop free and child labour free, we take social responsibility to the **next level** in everything we do.

# NEXT LEVEL

## A P P A R E L™

*Introducing*  
**YOUR NEW  
FAVORITE  
BRAND**

ON TREND  
AND CLASSIC  
STYLES

**WEAR IT.  
LOVE IT.  
SELL IT.**



FASHION'S  
NEW FREEDOM  
**YOU NEED TO KNOW  
ABOUT THIS TEE**