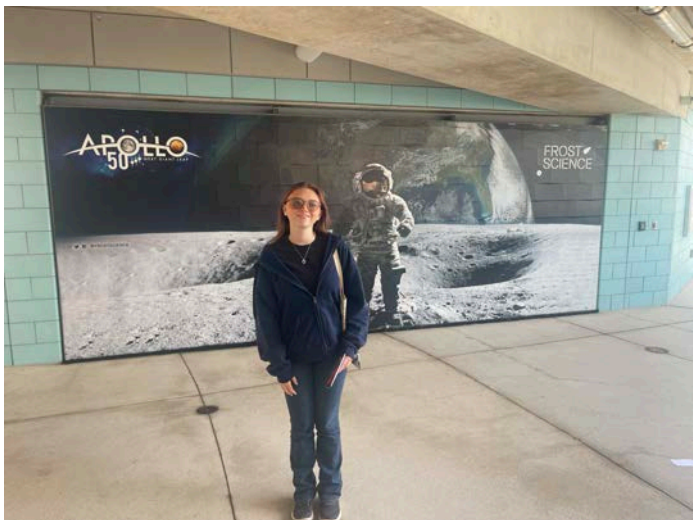
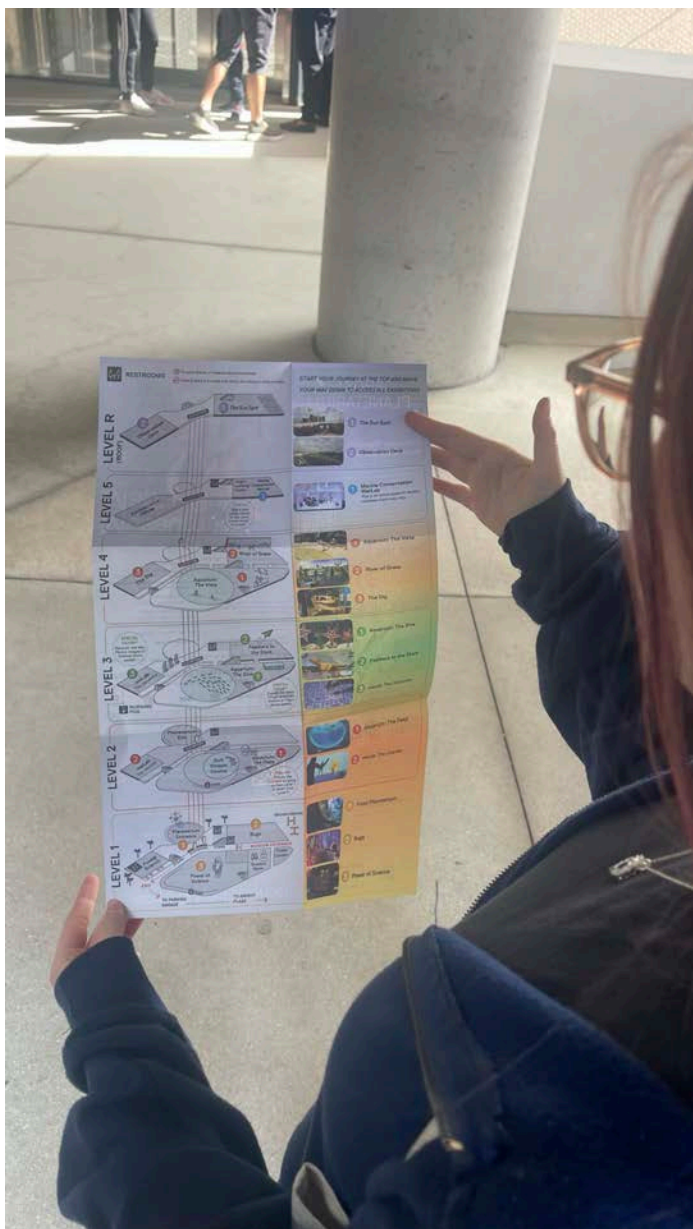


# 250105 BRA Miami Frost Museum of Science

The museum website is a great place to get tickets in advance. I recommend this as when you arrive, even on a Sunday visit, there will be quite a line to get tickets at the office. You can go straight to the entrance and start your day. There is ample parking below the museum.





Start with a planetarium visit. You need to make reservations on site as soon as you enter. Shows are every 45 minutes. It's been 30 years since I've been in a planetarium and this is my granddaughters first visit.



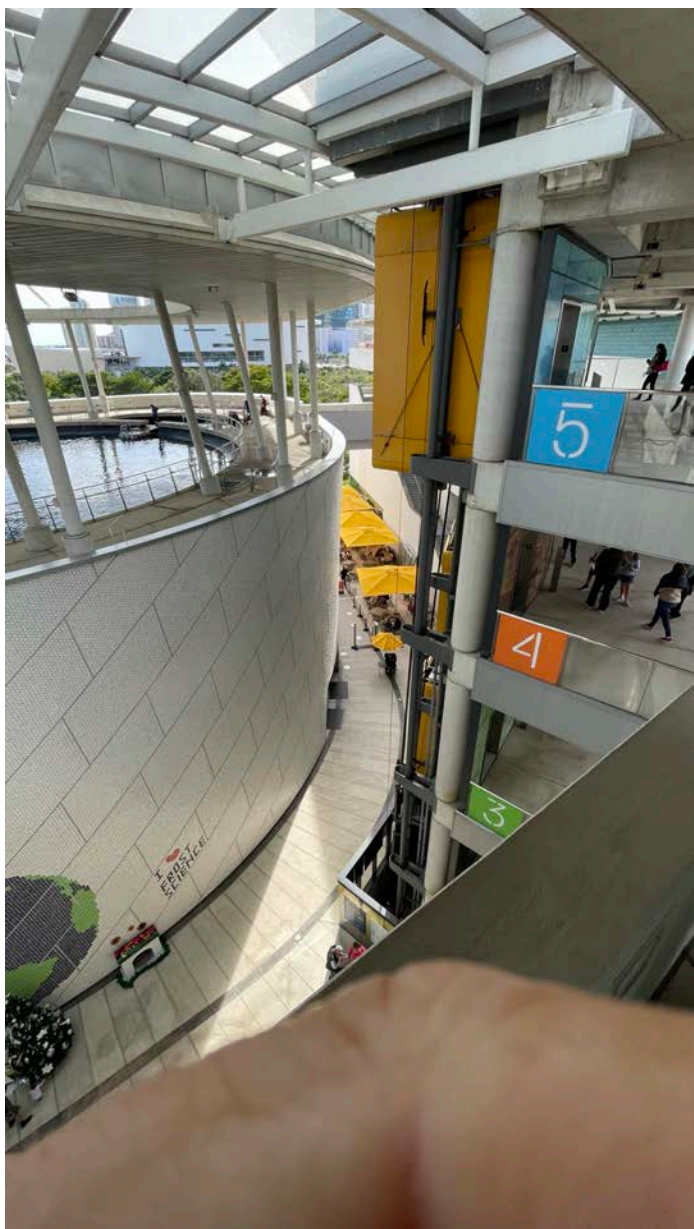


Really an amazing experience. The machines that re-create the heavens are really a masterpiece of work. It's wonderful to see these things still in existence, and that the interest in them still is high.



The museum complex is quite large. It's really a wonderful space and each floor has its own distinct exhibit. There are elevators and stairs that you can use to move between them.

---



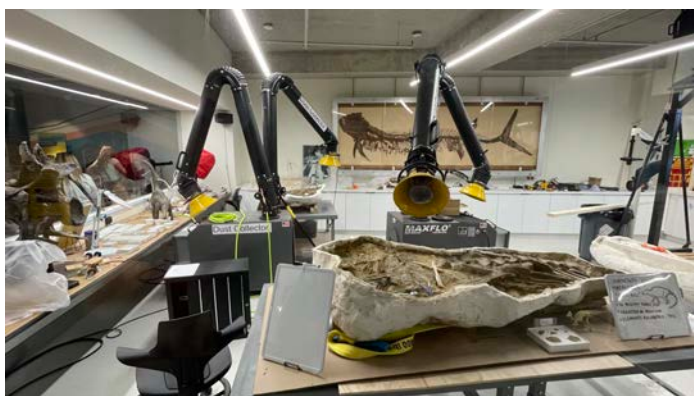
Miami is just a great place. It truly is one of the great cities of the world. There is a lot going on here. The museum is located near the cruise port and on a day like today it really is a wonderful sight.

---





This Museum has the largest most complete Tyrannosaurus rex skull ever discovered. It also has a laboratory with working archaeological finds. It's an arcane combination of exhibits, but it really works.



Wander around from space to space. Each has a distinct exhibit. But it's difficult not to stop in between and enjoy the fantastic view of Miami. On a day like today it was just fabulous and we couldn't stop taking pictures.



If it wasn't enough for the museum to have the exhibits it does, it also has a aquarium and aquatic exhibit at its heart. These massive tanks go down three floors, and you can see them from different locations. Of course, Santa elves were here from the North pole and they were in full diving gear.

---

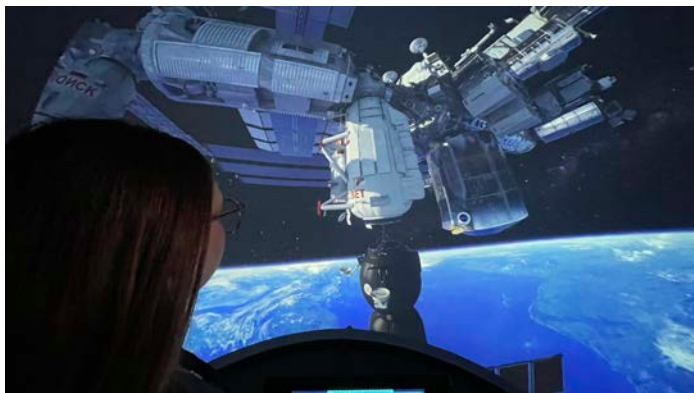








There are exhibits dedicated to flight and space exploration. There's also hands on exhibits for children. There's a lot to do. And families with children. Could really enjoy this space.



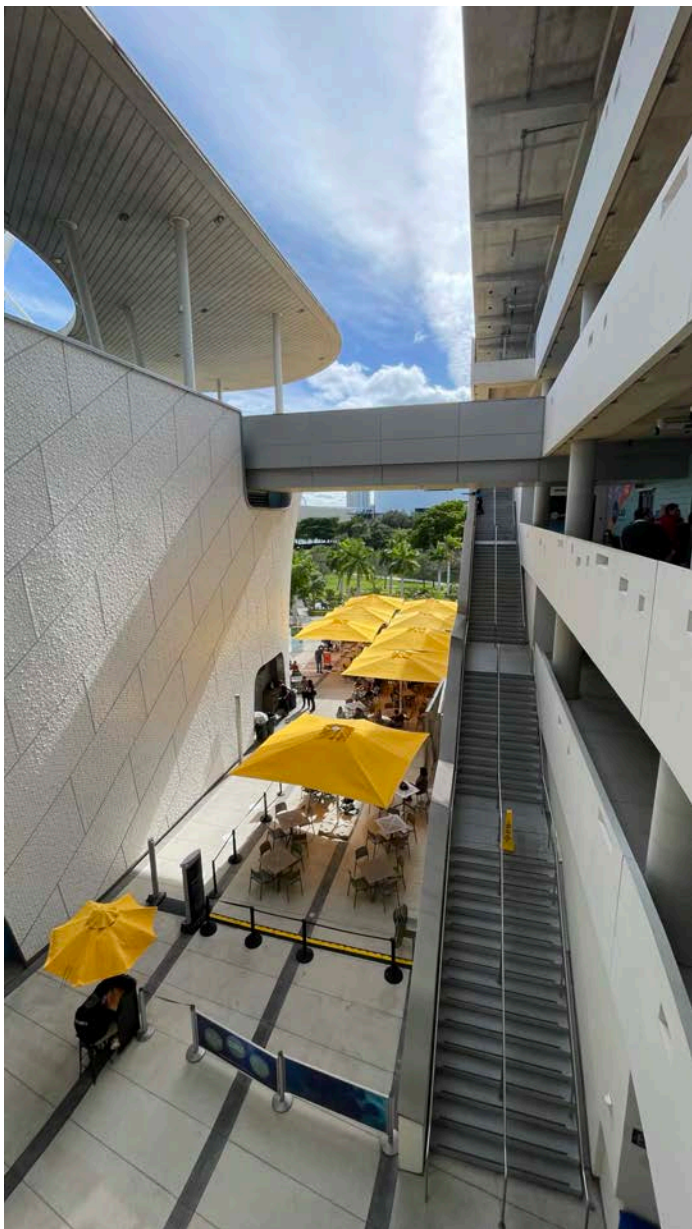


CVC. And keeping with sustainability advertises that all of its wood in concrete were sustainably source. The Wood was from sustainable forest, and the concrete was Made with industrial slag, which is a waste product from burning cold and processing steel. In the basement they have six 25,000 gallon wire tanks to collect all of the rainwater that Folsom the museum. This is used to irrigate all of the foliage.



Wander around. Take a look. Stop at each

location and admire the view. If you're lucky, you can have a day like we did, and it's just great. There's a full Cafe in restaurant, including a gift shop on the first floor. Well worth the \$28 entrance fee.



THE END