

# 250106 BRA Florida State Road 70 trip to Miami

To arrive at state Road 70 from the home office of St Petersburg one can take different routes. To expedite the trip I decided to take interstate 75 the state route 70 exit and proceeded to Miami from that point.

In Lakewood Florida we just passed Premier sports center. This is a sprawling complex. That is very impressive. It's not often you see so much acreage that is completely full of young kids playing sport. It's quite an extensive Compound and appears to have a lot of community support.



## Premier Sports Campus at Lakewood Ranch

**7K** likes • **7.2K** followers

The Premier Sports Campus, with Celebration-seeded grass on 22 fields, and more than 140 acres, can

Along route 70, you will pass the Tree Umph! Adventure Course. This appears to be a major entertainment venue in this area. Children can schedule their adventures and in a group setting all supervised do challenging events in a spirit of competition.

BUY  
TICKETS

Tree  
Umph!  
adventure course



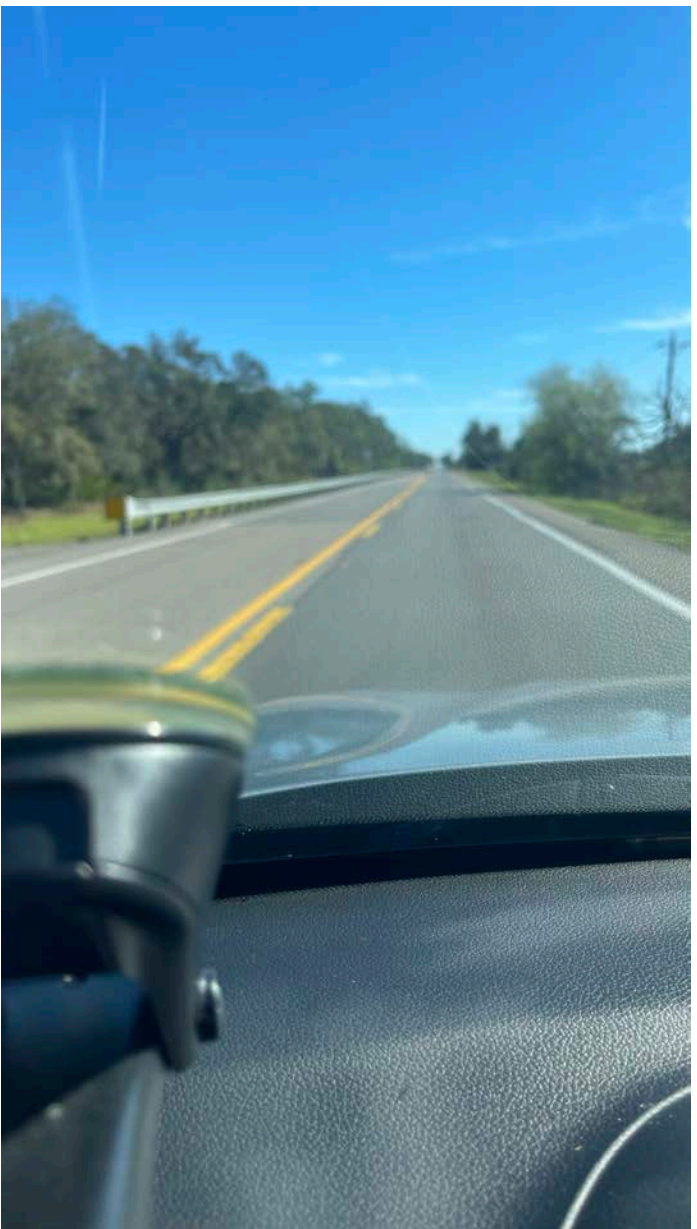
When was the last  
time you played in  
the trees?

Zip, Climb, Swing & Soar!

**Gear up for climbing, swinging  
& adventuring through the trees.**

This is classic Central Florida farmland. Once the expanse of Lakewood is behind, there's nothing here but flat Ridge Farm property. It's a classic de La Road through Florida scrubland.

---



The town of Myakka Florida is not much to see. Named after a river that flows through a pretty popular state park it a collection of homes with one intersection and a blinking light. It has one restaurant in town and not much else.

**Community Houses of Worship**

- [Myakka City United Methodist Church](#)
- [Bethany Baptist Church](#)
- [Myakka City Baptist Church](#)
- [Old Myakka United Methodist Church](#)
- [Myakka City Church of God](#)
- [Myakka Family Worship Center](#)
- [New Zion Baptist Church](#)
- [Sandy Baptist Church](#)



**Community Services**

- [Myakka City Community Center](#)
- [Myakka Living](#)
- [Myakka City Fire District](#)
- [Myakka City Elementary School](#)
- [Community Emergency Response Team](#)

**Community Interest**

- [Myakka City Historical Society](#)
- [Myakka City Lemur Reserve](#)
- [KGKI Radio - Internet broadcast from Myakka City](#)
- [Louise Parks Suggs' Myakka City Site](#)
- [VernaBethany.com - News of western Myakka City](#)
- [Christy's Bluebird Project](#)
- [Myakka City Topso Map](#)
- [The Myakka "Skunk Ape"](#)
- [Myakka Sunset Sky Screensaver](#) (Free download - 5 megs but worth the wait)



*[Return to top](#)*

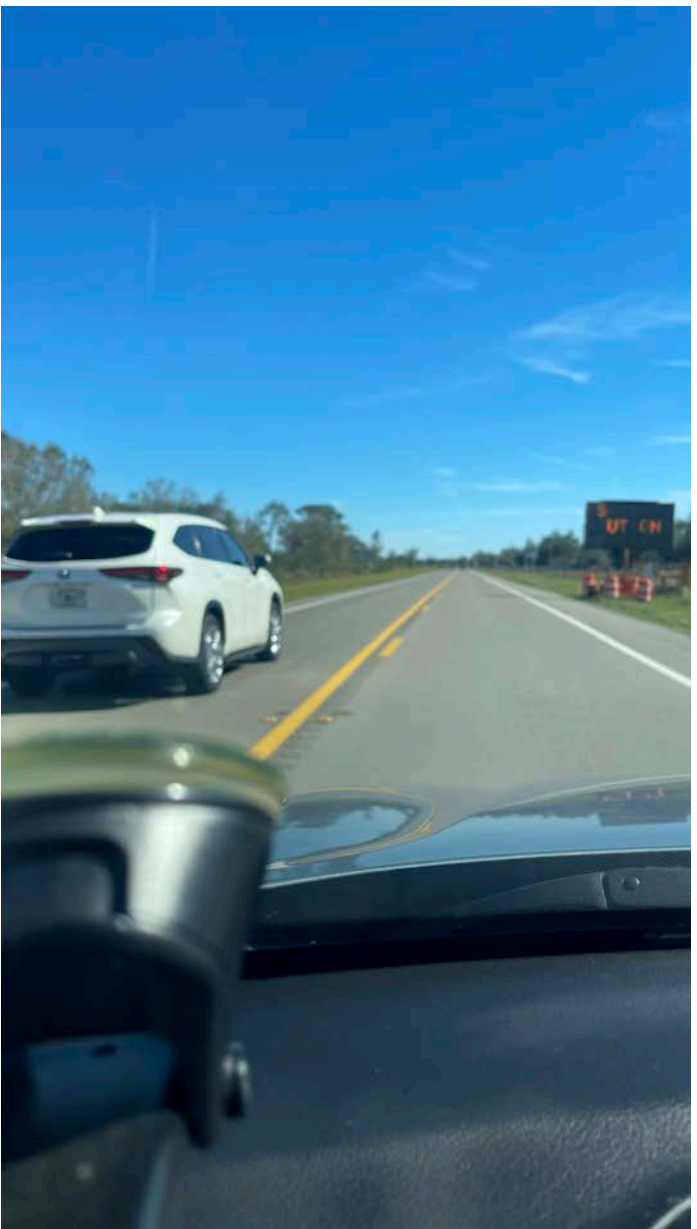
**County and State Government**

- [Manatee County Government](#)
- [Florida State Government](#)
- [Florida Dept of Highway Safety & Motor Vehicles](#)
- [Florida Fish and Wildlife Conservation Commission](#)

**Utilities**

- [Peace River Electric Cooperative](#)
- [Verizon](#)

This applies to Florida as I am sure it does to many other rural portions of states. If you're going to speed on these back roads, it's best to not do so at the head of a pack. Many of the municipalities in the small towns, gather a large portion of their operating budget from traffic Speeding tickets. So it's best not to speed unless you have to. I just let them go by and it's always good to have somebody in front of you. That's going faster than you are especially on these back roads.



Orange trees and the fruit that comes from them have always been a large part of the Florida mystique. In recent years because of insect infestation from Asia and greening, the Florida citrus industry has suffered greatly. It's interesting to see along mile 41 of State Road 70 Orange tree still harvested and it's fruit still commercially viable.

---





The other industry that Florida is competitive for, but not well known is cattle. The cattle can burn in Florida twice a year because of climate and Florida actually ranks first in the nation for cattle. This is misleading because it counts both adult and the calve heard. Florida is a caving center for the country and ships out a lot of young cattle to other states to be raised for slaughter. But central Florida is ideal for raising cattle.



OK Arcadia Florida is located along route 70. It's a very small quaint city located along the peace river. It's a beautiful quaint

little town with Lake Catherine at the center. The divided highway goes through it at a leisurely pace. The town seems asleep even in the



We pulled off on route 17 and headed south for 2 miles to Slim barbecue and grill. We try to use local restaurants whenever we can. It's a good popular local place with fresh barbecue food suited for all pallets.

---

slim's

# BAR-B-Q & GRILL

Since 1957

319 S. Brevard Avenue, Arcadia, Florida 34266  
(863) 494-2332



There is a 3.5% surcharge fee  
on all major credit cards









Along route 70 just outside of town is Mi Mundo Michoacan ice cream. Michoacan Mexico is famous for its ice cream and it looks like La Michoacana, which is a Mexican brand has opened a small store here.





Continuing on State Road 70 you turn right and go down US Highway 27 toward Miami. This is also an area of high white sand in which significant orchards of orange trees are planted. There is a good amount of cattle grazing in this area as well. This is the central part of Florida, which was exposed during the last Ice Age and is a band of white sand, which stretches down the spine of the state.

---





Located about 45 minutes south of the Florida 70 intersection, on US Highway 27, is Gator Ramo. This is a local attraction. It specializes in reptile shows, and other animal performances. It would be a great place to stop for a family with children. It's unusual to still find these attractions open in the United States. Most of these small family venues have long ago fallen to the large corporate attractions.



🔍 menu ☰



## TAKE ON THE FACE TO FACE CHALLENGE

This is the town of Moorehaven, which has one of the typical bridges that goes over some of the intercoastal waterway or channels that feed or empty the Everglades lake system. You should have great caution when you go down the ramps of some of these bridges. Famously, I remember a situation where police were stationed in such a way that I thought they were filming

a movie. As I came down the bridge, the police waved me onto the shoulder, where I joined a column of cars slowly inching their way up. We all came to a picnic table that was set out on the side of the road with a local policeman that was giving out speeding tickets. You see the speeding limit at the bottom of the bridge is 35 mph, a car is coming up the bridge from the 4 Lane Highway are going 65 mph. That difference almost 15 years ago meant a \$350 speeding ticket. Be very careful in these areas because the small municipalities make their money on traffic citations.



Clewiston Florida is in the center of an area called Sugarland. For those that don't know the US government subsidizes several types of agricultural products, considering these to be part of a national security involving food supply. One of them sadly is Kane sugar. There's no reason for the United States to subsidize Kane, but it does and this area is One of the biggest for growing sugarcane. You can tell by driving through the city that sugar is good business. Clueless and looks a lot more affluent than some of the other agricultural small towns that we've gone through. And even has a Sugarland festival, which is heavily advertised with national artists Scheduled to perform. The power of sugar.

---





MARCH  
15TH  
2025

Civic Park, Clewiston

FREE  
EVENT

2025 Lineup

I'm on route 27 as far as the I can see on both sides of the road or sugarcane Fields. Prominently displayed in one of the fields was a billboard for domino sugar. As formally stated, this is the sugar growing area of Florida and it's one of the few places in the United States where you can find sugarcane and sugar processing industry . It would not be here without government subsidy, but my wife bakes with domino sugar so I suppose it's a necessary evil.

---



We end our travel at the intersection of interstate 75 and Highway 27. There quite a lot to do in the stretch of Florida back road highways. One can only take their time and their family and try to enjoy each of these attractions. Well, worth your time to get off the highway and make a few extra stops and see the real back roads of the country. Don't settle for McDonald's when you can eat a freshly made sandwich from a local vendor. Don't shop at Dairy Queen when you can taste authentic Mexican handmade ice creams. Enjoy and be happy.



End