



Instruction Disclaimer

Dennis Kirk provides instructions to help our customers better understand how to install the products we sell. The instructions are exact copies of what the manufacturer includes with the product being sold.

That means the quality and accuracy of the instructions is solely dependent on what the manufacturer produces. We do our best to make the text legible and the pictures viewable. However, the end result depends largely on the quality of instructions the manufacturer provides.

Therefore, you will find that some instructions are not of the highest quality. Sometimes text is hard to read and pictures are not easy to see. At times you will find the overall look of the instructions to be less than professional. However, we feel it is better to provide what we have rather than provide nothing at all.

To the best of our knowledge the instructions and application information contained in the instructions is accurate. However, Dennis Kirk assumes no liability related to any errors that may be contained in the copy of the manufacturer's instructions we provide. Buyers are solely responsible to insure that product use is consistent with their application.

If you have any questions please contact us at customerservice@denniskirk.com or 800-969-7501 so we can further assist you regarding additional product information or any other business related questions.

Thank you for doing business with Dennis Kirk.



Assembly Instructions: S&S Pushrod Cover Kits & Pushrod Cover Seal Kits for 1936–2018 Harley-Davidson® & S&S Engines

Refer to the diagram to determine the correct positions for pushrod cover components, and the correct type of seals for various engine styles. Note that depending on the kit you have purchased, not all the components may be included. In these cases it is expected that stock components will be reused. In addition, not all applications will use all components shown.

1. Top pushrod seal

- Harley-Davidson® knucklehead and S&S KN-Series engines – this is a square o-ring. Same seal in all three positions.
- Harley Davidson® panhead, shovel, Evolution® and Twin Cam 88® 96™ and 103™, Milwaukee_Eight®, and S&S P, SH, V, and T-Series engines – the thickest o-ring of the three provided in the kit

2. Top Pushrod cover

3. Pushrod cover keeper

4. Cover cap - not included in some kits. Use stock part.

5. Cover cap spring - not included in some kits. Use stock part.

6. Cover cap washer - not included in some kits. Use stock part.

7. Middle seal

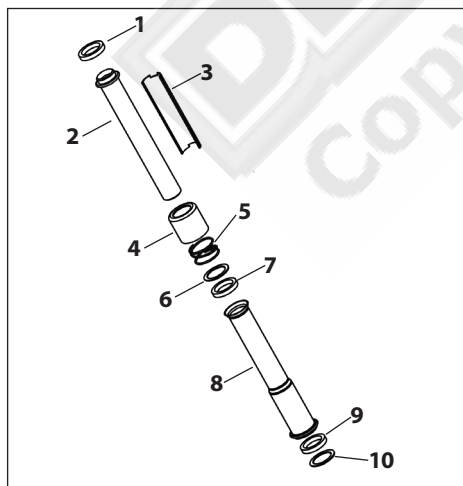
- Harley-Davidson® knucklehead and S&S KN-Series engines – this is a square o-ring. Same seal in all three positions.
- Harley Davidson® panhead, shovel, Harley-Davidson® Evolution® and Twin Cam 88® 96™ and 103™, Milwaukee_Eight® engines and S&S P, SH, V, and T-Series engines – the smaller diameter of the thinner o-rings provided in the kit

8. Lower pushrod cover

9. Lower pushrod seal.

- Harley-Davidson® knucklehead and S&S KN-Series engines – this is a square o-ring. Same seal in all three positions.
- Harley Davidson® panhead, shovel, and S&S P, SH-Series engines – This is a quad seal
- Harley-Davidson® Evolution® and Twin Cam 88® 96™ and 103™, Milwaukee-Eight® engines, and S&S V, and T-Series engines – the larger diameter of the thinner o-rings provided in the kit

10. Bottom cover washer – All Harley Davidson® Evolution® big twins and S&S V-Series engines, 1986-'90 Sportster® models, and all S&S SB-Series engines. (may not be included in S&S pushrod cover kit)



Assembly Instructions: S&S Pushrod Cover Kits & Pushrod Cover Seal Kits for 1936–2018 Harley-Davidson® & S&S Engines

Refer to the diagram to determine the correct positions for pushrod cover components, and the correct type of seals for various engine styles. Note that depending on the kit you have purchased, not all the components may be included. In these cases it is expected that stock components will be reused. In addition, not all applications will use all components shown.

1. Top pushrod seal

- Harley-Davidson® knucklehead and S&S KN-Series engines – this is a square o-ring. Same seal in all three positions.
- Harley Davidson® panhead, shovel, Evolution® and Twin Cam 88® 96™ and 103™, Milwaukee_Eight®, and S&S P, SH, V, and T-Series engines – the thickest o-ring of the three provided in the kit

2. Top Pushrod cover

3. Pushrod cover keeper

4. Cover cap - not included in some kits. Use stock part.

5. Cover cap spring - not included in some kits. Use stock part.

6. Cover cap washer - not included in some kits. Use stock part.

7. Middle seal

- Harley-Davidson® knucklehead and S&S KN-Series engines – this is a square o-ring. Same seal in all three positions.
- Harley Davidson® panhead, shovel, Harley-Davidson® Evolution® and Twin Cam 88® 96™ and 103™, Milwaukee_Eight® engines and S&S P, SH, V, and T-Series engines – the smaller diameter of the thinner o-rings provided in the kit

8. Lower pushrod cover

9. Lower pushrod seal.

- Harley-Davidson® knucklehead and S&S KN-Series engines – this is a square o-ring. Same seal in all three positions.
- Harley Davidson® panhead, shovel, and S&S P, SH-Series engines – This is a quad seal
- Harley-Davidson® Evolution® and Twin Cam 88® 96™ and 103™, Milwaukee-Eight® engines, and S&S V, and T-Series engines – the larger diameter of the thinner o-rings provided in the kit

10. Bottom cover washer – All Harley Davidson® Evolution® big twins and S&S V-Series engines, 1986-'90 Sportster® models, and all S&S SB-Series engines. (may not be included in S&S pushrod cover kit)

