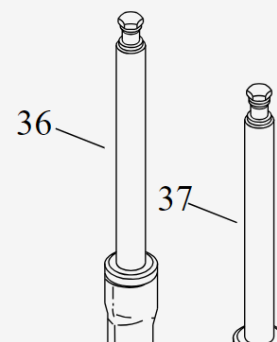
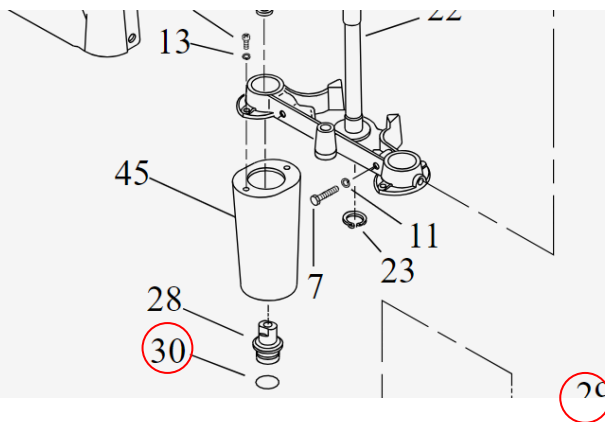
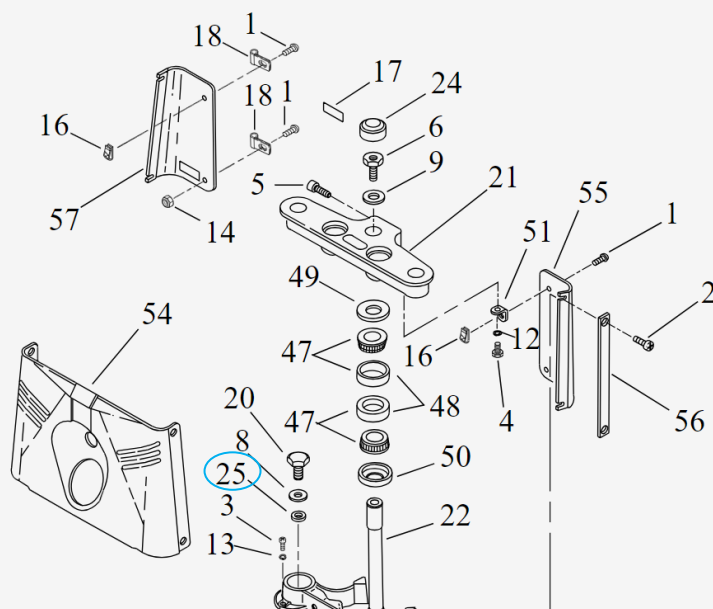
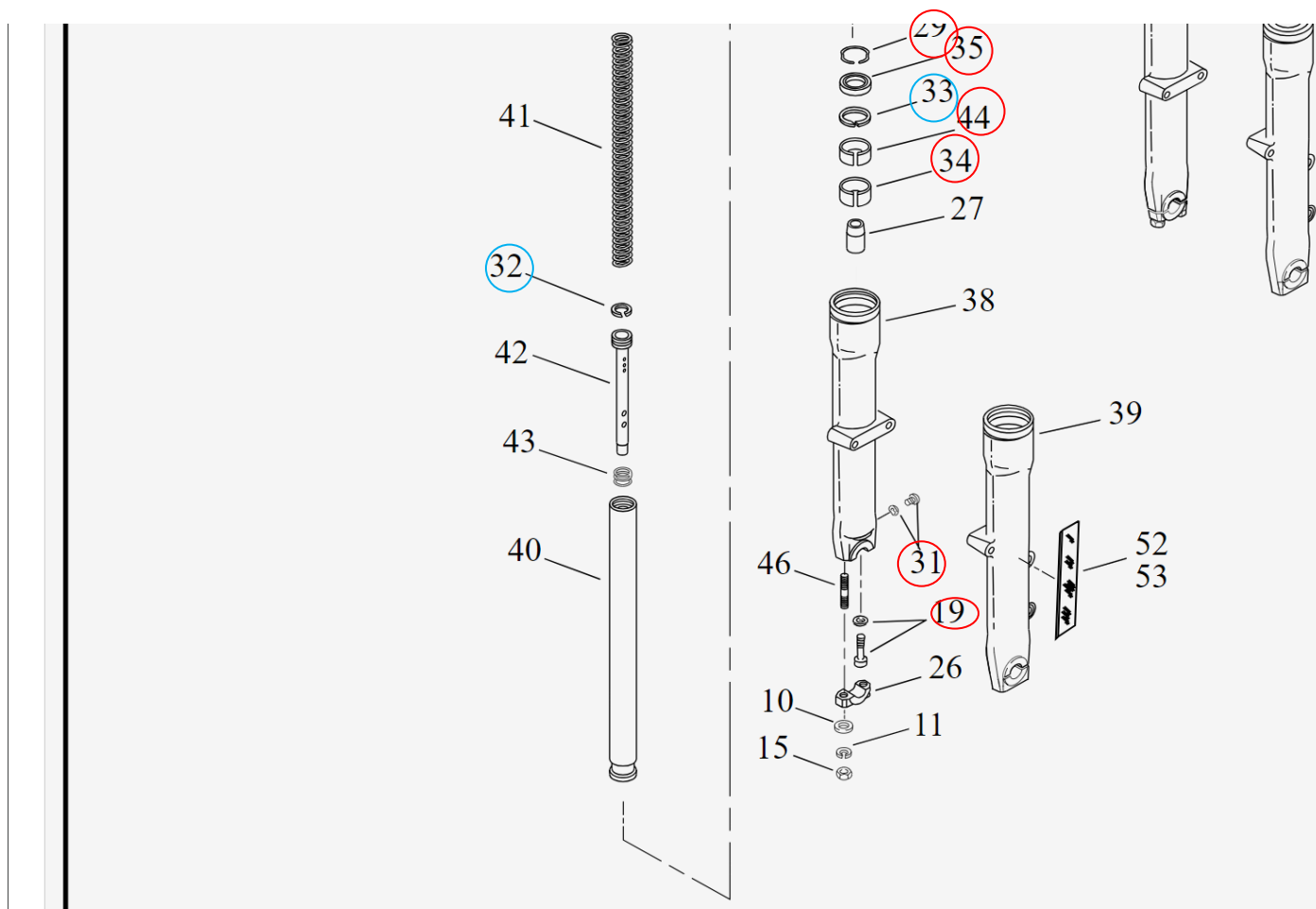


FRONT FORK - FLSTC/I & FLSTF/I (2 OF 2)

## FRONT FORK - FLSTC/I & FLSTF/I





INDEX NO.	PART NO.	DESCRIPTION	MODEL(S)
1	941	SCREW (4) FLSTC, FLSTCI, FLSTF, FLSTFI	
2	3538	SCREW (4) FLSTF, FLSTFI	
3	3892	SCREW (4) FLSTC, FLSTCI, FLSTF, FLSTFI	
4	3953W	BOLT (2) FLSTC, FLSTCI, FLSTF, FLSTFI	
5	4350A	SCREW FLSTC, FLSTCI, FLSTF, FLSTFI	

6	4453 BOLT	FLSTC, FLSTCI, FLSTF, FLSTFI
7	4729 BOLT (2)	FLSTC, FLSTCI, FLSTF, FLSTFI
8	5710 WASHER (2)	FLSTC, FLSTCI, FLSTF, FLSTFI
9	6655 WASHER	FLSTC, FLSTCI, FLSTF, FLSTFI
10	6702 WASHER (2)	FLSTC, FLSTCI, FLSTF, FLSTFI
11	7039 LOCKWASHER (4)	FLSTC, FLSTCI, FLSTF, FLSTFI
12	7041 LOCKWASHER (2)	FLSTC, FLSTCI, FLSTF, FLSTFI
13	7124 LOCKWASHER (4)	FLSTC, FLSTCI, FLSTF, FLSTFI
14	7686 LOCKNUT (2)	FLSTC, FLSTCI, FLSTF, FLSTFI
15	7748W NUT (2)	FLSTC, FLSTCI, FLSTF, FLSTFI
16	8108 SPEEDNUT (2)	FLSTC, FLSTCI, FLSTF, FLSTFI
17	14150-86 WARNING LABEL	FLSTC, FLSTCI, FLSTF, FLSTFI
18	41713-86 CLAMP (2)	FLSTC, FLSTCI, FLSTF, FLSTFI
19	45405-75A SCREW, w/ washer (2)	FLSTC, FLSTCI, FLSTF, FLSTFI
20	45419-80 CAP, slider tube (2)	FLSTC, FLSTCI, FLSTF, FLSTFI
21	45456-86B BRACKET, upper	FLSTC, FLSTCI, FLSTF, FLSTFI
22	45605-00A STEM & BRACKET ASSEMBLY, includes lower bearing cone	FLSTC, FLSTCI, FLSTF, FLSTFI
23	45611-86 RETAINING RING, fork stem	FLSTC, FLSTCI, FLSTF, FLSTFI
24	45670-80A CAP, fork stem	FLSTC, FLSTCI, FLSTF, FLSTFI
25	45733-48 OIL SEAL, fork tube plug (2)	FLSTC, FLSTCI, FLSTF, FLSTFI
26	45832-77A AXLE CAP, right slider	FLSTC, FLSTCI, FLSTF, FLSTFI
27	45803-97 LOWER STOP (2)	FLSTC, FLSTCI, FLSTF, FLSTFI
28	45838-77 PLUG, fork tube (2)	FLSTC, FLSTCI, FLSTF, FLSTFI
29	45842-77A RETAINING RING, oil seal (2)	FLSTC, FLSTCI, FLSTF, FLSTFI
30	45845-77 O-RING, slider tube plug (2)	FLSTC, FLSTCI, FLSTF, FLSTFI

31	45858-77	DRAIN SCREW, w/ washer, slider (2)	FLSTC, FLSTCI, FLSTF, FLSTFI
32	45859-77A	RING, damper tube (2)	FLSTC, FLSTCI, FLSTF, FLSTFI
33	45865-84	WASHER, slider (2)	FLSTC, FLSTCI, FLSTF, FLSTFI
34	45866-84	BUSHING, slider tube (2)	FLSTC, FLSTCI, FLSTF, FLSTFI
35	45875-84A	OIL SEAL (2)	FLSTC, FLSTCI, FLSTF, FLSTFI
36	45915-00	FORK SLIDER & TUBE ASSEMBLY, right	FLSTC, FLSTCI, FLSTF, FLSTFI
37	45916-00	FORK SLIDER & TUBE ASSEMBLY, left	FLSTC, FLSTCI, FLSTF, FLSTFI
38	45917-86	SLIDER, right	FLSTC, FLSTCI, FLSTF, FLSTFI
39	45918-00	SLIDER, left	FLSTC, FLSTCI, FLSTF, FLSTFI
40	45930-00	SLIDER TUBE (2)	FLSTC, FLSTCI, FLSTF, FLSTFI
41	45931-00	SPRING (2)	FLSTC, FLSTCI, FLSTF, FLSTFI
42	45932-00	DAMPER TUBE (2)	FLSTC, FLSTCI, FLSTF, FLSTFI
43	45933-86	SPRING, damper tube (2)	FLSTC, FLSTCI, FLSTF, FLSTFI
44	45940-84	BUSHING, slider (2)	FLSTC, FLSTCI, FLSTF, FLSTFI
45	45964-86	COVER, slider (2)	FLSTC, FLSTCI, FLSTF, FLSTFI
46	45998-73	STUD (2)	FLSTC, FLSTCI, FLSTF, FLSTFI
47	48300-60	ROLLER BEARING, w/ cup (2)	FLSTC, FLSTCI, FLSTF, FLSTFI
48	48315-60	BEARING CUP (2)	FLSTC, FLSTCI, FLSTF, FLSTFI
49	48361-80	DUST SHIELD, bearing, upper	FLSTC, FLSTCI, FLSTF, FLSTFI
50	48365-48A	DUST SHIELD, bearing, lower	FLSTC, FLSTCI, FLSTF, FLSTFI
51	50991-86	BRACKET, front panel (2)	FLSTC, FLSTCI, FLSTF, FLSTFI
52	59481-00	REFLECTOR, amber, right	FLSTC, FLSTCI, FLSTF, FLSTFI
53	59482-00	REFLECTOR, amber, left	FLSTC, FLSTCI, FLSTF, FLSTFI

54	67808-86	FRONT PANEL, buffed stainless steel	FLSTC, FLSTCI, FLSTF, FLSTFI
55	67816-86	BACK PANEL, left, rear	FLSTF, FLSTFI
	67821-87	BACK PANEL, left, rear w/ switch hole	FLSTC, FLSTCI
56	67819-86	TRIM STRIP, front panel (2)	FLSTF, FLSTFI
57	67814-86	BACK PANEL, right, rear	FLSTC, FLSTCI, FLSTF, FLSTFI