



# Healthcare Solutions

Patient Care Products, Handwashing Fixtures, Washroom Accessories

Celebrating the way the world washes.



# Design with Care in Mind

Designing for healthcare means creating a safe, clean, and comfortable environment for patients, staff, and visitors. From preventing the spread of harmful bacteria, to addressing the needs of the aging population and people of size, Bradley's Healthcare Solutions help you meet the critical needs of your next healthcare facility.

## Handwashing Solutions

Increase hygiene and safety with innovative and durable handwashing systems, all-in-one technology, hands-free faucets and soap dispensers, and a comprehensive line of Washroom Accessories.

## Accessibility

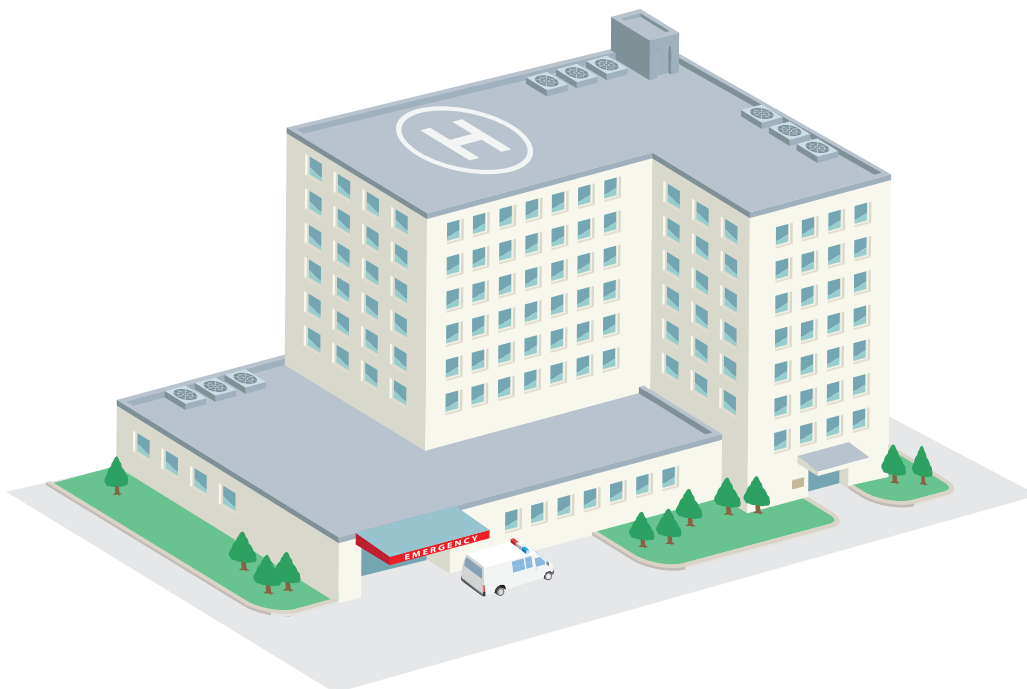
The majority of Bradley products meet the requirements of the Americans with Disabilities Act including Lavatory Systems, Washroom Accessories, Showers, Partitions, Grab Bars, and much more.

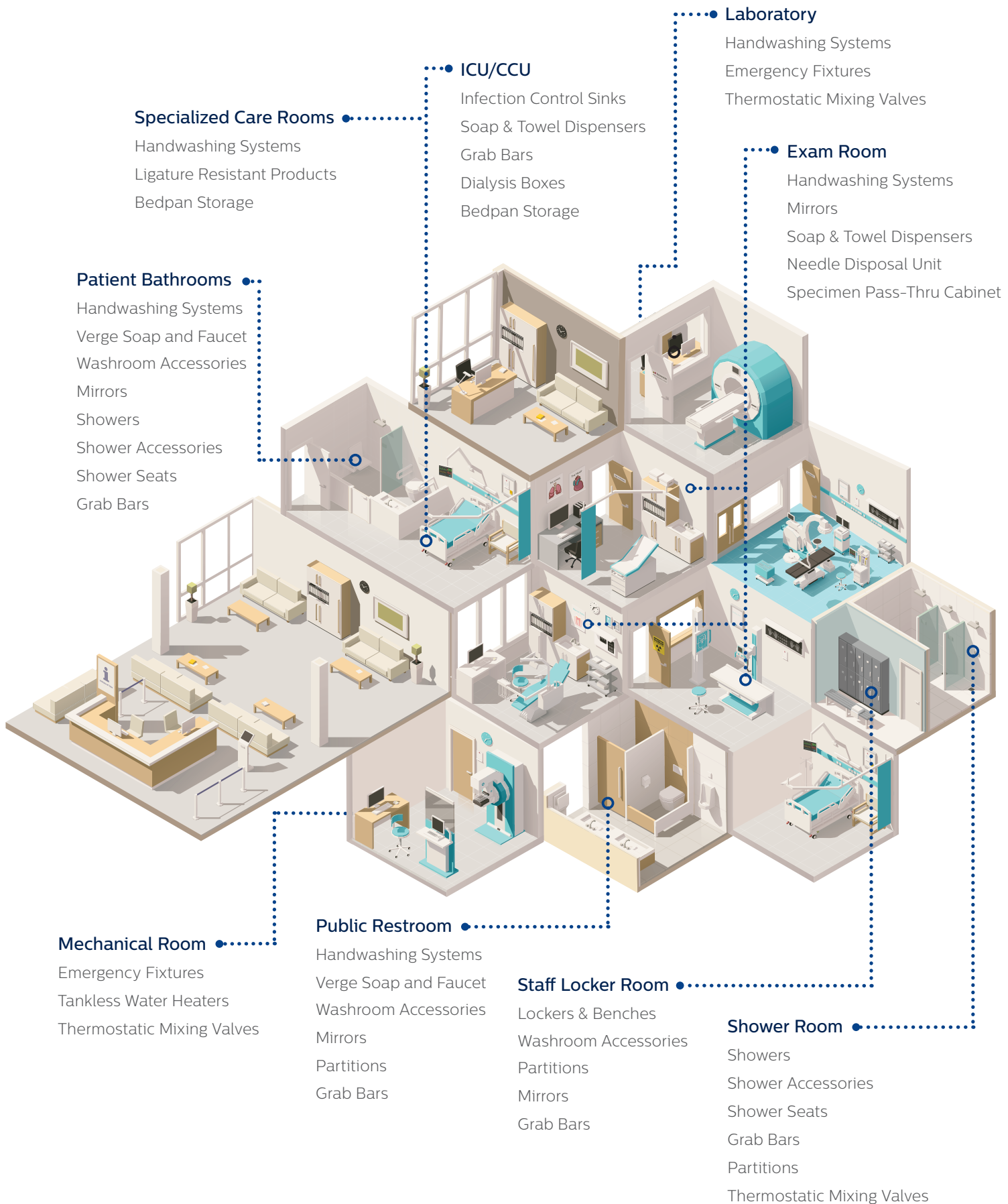
## SteadyCare™

Grab bars and shower seats with industry leading load ratings in a wide selection of configurations. Save time by specifying one grab bar or shower seat for all needs. Provide stability with coordinating products.

## Conservation & Sustainability

Conserving water and energy leads to more sustainable washrooms and cost-saving. With manufacturing innovations, products made from recycled materials, and award-winning product design, Bradley contributes to the green environment.







# Exam Room Solutions

In the course of a day, doctors and nurses see hundreds of people, each with their own unique symptoms. Safety and sterility are critical for both caretakers and their patients. Bradley offers a variety of exam room solutions, from handwashing to needle disposal units and specimen pass-through cabinets.



**Diplomat™ Soap Dispenser**  
Model 6A00



**Diplomat Towel Dispenser**  
Model 2A00



**Needle Disposal**  
Model 989

- **Exclusive!** Only fully recessed stainless steel unit on the market
- Biohazard logo
- Vandal resistant



**Specimen Pass-Thru Cabinet**  
Model 9813

**Foam Soap Dispenser**  
Model 6A01

**Sanitizer Dispenser**  
Model 6A02

## Terreon® Undermount Basins

Compliant with ADA standards, the HS-Series accommodates handwashing and the cleaning of items in patient rooms, exam rooms, and nursing stations while maintaining a clean, contemporary look. The flat bottom design maximizes basin capacity for multipurpose use.



HS-T01



HS-TR1



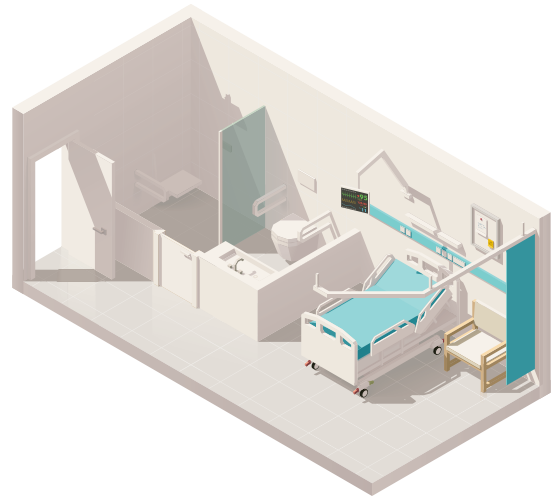
HS-TS1



# Patient & Residential Care Bathrooms

## Unmatched durability and stability for people of all sizes and abilities

In every facility, patient & residential care restrooms and shower rooms should accommodate a variety of needs, while making everyone feel welcome and safe in their surroundings. Our Bradley **SteadyCare™** product line is designed to do just that. Young or old, large or small, these products provide extra safety and stability, so every patient can maneuver more comfortably around restrooms and shower rooms.



## Shower Seats

SteadyCare shower seats are available with ratings from 500 pounds (227 kilograms) to an industry leading 1,200 pounds (544 kilograms), providing stability and comfort in shower rooms. Made of resilient phenolic and Bradmar™ solid plastic materials that fold up easily when not in use.



**Heavy Duty Folding Seat**  
Model 9592

- Supports up to 550 lb (249 kg) static load
- 1" (25 mm) thick solid Bradmar plastic seat



**Heavy Duty Folding Seat**  
Model 9562

- Supports up to 550 lb (249 kg) static load
- 1/2" (13 mm) thick solid phenolic seat



**L-Shaped, Bariatric Seat**  
Model 9571

- Supports up to 1,200 lb (545 kg) static load
- Seat 32" (812 mm) wide, projects 22 1/2" (572 mm) from wall



**Bariatric Seat**  
Model 958

- Supports up to 1,200 lb (545 kg) static load
- Seat 32" (812 mm) wide, projects 15" (381 mm) from wall

## Grab Bars

Always known for durability and reliability, Bradley SteadyCare grab bars are now stronger than ever, bringing more options to specifiers and designers. A wide selection of grab bar configurations are available to furnish many different restroom layouts and address a variety of user needs.

Grab bar models are now rated at 900, 1,000 and 1,250 pounds (408, 454 and 567 kilograms) to provide ultimate user stability.



### Heavy Duty Swing-up Grab Bar

8370-107 Series

Swing-up bars provide users steady support while occupying less space around toilets, baths and showers.

- Supports up to 550 lb (249 kg) static load
- Standard 30" (762 mm) length
- Available with integral toilet tissue dispenser
- Available with safety grip finish
- ADA compliant



### 812 Series

- Supports up to 1,000 lb (454 kg) static load
- Concealed mounting:
- 1 1/2" (3.8 cm) OD

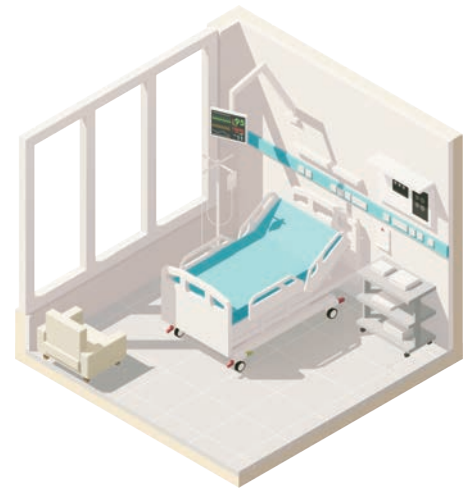


### 8320-106 Series

- Supports up to 1,250 lb (567 kg) static load
- Concealed mounting:
- 1 1/4" in (3.2 cm) OD

# ICU/CCU

When it comes to designing for Intensive and Critical Care Units, the goal is to reduce risk for the most at-risk. Bradley's ICU/CCU product solutions provide caretakers and patients alike with the highest possible levels of safety and sterility for lifesaving treatment and recovery, including hands-free washing stations, corrosion-resistant dialysis boxes, and deep well sinks that help keep ICU/CCU facilities bacteria, mold, and mildew free.



**Diplomat™ Soap Dispenser**  
Model 6A00

**Sanitizer Dispenser**  
Model 6A02



**DC Gooseneck IR Faucet**  
Model S53-327

- non-aerated laminar flow sprayhead



**Recessed Dialysis Box**  
Model 7920

- Corrosion-resistant stainless steel
- Alternative components and materials available



**Bed Pan/Urinal Cabinet**  
Model 990



**Terreon Deep Well Hygiene Sink**  
Model TDWL22

- Made of non-porous Terreon solid surface, the molded single piece design has no seams that can harbor harmful bacteria, mold or mildew
- Deep well basin and integral extra height splashes minimizes splashing and helps contain water
- Basin ledges are pitched towards bowl center to minimize puddling while basin bottom contours towards drain for quick drainage





## SafeCare™ Ligature-Resistant Series for specialized care settings.

SafeCare™ products were developed in consultation with behavioral health professionals for restrooms in specialized care situations. Handwashing, showers and accessory options are styled to suit patient rooms that are designed to enhance patients' feelings of a familiar, safe home-like environment.

### Additional ligature-resistant products and accessories include:

- Handwashing systems
- Wall showers
- Soap dishes
- Hooks
- Shelves
- Flush valves
- Mirrors
- Grab bars
- Toilet tissue dispensers



**Ligature Resistant Lavatory**  
Model HSL1

- Touch-free activation



**Wall Shower**  
Model HSR10



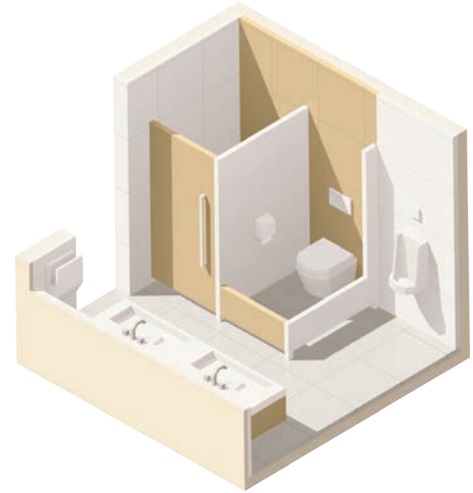
**Flush Valve Cover**  
Model HSL1



**Grab Bar**  
Model SA70 Series

# Public Washrooms

In every healthcare space, a commitment to cleanliness and comfort should extend far beyond the exam rooms and treatment spaces. The quality and cleanliness of more publicly accessible spaces—like restrooms—is just as important. From touch-free handwashing fixtures and accessories, to vandal-resistant partition cubicles and more, Bradley products work cohesively to create an unequaled modern restroom experience.



## All-in-One, Touch-Free WashBar®

   **CLEAN. RINSE. DRY.**

Providing a completely touchless handwashing experience, the WashBar® houses soap, water and dryer in one intuitive and attractive unit. End soap and towel waste and eliminate water splashing on users or dripping across the floor, all while creating a modern wash space free of clutter. The WashBar gives users a simple, seamless handwashing experience.



**COMFORTABLE & ACCESSIBLE**  
Everything is within reach – design allows easier access for children and wheelchair users



**SAFE**  
No more slipping on water dripped on the floor



**CLEAN**  
No more paper towel waste on the floor





## NEW! Verge Soap and Faucet

Create washroom harmony with the new line of touchless Verge coordinating soap dispenser and faucet sets. Never again sacrifice style with mismatched soap and faucets. Designed to complement the sophisticated Verge handwashing basins, the new soap and faucet pairs work beautifully with any basin to provide the finishing touch to your commercial restroom designs.



## Washroom Accessories

Bradley's stainless steel washroom accessories provide the clean look your restroom requires. With over 50 models available, the dual-curved Diplomat accessories suite offers design flexibility with a single aesthetic.



## Mills Partitions

Mills Partitions are suited for a variety of applications. Top quality materials including stainless steel, phenolic, powder coated and solid plastic provide key features, such as aesthetic appeal, vandal resistance, low cost and warranties.

*Nearly 30% of Americans use a public restroom simply to get away.* Mills Privacy partitions offer all the features you need to give users a private restroom retreat: extra height doors and panels, extra depth panels, and no-site options.



## Aerix® Hand Dryers

Bradley's complete line hand dryers cover any application or budget. **Aerix+** dryers incorporate the latest technology for the fastest drying times available.



Model 2923-2874



Model 2921-S

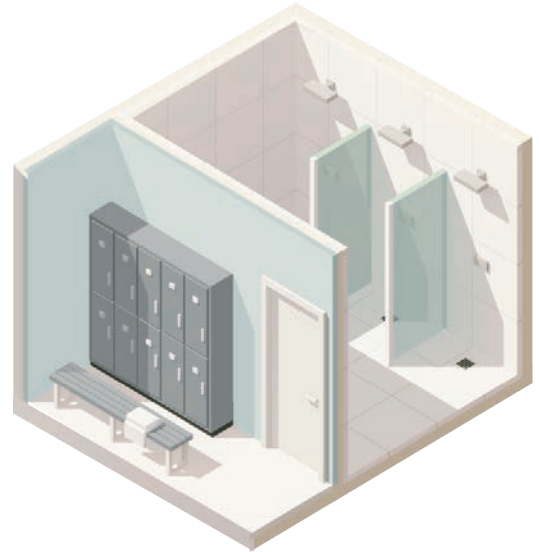


Model 2922-2874

# Shower and Locker Room

**Durable. Reliable. Diverse.**

This is your chance to reward those doing the most important work. To design a space where staff can escape from the rigors of their day to shower, relax, and safely, securely stash their things. Bradley offers a wide range of shower systems, valves, and accessories, as well as one of the most durable and secure locker options on the market.



## Barrier-Free Shower

Hand shower is connected to a 60" stainless steel flexible hose and attaches to a sidebar. A lever handle diverter controls the flow of water between the hand shower and showerhead.



## Cover-all Wall Shower

Pre assembled, for easy installation, heavy-duty construction.



## Equa-Flo HD

Pressure-balancing valve keeps water temperature and pressure at a consistent level. Shown with soft flow showerhead.



## Equa-Flo with Temperature Display

Pressure-balancing valve with digital temperature display.

## Shower Accessories

Accessory options to fit every washroom and every budget. Satin finish stainless steel design to match any decor in recessed, semi-recessed and surface-mounted styles.



**Curved Shower  
Curtain Rod**  
Model 9530



**Shower Curtain**  
Model 9533-4272



**Soap Dish**  
Model 9352



**Double Robe Hook**  
Model 9125



**Hat and Coat Hook**  
Model 9135



## Lenox® Lockers

Peace of mind for you and peace of mind for them.

Staff and patrons need to know their stored belongings are safe and secure. Facility managers need durable lockers that need little to no maintenance or repairs. In a high-humidity or high-traffic locker room Lenox® Lockers stand up to the toughest conditions.

- Will not rust or dent
- Will never need to be repainted
- 20-year warranty against rust, delamination or breakage under normal use

### Lock options



Key



Combination



Coin-operated



DCL keypad

Combination padlocks also available.



# Laboratory

The need for safety and sterility isn't exclusive to patient-centric spaces. Bradley's laboratory equipment is designed to provide the lab team with the safest, most sterile work environment possible. From completely customizable OmniDecks to a variety of eye and face wash fixtures, our laboratory products and solutions enable prevention and protection at every turn.



**OmniDecks** are perfect for use inside the lab. Completely customizable including faucets, waste receptacle openings, multiple bowl sizes and bowl placement.

The Terreon solid surface outlasts plastic laminate counter tops hands down. It cleans with common cleaners, and is easily repairable. An optional four-sided drip ledge around the sink perimeter helps keep water off the floor.



## Eye and Eye/Face Safety Fixtures



Deck-Mounted Swing-Activated Faucet/Eyewash  
Model S19-500W



Deck-mounted, Side Swing Halo Eyewash  
Model S19274C



Cabinet-mounted Halo Eye/Face Wash  
Model S19284J



# Mechanical Room

Architects and owners know that the guts of a place are just as important as what's on the surface. Our durable, reliable fixtures and solutions for the mechanical room can do the heaviest lifting for every facility. Explore a breadth of products that keep staff and patients safe and comfortable, from emergency eyewash fixtures and valves to electric tankless water heaters.

## Emergency Plumbing Fixtures

Emergency Plumbing Fixtures are essential components in laboratories, maintenance, kitchen, and laundry areas. Bradley's Halo technology provides 20% more coverage than other available products. Our broad product line includes eyewashes, drench showers and portable units.

Areas where emergency eyewash stations are recommended:

- Kitchen
- Laundry
- Chemical storage
- Janitorial closets
- Boiler room
- Water treatment
- Sterile processing
- Dialysis areas
- Pharmacy- IV mixing
- Pathology
- Radiology - film processing
- Microbiology
- Hematology
- Chemotherapy



On-Site Portable Gravity-Fed Eyewash  
Model S19-921  
Model S19-399 (Cart)



Wall-mounted Halo Eye-Face Wash, Plastic Bowl & Dust Cover  
Model S19224PDCFW

## Navigator® Thermostatic Mixing Valves

With single valve design, you just set it and forget it! Installation is a snap and it is so reliable, it is virtually maintenance free. Plus, these valves come with an industry exclusive 10 year warranty on a liquid-filled thermostat. Point-of-use models also available.



NEW! Navigator Thermostatic Mixing Valve  
Model S19-2010



NEW! Navigator Digital Mixing Valve  
Model S59-5200

## Bradley Electric Tankless Water Heaters

**POWERED BY KELTECH®**

Bradley electric tankless water heaters powered by Keltech® provide hot water on demand and save water and energy by heating water only when necessary. No large tank to keep heated 24/7/365. Bradley tankless heaters have a small footprint, only 3 square feet for the largest units. Only one electrical connection and water is required for easy installation and with no anodes or softeners, they require little maintenance.



Emergency Safety Shower Tankless Water Heater  
SNA Series



Large Industrial Tankless Water Heater  
CNA Series



VISIT [BRADLEYCORPCOM](http://BRADLEYCORPCOM) FOR INDUSTRY LEADING BIM-REVIT/SYSQUE LIBRARY AND TECHNICAL DOCUMENTS

**COMMERCIAL WASHROOMS BROUGHT TO LIFE**

HANDWASHING & DRYING | ACCESSORIES | PARTITIONS | LOCKERS  
EMERGENCY SAFETY FIXTURES | TANKLESS WATER HEATERS | VALVES

[bradleycorp.com](http://bradleycorp.com)  
800 BRADLEY +1 262 251 6000  
W142 N9101 Fountain Boulevard  
Menomonee Falls, WI USA 53051  
4217-2-0322

