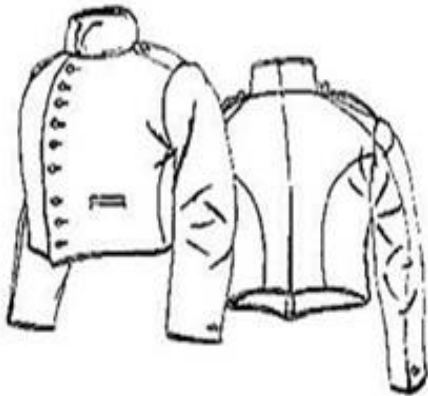


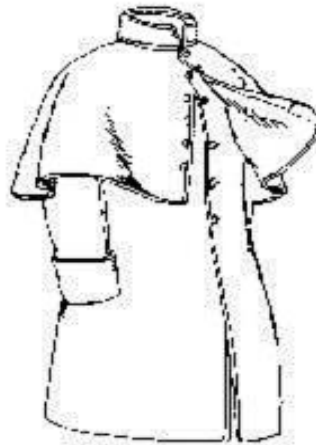
Marine Uniform Cloth and Color

Dark blue cloth represented relatively expensive, smooth, finely woven broadcloth, dyed in the cloth. Sky-blue signified a much cheaper (and easily procured), rougher material, often dyed in the thread and woven afterward. Dark blue, considered a "national" color, indicated formal dress wear, whereas sky-blue meant field or working wear. Kersey was a rough, coarse woven wool cloth, usually ribbed, used extensively for fatigue clothing.

Fatigue Coat



Greatcoat



Fatigue (Wheel) Hat



[All the above if from www.ghostgarrison.org]