

D Series

Smart panel apply to lighting switch, curtain control with long push/short push/reverse function.

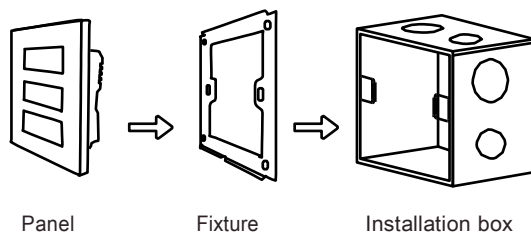
- Function feature: touch sensor, aperture back Light display, front laser LED indicator, two color led display
- Material: aluminum alloy wire-drawing / matt panel
- Color: Volcanic Gray, Silver, Black, Champagne Gold (support customization)
- Certificate: CE, KNX



PC-MK22.8.1/D



PC-MK22.8.1/D



Auxiliary supply voltage :	24VDC
KNX supply voltage :	30VDC
Bus current	≤12mA
Bus power	≤360mW
Size :	86*86mm or 86*93mm