

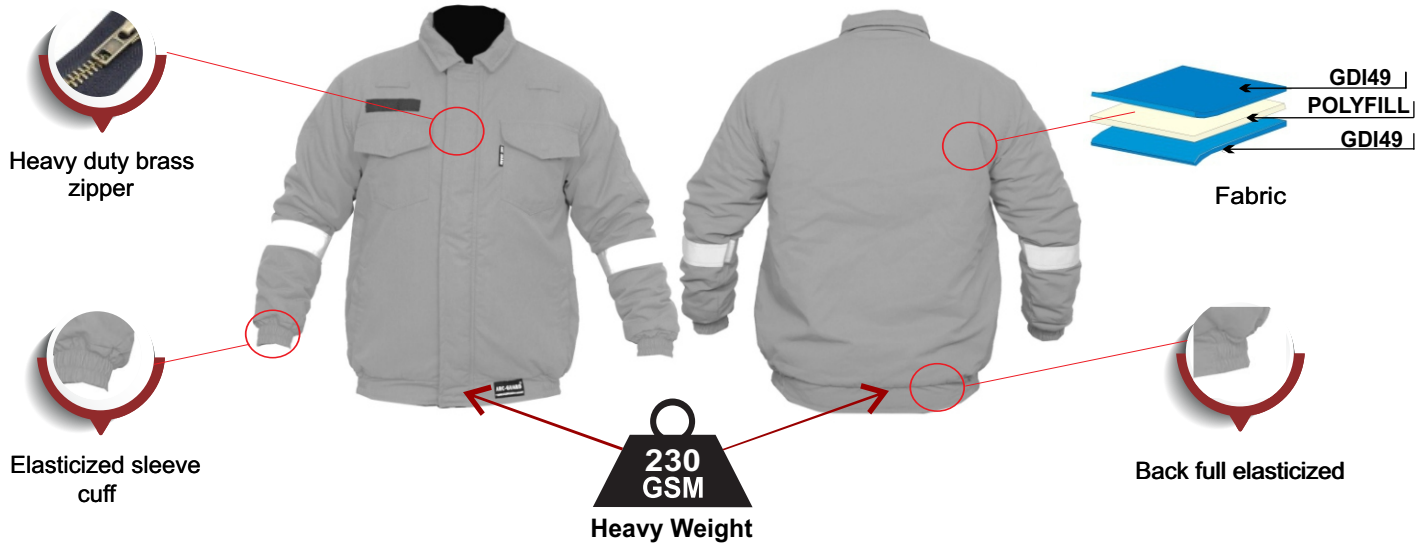


**ITEM: Winter Jacket | 230 GSM**

**ARTICLE: GDI49**

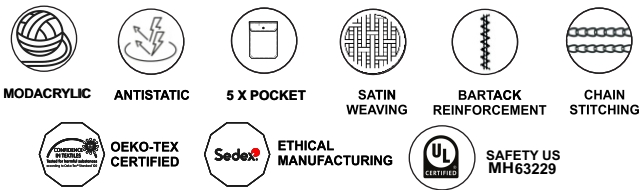
**DESIGN: CUSTOM**

**AREA OF USE:**



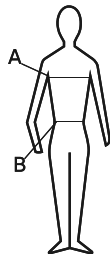
## PRODUCT FEATURES :

- Modacrylic based IFR fabric with 180GSM Shell and inner layer weight for maximizing user safety and comfort.
- Polyfill insulation middle layer provides excellent protection from cold weather.
- Non exposed snap parts for complete user safety.
- No direct skin contact with metallic fasteners .
- 5 pocket design for more functionality and storage.



## SIZING:

SIZE	UK / USA SIZE	A (CHEST)	B (WAIST)
XS	36	102-106	90-94
S	38	107-111	95-99
M	40	112-115	100-104
L	42	117-121	105-108
XL	44	122-126	109-112
2XL	46	127-131	113-116
3XL	48	132-136	117-120
4XL	50	137-141	121-123
5XL	52	142-146	124-126



\*Other size available on request.

## PRODUCT DESCRIPTION :

This Moda Acrylic Based IFR product is designed to provide Arc Flash protection, aligning with the growing trend of electric mobility and handling. In addition to safeguarding against Arc Flash incidents, it also shields users from flash fires and the dangers associated with mechanical entanglement. Its composition and design ensure comprehensive protection in environments where electrical hazards are prevalent, making it an essential choice for safety-conscious industries and applications. The product is UL (MH63299)certified.

## WASHING INSTRUCTIONS:



## SAFETY MARKS:



## PACKING DETAILS :

Quantity Per Box	10 Pcs
Box Dimension	L-15in x W-12in x H-15in
Weight (Net / Gross)	8.0 kg / 8.8 kg
CBM of Box	0.045
Pcs Weight (Approx.)	0.8 kg

