

Images from the Glass Lantern Slide Collection of Dr. Junius Harris

Credit: Center for Sacramento History's (CSH) collection of glass lantern slides. These were donated by the Sierra Sacramento Valley Medical Society. Thanks to CSH for their high quality scans of these plates and permission to utilize them for this exhibit.

These images are not to be copied, reproduced, or used in any way without permission from the Center for Sacramento History.

Dr. Junius Harris

Born in 1882, Junius worked as a houseboy for Dr. George White and when in high school assisted Dr. White in surgery (performed in the home at that time.) Avidly reading Dr. White's books he was able to pass a test to allow him to go directly to Medical School. In 1904 he entered Cooper Medical College in San Francisco, graduating in 1908 from Stanford (formerly Cooper Medical College). He returned to Sacramento as the only formally trained surgeon, and became the Deputy Director of the Sacramento County Hospital. An extremely accomplished surgeon, he performed all types of surgery, including neurosurgery. He was the Vice President of the American Medical Association. He had two sons, both of them were physicians.



PHYSICIANS
and
MEDICAL PRACTICE



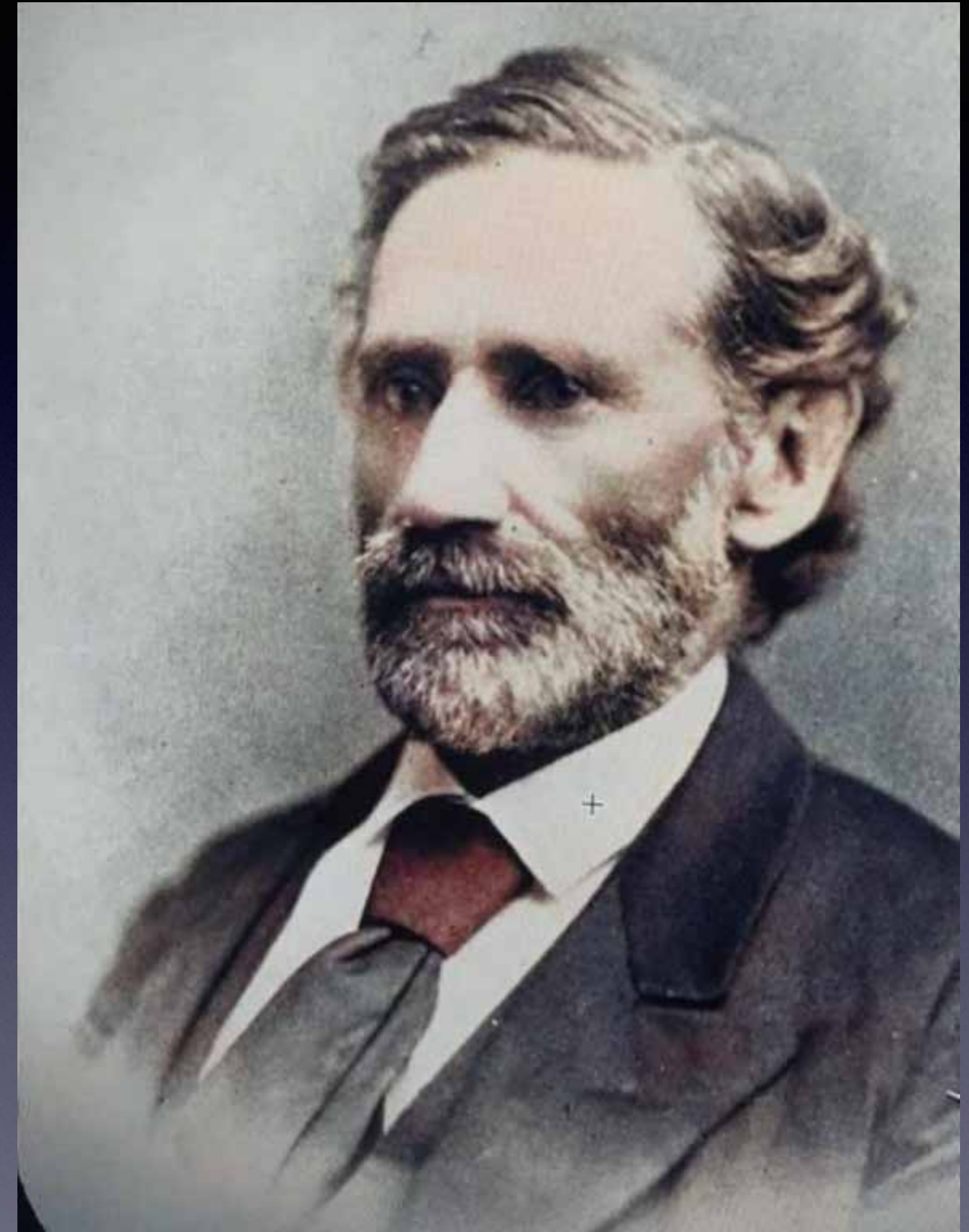
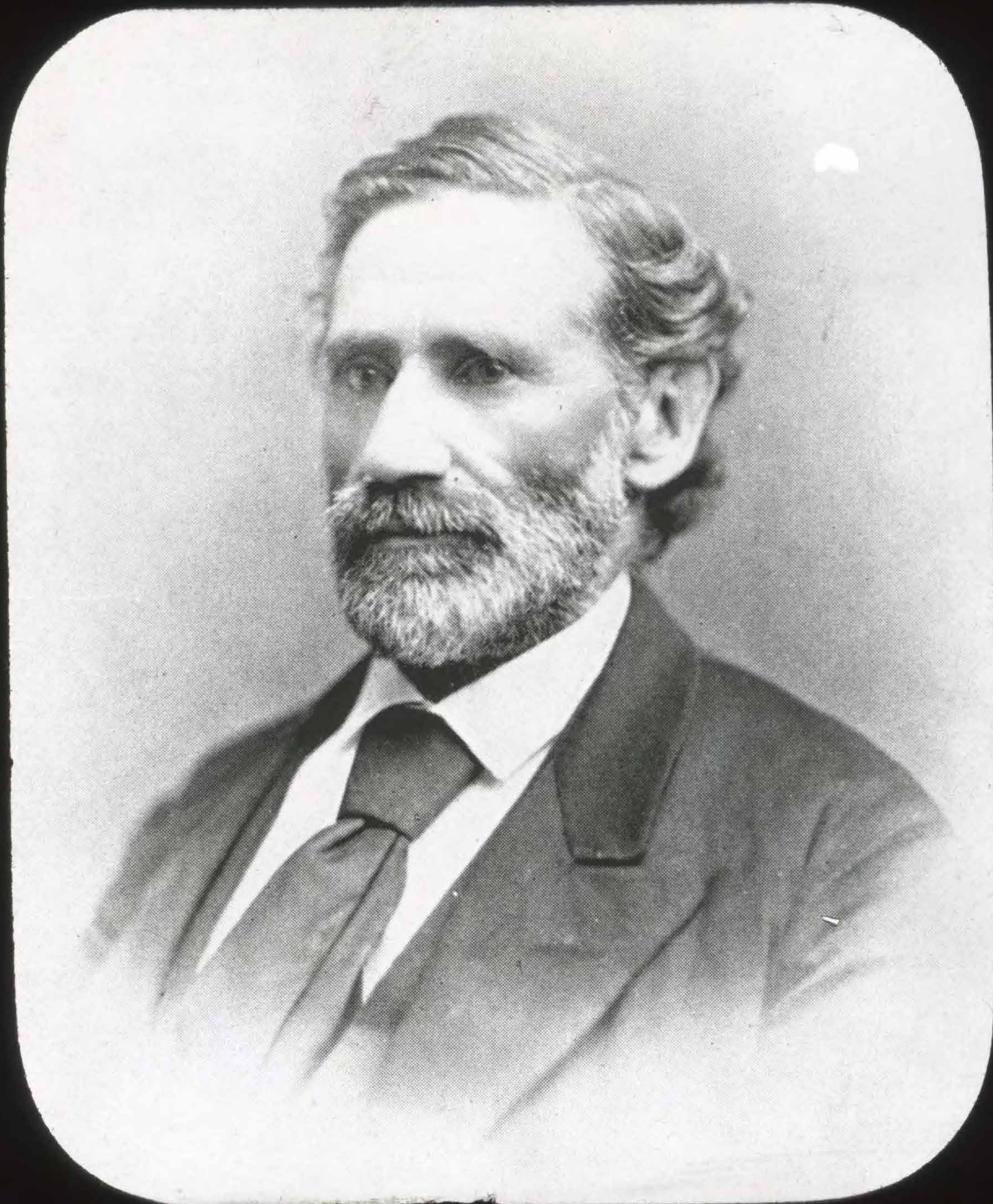
**A doctor looking
at bottle with
two nurses**

Possibly
Dr. Duncan or Dr. McLane

1998_012_052

Junius Harris Collection, Sacramento-El Dorado Medical Society

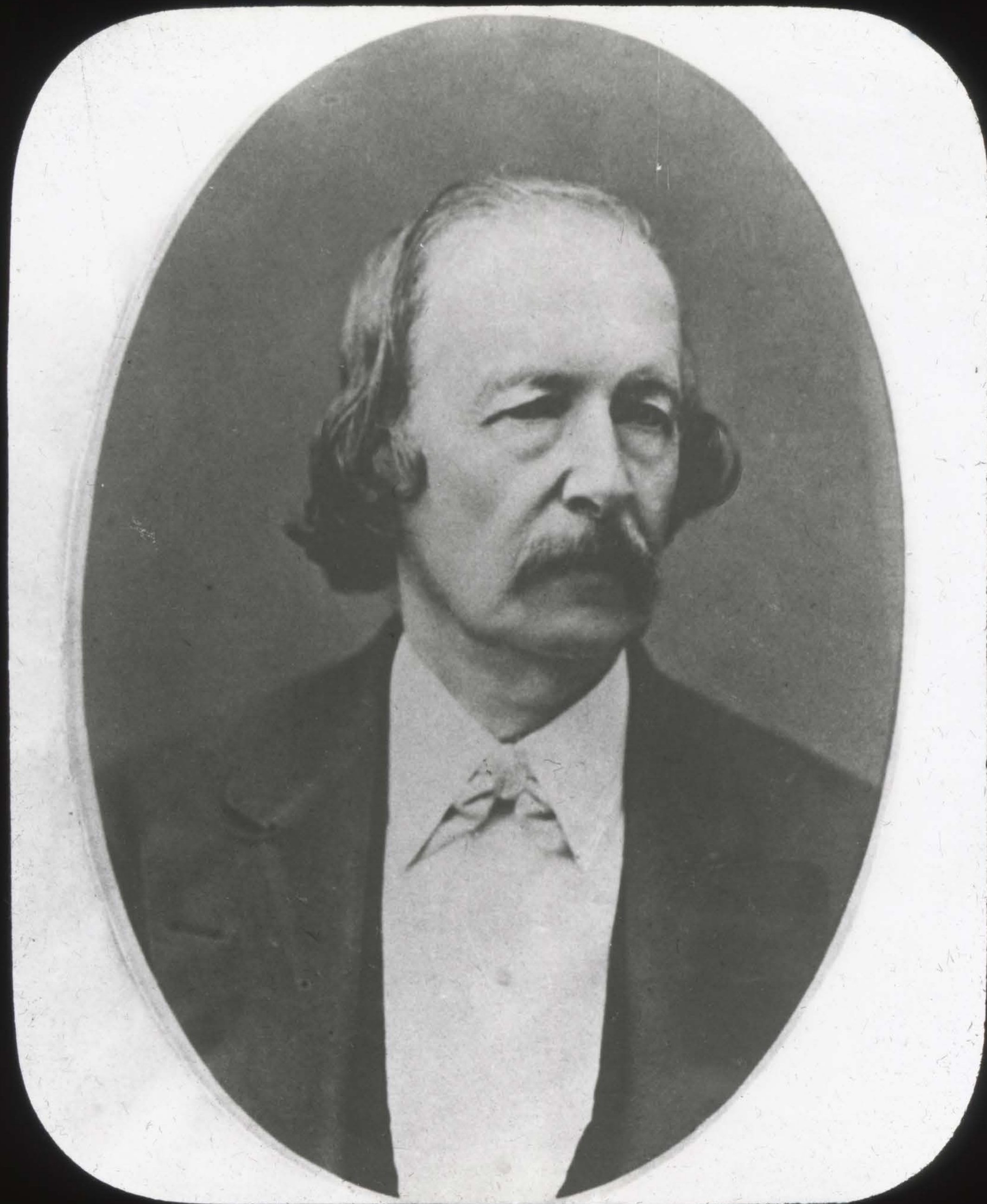
DR. JOHN MORSE



1998_012_062

Junius Harris Collection, Sacramento-El Dorado Medical Society

Dr. Morse was active in the Oddfellows and with the Masons established a hospital in Sutter's Fort in 1849. He was a strong advocate of correcting the filthy conditions of the streets and was the first to inaugurate a system of health insurance in California....for \$100 the subscriber was entitled to be attended free at the Oddfellows and Masons Hospital for one year. Dr. Morse was also the first editor of the Sacramento Daily Union, a member of the Board of Directors of Central Pacific Railroad, and an original staff member of Toland Medical College in San Francisco. In addition, he co-founded the first agricultural paper on the Pacific Coast, was a volunteer fireman, served as temporary chairman of the group which formed the California Medical Association, edited the California State Medical Journal and was vice president of the California Prison Commission. Dr. Morse was one of the founders of the Sacramento County Medical Society, a precursor to our current Medical Society.



DR. THOMAS LOGAN

1998_012_015

Junius Harris Collection, Sacramento-El Dorado Medical Society

While mining in 1850, Dr. Thomas Muldrup Logan heard about the cholera epidemic and returned to Sacramento to help, as he had conducted studies on cholera during his travels abroad. He became the most widely known physician in the West and contributed to numerous medical and public health organizations. He determined that communicable diseases, such as yellow fever, caused over half of the deaths in Sacramento. He also kept such accurate weather records that the National Weather Bureau accepted them when it formed decades later. In 1847, he participated in the founding of the American Medical Association and, in 1871, brought the first western meeting to San Francisco. The next year, the association elected him president.



**Operating Room
California Pacific
Railroad Hospital**

Physicians are:

Surgeon
T.W. Huntington

Assistant
G.W. Stevenson

Anesthesiologist
Stanley Reckers

1998_012_011

Junius Harris Collection, Sacramento-El Dorado Medical Society

Office of Dr. Fay

He had the
first X-ray
machine
in Sacramento.

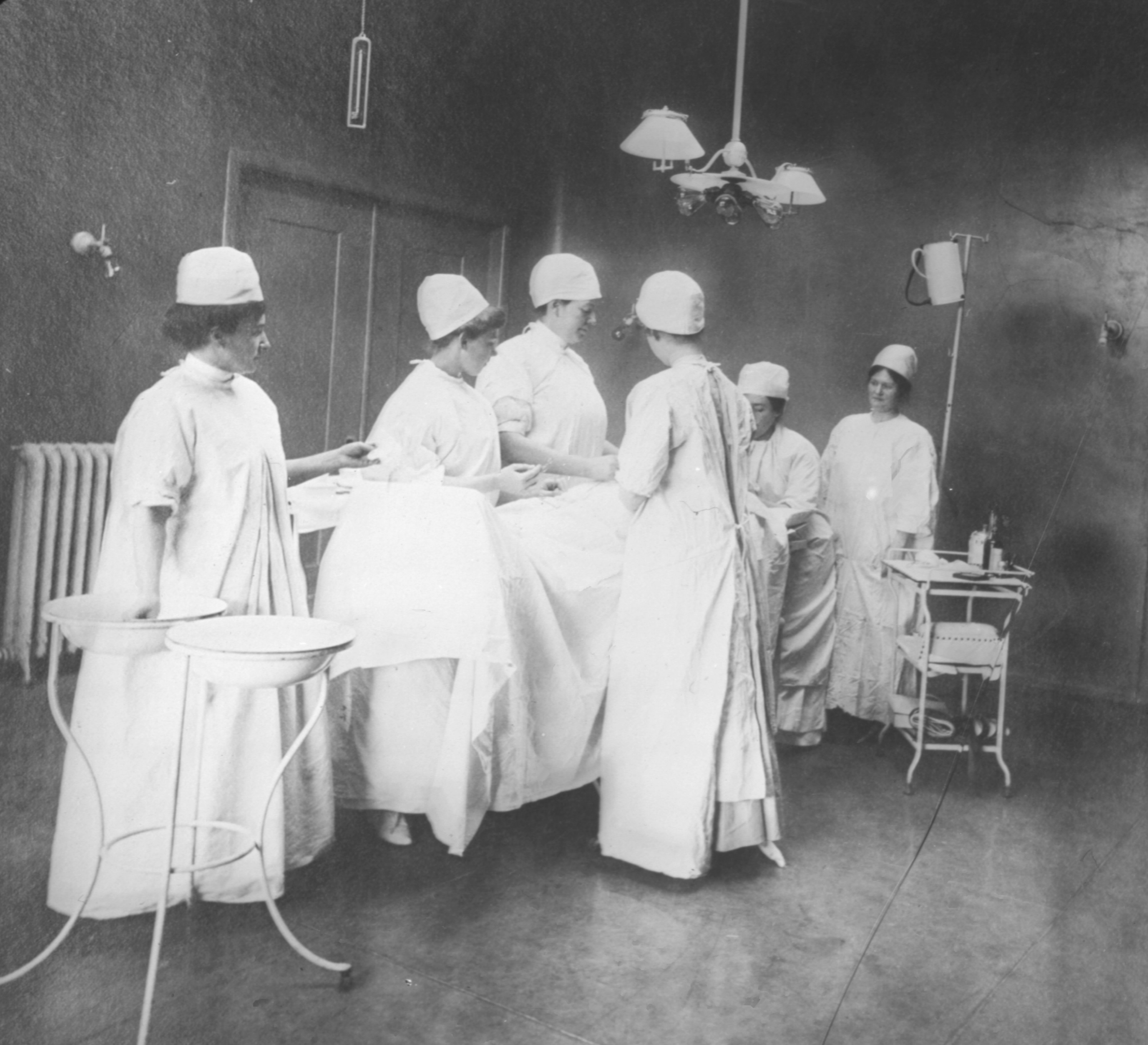
The generator
to power the tube
is at the right of
the photo
(purchased
in 1897)



1998_012_077

Junius Harris Collection

Sacramento-El Dorado Medical Society



Group of women around an operating table

There were few women physicians during this era, so it is possible that this was a “staged” photo.

1998_012_096

Junius Harris Collection, Sacramento-El Dorado Medical Society

BUILDINGS



**View of
Sacramento
with
Sacramento
River and
Broderick
in the
distance**

1998_012_058
Junius Harris Collection,
Sacramento-El Dorado Medical Society



PRATT BUILDING 2nd & K

Dr. Logan's office
was on the second
floor

GENERAL AREA HISTORY

EARLY DAY MINING CAMP



1998_012_001

**OX TEAM
and
LOGGING**

1998_012_003
Junius Harris Collection, Sacramento-El Dorado Medical Society

HOSPITALS



Probable
Dedication of Sister's
Hospital (forerunner
of Mercy Hospital)
with
Bishop Keane
and
Dr. Parkinson

1924

1998_012_067

Junius Harris Collection, Sacramento-El Dorado Medical Society



**Central Pacific
Railroad
Hospital**

(CPRR)

13th & C Streets

1998_012_006
Junius Harris Collection
Sacramento-El Dorado Medical Society

1998_012_007

Junius Harris Collection, Sacramento-El Dorado Medical Society



HOSPITAL
STAFF

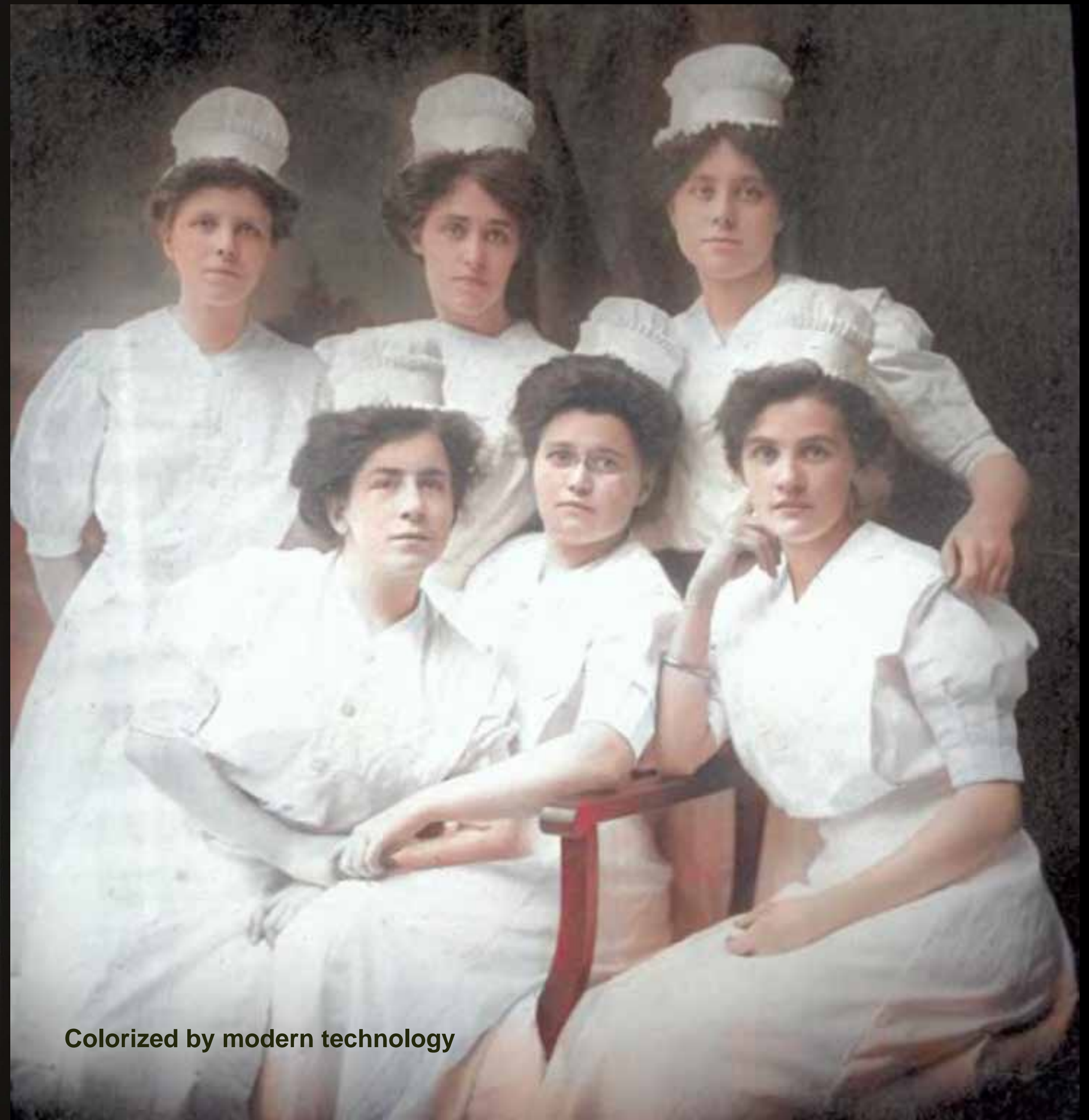
CPRR
HOSPITAL

NURSES of the White Hospital

Nurses from the privately owned White Hospital, founded in 1910 by the prominent physician and surgeon, Dr. John White. It included a school for nurses.

1998_012_032B

Junius Harris Collection, Sacramento-El Dorado Medical Society



Colorized by modern technology

Nurses at
White
Hospital



1998_012_034

Junius Harris Collection, Sacramento-El Dorado Medical Society



Nurses at
White Hospital

1998_012_037

Junius Harris Collection, Sacramento-El Dorado Medical Society



Nurses at
White Hospital

1998_012_035
Junius Harris Collection, Sacramento-El Dorado Medical Society



Nurses at
White Hospital

1998_012_036_

Junius Harris Collection, Sacramento-El Dorado Medical Society



Nurses at
White Hospital

1998_012_039
Junius Harris Collection, Sacramento-El Dorado Medical Society

NURSES



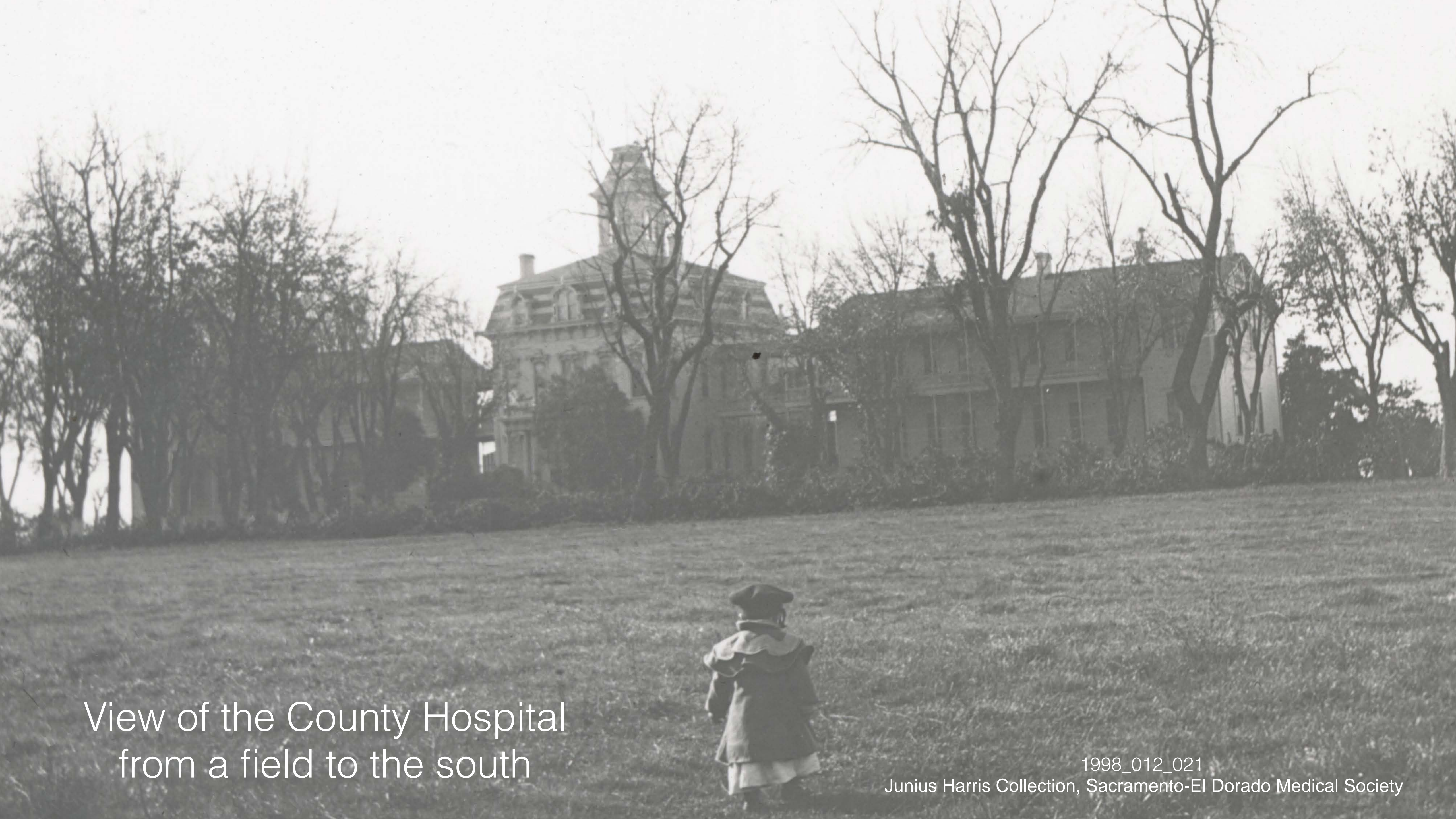
1998_012_031

Junius Harris Collection

Sacramento-El Dorado Medical Society

Nurses outside the Central Pacific Railroad Hospital

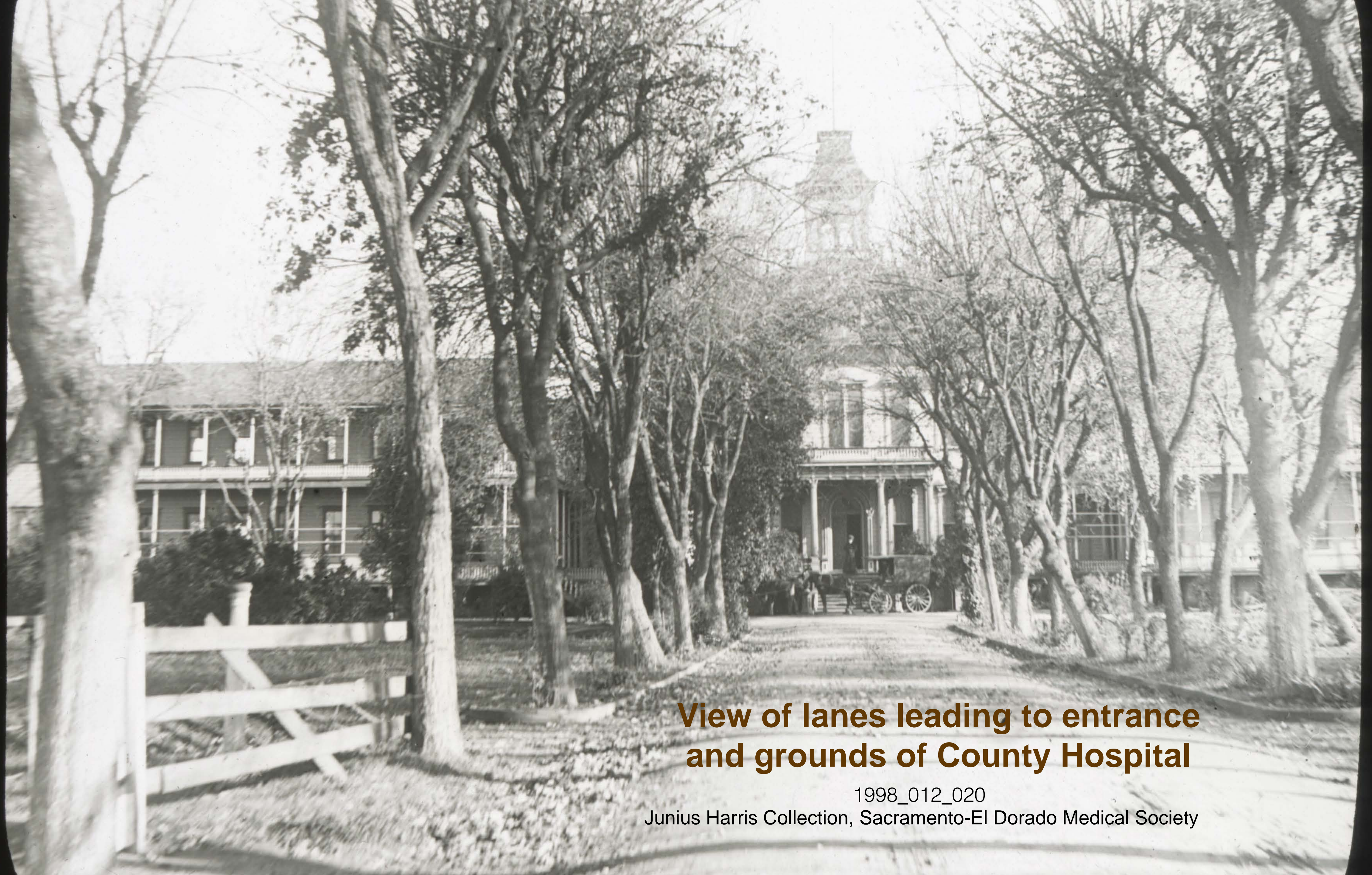
**SACRAMENTO
COUNTY
HOSPITAL**



View of the County Hospital
from a field to the south

1998_012_021

Junius Harris Collection, Sacramento-El Dorado Medical Society



**View of lanes leading to entrance
and grounds of County Hospital**

1998_012_020

Junius Harris Collection, Sacramento-El Dorado Medical Society



VERANDA

**Sacramento County
Hospital**

1998_012_023

Junius Harris Collection, Sacramento-El Dorado Medical Society



SACRAMENTO COUNTY HOSPITAL

1998_012_071

Junius Harris Collection, Sacramento-El Dorado Medical Society

STEWARD

**Sacramento County
Hospital**

1998_012_026

Junius Harris Collection, Sacramento-El Dorado Medical Society

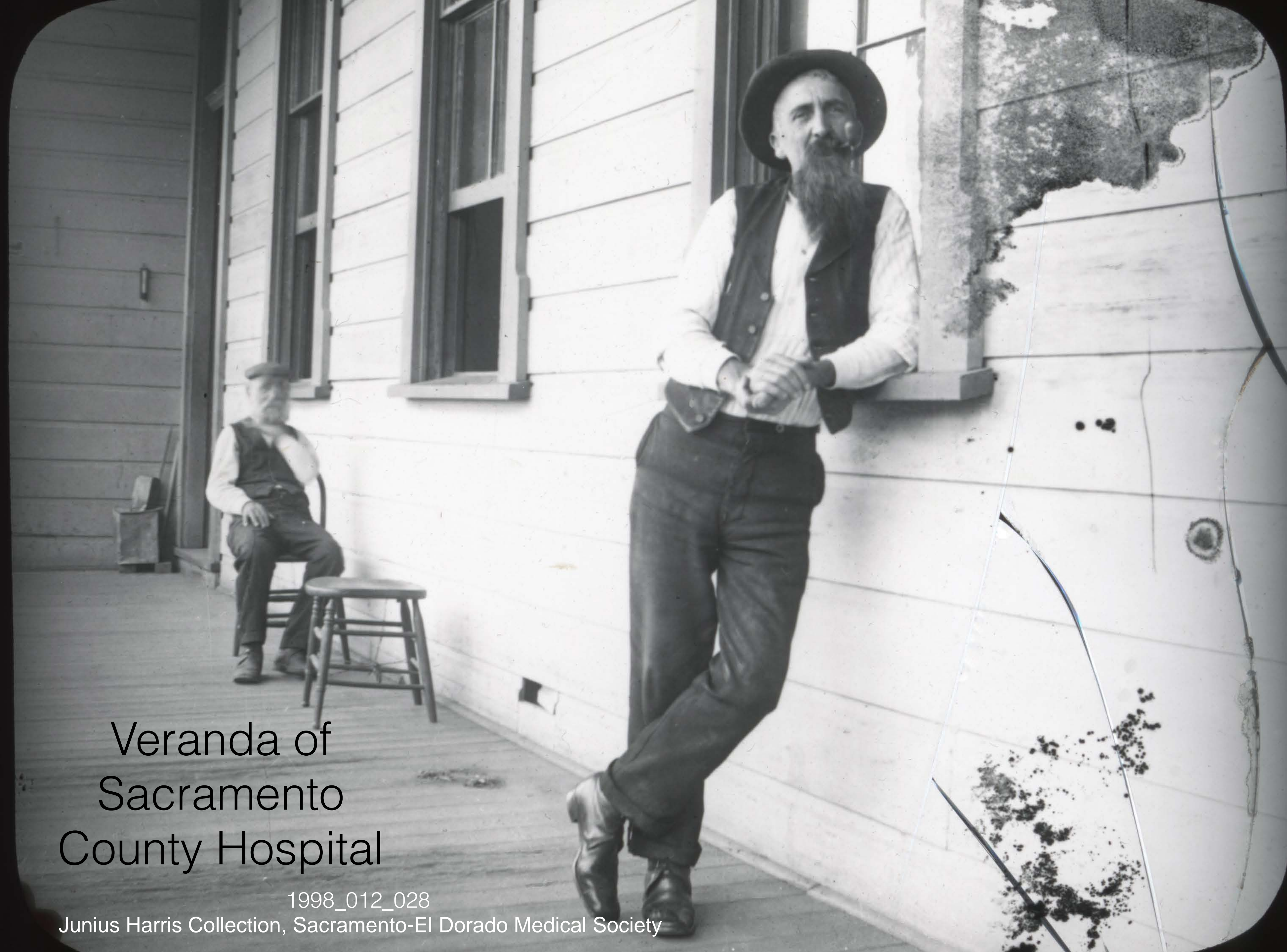


Veranda of Sacramento
County Hospital



1998_012_024

Junius Harris Collection, Sacramento-El Dorado Medical Society



Veranda of
Sacramento
County Hospital

1998_012_028

Junius Harris Collection, Sacramento-El Dorado Medical Society



POTTERS FIELD

Burial behind
Sacramento
County
Hospital

1998_012_029

Junius Harris Collection, Sacramento-El Dorado Medical Society



**Sacramento Society
for Medical
Improvement
(SSMI)
River Cruise**

“Dr. Nahl has jumped
over the side”

(SSMI was the
forerunner of our
current
Medical Society)

circa 1900

SACRAMENTO HISTORY

1998_012_068

Junius Harris Collection, Sacramento-El Dorado Medical Society



534.C.

1998_012_056

Junius Harris Collection, Sacramento-El Dorado Medical Society

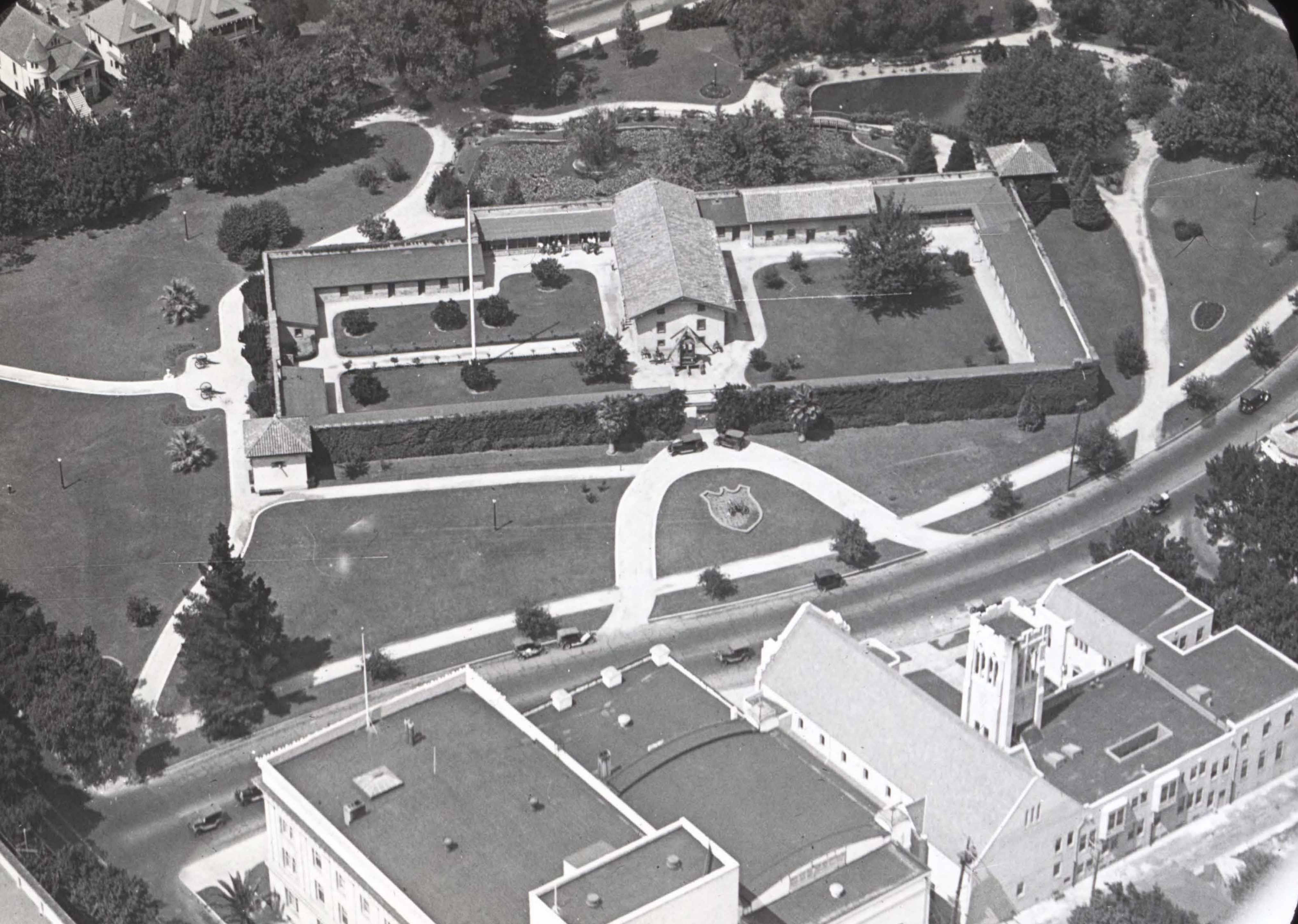


Sam
Brannan's
Store,
Eagle
Theater
and
City Hotel

1998_012_055

Junius Harris Collection, Sacramento-El Dorado Medical Society





SUTTER'S FORT

1998_012_087
Junius Harris Collection
Sacramento-El Dorado
Medical Society

PERSONALITIES

If you are able to help identify any of the persons or locations in any of the photographs please contact:

Dr. Bob LaPerriere
SSVMS Museum of Medical History
ssvmsmus@gmail.com



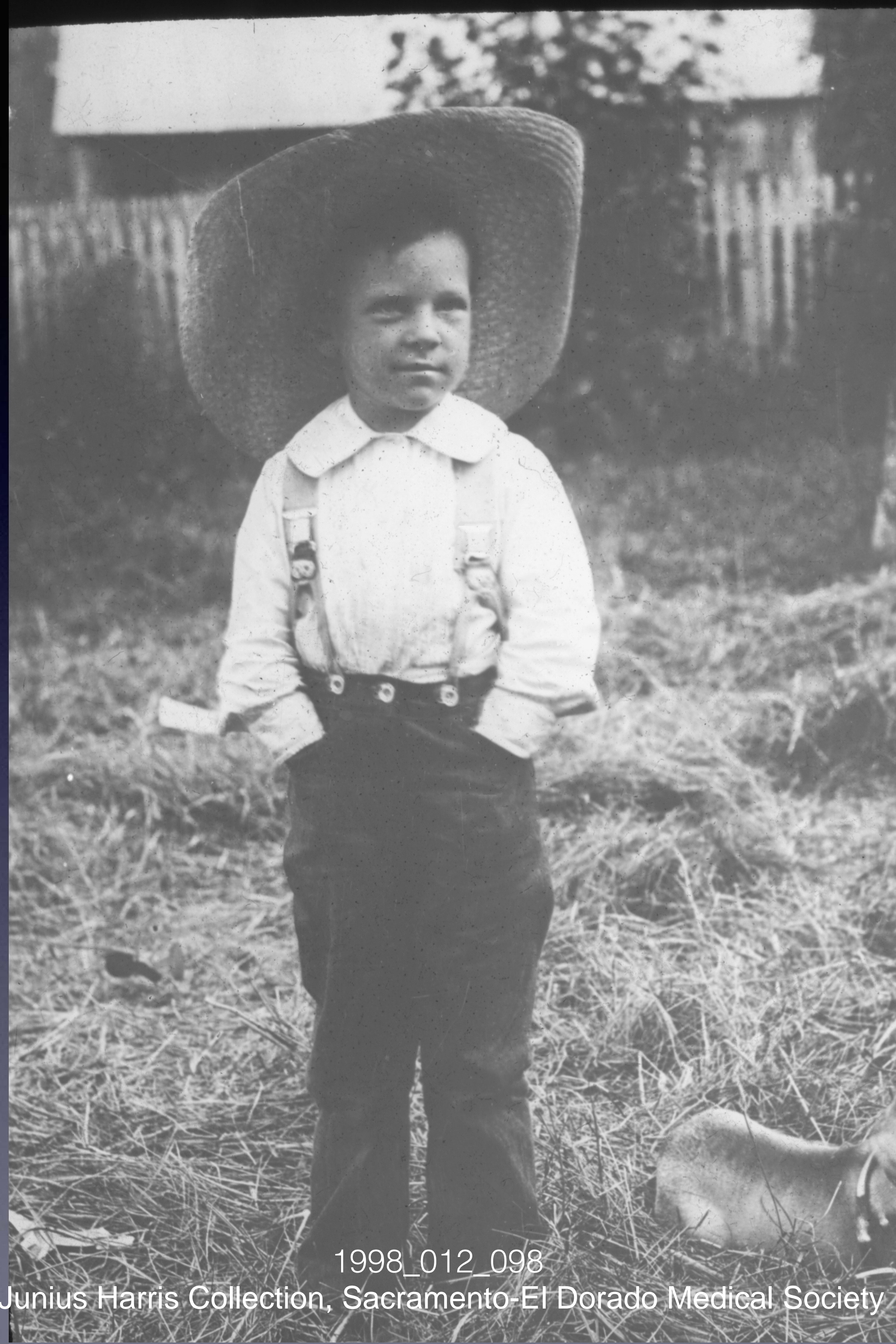
1998_012_061
Junius Harris Collection
Sacramento-El Dorado
Medical Society





1998_012_059
Junius Harris Collection
Sacramento-El Dorado
Medical Society





1998_012_098

Junius Harris Collection, Sacramento-El Dorado Medical Society



1998_012_099

Junius Harris Collection, Sacramento-El Dorado Medical Society

Yours Truly



1998_012_054

Junius Harris Collection, Sacramento-El Dorado Medical Society

1998_012_074

Junius Harris Collection, Sacramento-El Dorado Medical Society



1998_012_048

Junius Harris Collection
Sacramento-El Dorado Medical Society



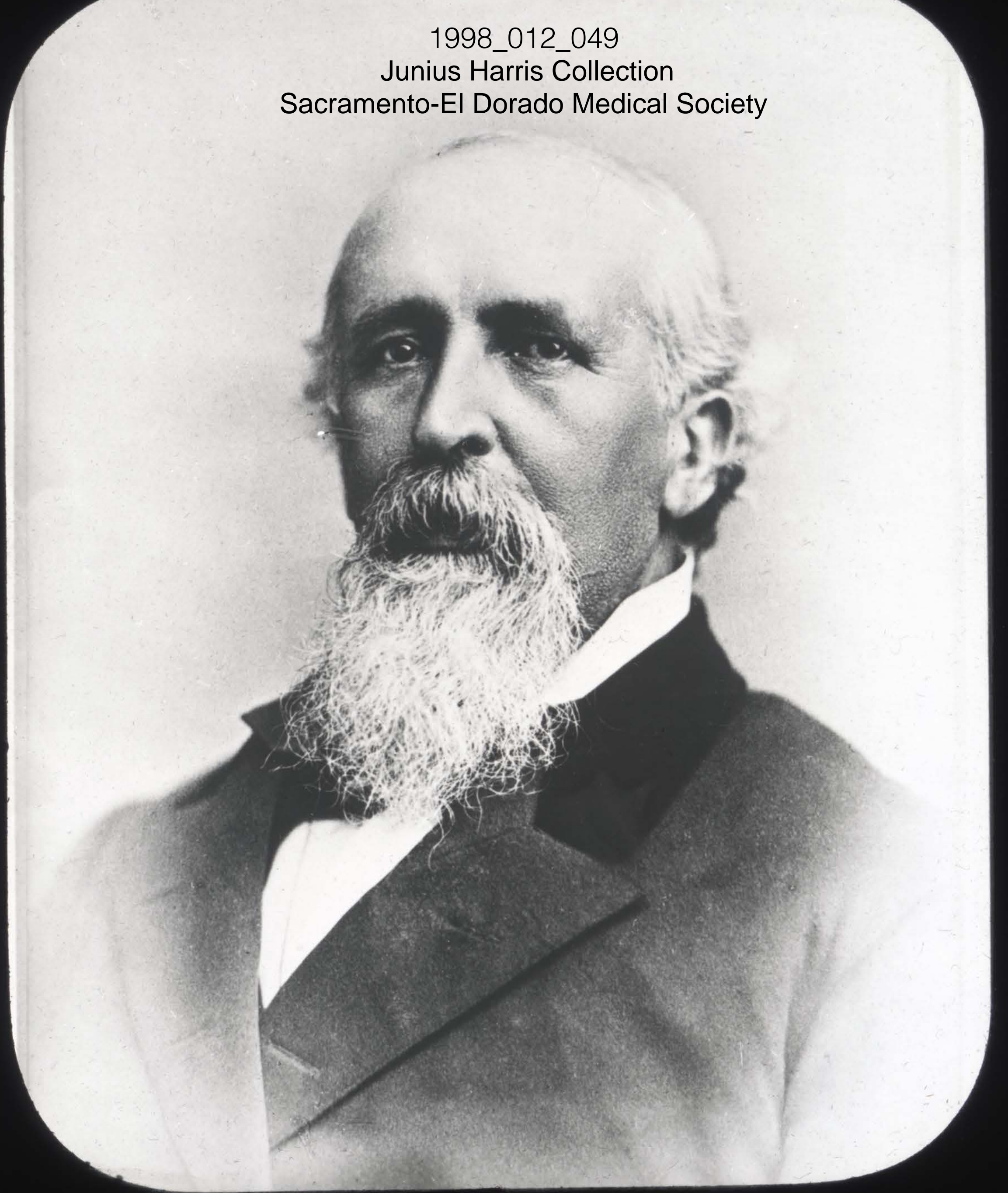
1998_012_043

Junius Harris Collection
Sacramento-El Dorado Medical Society





1998_012_027
Junius Harris Collection
Sacramento-El Dorado Medical Society



1998_012_049
Junius Harris Collection
Sacramento-El Dorado Medical Society

1998_012_066
Junius Harris Collection
Sacramento-El Dorado Medical Society



1998_012_080
Junius Harris Collection
Sacramento-El Dorado
Medical Society



1998_012_072
Junius Harris Collection
Sacramento-El Dorado Medical Society



1998_012_046
Junius Harris Collection
Sacramento-El Dorado Medical Society



We hope you have enjoyed this virtual trip through Sacramento
as it was a century or more ago.

Please let us know of any thoughts or comments you may have.

Dr. Bob LaPerriere
Curator

Sierra Sacramento Valley Medical Society Museum of Medical History
Sacramento, California

ssvms.org

ssvmsmus@gmail.com