



WELCOME

to Louisville, Kentucky

WHAT TO DO | PLACES TO EAT | SIGHTS TO SEE

WE LOVE OUR LOCAL NEIGHBORHOOD & YOU WILL TOO

TABLE OF CONTENTS

WELCOME **01**

LOCAL LIVING **02**

EMPLOYMENT **03**

ANNUAL EVENTS **04**

SCHOOL DISTRICTS **05**

HOSPITALS & HEALTH CLINICS **06**

THINGS TO DO **08**

SHOPPING & RESTAURANTS **10**

PARKS **11**

HOUSING **13**

ABOUT US **14**



WELCOME TO LOUISVILLE

Experience the unique energy of Louisville, KY, where Southern charm meets urban sophistication. Known for its rich history, vibrant arts scene, and the world-famous Kentucky Derby, Louisville offers something for everyone. Wander through historic neighborhoods, indulge in the city's diverse culinary offerings, and enjoy the lively entertainment and music venues. With beautiful parks, a thriving cultural scene, and friendly locals, Louisville is a city full of excitement and warm hospitality. Explore all that Louisville has to offer and create unforgettable memories in this dynamic city.



Hi, I'm Taylor Brianne Smith

YOUR LOCAL REALTOR

EXPLORE YOUR CITY WITH THE HELP OF THIS GUIDE

LOCAL LIVING

Living in Louisville means enjoying a blend of urban and Southern lifestyles. The city boasts charming neighborhoods, each with its own unique character, from the historic Victorian homes in Old Louisville to the bustling streets of the Highlands. Residents have access to excellent schools, healthcare facilities, and diverse dining options. The city's parks, such as Cherokee Park and Waterfront Park, offer plenty of outdoor activities. Louisville's strong sense of community, combined with its vibrant arts scene and local festivals, creates a welcoming and enriching environment for all who call it home.

CLIMATE

Louisville experiences a humid subtropical climate with four distinct seasons. Summers are hot and humid, with temperatures often reaching the high 80s and 90s (°F), while winters are generally mild, with temperatures ranging from the mid-30s to 40s (°F) and occasional snowfall. Spring and fall are particularly pleasant, featuring mild temperatures and colorful foliage, making these seasons ideal for outdoor activities. Rain is evenly distributed throughout the year, contributing to the lush greenery and vibrant local flora.

COST OF LIVING

Louisville offers a relatively affordable cost of living compared to other major cities in the U.S. Housing is particularly reasonable, with a variety of options ranging from downtown apartments to suburban homes. Utilities, transportation, and healthcare costs are also lower than the national average. Groceries and dining out are budget-friendly, allowing residents to enjoy the city's vibrant food scene without breaking the bank. Overall, Louisville provides a comfortable lifestyle with the charm of a smaller city and the amenities of a larger urban area.

Getting to know everything
ABOUT YOUR SMALL TOWN



EMPLOYMENT OPPORTUNITIES

Louisville boasts a diverse job market with opportunities across various sectors. Major industries include healthcare, manufacturing, logistics, and education. The city is home to several large employers such as UPS, Ford Motor Company, and Humana, which offer a range of positions from entry-level to executive roles. The University of Louisville and its affiliated hospital system provide numerous jobs in education and healthcare. Additionally, Louisville's growing tech sector and vibrant startup scene present opportunities for those in innovative fields. The city's strategic location and robust infrastructure also support a thriving logistics and distribution industry, making it an attractive place for job seekers.

Looking to start a new career?

FIND YOUR DREAM JOB IN YOUR NEW TOWN

JOBS AVAILABLE

- **Chamber of Commerce:** Contact for major businesses.
- **Directories:** Check for prominent companies.
- **Economic Offices:** Inquire about key businesses.
- **Local News:** Stay informed on significant businesses.
- **Networking:** Connect for business insights.

Explore major businesses in Louisville, KY through the Chamber of Commerce, business directories, economic offices, local news, and community networking.



ANNUAL EVENTS



KENTUCKY DERBY FESTIVAL

Held in the two weeks leading up to the Kentucky Derby, this festival includes a variety of events such as Thunder Over Louisville (one of the largest fireworks displays in the U.S.), the Pegasus Parade, and the Great Balloon Race. It's a celebration of Louisville's rich horse racing history and vibrant community spirit.



ST. JAMES COURT ART SHOW

This renowned art show takes place in early October in the historic Old Louisville neighborhood. It features over 700 artists from across the nation, showcasing a wide array of art forms, including painting, sculpture, and jewelry. The event attracts art enthusiasts and collectors from near and far.



FORECASTLE FESTIVAL

A major music festival held every July at Waterfront Park, Forecastle Festival brings together a diverse lineup of musical acts, environmental activism, and local food and crafts. The festival has become a summer staple, drawing music lovers from all over the country.



ABBHEY ROAD ON THE RIVER

Celebrating the music of The Beatles, this five-day festival takes place over Memorial Day weekend. It features tribute bands from around the world, playing the iconic music of The Beatles and other 60s and 70s rock legends. The festival also includes Beatles-themed activities and memorabilia.

LOCAL SCHOOL DISTRICTS

LOUISVILLE OFFERS TOP-TIER EDUCATION WITH DIVERSE OPTIONS. JEFFERSON COUNTY PUBLIC SCHOOLS (JCPS) IS THE LARGEST AND KNOWN FOR ITS INNOVATIVE PROGRAMS. OLDHAM COUNTY SCHOOLS ARE CELEBRATED FOR ACADEMIC EXCELLENCE. BULLITT COUNTY PUBLIC SCHOOLS FOCUS ON PERSONALIZED EDUCATION AND ADVANCED COURSES. ANCHORAGE INDEPENDENT SCHOOL DISTRICT IS NOTED FOR ITS CLOSE-KNIT COMMUNITY AND INDIVIDUALIZED INSTRUCTION.



1

JEFFERSON COUNTY PUBLIC SCHOOLS (JCPS)

The largest school district in Kentucky, JCPS serves a diverse student population with a wide range of programs, including magnet schools, gifted and talented programs, and specialized academies. The district is known for its commitment to equity, innovation, and preparing students for college and careers.

2

OLDHAM COUNTY SCHOOLS

Located just outside of Louisville, Oldham County Schools are known for their high academic standards and strong community involvement. The district consistently ranks among the top in the state for student achievement, offering robust programs in academics, arts, and athletics.

3

BULLITT COUNTY PUBLIC SCHOOLS

Bullitt County Public Schools provide a supportive learning environment with a focus on personalized education. The district offers a variety of programs to meet the needs of all students, including Advanced Placement courses, career and technical education, and special education services.

4

ANCHORAGE INDEPENDENT SCHOOL DISTRICT

A small but highly regarded district, Anchorage Independent School District is known for its close-knit community and strong emphasis on academic excellence. The district offers a comprehensive educational program with a focus on individualized instruction, enrichment opportunities, and fostering a lifelong love of learning.

LOCAL HEALTH CLINICS

1

FAMILY HEALTH CENTERS

Offering comprehensive primary care services, including pediatric and adult care, dental services, and behavioral health support.

2

NORTON HEALTHCARE

A leading provider with multiple locations offering specialized care in cardiology, oncology, and neurology.

3

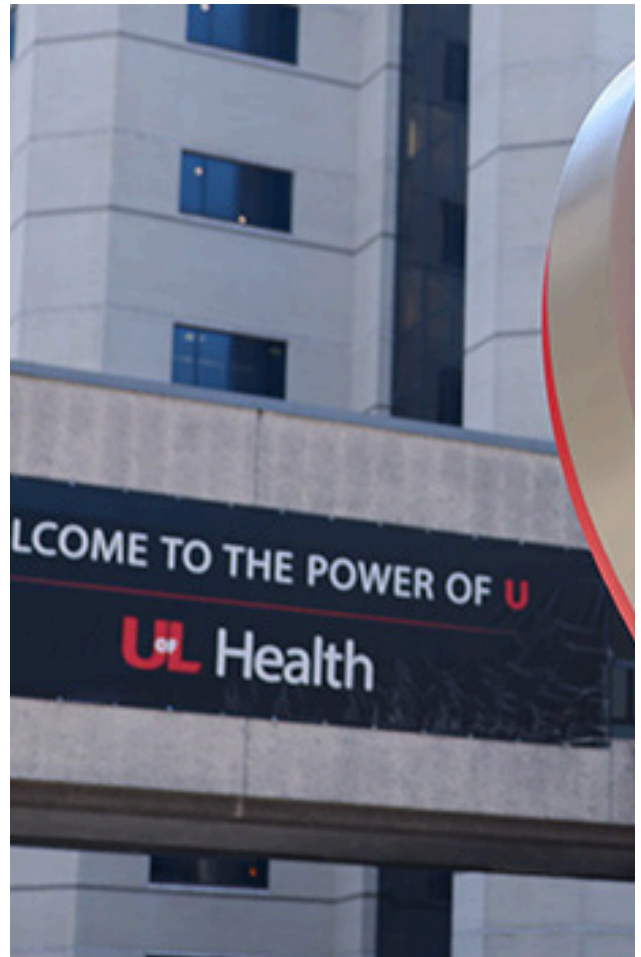
BAPTIST HEALTH MEDICAL GROUP

Provides a wide range of services, from primary care to specialized treatments, with a focus on patient-centered care.

4

UOFL HEALTH - MARY & ELIZABETH HOSPITAL

Offers a variety of outpatient services, including urgent care, diagnostic imaging, and women's health services.



HOSPITALS



ABOUT YOUR LOCAL HOSPITAL

Louisville is home to several top-tier hospitals providing exceptional healthcare services to residents and visitors alike. Norton Hospital is renowned for its comprehensive medical care and advanced treatment options. Baptist Health Louisville is a leading healthcare facility known for its patient-centered approach and state-of-the-art technology. UofL Health - Jewish Hospital is a key player in the medical community, offering specialized services and innovative treatments. Norton Women's & Children's Hospital focuses on women's and pediatric care, ensuring top-quality services for mothers and children. Lastly, Clark Memorial Health, located just across the river in Indiana, provides excellent healthcare services, further enhancing the medical resources available to the Louisville community. Together, these hospitals ensure that residents have access to world-class healthcare right in their city.

NORTON HOSPITAL

(502) 629-1234

BAPTIST HEALTH LOUISVILLE

(502) 897-8100

UOFL HEALTH - JEWISH HOSPITAL

(502) 587-4011

NORTON WOMEN'S & CHILDREN'S HOSPITAL (502) 893-1000

CLARK MEMORIAL HEALTH

(812) 282-6631

THINGS TO DO IN LOUISVILLE



LOUISVILLE SLUGGER MUSEUM & FACTORY

Discover the history of baseball's most famous bat, take a factory tour, and even get your own personalized bat.

CHURCHILL DOWNS AND KENTUCKY DERBY MUSEUM

Experience the excitement of horse racing at the iconic Churchill Downs, home of the Kentucky Derby, and explore the rich history of the event at the adjacent museum.



LOUISVILLE MEGA CAVERN

Explore this vast underground attraction that offers tram tours, zip lines, and an underground bike park, showcasing the city's unique geological features.

THINGS TO DO IN LOUISVILLE

MUHAMMAD ALI CENTER

Celebrate the life and legacy of the legendary boxer and humanitarian Muhammad Ali through interactive exhibits, memorabilia, and inspirational displays.



WATERFRONT PARK

Enjoy outdoor activities along the Ohio River with scenic walking paths, playgrounds, picnic areas, and stunning views of the Louisville skyline.

KENTUCKY SCIENCE CENTER

Engage with hands-on exhibits and interactive displays that make learning about science and technology fun for all ages.



Local spots worth visiting!

SHOPPING

Louisville offers a variety of shopping experiences, from malls to unique boutiques.

Mall St. Matthews and **Oxmoor Center** feature popular retailers like Nordstrom Rack, Apple, and Macy's.

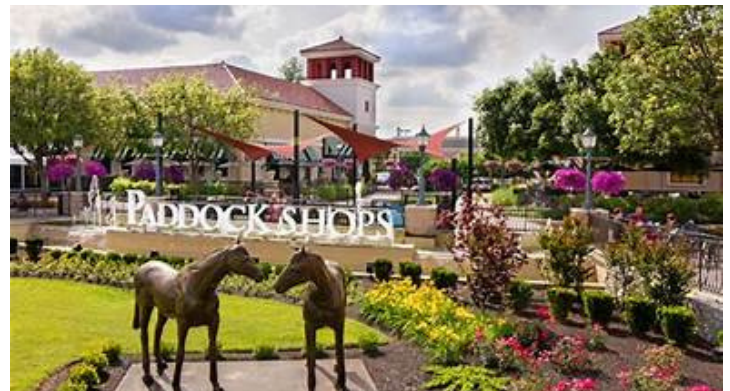


For local finds, head to **Bardstown Road** in the Highlands and **NuLu (East Market District)**, known for their eclectic shops and art galleries.

Westport Village and **Paddock Shops** provide charming outdoor shopping with a mix of national retailers and local boutiques.



Louisville's shopping districts cater to all tastes and preferences.

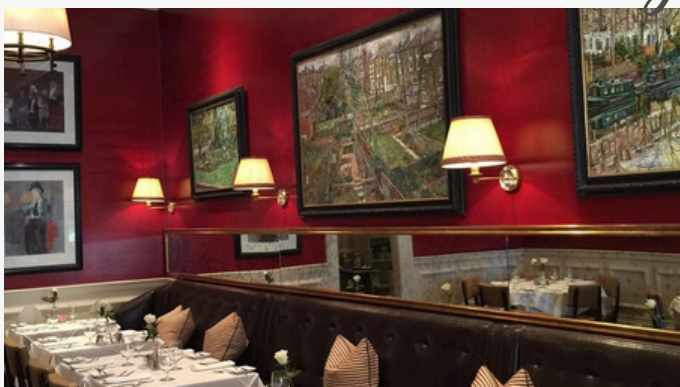


PLACES TO EAT

Louisville boasts a vibrant dining scene with a variety of culinary delights. Jack Fry's is celebrated for its Southern cuisine and historic charm, offering dishes like shrimp and grits in an intimate setting with live jazz music. Proof on Main, located in the 21c Museum Hotel, combines contemporary American fare with an artful atmosphere, featuring locally sourced ingredients in dishes such as bison burgers. For a taste of Yucatecan cuisine, Mayan Café presents farm-to-table dining with unique offerings like cochinita pibil. Lastly, Harvest emphasizes sustainability and local produce, serving seasonal dishes like buttermilk fried chicken in a cozy, rustic ambiance.

DISCOVER YOUR LOCAL FOOD

Find a new go-to restaurant



JACK FRY'S

Known for its Southern cuisine and historic ambiance, Jack Fry's offers a fine dining experience with a menu featuring dishes like shrimp and grits, and lamb chops. The intimate setting and live jazz music make it a favorite among locals.



PROOF ON MAIN

Located in the 21c Museum Hotel, Proof on Main combines contemporary American cuisine with an artful atmosphere. The menu features locally sourced ingredients with standout dishes such as bison burgers and charred octopus.



MAYAN CAFÉ

This farm-to-table restaurant specializes in Yucatecan cuisine. Mayan Café's unique menu includes dishes like cochinita pibil (slow-roasted pork) and tok-sel lima beans, highlighting authentic flavors with a modern twist.



HARVEST

Dedicated to showcasing the best of Kentucky's farms, Harvest offers a seasonal menu that emphasizes sustainability and local produce. Popular dishes include their buttermilk fried chicken and seasonal vegetable plates, all served in a cozy, rustic setting.

LOCAL PARKS



CHEROKEE PARK

A historic and scenic park designed by Frederick Law Olmsted, featuring rolling hills, wooded trails, and the scenic Hogan's Fountain Pavilion. Popular for hiking, picnicking, and enjoying nature.



WATERFRONT PARK

Located along the Ohio River, this urban park offers beautiful walking paths, playgrounds, and event spaces. It's a hub for festivals and provides stunning river views.



IROQUOIS PARK

Another Olmsted-designed park, known for its expansive woodlands, open spaces, and the scenic overlook providing panoramic views of the city. Ideal for hiking, biking, and outdoor concerts.

HAVE SOME FAMILY FUN

Louisville is home to a diverse range of parks that cater to all interests and activities. From the historic and scenic Cherokee Park with its rolling hills and wooded trails, to the urban beauty of Waterfront Park along the Ohio River, offering walking paths and playgrounds, there's something for everyone. Iroquois Park, another gem designed by Frederick Law Olmsted, boasts expansive woodlands and panoramic city views. These parks provide residents and visitors with ample opportunities for hiking, biking, picnicking, and enjoying outdoor events, enhancing the quality of life in Louisville.

TAKE A TRIP & VISIT ONE OF YOUR *Local Parks*

HOUSING OPTIONS

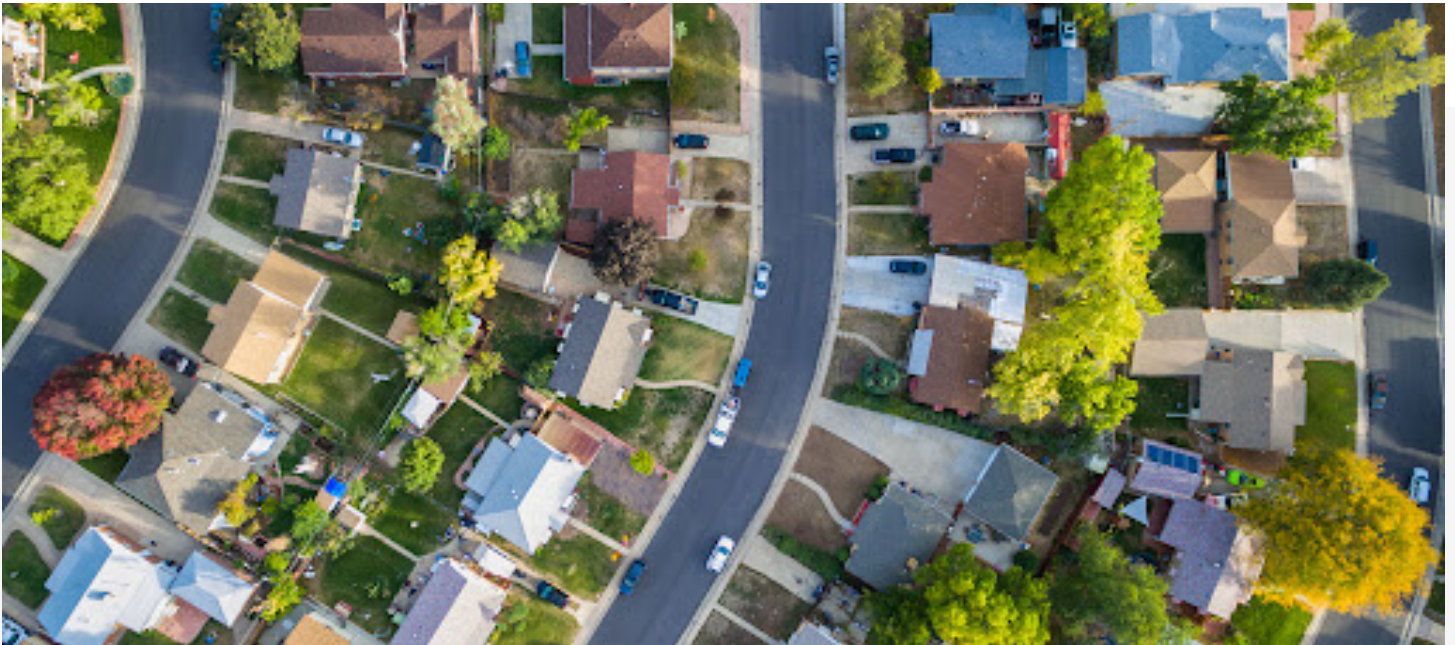
Louisville offers a diverse range of housing options to suit various lifestyles and budgets. From historic homes in charming neighborhoods to modern apartments downtown, there's something for everyone. Popular neighborhoods like the Highlands and Crescent Hill feature beautiful older homes with unique architectural styles, while areas like Norton Commons offer new, planned communities with modern amenities. The downtown and NuLu districts provide urban living with lofts and condos close to restaurants, shops, and entertainment. For those seeking more space, the suburbs of Middletown and Jeffersontown offer spacious single-family homes in family-friendly environments. Whether you prefer the hustle and bustle of city life or the tranquility of suburban living, Louisville has a housing option to meet your needs.

Finding your Home!

I'm here to assist you in any way I can. Whether you need information, guidance, or a friendly conversation, feel free to ask. My goal is to make your experience positive and helpful, so don't hesitate to let me know how I can be of service to you.

NEW BUILDS

- ~Norton Commons
- ~Beech Spring Farm
- ~Catalpa Farms
- ~Rock Springs
- & more!



TYPES OF HOUSING OPTIONS AVAILABLE TO YOU

Townhomes • New Builds • Single Family
Homes • Apartments

WHO WE ARE



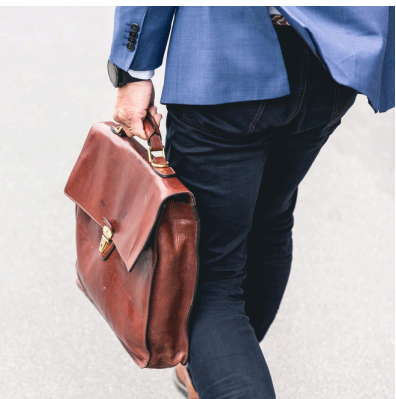
COURTESY

We are better equipped to help support our clients with compassion, mindfulness, and collective motivation to reach our common goals. In all things, we aim to be kind, welcoming, and open-minded, especially when facing challenges.



DEVOTED

Simply said, we like what we do, and this makes the difference between providing a service and providing an experience. We are fully dedicated to each task, delivering well-rounded solutions that don't lack in results. We go over and above for you as it is the proper thing to do, but also because we care about our clients. We sincerely love building our relationships and connections.



PROFESSIONAL

We take pleasure in having a team of skilled specialists that exhibit professionalism, both with our clients and among our peers. Our dedication to the highest quality service, efficiency, and insight are unparalleled.

Real estate is our passion

HELPING MY CLIENTS ACHIEVE THEIR HOME GOALS

ABOUT TAYLOR

Hi there! I'm Taylor Brianne Smith, your local Tennessee & Kentucky real estate expert. As a proud mom of a three-year-old, my passion extends beyond finding dream homes to creating lasting memories.



Choosing me means gaining a skilled negotiator, a creative marketer, and a dedicated communicator, all working together to make your real estate journey smooth and rewarding.

01 LOCAL EXPERTISE

With a deep understanding of both the Tennessee and Kentucky real estate markets, I bring valuable insights into local neighborhoods, market trends, and hidden gems.

Whether you're a first-time homebuyer, relocating, or investing, my local expertise ensures you make informed decisions that align with your goals.

02 NEGOTIATION

With a proven track record in negotiation, I advocate fiercely for your interests. Whether it's securing the best price for your home or navigating a competitive offer, my strategic negotiation skills ensure you get the most favorable terms possible.

Your satisfaction and financial well-being are my top priorities.

03 COMMUNICATION

Communication is at the heart of my service. I prioritize transparent and timely updates, keeping you informed throughout the entire real estate process. Whether you prefer phone calls, emails, or in-person meetings, I adapt to your communication style to ensure a stress-free and well-informed experience.





Taylor Brienne Smith

REAL ESTATE AGENT - **KY/TN** - ABR, MRP, PSA

📞 (615) 423-8915

✉️ TayBriSellsTN@gmail.com

📍 Middle Tennessee & Southern Kentucky

🌐 TayBriSellsKYTN.com

@TAYBRISSELLSTN