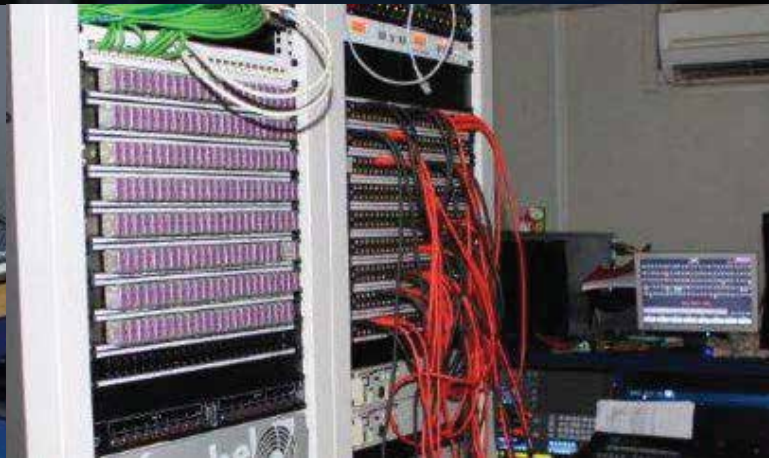




SYSTEM
INTEGRATION

Drama & Sports Broadcast Studios



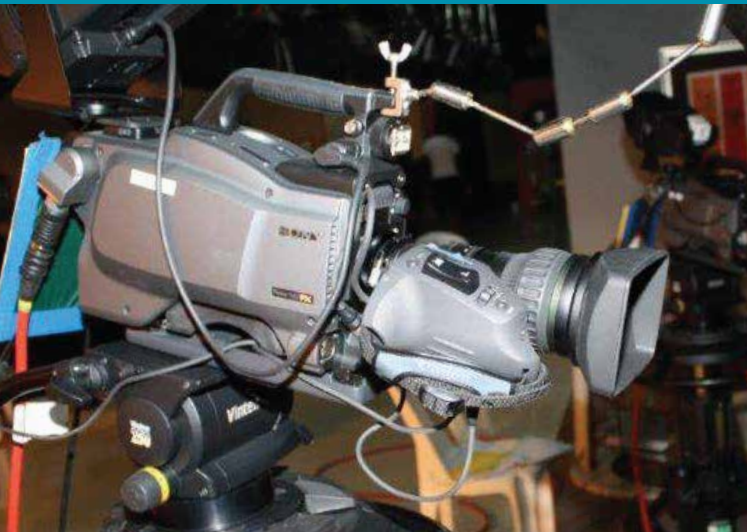
C2S MEDIA
CONCEPT 2 SOLUTION

www.c2s-media.com

THE BRIEF

SuperSport's new Nigerian operation was set-up to increase coverage of Nigerian Sports. They needed a new studio complex and asked the systems integration team at C2S to design, build and install it for them.

SuperSport needed an eight-camera HD studio facility with two studio floors working to a single gallery. In addition, a central control room for incoming feeds and transmission was required, along with a central edit system of three Avid non-linear edit suites and a central production server for creating highlights packages. The central system needed capacity for two additional studios to be added later on.



Broadcast Studios / SuperSport & MNET, Nigeria

SPECIFICATION

STUDIOS

- HD infrastructure, with multi-definition Snell IQ modular video processing and Pyxis HD and analogue audio router
- Sony HXC-100 HD triax cameras
- Sony MVS-6000 vision mixer
- Yamaha M7CL digital audio mixer
- Multiple VTR formats for packages to house standard XDCAM HD using PDW-HD1500 machines linked directly to post-production systems
- Evertz VIP multiviewers for main production stack, Ikegami HD CRT for HQ monitoring
- Custom-designed technical furniture
- Editshare Geevs production server with dedicated sports production software and control

CENTRAL AREA

- Multi-definition Snell IQ modular video processing and Sirius 288x288 3G router with multiple direct fibre interfaces for connection to distant parts of the facility
- Central control room for all engineering and transmission operations
- Telex Cronus intercom system using fibre interconnectivity to other areas within the facility
- Multi-format VTR capability
- Easily upgradable CAR area with capacity for a complete second studio in future
- Editshare central storage and archiving solution



C2S MEDIA
CONCEPT 2 SOLUTION

www.c2s-media.com