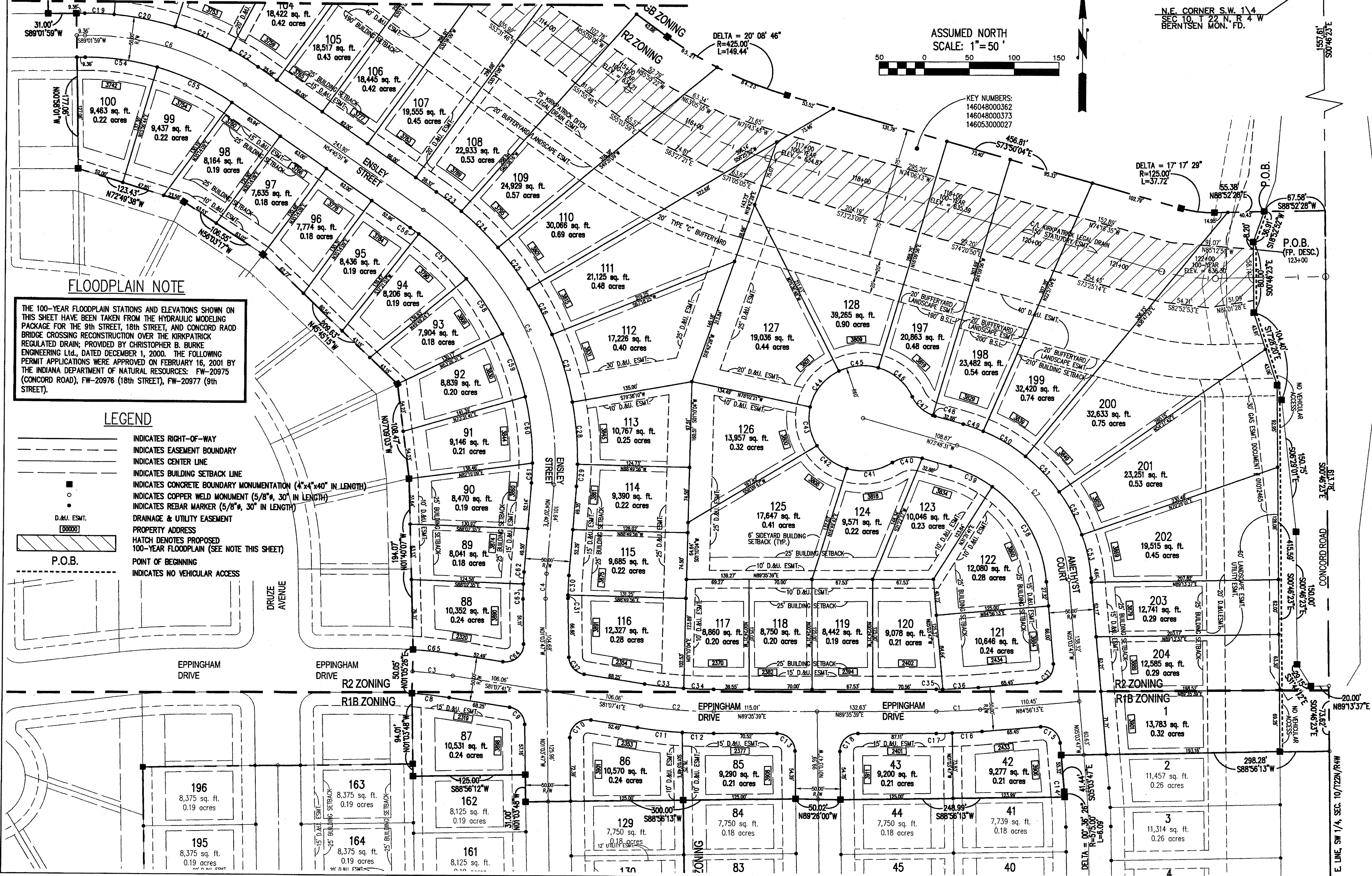


FINAL PLAT FOR STONES CROSSING SUBDIVISION

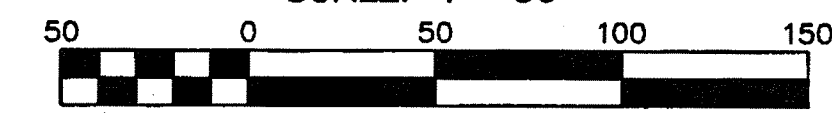
TIPPECANOE COUNTY, INDIANA

SECTION THREE

SEE SHEET 2 FOR CONTINUATION



ASSUMED NORTH
SCALE: 1" = 50'



KEY NUMBERS:
14604800362
14604800373
14605300027

FLOODPLAIN NOTE

THE 100-YEAR FLOODPLAIN STATIONS AND ELEVATIONS SHOWN ON THIS SHEET HAVE BEEN TAKEN FROM THE HYDRAULIC MODELING PACKAGE FOR THE 9th STREET, 18th STREET, AND CONCORD ROAD BRIDGE CROSSING RECONSTRUCTION OVER THE KIRKPATRICK REGULATED DRAIN; PROVIDED BY CHRISTOPHER B. BURKE ENGINEERING LTD., DATED DECEMBER 1, 2000. THE FOLLOWING PERMIT APPLICATIONS WERE APPROVED ON FEBRUARY 16, 2001 BY THE INDIANA DEPARTMENT OF NATURAL RESOURCES: FW-20975 (CONCORD ROAD), FW-20976 (18th STREET), FW-20977 (9th STREET).

- LEGEND**
- INDICATES RIGHT-OF-WAY
 - INDICATES EASEMENT BOUNDARY
 - INDICATES CENTER LINE
 - INDICATES BUILDING SETBACK LINE
 - INDICATES CONCRETE BOUNDARY MONUMENTATION (4" x 4" x 40" IN LENGTH)
 - INDICATES COPPER WELD MONUMENT (5/8" x 30" IN LENGTH)
 - INDICATES REBAR MARKER (5/8" x 30" IN LENGTH)
 - DRAINAGE & UTILITY EASEMENT
 - PROPERTY ADDRESS
 - HATCH DENOTES PROPOSED 100-YEAR FLOODPLAIN (SEE NOTE THIS SHEET)
 - POINT OF BEGINNING
 - INDICATES NO VEHICULAR ACCESS

ROGER WARD ENGINEERING INCORPORATED
CIVIL ENGINEERS - LAND SURVEYORS - DEVELOPMENT CONSULTANTS
6285 N. COLLEGE AVENUE SUITE 2
INDIANAPOLIS, INDIANA 46220
(317) 281-1758 (FAX) 281-1923
www.rw-engineering.com

FINAL PLAT

DRAWN BY: EAG
DATE: 11/10/03
FILE NAME: G01700/MS/FP01
REV: N/A, ILLUSTRATED

REVISIONS:
1-
2-
3-

G&L DEVELOPMENT
STONES CROSSING SUBDIVISION
SECTION THREE
CONCORD ROAD & C.R. 350 SOUTH
TIPPECANOE COUNTY, INDIANA

SHEET
2
OF
2

JOB#: GLD.001

