

EVIO Labs Medford (pka Kenevir Research)
540 East Vilas Road, Suite F, Central Point, OR 97502
541-668-7444 / OLCC 010-1001626980D / www.EVIO Labs.com

CBG 1

AG-R1051022I

Confident Cannabis ID: 1910KR0258.5158

Sample ID: M191599-06

Matrix: Hemp

METRC Batch #:

Sampling Method/SOP: SOP.T.20.010

Date Sampled: 10/21/19 09:00

Date Accepted: 10/21/19

Harvest/Process Lot ID:



Batch ID:

Batch Size (g):

Unit for Sale:

Harvest/Production Date:

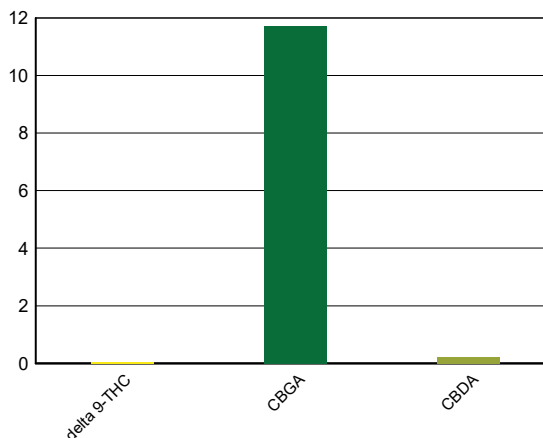
Cannabinoid Analysis

Date/Time Extracted: 10/25/19 12:25

Date/Time Analyzed: 10/26/19 05:56

Analysis Method/SOP: SOP.T.40.020

Cannabinoids	LOQ(%)	mg/g	% weight	Cannabinoid Profile
Total THC ((THCA*0.877)+Δ9THC)		<LOQ	<LOQ	
Total CBD ((CBDA*0.877)+CBD)		2.00	0.200	
THCA	0.100	< LOQ	< LOQ	
delta 9-THC	0.100	< LOQ	< LOQ	
CBGA	0.100	117.00	11.7	
CBDA	0.100	2.28	0.228	
CBD	0.100	< LOQ	< LOQ	
CBDV	0.100	< LOQ	< LOQ	
CBN	0.100	< LOQ	< LOQ	
CBG	0.100	< LOQ	< LOQ	
CBC	0.100	< LOQ	< LOQ	
CBDV-A	0.100	< LOQ	< LOQ	
Sum of tested Cannabinoids	0.100	119.00	11.9	



"Total THC" and "Total CBD" are calculated values and are an Oregon reporting requirement (OAR 333-064-0100). For Cannabinoid analysis, only delta 9-THC, THCA, CBD, CBDA are ORELAP accredited analytes. Cannabinoid values reported for plant matter are dry weight corrected; Oregon Water Activity action level is 0.65Aw and Oregon Moisture Content action level is 15%. Samples above limit will be highlighted RED; FD = Field Duplicate; LOQ = Limit of Quantitation.

Stephanie Moon
Laboratory Director - 10/28/2019

Page 1 of 2

EVIO Labs Medford (pka Kenevir Research)
 540 East Vilas Road, Suite F, Central Point, OR 97502
 541-668-7444 / OLCC 010-1001626980D / www.EVIOLabs.com

Quality Control

Batch: M19J183 - ODA Exhibit B/ SOP.T.30.050 Prep for Cannabinoids

Blank(M19J183-BLK1)				Extracted: 10/25/19 12:25		Analyzed: 10/26/19 02:10	
Analyte	Result	LOQ	Recovery Limits	Analyte	Result	LOQ	Recovery Limits
THCA	< LOQ	0.100 (%)	< LOQ	delta 9-THC	< LOQ	0.100 (%)	< LOQ
CBDA	< LOQ	0.100 (%)	< LOQ	CBD	< LOQ	0.100 (%)	< LOQ
CBDV-A	< LOQ	0.100 (%)	< LOQ	CBDV	< LOQ	0.100 (%)	< LOQ
CBG	< LOQ	0.100 (%)	< LOQ	CBGA	< LOQ	0.100 (%)	< LOQ
CBN	< LOQ	0.100 (%)	< LOQ	CBC	< LOQ	0.100 (%)	< LOQ
Sum of tested Cannabinoid:	< LOQ	0.100 (%)	< LOQ				

LCS(M19J183-BS1)				Extracted: 10/25/19 12:25		Analyzed: 10/26/19 02:23	
Analyte	% Recovery	LOQ	Recovery Limits	Analyte	% Recovery	LOQ	Recovery Limits
THCA	92.5	(%)	70-130	delta 9-THC	108	(%)	70-130
CBDA	95.3	(%)	70-130	CBD	109	(%)	70-130



Stephanie Moon
 Laboratory Director - 10/28/2019