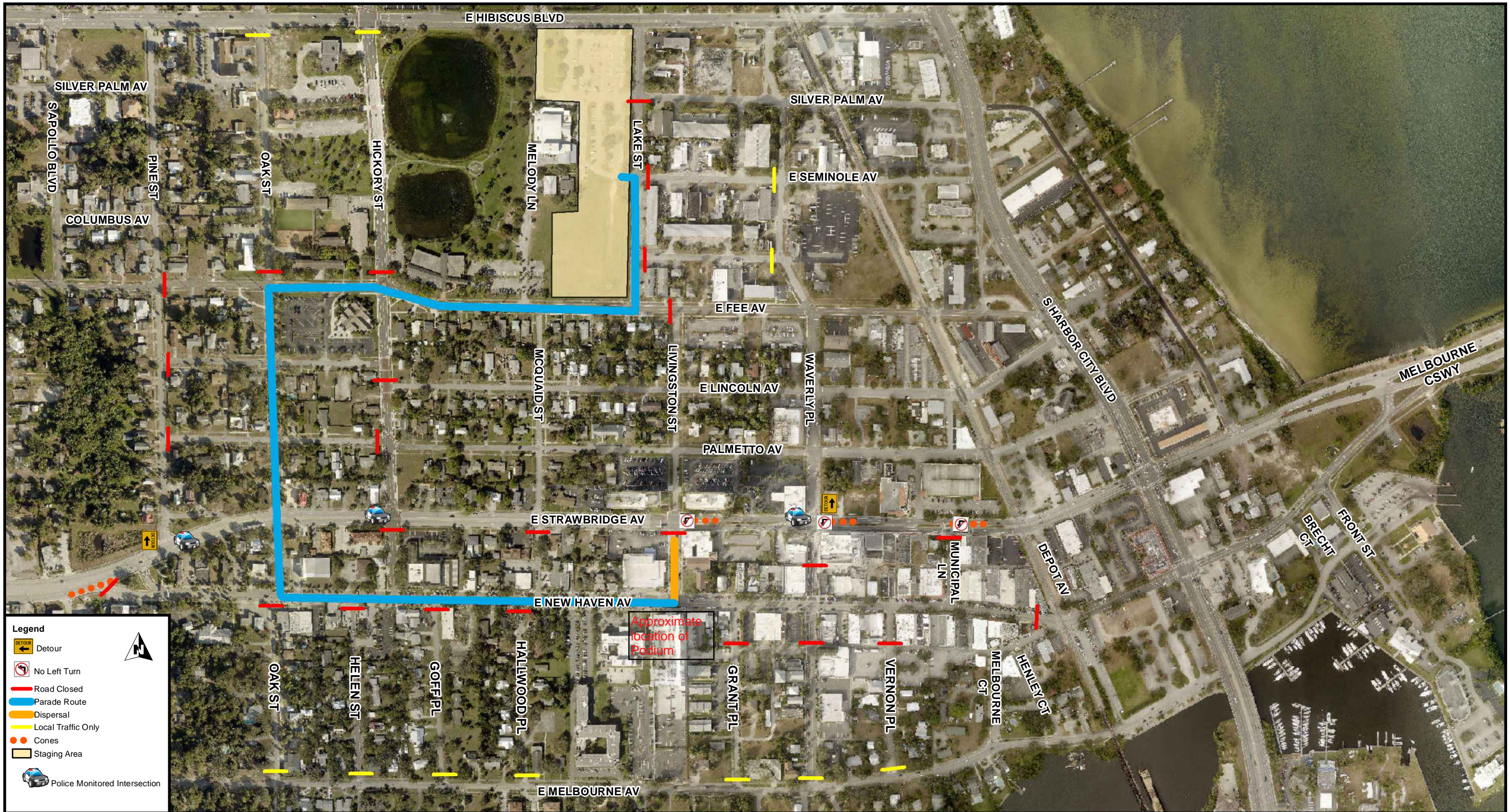



ST PATRICK'S DAY PARADE



Legend

-  Detour
-  No Left Turn
-  Road Closed
-  Parade Route
-  Dispersal
-  Local Traffic Only
-  Cones
-  Staging Area
-  Police Monitored Intersection

- GENERAL NOTES:**
1. ALL POINTS OF CLOSURE SHALL UTILIZE A MINIMUM OF ONE (1) TYPE III BARRICADE AND ONE (1) R11-2 ROAD CLOSED SIGN.
 2. BARRICADE PLACEMENT IS APPROXIMATE AND MAY BE ADJUSTED TO ACCOMMODATE FIELD CONDITIONS AS DETERMINED BY SIGNAGE SERVICES PERSONNEL.
 3. ALL SIGNS & DEVICES SHALL CONFORM TO FDOT STANDARD PLANS INDEX 102-600 & 102-603 OR 102-613 DESIGN STANDARDS.
 4. ADVANCE WARNING SHALL BE GIVEN PER FDOT STANDARD PLANS INDEX 102-600.
 5. MAINTENANCE OF TRAFFIC SHALL CONFORM TO FDOT STANDARD PLANS INDEX 102-600 & 102-603 OR 102-613 DESIGN STANDARDS.



MOT PLAN
SHEET: 1 of 1
DRAWN BY: BB
APPROVED BY: DS
DATE: XXXXXX
EVENT DATE: XXXXXXXX