

# REFORZA

**NOTA: PRECIOS NO INCLUYEN ENVIO NI IMPUESTOS, PRECIOS PUEDEN CAMBIAR DE ACUERDO A LA CAPACIDAD Y DISPONIBILIDAD DE LAS CELDAS DE CARGA, PRECIOS DE LISTA COMO REFERENCIA**

## COMPRESSION LOAD CELLS



[See details](#)

### Artech 90210 Compression Canister Load Cell (1.75 Mv/V)

Model 90210 is a multicolumn compression type load cell. It is hermetically sealed to provide better environmental protection. The cell is recommended for tank, truck, track and hopper type industrial applications. The cell is supplied with an integral 30 foot cable

---

Our Price: **US\$695.00**



[See details](#)

### Artech 90310 Compression Canister Load Cell (2.0 Mv/V)

The Model 90310 is a hermetically sealed, multi-column canister cell that is ideally suited for harsh environmental conditions. The cell housing is mild steel with epoxy enamel paint. NTEP certified for most commonly used capacities referenced below. The cell is recommended for tank, truck, track and hopper type industrial applications. The cell is supplied with an integral 30 foot cable

---

Our Price: **US\$914.00**

[Skype](#) [Ask a question about this product](#)



[See details](#)

### Artech 90510/90515 Tension/Compression Canister Load Cell (90510-2 Mv/V, 90515-3 Mv/V)

The Model 90510/90515 is a true hermetically sealed load cell. Although a canister, it uses the dual guided cantilever principle for a high degree of linearity and repeatability. This cell is used in harsh environments where it may be exposed to water and other contaminants. Typical applications include batching systems, tank/hopper weighing and scale conversions

---

Our Price: **US\$990.00**

[Skype](#) [Ask a question about this product](#)



[See details](#)

### Artech Ss90210 Stainless Steel Compression Canister Load Cell (1.75 Mv/V)



Model SS90210 is a multicolumn compression type load cell. It is hermetically sealed to provide better environmental protection. The cell is recommended for tank, truck, track and hopper type industrial applications. The cell is supplied with an integral 30 foot cable

---

Our Price: **US\$835.00**

#### Artech Ss90310 Stainless Steel Compression Canister Load Cell (2.0 Mv/V)

The Model SS90310 is constructed of stainless steel. A hermetically sealed, multi-column canister cell that is ideally suited for harsh environmental conditions. The cell housing is available in mild steel with epoxy enamel paint or stainless steel. Both versions have NTEP certification for most commonly used capacities referenced below. The cell is recommended for tank, truck, track and hopper type industrial applications. The cell is supplied with an integral 30 foot cable

---

Our Price: **US\$950.00**

[See details](#)



#### Rt 792 Compression Stainless Steel (50k - 200k)

The 792 canister is designed for compression applications. Its stainless steel construction combined with hermetically sealing allows the 792 to be used in harsh environments.

Built for heavy capacity weighing applications where accuracy and reliability are required over long periods of time. Hermetic sealing offers excellent protection from moisture and provides longterm stability and reliability.

---

Our Price: **US\$1200.00**

[See details](#)



#### Rt 92 Compression Stainless Steel (5k - 200k)

The 92 canister is designed for compression applications. Its stainless steel construction combined with hermetically sealing allows the 92 to be used in harsh environments.

A large range of capacities is available.

Hermetic sealing offers excellent protection from moisture and provides longterm stability and reliability.

---

Our Price: **US\$1184.00**

# PEFORZA

[See details](#)



## **Sensortronics-65114-Rocker-Column-Stainless-Steel (50k, 50k Le, 100k)**

The 65114 is a high capacity, stainless steel single column compression load cell. This product is specifically designed for use in rugged outdoor environments. Stainless steel construction with IP67 welded seal comes standard with optional true hermetic IP68 sealing available upon request. This load cell is used primarily in truck and train scales, but can just as easily be used to weigh tanks and silos. This load cell is rated intrinsically safe by the Factory Mutual System (FM); making it suitable for use in potentially explosive environments. This load cell is certified for Legal For Trade applications by both American NTEP and International OIML standards.

---

**Our Price: US\$674.00**

Market price: US\$707.00

[See details](#)



## **Tedea 120/122 Compression Stainless Steel (20t To 150t)**

Truck Scale and Silo Load Cell Tedea-Huntleigh Models 120 and 122 is a modern high capacity compression load cells of low profile. Complete with its own unique rocker mounting. Suitable for all heavy duty weighing applications, the Truck Scale and Silo Load Cells Tedea-Huntleigh Models 120 and 122 give the user high accuracy and low installation cost.

---

**Our Price: US\$504.00**

[See details](#)



## **Tedea 220 Compression, Stainless Steel (5000 To 30,000kg)**

Full Scale Output: 2 mV/V Bridge Resistance: 1000 ohms, nominal Material/Finish: Stainless steel Temperature: Operating temperature range 14° to 104°F/-10°C to 40°C Safe Overload: 150% at center loading point, full scale Rated Excitation: 10V DC (15V maximum) Total Error: 0.020% full scale Insulation Resistance: 2000 megohms Deflection at Capacity: <.5 mm at full scale Seal Type: Hermetically sealed, IP68 Cable Length: 5 m (5000 kg) 10 m (10-20,000 kg) 20 m (30,000 kg) Cable Diameter: .220 Polyurethane jacket.

# PEFORZA

Our Price: **US\$1040.00**

Market price: US\$1095.00 **save 5%**

[See details](#)



**Virtual Vlc-121 Compression Double-Ended Shear Beam Load Cell (10t To 50t)**

#### APPLICATIONS

Tank weighing,  
Truck scale

[See details](#)



**Virtual Vlc120 Compression Alloy Steel Load Cell (5 To 100k Lb)**

#### APPLICATIONS

Tank weighing  
Hopper weighing  
Platform scales

**Virtual Vlc123 Compression Alloy Steel Load Cell (15t To 30t)**

#### APPLICATIONS

Truck scale

Contact Us For Price

# PEFORZA



[See details](#)

## Virtual Vlc125 Compression Alloy Steel (24t)

### APPLICATIONS

Truck scale

---



[See details](#)

## Virtual Vlc127 Compression Alloy Steel Load Cell (30t)

### APPLICATIONS

Truck scale

---

## Double Ended Load Cells

**Double ended load cell**, account with an appearance strong or robust, solid and resistant. In addition to possessing along the work piece two holes or perforations, in the same way are prepared with two brackets pronounced in their limbs that distinguish it as a *double ended load cell* (varies according to the model of **load cell double support**), also has the cable connection driver that this commonly located in the center of the piece. **Peforza** account with *double ended load cell* whose designs and assemblies are targeted for applications that have a relation with the industrial economic sector or trade, in particular are ideal for working perfectly under demanding environments. **double ended load cell**, are characterized by being parts solids formed by metals such as aluminum, steel, alloy steel or stainless steel.

Double ended **load cell**, have environmental protection or external factors corrosive, ideal for the safeguarding and strengthening of the piece, since on occasions its implementation is designed to aggressive environments, hostile or simply free spaces where it is constantly in contact with the water, humidity or high temperatures. In his great catalog, peforza.com offers **double ended load cell** designed to all applications that are related to this type of cell, however each model has specific purposes special, reason by which are chosen materials, dimensions and type of protection different in each one of them, in specific mention may be made of the applications of rigid mounted and weighing of dynamic loads.

What relationship has the permissibility of the loads dynamics with the **double ended load cell**? Most of the **double ended load cell** is attributed the term of permissibility of dynamic loads, since this bound with all **weighing system** able to suppress the rigidity of all the elements that make up when you are running functions of *weighing*, in particular to the applications where it is not possible to achieve stabilization by one full load and where required to specify an exact amount, i.e. this virtue emphasizes the **weighing** of loads that are in movement, combining accurate results and certain, where the margin of error remains negligible and almost imperceptible. Reference is made in particular, with regard to the double ended load cell with: the loads that are located on a conveyor belt.

# PEFORZA

## PRODUCTS



### Artech 70210 Double Ended Shear Beam (5k To 250k Lb)

Model 70210, a double ended shear beam, is ideal for low profile pitless truck scales, tank and track scales. The cell is constructed of high alloy tool steel for repeatability and use in rugged areas where shock and overloading situations exist. The gage areas are environmentally protected with a thick, double water resistant seal and stainless steel plates. Load cells are supplied with an integral 30 feet of cable.

---

Our Price: **US\$600.00**

[See details](#)



### Artech 70310 Double Ended Shear Beam (10k To 200k Lb)

The Model 70310 double ended shear beam is ideally suited for truck, track, tank and hopper applications. From its nickel/chrome exterior protection to its triple-seal gage area, this cell is designed to withstand the rigors of harsh environmental conditions. The cell is compatible with the "Unilink" suspension system and is direct replacement for the 65058. Depending upon capacity, the cell is provided with either 40' or 60' of polyurethane jacketed cable at no extra charge

---

Our Price: **US\$605.00**

[See details](#)



### Artech 70510 Double Ended Shear Beam (1k To 200k Lb)

The Model 70510 double ended shear beam is designed primarily for tank and hopper weighing applications. It is normally used in conjunction with the WM-IV Weigh Module. The cell is environmentally sealed against moisture and plated with Nickel/Chrome to protect it against corrosion. There is also a stainless steel version, SS70510, available for food processing, pharmaceutical applications or hostile environments

---

Our Price: **US\$520.00**

# PERFORZA



[See details](#)

## **Artech 80210 Double Ended Shear Beam (20k To 200k Lb)**

The Model 80210, a double ended shear beam load cell, is ideally suited for tough environments associated with truck scales. Its construction of high alloy tool steel provides optimum protection under impact loading and adverse conditions. The cell is environmentally protected with two water resistant seals and nickel/chrome plating to assure resistance against corrosion

---

Our Price: **US\$625.00**



[See details](#)

## **Artech 80310 Double Ended Shear Beam (20k To 200k)**

The Model 80310 double link beam is designed for truck scale applications. This proven design offers excellent performance while minimizing load cell errors due to deck flexure or eccentric angular loading of the cell. Its construction of high alloy steel provides optimum protection against shock and overload. The cell is water resistant and nickel plated to ensure resistance to corrosion

---

Our Price: **US\$625.00**



[See details](#)

## **Artech Ss70210 Stainless Steel Double Ended Shear Beam (5k To 250k Lb)**

Model SS70210, a double ended shear beam, is ideal for low profile pitless truck scales and tank & track scales. Stainless Steel construction for high corrosive applications. The gage areas are environmentally protected with a thick, double water resistant seal and stainless steel plate. The load cells are supplied with an integral 30 feet cable

---

Our Price: **US\$750.00**



[See details](#)



#### **Artech Ss70310 Stainless Steel Double Ended Shear Beam (10k To 200k Lb)**

The Model SS70310 double ended shear beam is ideally suited for truck, track, tank and hopper applications. From its stainless steel construction to its triple-seal gage area, this cell is designed to withstand the rigors of harsh environmental conditions. The cell is compatible with the "Unilink" suspension system and is direct replacement for the 65058S. Depending upon capacity, the cell is provided with either 40' or 60' of polyurethane jacketed cable at no extra charge

---

Our Price: **US\$825.00**

[See details](#)



#### **Artech Ss70510 Stainless Steel Double Ended Shear Beam (1k To 200k Lb)**

The Model SS70510 stainless steel double ended shear beam is designed primarily for tank and hopper weighing applications. It is normally used in conjunction with the WM-IV Weigh Module. The cell is environmentally sealed against moisture. The SS70510 is recommended for food processing, pharmaceutical applications and hostile environments

---

Our Price: **US\$590.00**

[See details](#)



#### **Artech Ss80210 Stainless Steel Double Ended Shear Beam (20k To 200k Lb)**

The Model SS80210, a stainless steel double ended shear beam load cell, is ideally suited for tough environments associated with truck scales. Its stainless steel construction provides optimum protection under impact loading and adverse conditions. The cell is environmentally protected with two water resistant seals and the stainless steel constructions assures extended resistance against corrosion.

---

Our Price: **US\$850.00**



# PEFORZA



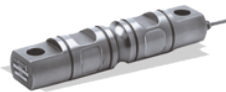
[See details](#)

## **Artech Ss80310 Stainless Steel Double Ended Shear Beam (20k To 200k)**

The Model SS80310 stainless steel double link beam is designed for truck scale applications. The proven design offers excellent performance while minimizing load cell errors due to deck flexure or eccentric angular loading of the cell. Its construction of stainless steel provides optimum protection against shock and overload. The cell is water resistant and the stainless steel construction ensures extended resistance to corrosion.

---

Our Price: **US\$765.00**



[See details](#)

## **Rt 5103 Double Ended Alloy Steel (5k - 250k)**

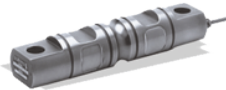
The 5103/9103 are double ended, centre loaded shear beam type load cells. The 5103 is nickel plated alloy steel while the 9103 is stainless steel. These products are suitable for tank weighing systems, low cost weighbridges and axle weighers.

A reliable sealing is ensured by the proprietary TRANSEAL potting compound and additional mechanical protection of the strain gauge area.

A specially designed mounting arrangement is available, providing the ideal solution for vessel / tank weighing.

---

Our Price: **US\$524.00**



[See details](#)

## **Rt 9103 Double Ended Stainless Steel (5k - 150k)**

The 9103 are double ended, centre loaded shear beam type load cells. The 5103 is nickel plated alloy steel while the 9103 is stainless steel.

These products are suitable for tank weighing systems, low cost weighbridges and axle weighers.

A reliable sealing is ensured by the proprietary TRANSEAL potting compound and additional mechanical protection of the strain gauge area.

A specially designed mounting arrangement is available, providing the ideal solution for vessel / tank weighing.

---

Our Price: **US\$600.00**

## **Rt 9803 Double Ended Stainless Steel (50k - 65k)**

The 9803 is a Double Ended Beam type load cell.

A reliable sealing and mechanical protection of the strain gauge area is ensured by the use of potting compound with a metal cover.

---

Our Price: **US\$736.00**



[See details](#)



#### **Sensortronics-60030-Shear-Beam-Alloy-Steel (50lb To 300lb)**

The 60030 is a compact, low-capacity, alloy steel, high precision bending beam load cell. This product's small size and accuracy make it ideal for applications that demand high performance from a small package. This load cell is commonly used in platform scales, conveyer scales, and varied process weighing applications.

---

**Our Price: US\$305.00**

[See details](#)



#### **Sensortronics-65016wh-Double-Ended-Beam-Stainless-Steel (1000 To 25,000lb)**

Stainless steel and fully hermetic version of the popular 65016 series of load cells with capacities from 1000 to 75,000 lbs. Integral 25'/7.6 m of cable. Full Scale Output: 3.0 mV/V nominal Bridge Resistance: 700 ohms, nominal Material/Finish: Stainless steel Temperature: Compensated range 0°F to 150°F/-18°C to 65°C Manufacturer Model Number: 65016W-XX-0104WH Safe Overload: 150% Full scale Safe Sideload: 100% Full scale Rated Excitation: 10V DC (15V maximum) Nonlinearity: 0.03% Full scale Hysteresis: 0.02% Full scale Insulation Resistance: 5000 megohms Seal Type: Hermetically sealed, IP68 Cable Length: 25'/7.6 m Cable Diameter: .200 Polyurethane jacket

---

**Our Price: US\$641.00**

Market price: US\$675.00 **save 5%**

[See details](#)



#### **Sensortronics-65040a-Double-Ended-Beam-Alloy-Steel (25,000 To 125,000lb)**

Designed for center mounting and double link loading. Capacities from 25,000 to 125,000 lb (11,339.8 to 56,699.1 kg). Integral 35' (10.6m) cable and NTEP approved. Nickel plated and environmentally protected with stainless steel side plates.

---

**Our Price: US\$584.00**

Market price: US\$615.00



[See details](#)



#### **Sensortronics-65040s-Double-Ended-Beam-Stainless-Steel (25,000 To 125,000lb)**

This model is an upgraded version of the Vishay Sensortronics 65040A, and is offered in stainless steel, with welded sealing and is NTEP approved. The center-supported double-ended beam design is compatible with Unilink/Translink mounts. The full stainless, welded seal upgrade makes this model ideal for applications where harsh chemicals and washdown conditions exist. This model is available in capacities ranging from 25,000 to 200,000 lb (11,339.8 to 90,718.5 kg), and is provided with a standard 35' (10.6m) cable.

---

**Our Price: US\$726.00**

Market price: US\$765.00 **save 5%**

[See details](#)



#### **Sensortronics-65058s-Double-Ended-Beam-Stainless-Steel (20,000 To 100,000lb)**

The Vishay Sensortronics 65058 S is a double-ended beam specifically designed for harsh environment vehicle weighing applications. This stainless steel, welded seal product is an ideal substitute for traditional alloy steel, nickel plated units where corrosive or washdown conditions exist. This model is compatible with both the MVS and TSA mounts, and is available in capacities ranging from 10,000 to 200,000 lb (2268.0 to 90,718.5 kg). Each unit is provided with a standard 35'/10.6 m) cable and NTEP approved.

---

**Our Price: US\$831.00**

Market price: US\$875.00 **save 5%**

[See details](#)



#### **Sensortronics-65061a-Double-Ended-Beam-Alloy-And-Stainless-Steel (40,000lb, 50,000lb)**

This unique loading button double-ended beam was used in the old style Rodan Fairbanks truck scales for years. This NTEP approved, zinc plated, alloy steel load cell (stainless welded seal in 50,000 lb is also available) is sealed with a potting compound that has been proven through the test of time in numerous applications. This unit is offered in capacities of 40,000 and 50,000 lb (18,143.7 to 22,679.6kg), and is affordably priced compared to other replacement cell options in the marketplace. Each unit is provided standard with 60' (18.2m) of copper overbraid.

---

**Our Price: US\$1135.00**

Market price: US\$1195.00

[See details](#)



#### **Tedea-4158-Double-Ended-Alloy-Steel (10 A 75k Lb)**



The model 4158 is an alloy steel, environmentally sealed, double-ended beam product that is interchangeable with several other manufacturers' designs. This product features the high quality manufacturing techniques used by TedeA, and is available in capacities ranging from 10,000 to 75,000 lb (4535.9 to 34,019.4 kg). Rugged and reliable, this family of products is NTEP certified from 20,000 to 75,000 lb. Each of these products is available with a 25' (7.6m) cable.

---

Our Price: **US\$508.00**



[See details](#)

#### Virtual Vic-121 Compression Double-Ended Shear Beam Load Cell (10t To 50t)

##### APPLICATIONS

Tank weighing,  
Truck scale

---

Contact Us For Price



[See details](#)

#### Virtual Vic101 Double Ended Shear Beam Alloy Steel (1k To 75k)

##### APPLICATIONS

Tank, bin, silo  
batching, blending,  
and mixing systems

---

Contact Us For Price



[See details](#)



Virtual Vlc102 Double-Ended Shear Beam Alloy Steel (10k To 200klb)

#### APPLICATIONS

Tank, bin, silo

batching, blending,

and mixing systems

Contact us for price: \$

## S Beam

**S beam** are ideal according to the object that you want to measure and the capacity of your team of *weighing* in general, so that it is of the utmost importance that you undergo a load cell *S beam* that go according to your needs. **Load Cells S beam**, are those that have output either of tension or **compression**, its name is due to the fact that take the form of an "S". In **Peforza** we count with variety of *S beam*, in terms of load capacity, materials of development, variety of protection among other qualities.

In general terms the **S beam** has a very particular characteristic, which is the rejection of the output side, since it is higher. In our stock find S beam designed and manufactured with stainless steel, since this robust metal is timely in the implementation of parts that are subjected to extreme temperatures, or to environments highly corrosive, so that its presence in these designs contributes to an optimal development environment, long periods of operation, resistance and low vulnerability. Thus, we also count with lighter materials for the development of our *S beam*, as is the aluminum, as there are applications where it should not be heavy metals for optimal operations.

peforza.com account with a catalog full of *S beam* that guarantee the secrecy of each piece, because the life of these tools of **weighing** this right in the interior of each part, so that the guard of each configuration circuit is elementary, and count with IP protection is essential; as well as a large amount of certifications to ensure the high quality of each **S beam**.

#### PRODUCTS



[See details](#)

Amcell Stlx Load Cell "S" Type (250lb To 40k)

Tool Steel, Meets OIML and HB44 III Standards

---

Our Price: **US\$360.00**



Bsa-S-Beam-Tool-Steel-Transcell (50lb To 5klb)

**Transcell BSA S-Beam Load Cell** fabricated in Alloy Steel

---

Our Price: **US\$160.00**



Rt 42u/43u Tention-Compression Alloy Steel (5k -250k)

***Features:***

- Capacities: 5 to 250 K lb
- Environmental protection: IP68 (DIN 40.050)
- Material: Epoxy coated alloy steel.
- Hermetically sealed

---

Our Price: **US\$975.00**

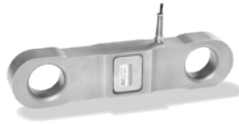


Rt 9363 "S" Type Stainless Steel (50kg - 10000kg)

**DESCRIPTION:** *The 9363 is a true multi-purpose stainless steel S-type load cell which can be used either in tension or compression. This product is suitable for a wide range of hybrid scales, overhead track scales, belt scales and process weighing applications. Reliable sealing is ensured by the proprietary TRANSEAL potting compound and additional mechanical protection of the strain gauge area. This product meets the stringent Weights and Measures requirements throughout Europe.*

Our Price: **US\$236.00**

# PERFORZA



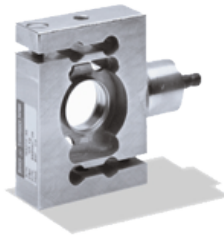
[See details](#)

## Rt 9922 Tension Link Stainless Steel (10k - 200k)

The 9922 Tension Link is designed for special applications requiring heavy capacity. A reliable sealing and mechanical protection of the strain gauge area is ensured by the use of potting compound with a metal cover.

---

Our Price: **US\$1089.00**



[See details](#)

## Rt Bps "S" Type Stainless Steel (100lb - 10k)

The BSP is a stainless steel S-type load cell that can be used in either tension or compression. This product is suitable for a wide range of hybrid scales, overhead track scales, belt scales and process weighing applications. The fully welded construction and water block cable entry ensure that this product can be used successfully in the harsh environments found in the food, chemical and allied process industries. This product fully meets the stringent European Weights and Measures requirements through Europe.

---

Our Price: **US\$540.00**



[See details](#)

## Sensortronics-60001-S-Type-Alloy-Steel (25 To 3000lb)

Model 60001 is a tension-compression load cell with a humidity-resistant coating and shielded cables, which enable use in harsh environments while maintaining operating specifications. Additional sense wires compensate for changes in lead resistance due to temperature change and/or cable extension.

---

Our Price: **US\$295.00**

# PEFORZA

[See details](#)



## Sensortronics-60050-S-Beam-Stainless-Steel-Ip67 (250 To 20,000lb)

Single- or multiple-cell applications. Integral 20/6.1 m cable and full environmental protection with stainless steel side plates. Stainless steel construction for added corrosion protection. Capacities from 250 to 20,000 lb (113.4 to 9071.9 kg). Capacities of 5000 lb (2268.0 kg) or more have standardized output for multiple-cell installations.

---

Our Price: **US\$325.00**

[See details](#)



## Sensortronics-60063-S-Type-Stainless-Steel (500lb To 20k)

### APPLICATIONS

- ▲ For hostile environments
- ▲ Food and beverage processing
- ▲ Chemical and plastics processing
- ▲ Pharmaceutical and biomedical
- ▲ Bin, hopper and belt conveyor scales
- ▲ Level and inventory monitoring
- ▲ Tension and compression measurements

---

Price: **US\$825.00**

[See details](#)



## Virtual Vlc110 S-Type Alloy Steel Load Cell (100lb To 20klb)

### APPLICATIONS

Mechanical scale conversion,  
Tank, bin and hopper weighing,  
Truck scale conversion,  
Tension / compression measurement

Contact price:





## Shear Beam

**Shear Beam**, are *load cells* ideal for the scales of low profile and for processes in general with **scales**. In general the *Shear Beam* are implemented in applications where industrial processes and processes of the maritime industry; we have diversity of Shear Beam, either in different sizes, manufactured in stainless steel or metal alloys; that can provide resistance and quality. **Load Cells Shear Beam**, counted with a variety of capabilities maximum and minimum load, which contribute to the implementation of processes of **weighing** with high level of accuracy. In *peforza.com* we have load capacity that varies from the 250 lb up to 20,000 lb. In addition we have different models of load cell **Shear Beam** that have certifications NTEP.

The *Shear Beam* provide an aspect of robustness, because its external appearance is compact, ideal for specific applications, in addition to being tools assembled with great secrecy, which prevents the direct contact of environmental agents corrosive (moisture, water, fire, among others) with the internal mechanisms of the Shear Beam. You cannot neglect the importance of the capacity of each tool, because sometimes the accuracy that is required in each processes this linked to this factor. All our **Shear Beam** are ideal for deployments in the interior as in the exterior, however its compact size of small dimension allows you to comfortably carry out installations in confined spaces, in addition to being very compatible with scales of low profile.

### PRODUCTS



[See details](#)

#### Artech 30210 Thru Hole Load Cell Shear Beam Alloy Steel (250lb To 20klb)

- \* Model 30210 (Alloy Steel threaded hole)
- \* 250 to 20K pounds capacities
- \* Complete environmental protection IP-67
- \* Alloy Steel versions available
- \* NTEP certified versions available for class III / III L 5000 divisions
- \* (\* Bending Beam)

---

Our Price: **US\$265.00**



[See details](#)

#### Artech 30310 Shear Beam Alloy Steel (250lb To 20klb)

- \* Model SS30310 (Alloy Steel threaded hole)
- \* 250 to 20K pounds capacities
- \* Complete environmental protection IP-67
- \* Alloy Steel versions available
- \* NTEP certified versions available for class III / III L 5000 divisions
- \* (\* Bending Beam)

---

Our Price: **US\$265.00**

# PERFORZA

[See details](#)



## **Artech 30410 Single Ended Beam (1klb To 10klb)**

Model 30410, a rectangular shear link beam, is a versatile and low cost load cell for link loading. The moveable linkage helps reduce excessive side loads and reading errors. Its high alloy tool steel construction makes the cell durable for use in livestock and some tank scales.

---

Our Price: **US\$290.00**

[See details](#)



## **Artech 50110 Mini-Beam Load Cell (2lb To 250lb)**

This precision load transducer uses the latest in sensor technology. The 50110 responds to both compression and tension loading. Available in alloy steel, stainless steel or aluminum.

---

Our Price: **US\$325.00**

[See details](#)



## **Artech 50210 Miniature Round Beam (25lb To 500)**

Model 50210, a single ended miniature round beam, is ideal for very low capacity platform and bench scales. The high alloy tool steel construction is ideal for performance repeatability in many applications. Load cells are supplied with an integral 20 foot cable

---

Our Price: **US\$235.00**

[See details](#)



## **Artech 60410 Heavy Duty Aluminum Load Cell (100lb To 2k Lb)**

The Model 60410 single-point load cell requires a minimum of engineering design to incorporate it into a platform structure since it can be bolted directly to the weighing pan. Its resistance to off-center loading error allows the use of large weighing pans. It is an excellent choice for use in counting scales, bench scales and moderate capacity floor scales.

---

Our Price: **US\$375.00**



[See details](#)



#### Artech 61010 Steel Platform Load Cell (10lb To 100lb)

Model 61010 single-point load cell is designed for any application where the cell may be subject to overload by mishandling or excess weighing. The stainless steel construction makes it an ideal choice for installation in corrosive environments such as those found in the poultry industry. As standard the cell has the gaged area potted to protect it from moisture. The load cell is provided with 10 feet of cable

---

Our Price: **US\$385.00**

[See details](#)



#### Artech 62610 High Precision Single Point (50lb, 100lb, 250lb)

- ▲ Capacity range 5 to 250 pounds
- ▲ Stainless Steel / Nickel Plated Steel
- ▲ Moment Corrected upto 24" x 24" platforms
- ▲ Environmentally Sealed
- 20 Ft. PVC Jacketed Cable

---

Our Price: **US\$565.00**

[See details](#)



#### Artech Ss30210 Shear Beam Stainless Steel (250 To 20k)

- \* Model SS30210 (Stainless Steel threaded hole)
- \* 250 to 20K pounds capacities
- \* Complete environmental protection IP-67
- \* Stainless Steel versions available
- \* NTEP certified versions available for class III / III L 5000 divisions
- (\* Bending Beam)

---

Our Price: **US\$315.00**

# PEFORZA

[See details](#)



## Artech Ss30310 Shear Beam Stainless Steel (250 To 20k)

- \* Model SS30310 (Stainless Steel threaded hole)
- \* 250 to 20K pounds capacities
- \* Complete environmental protection IP-67
- \* Stainless Steel versions available
- \* NTEP certified versions available for class III / III L 5000 divisions
- (\* Bending Beam)

---

Our Price: **US\$315.00**

[See details](#)



## Artech Ss30410 Stainless Steel Single Ended Beam (1klb To 10klb)

Model SS30410, a rectangular shear link beam, is a versatile and low cost load cell for link loading. The moveable linkage helps reduce excessive side loads and reading errors. Its high alloy tool steel construction makes the cell durable for use in Livestock and tank scales.

---

Our Price: **US\$360.00**

[See details](#)



## Artech Ss30510 Stainless Steel Rectangular Shear Beam (1000lb To 10000lb)

AVAILABLE WITH 1000 BRIDGE RESISTANCE

- \* Stainless Steel
- \* BLC Interchangeable
- \* Meets NEMA-6, IP67 for wash-down resistance
- \* 20 Ft. PVC Jacketed Cable
- \* Non - NTEP
- \* Excellent for harsh environment applications

---

Our Price: **US\$375.00**

# PEFORZA

[See details](#)



Artech

## **Artech Ss30610 Stainless Steel Hermetically Sealed Shear Beam (1klb To 40klb)**

Model SS30610 is constructed of stainless steel and hermetically sealed. The SS30610 load cell is an excellent choice for the toughest industrial environments. This cell is ideal for material processing, food processing and platform scales. Other capacities are available upon request

---

Our Price: **US\$545.00**



## **Artech Ss50110 Mini Celda De Carga De Acero Inoxidable (25lb To 250lb)**

This precision load transducer uses the latest in sensor technology. The SS50110 responds to both compression and tension loading.

---

Our Price: **US\$295.00**

[See details](#)



## **Artech Ss50210 Miniature Round Beam Stainless Steel (25lb To 500)**

Model SS50210, a single ended miniature round beam, is ideal for very low capacity platform and bench scales. The stainless steel construction is ideal for high corrosion applications. Load cells are supplied with an integral 20 foot cable.

---

Our Price: **US\$285.00**

# PERFORZA

[See details](#)



## Artech Ss61010 Stainless Steel High Speed Check Weighing Single Point Load Cell (25lb, 50lb, 100lb, 250lb)

Model SS61010CW single-point load cell is designed for check weighing application where the cell may be subject to overload by mishandling or excess weighing. The stainless steel construction makes it an ideal choice for installation in corrosive environments such as those found in the poultry industry. The cell has the gage area potted to protect it from moisture. The load cell is provided with 10 feet of cable.

---

Our Price: **US\$600.00**

[See details](#)



## Artech Ss61010 Stainless Steel Platform Load Cell (10lb, 15lb, 25lb, 30lb, 50lb, 100lb)

Model SS61010 single-point load cell is designed for any application where the cell may be subject to overload by mishandling or excess weighing. The stainless steel construction makes it an ideal choice for installation in corrosive environments such as those found in the poultry industry. As standard the cell has the gaged area potted to protect it from moisture. The load cell is provided with 10 feet of cable

---

Our Price: **US\$425.00**

[See details](#)



## Hbm Thc Sigle Ended Beam Load Cell Stainless Steel (0.5klb To 10klb)

- \* Same model HLC
- \* Hermetically sealed (IP68)
- \* Stainless steel
- \* Low overall height
- \* Meets EMC/ESD requirements according to EN 45 501
- \* Complies with OIML R60 regulations up to 3000 d for scales according to EN 45 501
- \* Available options: Explosion-proof versions according to ATEX95 (for HLCF1C3)

---

Our Price: **US\$450.00**

# PEFORZA



[See details](#)

## Mettler Toledo Tb Stainless Steel Shear Beam Load Cell (1250lb, 2500lb)

- \* Hermetically sealed (IP68)
- \* Stainless steel
- \* Low overall height
- \* Meets EMC/ESD requirements according to EN 45 501
- \* Complies with OIML R60 regulations up to 3000 d for scales according to EN 45 501
- \* Available options: Explosion-proof versions according to ATEX95 (for HLCF1C3)

---

Contact Us For Price

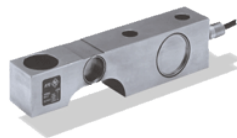


## Rt 9123 Shear Beam Stainless Steel (250lb - 20k)

The 9123/5123 are low profile single ended shear beam type load cells. The 9123 is stainless steel whilst the 5123 is nickel plated tool steel. These products are suitable for small and medium platform scales, overhead track scales, hopper scales and process weighing applications. Reliable sealing is ensured by the proprietary TRANSEAL potting compound and additional mechanical protection of the strain gauge area. Ease of installation is made possible through the use of a partially threaded hole to accept levelling feet, load buttons or loading cables.

---

Our Price: **US\$236.00**



[See details](#)

## Rt Ssb Shear Beam Stainless Steel (1k - 10k)

The SSB is a stainless steel single ended shear beam type load cell.

This robust product is suitable for a wide range of platform scales, pallet scales, overhead track scales and process weighing applications.

The fully welded construction and waterblock cable entry ensure that this product can be used successfully in harsh environments found in the food, chemical and allied process industries.

This product meets the stringent Weights and Measures requirements throughout Europe.

---

Our Price: **US\$548.00**



[See details](#)

## Tedeia 3510-Lbs Single-Ended Beam, Stainless Steel Ip68 (1000 To 4000lb)

Low profile and all-welded sealing combined with high accuracy makes the 3510 ideally suited for low-profile platforms, weigh modules, tanks and silos.

---

Our Price: **US\$485.00**

# PEFORZA



[See details](#)

## Tede-a-3411/3421-Shear-Beam-Single-Ended-Alloy-Steel/Stainless-Steel (1k To 10k)

This family of **high quality single-ended beams** are available in *both alloy and stainless steel with NTEP approval*. These products are *ideal for low profile platforms, pallet truck weighers, tanks and silos*. The durable stainless steel product offering is new, and provides a solid choice for more severe weighing applications. Both versions are available in capacities ranging from 1,000 to 10,000 lb. (453.6 to 4535.9 kg). A standard 10' (3m) cable is provided. Available upon request

Our Price: **US\$295.00**



[See details](#)

## Virtual Vic-121 Compression Double-Ended Shear Beam Load Cell (10t To 50t)

### APPLICATIONS

Tank weighing,  
Truck scale

Contact Us For Price



[See details](#)

## Virtual Vic100s Shear Beam Stainless Steel (250lb To 20klb)

### APPLICATIONS

Tank weighing  
Hopper weighing  
Platform scales

Contact Us For Price



[See details](#)

## Virtual Vic100sh Shear Beam Hermetically Sealed Stainless Steel Load Cell (1k To 10klb)

### APPLICATIONS

Tank weighing  
Hopper weighing  
Platform scales

Contact Us For Price



# PEFORZA

---



[See details](#)

## Virtual Vic100shear Beam Alloy Steel (250lb To 20klb)

### APPLICATIONS

Tank weighing  
Hopper weighing  
Platform scales

**Contact Us For Price**

---



[See details](#)

## Virtual Vic101 Double Ended Shear Beam Alloy Steel (1k To 75k)

### APPLICATIONS

Tank, bin, silo  
batching, blending,  
and mixing systems

**Contact Us For Price**

---



[See details](#)

## Virtual Vic102 Double-Ended Shear Beam Alloy Steel (10k To 200klb)

### APPLICATIONS

Tank, bin, silo  
batching, blending,  
and mixing systems

**Contact Us For Price**

---



## Single Point

**Load Cells** *single point*, are another type of transducers as its name says that possess only one point of power transmission; they are generally used in balances Simple, **scales** of low profile among others. The single point, are designed for computers on a single unit of signal transmission. Another factor to consider when choosing any *load cell* **single point** is the maximum capacity and minimal, because this has a direct impact with the level of accuracy of results that can throw the load cell; such capacity ranges between 1500 Kg/ 3000 lb, 2000 Kg/ 4000 Lb.

Each *single point*, is elaborated with different materials, each one of them suitable for each application or specific activity, either indoor or outdoor use, in order, we count with load cells **single point** with aluminum, since in their majority dominates this material, of course by its lightness, since this tool is intended for **weighing** operations of less capacity than the rest of the *load cells*. Additionally the single point count with a hermetic seal, that provide security and at the same time stability in each one of the internal components of the **load cell**. *peforza.com* supplies all the brands and models of **load cells** single point, as well as we also offer direct replacements and 100% compatibility guaranteed.

### PRODUCTS



[See details](#)

#### Artech 30410 Single Ended Beam (1klb To 10klb)

Model 30410, a rectangular shear link beam, is a versatile and low cost load cell for link loading. The moveable linkage helps reduce excessive side loads and reading errors. Its high alloy tool steel construction makes the cell durable for use in livestock and some tank scales.

---

Our Price: **US\$290.00**



[See details](#)

#### Artech 50110 Mini-Beam Load Cell (2lb To 250lb)

This precision load transducer uses the latest in sensor technology. The 50110 responds to both compression and tension loading. Available in alloy steel, stainless steel or aluminum.

---

Our Price: **US\$325.00**



[See details](#)

#### Artech 60210 Low Profile Steel Platform Load Cell (10lb To 200lb)

Model 60210/SS60210 is a low profile load cell and is ideal for precision single point platform scale applications. Model 60210 is designed for low eccentric load sensitivity, and easy replacement

---

Our Price: **US\$302.00**

# PEFORZA



[See details](#)

## Artech 60410 Heavy Duty Aluminum Load Cell (100lb To 2k Lb)

The Model 60410 single-point load cell requires a minimum of engineering design to incorporate it into a platform structure since it can be bolted directly to the weighing pan. Its resistance to off-center loading error allows the use of large weighing pans. It is an excellent choice for use in counting scales, bench scales and moderate capacity floor scales.

---

Our Price: **US\$375.00**



[See details](#)

## Artech 60610 Low Capacity Single Point Load Cell (5lb To 100lb)

- ▲ 5 to 100 pounds capacities
- ▲ High Speed Check-Weighing
- ▲ Moment Corrected for 6" x 6" platforms for 4-15 pound capacities
- ▲ 12" x 12" platform for 20 x 100 Lbs capacities
- ▲ Stainless Steel or Nickel Plated Steel
- ▲ Environmentally Protected
- 10 Ft. PVC Jacketed Cable

---

Our Price: **US\$335.00**



[See details](#)

## Artech 61010 Steel Platform Load Cell (10lb To 100lb)

Model 61010 single-point load cell is designed for any application where the cell may be subject to overload by mishandling or excess weighing. The stainless steel construction makes it an ideal choice for installation in corrosive environments such as those found in the poultry industry. As standard the cell has the gaged area potted to protect it from moisture. The load cell is provided with 10 feet of cable

---

Our Price: **US\$383.00**

# PEFORZA

[See details](#)



## Artech 62610 High Precision Single Point (50lb, 100lb, 250lb)

- ▲ Capacity range 5 to 250 pounds
- ▲ Stainless Steel / Nickel Plated Steel
- ▲ Moment Corrected upto 24" x 24" platforms
- ▲ Environmentally Sealed
- 20 Ft. PVC Jacketed Cable

---

Our Price: **US\$565.00**

[See details](#)



## Artech Ss30410 Stainless Steel Single Ended Beam (1klb To 10klb)

Model SS30410, a rectangular shear link beam, is a versatile and low cost load cell for link loading. The moveable linkage helps reduce excessive side loads and reading errors. Its high alloy tool steel construction makes the cell durable for use in Livestock and tank scales.

---

Our Price: **US\$360.00**

[See details](#)



## Artech Ss30510 Stainless Steel Rectangular Shear Beam (1000lb To 10000lb)

AVAILABLE WITH 1000 BRIDGE RESISTANCE

- \* Stainless Steel
- \* BLC Interchangeable
- \* Meets NEMA-6, IP67 for wash-down resistance
- \* 20 Ft. PVC Jacketed Cable
- \* Non - NTEP
- \* Excellent for harsh environment applications

---

Our Price: **US\$375.00**

# PERFORZA

[See details](#)



## **Artech Ss30610 Stainless Steel Hermetically Sealed Shear Beam (1klb To 40klb)**

Model SS30610 is constructed of stainless steel and hermetically sealed. The SS30610 load cell is an excellent choice for the toughest industrial environments. This cell is ideal for material processing, food processing and platform scales. Other capacities are available upon request

---

Our Price: **US\$545.00**

[See details](#)



## **Artech Ss50110 Mini Celda De Carga De Acero Inoxidable (25lb To 250lb)**

This precision load transducer uses the latest in sensor technology. The SS50110 responds to both compression and tension loading.

---

Our Price: **US\$293.00**

[See details](#)



## **Artech Ss60210 Stainless Steel Platform Load Cell (10lb To 200lb)**

Model 60210/SS60210 is a low profile load cell and is ideal for precision single point platform scale applications. Model 60210 is designed for low eccentric load sensitivity, and easy replacement

---

Our Price: **US\$335.00**

[See details](#)



## **Artech Ss61010 Stainless Steel High Speed Check Weighing Single Point Load Cell (25lb, 50lb, 100lb, 250lb)**

Model SS61010CW single-point load cell is designed for check weighing application where the cell may be subject to overload by mishandling or excess weighing. The stainless steel construction makes it an ideal choice for installation in corrosive environments such as those found in the poultry industry. The cell has the gage area potted to protect it from moisture. The load cell is provided with 10 feet of cable.

---

Our Price: **US\$600.00**

# PEFORZA

[See details](#)



## **Artech Ss61010 Stainless Steel Platform Load Cell (10lb, 15lb, 25lb, 30lb, 50lb, 100lb)**

Model SS61010 single-point load cell is designed for any application where the cell may be subject to overload by mishandling or excess weighing. The stainless steel construction makes it an ideal choice for installation in corrosive environments such as those found in the poultry industry. As standard the cell has the gaged area potted to protect it from moisture. The load cell is provided with 10 feet of cable

---

Our Price: **US\$425.00**

[See details](#)



## **Hbm Pw15 Single Point, Stainless Steel (10kg To 150kg)**

A new stainless steel, single point load cell from HBM. With capacities from 10 to 100 kg (22.1 to 220.5 lb), this load cell is OMIL R60 and R76 approved. The PW15 is ideal for platform, hanging scale, and other low-capacity beam applications. Complete with 3.1 m/10' of load cell cable.

---

Our Price: **US\$295.00**

[See details](#)



## **Hbm Pw15ah Single Point , Stainless Steel (10kg, 20kg, 50kg, 100kg)**

HBM has introduced its model PW15AH, a single point load cell that offers IP69K, the highest degree of protection possible, and is also suited for use with high-pressure cleaners.

---

Our Price: **US\$695.00**



#### Hbm Sp4 Single Point Aluminum (1k To 200kg)

Retail scales, Small platforms, Checkweighers

---

#### Features

- Aluminium construction, also available in stainless steel
- Environmentally sealed
- Moment compensated
- 2 mV/V output, 350 ohm bridge

---

Our Price: **US\$180.00**



[See details](#)

#### Revere Transducers 462 Single Point; Alloy Steel, Ip67 (2 To 250lb)

Very high-performance single-point cell designed for high-precision counter scales. Negligible error from off-center loading.

---

Our Price: **US\$595.00**



[See details](#)

#### Revere Transducers Hps Single Point, Stainless Steel (13.2 To 100lb)

Low-profile single-point load cell designed for bench scale and checkweigher applications in caustic/acidic environments.

---

Our Price: **US\$615.00**



[See details](#)



#### Rice Lake Load Cells RI 1042 Single Point Aluminum (1kg, 3kg,5kg, 10kg, 15kg, 20kg, 30kg, 50kg, 75kg, 100kg)

A low-profile single point for platform weighing, this model is constructed of aluminum, and is a two-beam design. This design offers high immunity to side forces and is specially coated to provide humidity resistance. The unit is available in a capacity range from 1 to 100 kg (2.2 to 220.5 lb). Complete with 10/3.1 m load cell cable.

---

Our Price: **US\$180.00**



[See details](#)

#### Rice Lake RI1250 Single Point Aluminum 50 To 1000 Kg (110.2 To 2204.6 Lb)

High-capacity, off-center-loading load cell accurately weighs loads from 50 to 1000 kg (110.2 to 2204.6 lb). Long-term stability and durability are maintained. These load cells with potted cavities offer excellent performance in damp environments.

---

Our Price: **US\$315.00**



[See details](#)

#### Rice Lake RI1260 Single Point Aluminum 50 To 635 Kg (110.2 To 1400.0 Lb)

High-capacity, off-center-loading aluminium load cell. This model is of the two-beam design, and is specially coated to assure durability in harsh environments.

---

Our Price: **US\$310.00**



[See details](#)

#### Rice Lake RImk1 Single Point Alloy Steel 50 To 3000 Lb (22.7 To 1360.8 Kg)

Low-capacity, off-center-loading load cell. Interchangeable with NCI® Model MK1. Capacities from 50 to 3000 lb (22.7 to 1360.8 kg). Integral 10/3.1 m cable.

---

Our Price: **US\$860.00**



[See details](#)

#### Rice Lake RImk21 Single Point Stainless Steel 4.5 To 50 Kg (9.9 To 110.3 Lb)

The RLMK21's single-point design is a durable, accurate and cost-effective alternative for Weigh-Tronix® 3270 Series checkweighers.

---

Our Price: **US\$695.00**





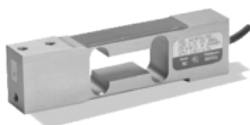
[See details](#)

#### Rice Lake R1mk4 Single Point Alloy/Stainless Steel 10 To 100 Lb (4.5 To 45.3 Kg)

With capacities ranging from 10 to 100 lb (4.5 to 45.3 kg), these load cells are plated and have special moisture-resistance encapsulants for damp environments. Interchangeable with NCI® Model MK4. Integral 10'/3.1 m load cell cable.

---

Our Price: **US\$695.00**



[See details](#)

#### Rt 642 Single Point Aluminium (5kg - 100kg)

##### ***DESCRIPTION:***

The 642C is an aluminium single point (moment insensitive) load cell.

Single point load cells eliminate the need for flexures and levers thus greatly simplifying scale design and reducing cost. The 642C load cell is suitable for use in a wide range of packaging machinery, low capacity scales, checkweighers and general process weighing.

Full sealing ensures this product can be used in a variety of industrial applications.

This product fully meets the stringent Weights and Measures requirements throughout Europe.

---

Our Price: **US\$140.00**



[See details](#)

#### Rt 652 Single Point Aluminium (50kg - 500kg)

The 652 is an aluminium single point (moment insensitive) load cell.

The use of single point load cells eliminates the need for flexures and levers thus greatly simplifying scale design and reducing cost. The 652 load cell is suitable for a wide range of medium capacity platform scales, packaging machinery and general process weighing.

Full sealing ensures this product can be used in a variety of industrial applications.

This product meets the stringent Weights and Measures requirements throughout Europe.

---

Our Price: **US\$252.00**



[See details](#)

#### Rt Hps Single Point Stainless Steel (6kg - 100lb)

The HPS is a unique fully welded all stainless steel single point (moment insensitive) load cell.

This product is suitable for low capacity platform scales, multi-head packaging machines, check weighers, loss-in-weight feeders, belt scales and general process weighing applications.

The unique construction ensures that this product can be used successfully in harsh environments found in the food, chemical and allied industries.

This product meets the stringent Weights and Measures requirements throughout Europe.

---

Our Price: **US\$492.00**



[See details](#)

#### Salter-Fad-Single-Point-Aluminum (5kg To 100kg)

- Single Point Aluminum

---

Our Price: **US\$135.00**



[See details](#)

#### Salter-Faj-Single-Point-Aluminum (3kg To 10kg)

- Single Point Aluminum

---

Our Price: **US\$95.00**



[See details](#)

#### Salter-Fas-Single-Point-Aluminum (10kg To 100kg)

- Single Point Aluminum (Equivalent to Rice Lake RL 1040 & Teda 1040)

---

Our Price: **US\$135.00**



[See details](#)

#### **Sensortronics-60060-Single-Point-Aluminum-Clear-Anodized-Ip67 (100 To 2000 Lb)**

High-capacity off-center load cell accurately weighs loads on a 30" x 30" platform. Aluminum clear anodized construction.

---

Our Price: **US\$350.00**



[See details](#)

#### **Tede-1042s-Single-Point-Aluminum-Load-Cell (20 To 100kg)**

A lower-profile single-point load cell for platform weighing, this two beam, aluminum constructed design offers high immunity to side forces and is coated to provide humidity resistance. NTEP certified to 7500 divisions. Capacities from 20 to 100 kg (44.1 to 220.5 lb). Complete with 3.1 m/10' of load cell cable.

---

Our Price: **US\$195.00**



[See details](#)

#### **Tede-1240-Single-Point-Stainless-Steel-Load-Cell (200kg, 250kg)**

This cell is ideally suited for applications in light industrial or people weighing where overall deck height is a concern. The three-beam design makes the load cell less likely to be impacted by side forces and mounting imperfections. It features stainless steel construction and humidity-resistant coating for use in harsh environments with extreme temperatures. Each unit is provided with a standard 1 m/3.3' cable.

---

Our Price: **US\$350.00**



[See details](#)

#### **Tede-1241-Single-Point-Aluminum-Oiml-C3-Load-Cell (100 To 250kg)**

The 1241 combines a low profile, 3-beam off-center design for direct mounting to weighing platforms, hanging scales, and other eccentric loading applications. The load cell features four mounting holes instead of the traditional two, to provide additional loading stability. The 1241 is constructed of aluminum, and sealed using a unique humidity-resistant protective coating to assure durability and long life.

---

Our Price: **US\$305.00**



[See details](#)



#### **Tede-a-1250-Potted-Single-Point-Aluminum-Load-Cell (50 To 1000kg)**

High-capacity off-center loading load cell accurately weighs loads from 50 to 1000 kg (110.2 to 2205.0 lb) and NTEP approved. Long-term stability and durability are maintained. Load cells with potted cavities are available for improved performance in damp environments.

---

Our Price: **US\$315.00**

[See details](#)



#### **Tede-a-1260s-Single-Point-Aluminum-Load-Cell (75 To 635kg)**

This single-point, off-center loading, aluminum load cell is designed for high-capacity applications and harsh environments.

---

Our Price: **US\$325.00**

[See details](#)



#### **Tede-a-1510-Single-Point-Stainless-Steel-Load-Cell (100kg, 250kg, 500kg)**

The 1510 is a stainless steel welded-seal cell ideally suited for washdown applications. Capacities from 100 kg to 500 kg.

---

Our Price: **US\$819.00**

[See details](#)



#### **Virtual Vlc131 Aluminum Single Point (5lb To 200 Lb)**

APPLICATIONS  
bench scale

---

Contact Us For Price

# PEFORZA



[See details](#)

## Virtual Vlc132 Single Point Aluminum Load Cell (60kg To 635kg)

### APPLICATIONS

Single Point  
platform scale  
Belt Conveyor  
Bench scales  
Checkweighing  
Hopper scales

---

Our Price: **US\$147.00**



[See details](#)

## Virtual Vlc133 Single Point Aluminum Load Cell (100 To 1000kg)

### APPLICATIONS

Single Point  
platform scale  
Belt Conveyor  
Bench scales  
Checkweighing  
Hopper scales

---

Contact Us For Price



[See details](#)

## Virtual Vlc134 Single Point Aluminum Load Cell (3kg To 100kg)

### APPLICATIONS

Single Point  
platform scale  
Belt Conveyor  
Bench scales  
Checkweighing  
Hopper scales

---

Contact Us For Price



[See details](#)

#### **Virtual Vlc137s Single Point Stainless Steel (60kg To 500kg)**

##### **APPLICATIONS**

Single Point  
platform scale  
Belt Conveyor  
Bench scales  
Checkweighing  
Hopper scales

---

Contact Us For Price

## **Weighing Assemblies**

**Weigh Modules and Weighing Assemblies** are used for tank weighing, hopper weighing, conveyor scales, scale conversion. Compression weigh modules are designed to be installed under the legs of tanks, mounting lugs, or support beams of a structure. The weight that is being measured compresses the weigh module's load cell, causing a change in output signal.



[See details](#)

#### **nyload 110BHM1 Alloy Steel Weigh Module (1t To 100t)**

**Applications:** Medium to heavy-cap. horizontal tank & hopper weighing application OIML NTEP RoHS IP67 Measurement Ukraine CE.

---

Our Price: **US\$125.00**

# PEFORZA



[See details](#)

## **Anyload 110BHM2 Alloy Steel Weigh Module (1t To 100t)**

**Applications:** Medium to heavy-cap. horizontal tank & hopper weighing application OIML NTEP RoHS IP67 Measurement Ukraine CE.

---

Our Price: **US\$125.00**



[See details](#)

## **Anyload 110BHM3 Alloy Steel Tension Weigh Module (1t To 10t)**

Anyload 110BHM3 Alloy Steel Weigh Module for tension use.

---

Our Price: **US\$60.00**



[See details](#)

## **Anyload 276EHM1 Weigh Module (50ton-100ton)**

Tank & silo weighing IP67 Measurement Ukraine.

---

Our Price: **US\$501.00**

# PEFORZA



[See details](#)

## Anyload 363RSM1 Weigh Module (2t To 10t)

Tank & silo weighing RoHS CE IP68 Measurement Ukraine.

---

Our Price: **US\$940.00**



[See details](#)

## Anyload 535AHM2 Weigh Module (5t To 100t)

- ▲ Load pin integrated with shackle which is easy to use, no additional height added
- ▲ Work capacity from 5t to 100t
- ▲ Test load is 2 times of the rated capacity
- Bobbin design provides high accuracy and repeatability

---

Our Price: **US\$325.00**



[See details](#)

## Anyload 563RSM5 Stainless Steel Weigh Module (5~200kg)

**Applications:** Light-capacity tank & hopper; Wash down or corrosive application; RoHS CE Ex IP68 Measurement Ukraine.

---

Our Price: **US\$353.00**



# PEFORZA

[See details](#)



## Artech Wm-I, Sswm-I Small Tank/Hopper Weighing Module (250lb - 10000lb)

The WM-I Weighing Module is designed to utilize single ended shear beams for tank and hopper weighing. The module is available in either mild steel or stainless steel. The cell is loaded through a rod and spherical washer assembly that protects the cell from side load included errors caused by thermal expansion on the tank or hopper. The assembly is designed for use with the Artech 30310 and 30210CBM shear beams but can be provided to accommodate the Artech SS30510, which is a direct replacement for the HBM-BLC

---

Our Price: **US\$325.00**

[See details](#)



## Artech Wm-I, Sswm-I Tank Weighing Module Kit (3000lb - 40000lb)

The WM-I Weigh Module Kit Includes :

- \* 4 EA. WM-I Weight Modules\*
- \* 1 EA. SB-I Load Cell J-Box
- \* 25 Ft. 4 Conductor, 22 GA. Shielded Cable
- \* Optional Weight Indicator
- \* 3 or 4 Modules Per Kit

---

Our Price: **US\$2095.00**

[See details](#)



## Artech Wm-II, Sswm-II Tank / Hopper Weighing Module Kit (15klb - 1000klb)

The WM-II Weigh Module Kit Includes :

- 4 EA. WM-II Weight Modules\*
- 1 EA. SB-I Load Cell J-Box
- 25 Ft. 4 Conductor, 22 GA. Shielded Cable
- Optional Weight Indicator

---

Our Price: **US\$2920.00**



[See details](#)



#### **Artech Wm-Ii, Sswm-Ii Tank/Hopper Weighing Module (5klb - 250klb)**

The WM-II Weighing Module is designed to utilize double ended shear beams for tank and hopper weighing. The module is available in either mild steel or stainless steel. The cell is loaded through a collar assembly that "locks" the tank or hopper to the weigh module, thereby eliminating the need for check rods in most applications. The WM-II is designed for use with the Artech 70210 or SS70210 load cells, but can be provided to accommodate the Artech 70310, a direct replacement for the Scentroidronics 65058.

---

Our Price: **US\$295.00**

[See details](#)



#### **Artech Wm-Iii Truck/Track Weighing Module (20000lb - 200000lb)**

The WM-III Weighing Module is designed to utilize double ended shear beams for Truck and Track weighing. The weigh module is available in mild steel or stainless steel. For capacities larger than 50K, Artech machined links are highly recommended. These links are manufactured from the same alloy steel as the load cells, which helps to minimize load cell wear and maximize the strength of the entire mount. The WM-III is designed for use with the stainless or tool steel versions of the 80210 or 80310 load cells.

---

Our Price: **US\$595.00**

[See details](#)



#### **Artech Wm-Iv, Sswm-Iv Tank / Hopper Weighing Module (1000lb - 125000lb)**

The WM - IV tank / hopper weigh module uses the 70510 double ended shear beam load cell. Available in steel or stainless steel. The WM - IV is ideal for small to medium capacity weighing applications

---

Our Price: **US\$150.00**



[See details](#)



#### **Artech Wm-Vii, Sswm-Vii Tank Weighing Module Kit (300lb - 80000lb)**

The WM-VII Weigh Module Kit Includes :

- ▲ 4 EA. WM-VII Weight Modules\*
- ▲ 1 EA. SB-I Load Cell J-Box
- ▲ 25 Ft. 4 Conductor, 22 GA. Shielded Cable
- Optional Weight Indicator

---

Our Price: **US\$1540.00**

[See details](#)



#### **Artech Wm-Vii, Sswm-Vii Tension Weighing Modules (100lb - 40000lb)**

The Weigh Module VII provides a wide range of tension weighing assemblies suitable for scale conversions, process control, hopper and tank weighing. Tension loading design assures correct load alignment and is ideal for low to medium capacity hopper and tank weighing. Teflon insulation combined with a bonding strap protects the load cell from stray ground currents and electrostatic charges.

---

Our Price: **US\$149.00**

[See details](#)



#### **Fairbanks Onmicell 9104 Series Desb Tool Steel (1klb To 125klb)**

The 9104 Onmicell is a double-ended shear beam design suitable for use with high capacity tanks, bins and hoppers. This line features easy installation and self-checking capabilities. The 9104 is Factory Mutual approved for all classes, groups and divisions. It's suitable for UBC (Universal Building Code) Seismic Zone 4 applications. Available in two styles: cast stainless steel mounting assembly and a stainless steel hermetically sealed load cell; and zinc plated, cast ductile iron mounting assembly with tool steel nickel-plated load cell.

---

**Contact Us For Price**



Rice Lake Itcm - Isolated Tension Cell Mount Hardware Kits (300 To 15,000lb)

#### MOUNT ONLY - DOES NOT INCLUDE LOAD CELL

The ITCM Isolated Tension Cell Mount is a mounting assembly designed for tension mounting S-beam load cells in suspended hopper assemblies and mechanical scale conversions. The ITCM incorporates clevis and unique rod end ball joint assemblies to reduce the overall length to less than half of the traditional tension cell mounts, while providing correct load alignment. In addition, the load cell is completely electrically isolated from stray currents, a major cause of load cell failure. To complete the design, a grounding strap connects the two clevis assemblies to further guarantee safety to your load cells.

---

Our Price: US\$175.00



#### Sentronik 7140W2SSTM Weighing Assemblies Stainless Steel (250-10,000 Lb)

- \* NTEP-certified cells in 1000-10,000 lb (453.6-4535.9 kg) capacities
- \* Stainless steel
- \* Center-pivoted, tension loading design
- \* Self-checking, multi-directional movement
- \* include load cell 7140wss

---

Our Price: US\$995.00

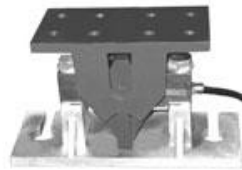


#### Sentronik 7140W2TM Weighing Assemblies Alloy Steel (250-10,000 Lb)

- \* NTEP-certified cells in 1000-10,000 lb (453.6-4535.9 kg) capacities
- \* Zinc plated mild steel
- \* Center-pivoted, tension loading design
- \* Self-checking, multi-directional movement

---

Our Price: US\$995.00



[See details](#)

**Sentronik 7160TM Cast Iron Weigh Module (10 To 75k Lb)**

Truck scale mount

Our Price: US\$524.00



[See details](#)

**Sentronik 7164TM Weighing Module With Load Cell 5K 10K 20K 30K 50K 60K 100K 150K 200K Lb**

The Sentronik 7164TM Weighing Module is designed to utilize double ended shear beams for tank and hopper weighing. The module is available in either mild steel or stainless steel. The cell is loaded through a collar assembly that "locks" the tank or hopper to the weigh module, thereby eliminating the need for check rods in most applications.

---

Our Price: **US\$987.00**



[See details](#)

**Load cell  
Not Included**

**Sentronik 7164TM0 Weighing Module 5K 10K 20K 30K 50K 60K 100K 150K 200K Lb**

The Sentronik 7164TM Weighing Module is designed to utilize double ended shear beams for tank and hopper weighing. The module is available in either mild steel or stainless steel. The cell is loaded through a collar assembly that "locks" the tank or hopper to the weigh module, thereby eliminating the need for check rods in most applications.

---

Our Price: **US\$987.00**



[See details](#)

#### Tank-Weigh-Mounting-7140wsstm-Stainless-Steel-Sentronik

**Sentronik 7140wsstm tank weigh mounting module.** Lower capacity tank and vessel weighing, *for process control and batching*. Single Module (Includes Stainless steel load cell)

---

Our Price: **US\$932.00**

## Weight Indicator

The **weight indicator**, you are known as indicators of *weighing*, are devices that allow you to give visual aspect and compressive to your weighing systems, the so-called screens; **weight indicator** can consist of technology LED or LCD ( which vary from digits in decimal), are developed under knowledge of computer programming, and electronics, making the reading of the various *weighing systems* (**floor scales**, *scale hopper type*, truck scales, etc), the **weight indicator** make compressible and fast, get the *weight* of the bodies.

Weight indicator: they are definitely a technological tool, which include certain features that will help you choose the best option.

**Weight indicator** are adaptable: created with high level of adaptability to different *weighing systems*; however, there is great variety, choose the most personalize it to your requirements. Sometimes there are scales that require a weight indicator with very special characteristics, such as the fact that anti-coup, humidity and very stable.

Capacity: **weight indicator**, interact directly with the *load cells* which is of importance, that take into account how many may have interaction.

Resistance: depending on the nature of your projects or your company, there may be staff or external conditions that might affect the performance of your *weight indicator*, due to these conditions, global suppliers, have developed **weight indicator** with high level of resistance.

Materials: In general, to ensure a long life in your *weight indicator*, manufacturers use reinforcements in these devices in aluminum and stainless steel.

Interface: weight indicator, has various means that act as an interface, such as screen remote, usb connectivity-pcs, printers, among others.

Variety of possibilities. The industry of the **weight indicator** has been characterized as offering an experience to its customers, each day the more surprising , through intelligent software, customers can perform multiple tasks with the *weight indicator*, which is based not only on the experience of viewing through screens LCD or LED but in a set of multiple tasks.

# PEFORZA

## PRODUCTS



[See details](#)

### 1500-Weighing-Indicator-Sentronik

**Sentronik SEN 1500 weighing indicator** adopts high anti-jamming **Single-chip microprocessor** and high precision A/D conversion technology, widely applied in platform scale, platform balance and other weighing applications. Features: kg/lb one key switch, total, upper and lower limit, animal scale, RS232 communication.

---

Contact Us For Price



[See details](#)

### 400es-Digital-Weigh-Indicator-Transcell

**Transcell TI-400ES digital weigh indicator** for floor scales and platform scales.

Features:

- **Divisions-** NTEP approved for 5,000 Divisions.
  - **Enclosure-** Heavy duty stainless steel NEMA 4X enclosure.
  - **Serial Port-** Full Duplex RS-232 Serial Port - demand or continuous.
-

# PERFORZA

[See details](#)



## 500bw-Digital-Weigh-Indicator-Transcell

**Transcell TI-500BW digital weigh indicator** for floor scales and platform scales.

### Main Features:

- ▲ **Display**- 5,000 Divisions.
- ▲ **Battery Operated**- Configurable for either 6-Volt lead acid battery or 6 "C" cell disposable batteries. Specify type at time of order.
- **Continuous Power**- AC adapter included for continuous power operation and recharging.

---

Contact Us For Price

[See details](#)



## 5500-Neptune-Digital-Weigh-Indicator-Transcell

The **Transcell NEPTUNE-5500 digital weigh indicator** is built tough to meet the demanding requirements of *harsh conditions* for *tough washdown environments* and *corrosive chemical industries*. Large easy-to-read, **bright green display**, one inch tall digits ensure maximize operator visibility. Adds tare and net/gross functionality.

---



**PEFORZA**

**PEFORZA**