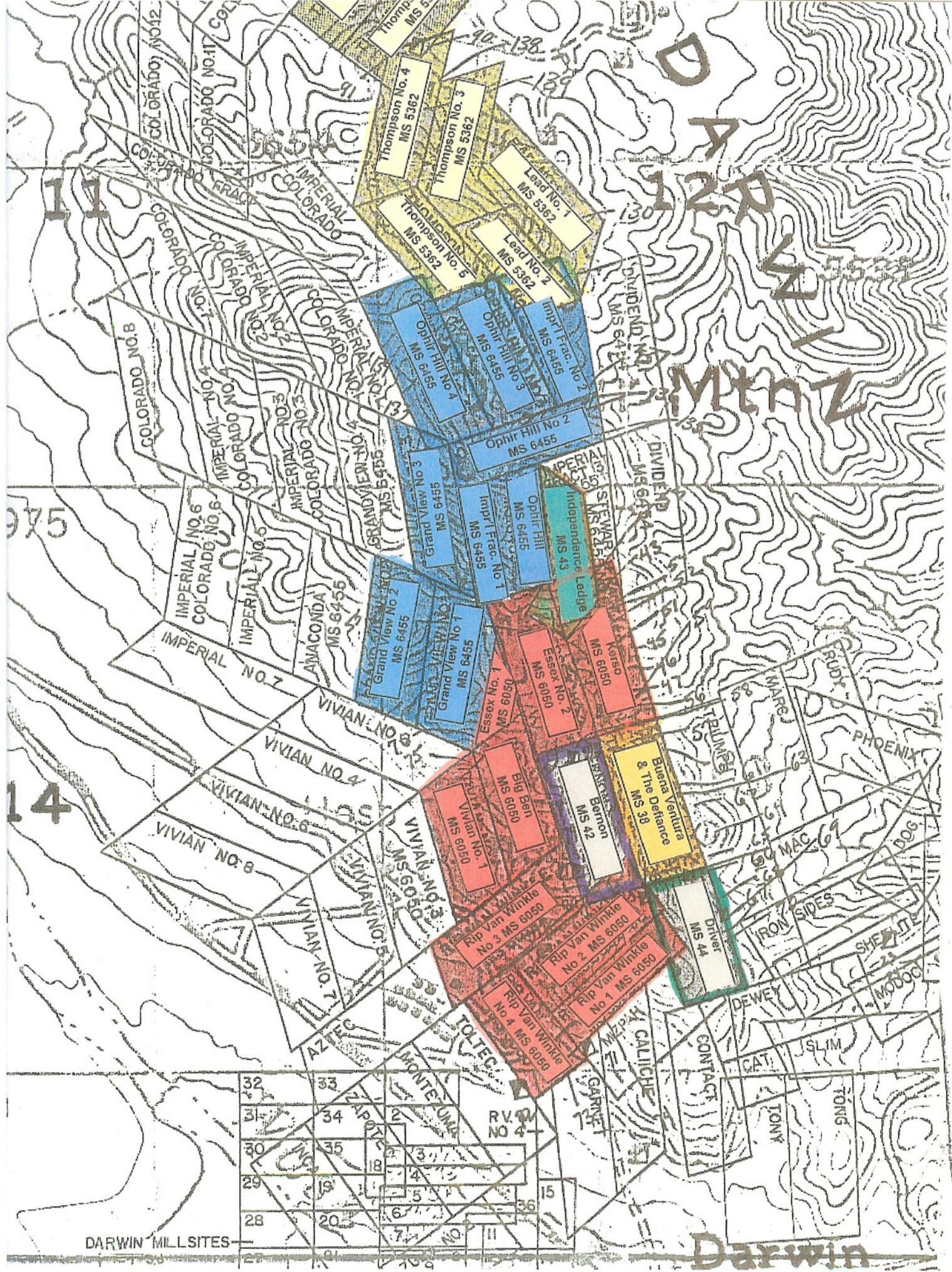


The Following Described Patented Mining Claims Located in Sections 1, 2, 11 12 13 and 14, Township 19 South, Range 40 East and Sections 18, 30 and 32, Township 19 South, Range 41 East, Mount Diablo Meridian, Unknown Mining District, Inyo County, State of California:

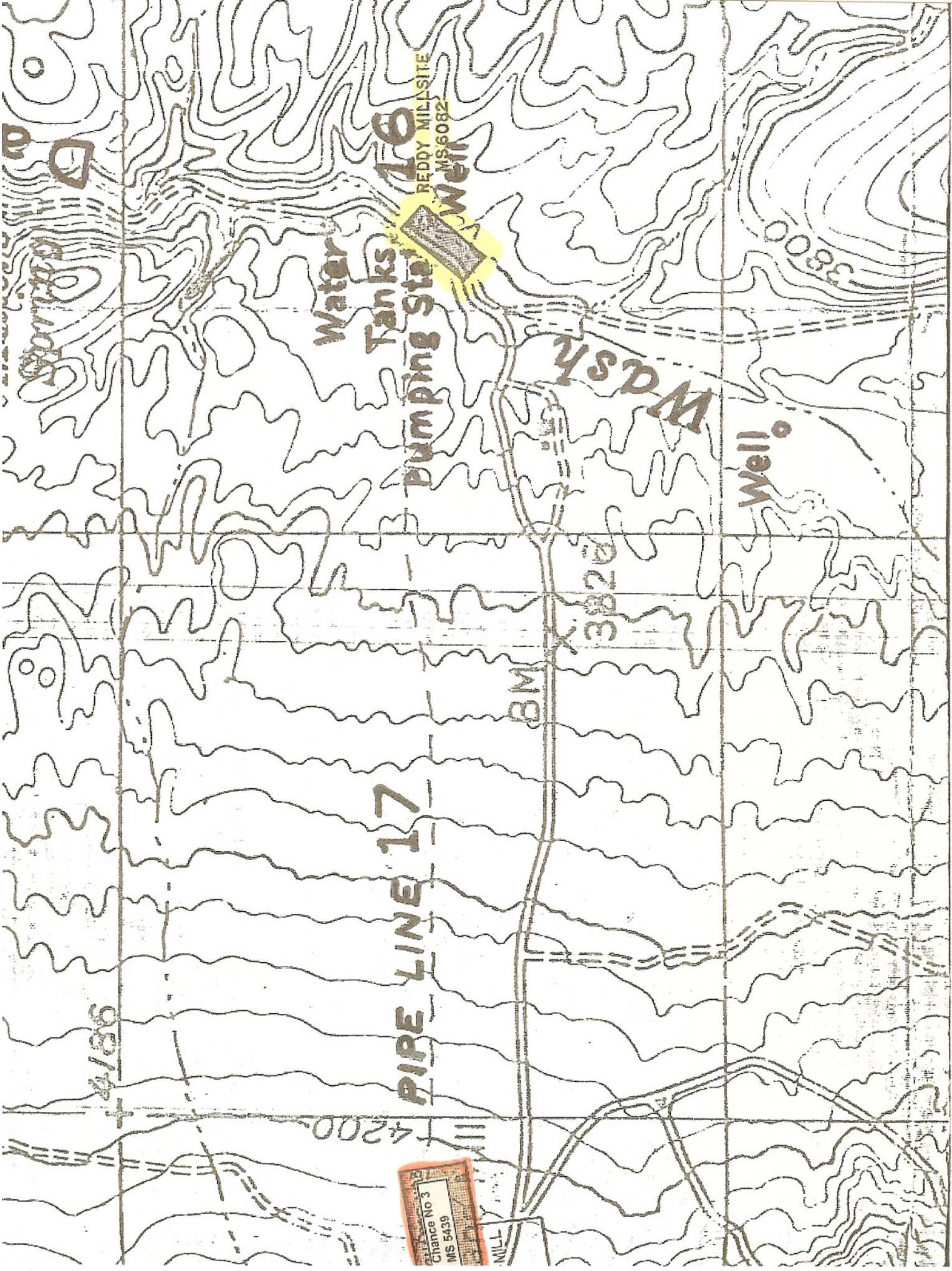
	<u>Patent Number</u>	<u>Claim Name</u>	<u>Mineral Survey No.</u>	<u>Book/ Page</u>	<u>Owner of Record</u>
1	779068	New York	5362	35/344	Darwin Project, LLC
2	779068	Rayman	5362	35/344	Darwin Project, LLC
3	779068	Virginia	5362	35/344	Darwin Project, LLC
4	779068	Michigan	5362	35/344	Darwin Project, LLC
5	779068	Lone Star	5362	35/344	Darwin Project, LLC
6	779068	Ohio	5362	35/344	Darwin Project, LLC
7	779068	Lucky Jim	5362	35/344	Darwin Project, LLC
8	779068	Vermont	5362	35/344	Darwin Project, LLC
9	779068	Defender	5362	35/344	Darwin Project, LLC
10	779068	Lucky Jim Ext.	5362	35/344	Darwin Project, LLC
11	779068	Anthony	5362	35/344	Darwin Project, LLC
12	779068	Thompson No. 1	5362	35/344	Darwin Project, LLC
13	779068	Thompson No. 2	5362	35/344	Darwin Project, LLC
14	779068	Thompson No. 3	5362	35/344	Darwin Project, LLC
15	779068	Thompson No. 4	5362	35/344	Darwin Project, LLC
16	779068	Thompson No. 5	5362	35/344	Darwin Project, LLC
17	779068	Lead No. 1	5362	35/344	Darwin Project, LLC
18	779068	Lead No.2	5362	35/344	Darwin Project, LLC
19	04-68-0210	Ophir Hill	6455	181/555	Darwin Project, LLC
20	04-68-0210	Ophir Hill No. 2	6455	181/555	Darwin Project, LLC
21	04-68-0210	Ophir Hill No. 3	6455	181/555	Darwin Project, LLC
22	04-68-0210	Ophir Hill No. 4	6455	181/555	Darwin Project, LLC
23	04-68-0210	Grand View No. 1	6455	181/555	Darwin Project, LLC
24	04-68-0210	Grand View No. 2	6455	181/555	Darwin Project, LLC
25	04-68-0210	Grand View No. 3	6455	181/555	Darwin Project, LLC
26	04-68-0210	Imperial Fraction No. 1	6455	181/555	Darwin Project, LLC
27	04-68-0210	Imperial Fraction No. 2	6455	181/555	Darwin Project, LLC
28	1055603	April Fool	6047	27/347	Darwin Project, LLC
29	1055603	April Fool No. 1	6047	27/347	Darwin Project, LLC
30	1055603	April Fool No. 3	6047	27/347	Darwin Project, LLC
31	1055603	Esperanza	6047	27/347	Darwin Project, LLC
32	1055603	Esperanza No. 1	6047	27/347	Darwin Project, LLC
33	1055603	June Bug	6047	27/347	Darwin Project, LLC
34	1055604	Last Chance	6051	27/345	Darwin Project, LLC
35	1055604	Last Chance No. 3	5439	27/345	Darwin Project, LLC
36	1055605	Kerso	6050	27/351	Darwin Project, LLC
37	1055605	Essex No. 1	6050	27/351	Darwin Project, LLC
38	1055605	Essex No. 2	6050	27/351	Darwin Project, LLC
39	1055605	Big Ben	6050	27/351	Darwin Project, LLC
40	1055605	Rip Van Winkle No. 1	6050	27/351	Darwin Project, LLC
41	1055605	Rip Van Winkle No. 2	6050	27/351	Darwin Project, LLC
42	1055605	Rip Van Winkle No. 3	6050	27/351	Darwin Project, LLC
43	1055605	Rip Van Winkle No. 4	6050	27/351	Darwin Project, LLC
44	1055605	Vivian No. 1	6050	27/351	Darwin Project, LLC
45	1055605	Major Butt	6051	27/345	Darwin Project, LLC
46	855888	Carbonate	5439	Not Available	Darwin Project, LLC
47	855888	Lucky Bill	5439	Not Available	Darwin Project, LLC
48	855888	Wedge	5439	Not Available	Darwin Project, LLC
49	855888	10	5439	Not Available	Darwin Project, LLC
50	855888	Liberty	5439	Not Available	Darwin Project, LLC
51	19500	Buena Ventura & the Defiance	38	U/292	Darwin Project, LLC
52	20314	Bernon	42	U/401	Darwin Project, LLC
53	27815	Last Chance No. 2	3341	5/33	Darwin Project, LLC
54	27816	South West Mine	3342	5/38	Darwin Project, LLC
55	29613	Driver	44	A-1/553	Darwin Project, LLC
56	30003	Independence Ledge	43	B/187	Darwin Project, LLC
57	Not Available	Columbia	6046	27/343	Darwin Project, LLC
58	1064099	Reddy Millsite	6082	29/51	Darwin Project, LLC

(Far Right-Water Pumping Station)



DARWIN MILL SITES

Darwin



Water
Tanks

Pumping Station

Well

Well

PIPE LINE 17

WASH

REDDY MILL SITE
MS 6082

Chance No 3
MS 5439

MILL

4186

4200

BM

3820

3800

Da

629

4400

WINE

4400

