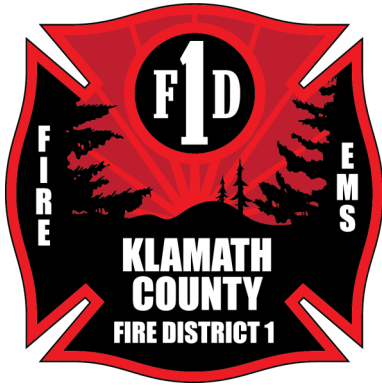


Klamath County Fire District 1



2025 Annual Report





VALUES

Customer Service · Integrity · Teamwork
Sense of Family · Fiscal Responsibility

MISSION

At Klamath County Fire District 1, we are devoted to safeguarding the lives and property of our community, visitors and neighbors by providing professional emergency services with compassion, courtesy, integrity and fiscal responsibility.

COMMUNITY

On behalf of the dedicated men and women of Klamath County Fire District 1, it is my privilege to present our 2025 Annual Report. This report reflects another year of unwavering commitment to emergency response, community safety, and public service excellence across to the citizens we serve in Klamath County.

In 2025, we continued to see a high demand for our services, driven largely by responses for structure fire, emergency medical services and wildland urban interface fires. These demands reaffirmed the critical importance of preparedness, interagency collaboration, and ongoing investment in training, equipment, and personnel.

Our Department remains focused on:

- High-quality emergency response services: exceeding the expectations of the citizens and visitors of Klamath County.
- Community risk reduction: working to prevent emergencies before they occur.
- Workforce development: enhancing skills, safety, and resilience of our firefighters and support teams.
- Strategic planning and fiscal stewardship: ensuring the District remains poised to meet both current and future community needs.



The successes of this past year would not have been possible without the continued support of our Board of Directors, the trust of the citizens we serve, and the dedication of each member of our District. We remain committed to safeguarding lives, property, and the quality of life throughout Klamath County.

Brent Knutson
Fire Chief

The Organization

Klamath County Fire District 1 is considered a Special District and is governed by a five person, elected Board of Directors, all of which must live within the boundaries of the District. The Board is responsible to represent the citizens of the District and to set the policies that determine how the District functions. The Board employs the Fire Chief, who is the CEO of the organization and is responsible to assist the Board in their duties and to implement the policies of the Board.

BOARD OF DIRECTORS CHANGES 2025



The terms of two Directors ended in June 2025. Dennis Thomas and Ernie Palmer served the District for 12 and 8 years, respectively. Their commitment to the Klamath Falls community and to the success of Fire District 1 was remarkable and their service highly valued.

Nick Randall, Mike Kuntz and Steve Leslie were sworn in as new Directors effective July 1, 2025, and bring an extensive history of fire service and community experience to our Board of Directors.

Nick Randall - Position 1

Director Randall, currently self-employed, worked in the fire service as a volunteer prior to being hired at KCFD1, where he served as a firefighter for 14 years. Director Randall moved to Klamath Falls in 2010.

Mike Kuntz - Position 4

Director Kuntz is a retired fire Captain with over 32 years in fire service, most recently at Applegate Rural Fire Protection District and Williams Rural Fire Protection District, where he served as Fire Chief. Director Kuntz made the move to Klamath Falls in 2022.

Steve Leslie - Position 5 (filled remainder of a previous vacancy)

Director Leslie retired from KCFD1 in 2025 after 34 years of serving as a firefighter and Captain. Thirty years were served at KCFD1, with a concurrent career at the Klamath Falls Sheriff's office. Director Leslie was born and raised in the Klamath Falls area.

Board President Gloria Storey and Vice-President Mike Jones continue to fill the remaining two Board positions.

Administration

The Administrative Services Team oversees the District's \$25,431,991 annual budget and provides executive oversight of the financial management, human resources, information technology, emergency medical billing, strategic planning, contracting, employee wellness, and office administration of the Department. The team works cooperatively with internal and external stakeholders to ensure professional business services are provided and administered.

Chief Officers:

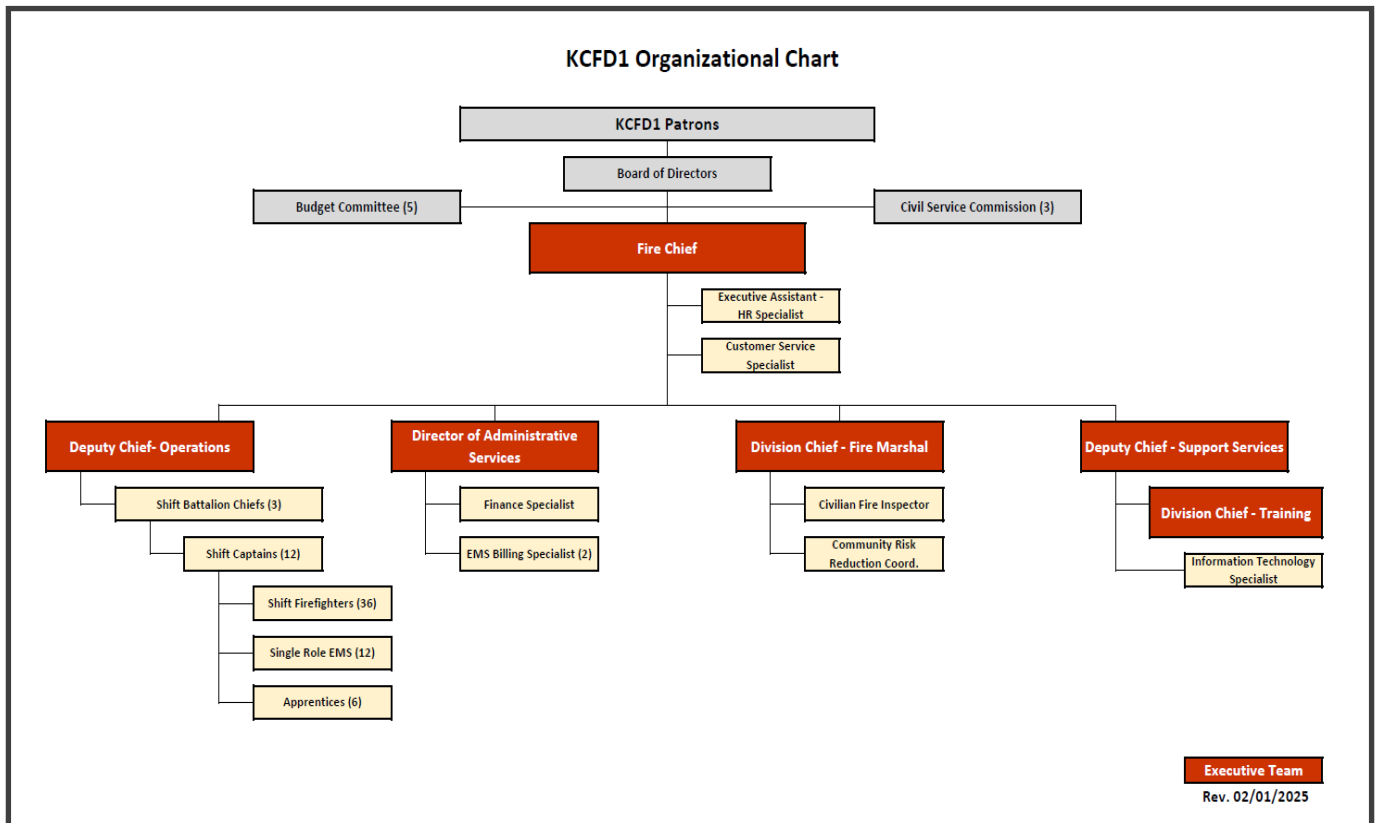
- Brent Knutson - Fire Chief (Interim)/Deputy Chief of Operations (4 years)
- Matt Hitchcock - Deputy Chief Support Services (8 years)
- Chad Tramp - Division Chief Fire Marshal (21 years)
- Gary Denney - Division Chief Training (19 years)

Administrative Staff:

- Phil Hull, Director of Administrative Services (25 years)
- Celeste Aldinger - Information Technology Administrator (20 years)
- Nicole Hirschbock - EMS Senior Billing Specialist (12 years)
- Debbie Fleming - Customer Service Representative (7 years)
- Jade Cervantes - EMS Senior Billing Specialist (6 years)
- Cassy Harsch - Finance Specialist (3 years)
- Erika Hermann - Human Resources/Administrative Assistant (6 months)

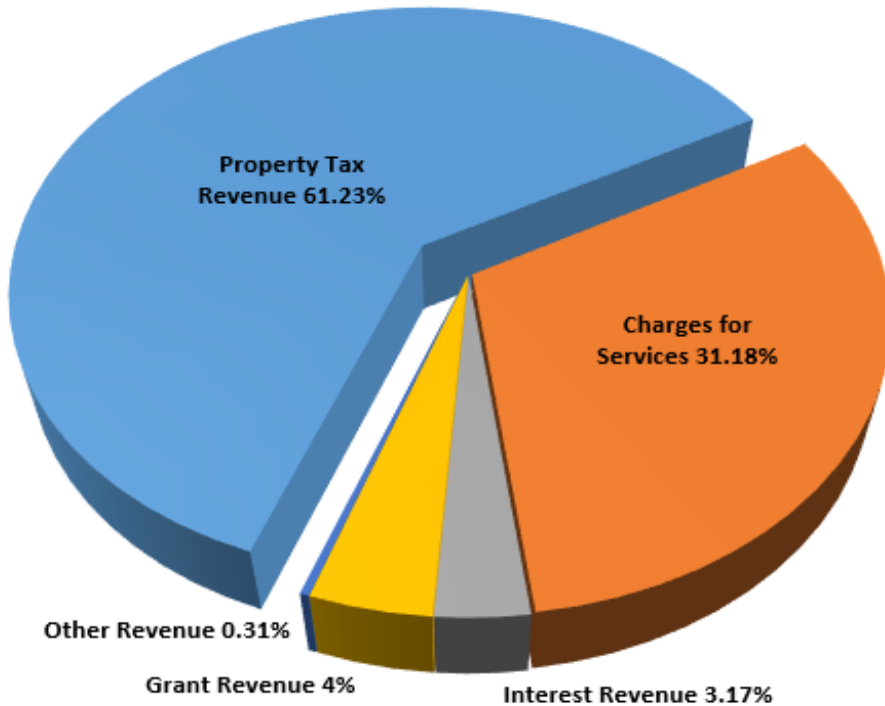


A KCFD1 crew joined an OSFM conflagration strike team in response to a declared State of Emergency in Burns, Oregon, March 2025.

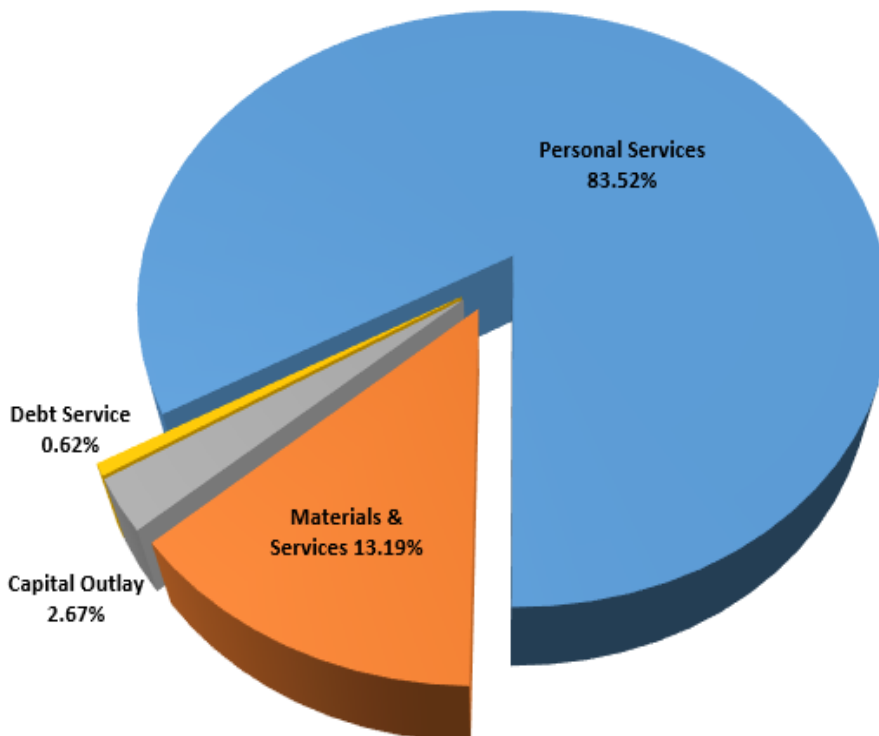


2024-2025 Financial Review

2024-2025 Revenue - General Fund



2024-2025 Expenditures - General Fund



AREA SERVED

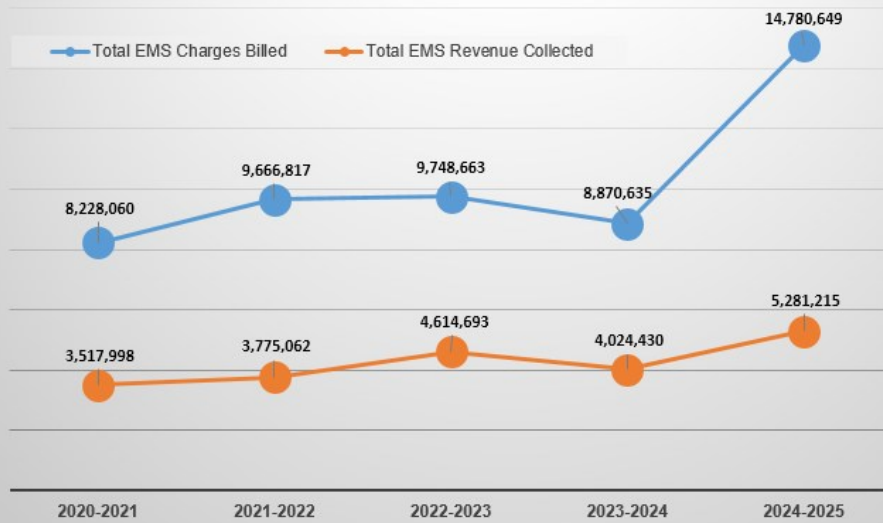
KCFD1 serves a population of **60,000 permanent residents** within a 490 square mile ambulance service area and 200 square mile fire district. In the heart of the District sits the City of Klamath Falls, which is the largest city in Klamath County and is home to 48,000 residents living within a 20 square mile urban growth boundary. The remaining residents are scattered throughout rural areas.

The District's response area consists of a diverse geography and climate. The basin's elevation is 4,100 feet and is surrounded by mountains reaching 6,525 feet. The majority of this area is classified as either wildland or wildland urban interface.

TAX RATE

KCFD1's operating revenue is primarily from property taxes, and charges for services such as ambulance transports. **KCFD1's permanent tax rate is \$2.8822 per \$1,000 of assessed property value.**

EMS Charges Billed vs. Revenue Collected



KCFD1 remains diligent in seeking grant opportunities in today's economy. Grant funds received over the last several years were designated to the District's Apprenticeship Program, emergency response staffing, apparatus, training, PPE, equipment and supplies, pandemic resources, safety and security, energy efficiency, and community risk reduction staff and equipment.

2024 Employee Award Winners



BC Erick Bishop, Captain Dana Nelson, Captain Brandon Friend, and Paramedic Darren Healy were recognized at the Employee Awards Dinner for their significant contributions to the Department in 2024.

A special recognition ceremony was held in December to formally recognize firefighters, paramedics and EMTs for their outstanding performance during a November structure fire where their actions directly contributed to saving a life.

Year in Review

RECRUITMENT

DEPUTY CHIEF OF SUPPORT SERVICES

In 2025, DC Matt Hitchcock transferred from Deputy Chief of Operations to a newly formed position of Deputy Chief of Support Services.



DEPUTY CHIEF OF OPERATIONS

In April, a hiring process was conducted for the Deputy Chief of Operations vacancy, resulting in the promotion of Division Chief of Training, Brent Knutson, to this position. The Deputy Chief of Operations position is responsible for the daily oversight of all emergency response actions in the District.

DIVISION CHIEF OF TRAINING

The promotion of DC Knutson left a vacancy in the position of Division Chief of Training and a hiring process in July resulted in the promotion of Captain Gary Denney to Division Chief of Training. DC Denney is responsible for the Training Division including strategic planning, operational readiness, and daily oversight of all District training.



CAPTAIN'S PROMOTION

Every two years, a Captain's Promotional Process is held and this year's process tested several of the District's seasoned firefighters looking to promote. The resulting list yielded two outstanding selections to-date, Captains Brandon Friend and Jeremy Valdez.



FIRE CHIEF

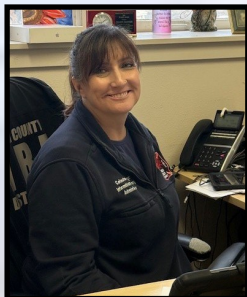
Fire Chief Greg Davis retired from the District in August after five years of dedicated service. DC Brent Knutson was appointed by the Board of Directors to act as Interim Fire Chief until a new Fire Chief could be hired. The initial District recruitment process was unsuccessful and a third party recruitment agency, Western Fire Chief's Association was hired. In January 2026, Brent Knutson was appointed by the Board of Directors to officially serve as the new KCFD1 Fire Chief.

BATTALION CHIEF HIRING LIST

The year ended with the posting of an in-house Battalion Chief Promotional Process. The three employees currently in the BC positions have been with the District for over 24 years each and at least one retirement is planned for 2026. A Battalion Chief hiring list will be posted in February 2026.

COMMUNICATION SYSTEMS

INFORMATION TECHNOLOGY



Having a dedicated Information Technology Administrator is essential to maintaining the District’s emergency response infrastructure. In 2025, Celeste Aldinger—who has served the District since 2005—was promoted from IT Specialist to Information Technology Administrator. This position ensures the stable and efficient operation of the District’s technology and communication systems, supports public safety systems, and manages emergency operations data reporting. It also plays a vital role in protecting District technology, enabling rapid incident response, and ensuring continuity of service to the community.

TYLER COMPUTER OPERATED DISPATCH SYSTEM

The District assisted Klamath County 911 through the transition from EIS to Tyler CAD. The new system increases functionality and allows for more customization. The two agencies continue to iron out the bugs and these processes will continue into 2026.

KLAMATH COUNTY RADIO COMMUNICATIONS SYSTEM

Representatives from several Klamath County fire departments met over several months to outline a new radio channel plan that was implemented county wide. The reprogramming project unified the channel plan and associated programming for all Klamath County departments. The \$5,000 cost of the project was reimbursed through a State of Oregon Title III grant.

NERIS

NERIS (National Emergency Response Information System) is a unified federal reporting platform designed to replace legacy reporting systems and standardize data across agencies. The District shifted to NERIS to meet new national compliance requirements and to ensure District incident data integrates cleanly with state and federal partners. The system offers improved analytics, streamlined documentation, and better interoperability, which should enhance both operational awareness and long-term planning. While there were some internal transitions and trainings, the platform itself was provided at no additional licensing expense to the District.

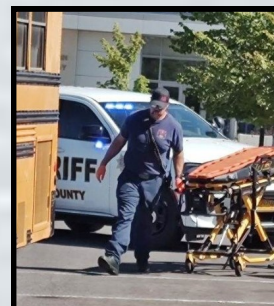
EMERGENCY MEDICAL SERVICES

PS TRAX



Recognizing a need for greater accountability of expendable medical supplies, the District implemented a new system called PS Trax. This system accounts for the supplies used daily on District ambulances and engines and eliminates the need for hand counting supply inventory.

The implementation was led by Paramedic Renee Du Mont and was paid for by Stryker Medical.



VEHICLES and APPARATUS

NEW AMBULANCE

The District took receipt of a remounted ambulance now assigned to Station 1. The unit features a refurbished passenger compartment on a new chassis.

TYPE 3 BRUSH ENGINE

KCFD1 was awarded a new Type 3 wildland urban interface engine by the Oregon State Fire Marshal's office. This engine is capable of responding to any emergency from a medical call to a wildfire, and will be used by the District as a front line apparatus out of Station 4. The in-service was led by Captain Cole Van Essen and comes with a full complement of tools to mitigate a wide range of emergency scenarios.



VEHICLE MAINTENANCE

In pursuit of consistent vehicle and apparatus maintenance and repair, the District signed an agreement with Klamath County Public Works to manage the District's light duty fleet. This program will provide greater oversight and quicker turnaround times for vehicles in need of service. The goal is to eventually expand this program to include maintenance and repairs to the larger apparatus in the District's fleet.

FACILITIES

STATION 1 GENERATOR

Fire stations require reliable backup power in the event of an outage. The generator at Station 1 was identified as in need of replacement and was original to the building. The project was managed by Battalion Chief Erick Bishop and yielded a brand new generator capable of supplying the facility with all power needs in time of crisis.



GYM EQUIPMENT

KCFD1 and first responders take fitness seriously as it is necessary to stay in top physical condition for the job they are required to perform. Firefighter Treyson Robbins led the project to update exercise equipment with the purchase of new step mills, treadmills, and other equipment. The investment promises to deliver long-lasting, durable equipment for on duty responders in District's five fire station facilities.

JANITORIAL SUPPLY SERVICES

The District selected a new single vendor for cleaning supplies. The change applies to all District facilities and will save money by streamlining products and eliminating the need for recurring refill purchases from a variety of vendors. New appliances and supplies for daily cleaning needs were provided.

2025 Statistics & Trends

Major Incident Types 2021 through 2025

Incident Type	2021	2022	2023	2024	2025
Fire	143	154	170	205	220
Overpressure Rupture, Explosion, Overheat, No Fire	2	1	3	7	3
Rescue and EMS Incidents	7189	6941	6806	7497	6920
Hazardous Condition, No Fire	30	54	58	79	119
Service Call	991	929	984	911	873
Good Intent Call	541	582	757	934	1003
False Alarm and False Call	162	186	207	207	203
Severe Weather and Natural Disaster	0	0	1	0	1
Special Incident Type	6	5	7	7	4
Grand Total	9064	8852	8993	9847	9346

Fire Response by Type	# of Responses
Structure Fire	53
Fire in Mobile Property Used as a Fixed Structure	7
Vehicle Fire	28
Natural Vegetation Fire	73
Outside Rubbish Fire	45
Other Fires	14
Total	220

Medical Response by Type	# of Responses
Medical Assist (Assist EMS Crew)	83
Emergency Medical Service	6581
Motor Vehicle Accident	250
Extrication	1
Other Rescue & EMS	5
Total	6920

Service Response by Type	# of Responses
Water Problem	27
Public Service Assistance	42
Assist Police or Other Governmental Agency	44
Life Assist	605
Unauthorized Burning/Fire	77
Other Service	78
Total	873

In 2025, KCFD1 responded to more than 9,000 incidents across our community.

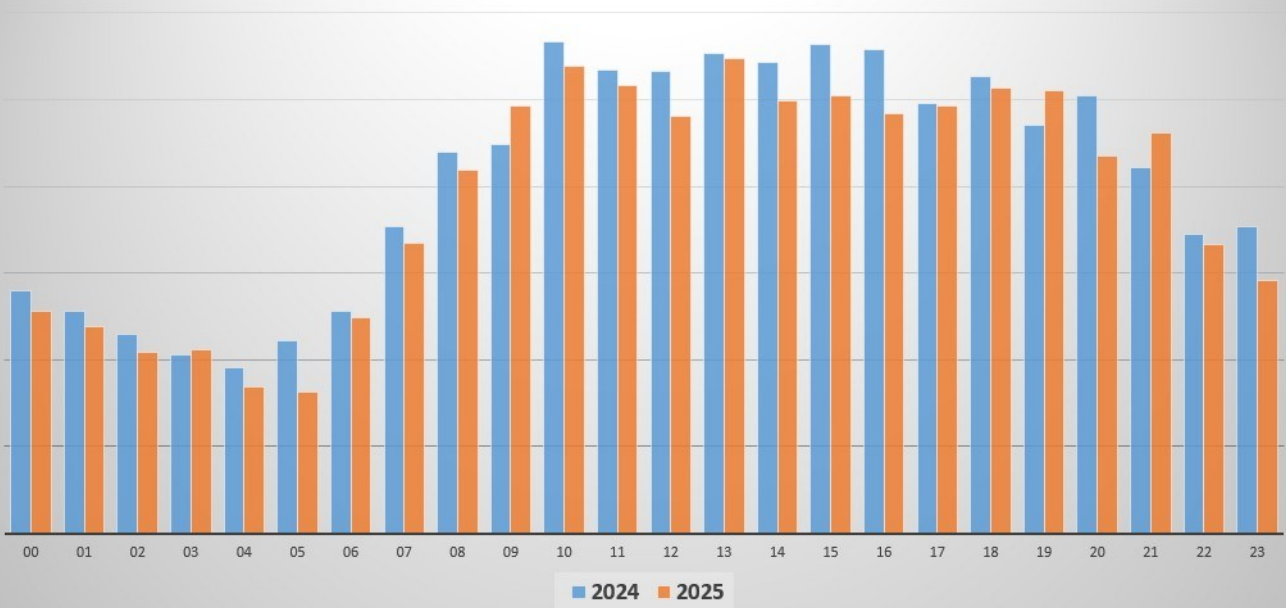
The majority of these calls were emergency medical in nature, with our EMS personnel providing critical, life saving care to residents and visitors throughout our ambulance service area. Our firefighters also managed a wide range of fire incidents, including wildland, wildland urban interface, and structure fires.

Through rapid response, coordinated teamwork, and decisive action, KCFD1 personnel prevented the loss of life and protected millions of dollars in property.





Call Volume by Hour of the Day



This chart illustrates call volume by hour of the day for calendar years 2024 and 2025. Call activity remains lowest during the overnight and early morning hours, begins increasing around 0700, and peaks between approximately 1000 and 1700. Both years show similar hourly patterns with only moderate variation. The data highlights that the District responses are most concentrated during daytime hours, reflecting higher community activity levels during those periods.

Training & Certification

ACADEMIES

The Training Division of Klamath County Fire District 1 experienced a highly productive year focused on workforce development, operational readiness, and professional excellence in support of safe, consistent, and effective emergency service delivery to the community.

During 2025, the District delivered multiple structured academy programs designed to support personnel entering service with the District, including:

- One five-week Firefighter Academy, focused on foundational fire-ground operations, District procedures, safety culture, and performance expectations.
- Two two-week EMS Academies, emphasizing emergency medical operations and District protocols and procedures.

A total of seven (7) personnel successfully completed these academies during 2025.



TRAINING HOURS

The Training Division recorded more than 14,650 cumulative hours of training in 2025.

This training encompassed a broad range of essential subjects, including:

- Fire suppression operations
- Emergency Medical Services (EMS)
- Pump operations and hydraulics
- Wildland fire operations
- Vehicle extrication
- Technical rescue
- OSHA and compliance training

In addition to internal training, District personnel attended numerous outside and regional training programs, expanding professional development and maintaining regulatory and operational compliance. These opportunities included Incident Command System (ICS) courses, Fire Instructor training, Fire Investigator training, Blue Card Instructor training, and wildland fire training.



PARTNERSHIPS & LOCAL READINESS



Klamath County Fire District 1 also hosted several high-value training programs within the District, strengthening partnerships and enhancing local readiness. These included:

- Leadership and ethics training presented by ETHOS
- Pediatric resuscitation training conducted by AirLink
- Assisted Living Facility training in coordination with the Oregon Health Authority
- Fire Officer I Academy
- Case reviews conducted with the District's physician advisor, Dr. Joel Klas.

ADMINISTRATIVE & OPERATIONAL PROJECTS

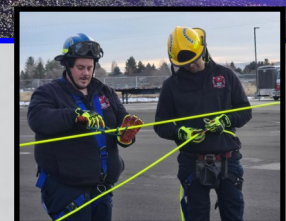
Throughout 2025, the Training Division completed multiple critical administrative and operational projects to ensure District programs remained current and aligned with best practices. These projects included:

- Comprehensive updates to EMS Standing Orders
- Revisions to Standard Operating Guidelines (SOGs)
- Updates to Program Management Plans (PMP)
- Revisions to Individual Performance Standards (IPS)
- Revisions to Engine Company Performance Standards (ECPS)
- Revisions to the Officer Development Program
- Revisions to the Field Training Coach (FTC) Program



Personnel also continued to maintain Blue Card Incident Command training and compliance, reinforcing a consistent command structure, common operating language, and effective incident management across all emergency responses.

Collectively, these training initiatives and system updates demonstrate KCFD1's ongoing commitment to firefighter safety, professional development, clinical excellence, and the continuous improvement of emergency services provided to the citizens of Klamath County.



Fire Prevention Division

YEAR IN REVIEW

A wide range of inspections, reviews, and community-focused initiatives aimed at reducing risk and improving public safety were performed.

- ⇒ **Total inspections conducted:** 400
- ⇒ **Smoke detector installations:** 5
- ⇒ **Plan reviews completed:** 50

These efforts support both new and existing developments by ensuring fire protection systems and building designs meet adopted codes and standards.

FIRE & LIFE SAFETY—COMMERCIAL ACTIVITIES

In 2025, the Prevention Division continued its focus on ensuring compliance with fire and life safety codes across commercial occupancies within the District. A total of **1,278 fire and life safety systems** were monitored for compliance during the reporting period.

- ⇒ **86.49%** of monitored systems were found to be fully compliant with no deficiencies noted.
- ⇒ **13.51%** of systems exhibited deficiencies requiring repair or corrective action to meet applicable code requirements.

These findings reflect a strong overall compliance rate while identifying targeted opportunities for improvement through enforcement, education, and follow-up inspections.

PUBLIC EDUCATION & COMMUNITY OUTREACH

Public education remained a cornerstone of the Department's prevention strategy, with personnel engaging residents through hands-on programs and public events.

- ⇒ **Child safety seat installations/checks:** 15
- ⇒ **Seatbelt Diversion Program participants:** 20
- ⇒ **Fire extinguisher training participants:** 35
- ⇒ **Public event attendance reached approximately 2,775 citizens.**

RADIO MEDIA SAFETY CAMPAIGN

This year's radio campaign reflects a strong return on investment by effectively promoting fire and life safety messaging on behalf of Klamath County Fire District 1.

The District plans to expand broadcasts in 2026 expanding the District's reach to more citizens, reinforcing key safety messages throughout the community.

THIS GRASS FIRE WAS STARTED BY FIREWORKS, PLACING NEARBY HOMES IN DANGER.

KCFD1 places a heavy emphasis on public education for the July 4th holiday.



Community Risk Reduction

The Community Risk Reduction (CRR) Program was extremely successful in 2025, structured to reduce the area's wildfire risk through mitigation planning. CRR services were provided to the community at no cost and included defensible space assessment recommendations, hazard assessments, and on the ground work. KCFD1's CRR team also helped integrate wildfire mitigation into the development planning process.

2025 efforts were guided by 2024 year-end reporting and analysis, provided by Program Coordinator, Randall Baley. Baley's analysis allowed the Department to align retention strategies with identified risks and community needs. These data-driven efforts support long-term reductions in fire incidence, injuries, and property loss. KCFD1 now has three trailers and one chipper assigned to the CRR program.

AN OSFM COMMUNITY WILDFIRE RISK REDUCTION GRANT

funded two CRR Technician positions dedicated to the Prevention Division. With the CRR program staffed with a Program Coordinator and two Technicians, the following was achieved:

- ⇒ Cleared and disposed of 66,730 lbs (33.36 tons) of material.
- ⇒ An additional 757,600 lbs (378.8 tons) of material was cleared using a chipper.
- ⇒ Engaged 132 landowners on 286.61 acres in CRR assessments, trailer or chipper use, or a combination thereof.
- ⇒ Seed planted a firewood program from 8" and more of fire wood fuels from projects; stock-piled 12-15 cords of wood for future use.
- ⇒ Defensible space inspections/assessments increased to 118 vs. 30 in 2024.



WILDFIRE RESILIENCY PROJECT

The CRR Program was fully dependent upon grant funding during the year 2025. The grant, received in March 2024, and designed with a multi-phase approach, was established with the goals of creating seven Firewise communities and to safely dispose of over 2 million lbs of hazardous fuels. Ultimately, improving the resiliency of the community by reducing the impacts of wildfire.

Associated equipment. Two 7 x 12 dump trailers were purchased with funds from this grant.



KAGO HILL DOOR-TO-DOOR CAMPAIGN

During this campaign, CRR program staff completed 23 defensible space assessments and lined out multiple properties to utilize the trailer and chipper programs, along with mitigation assistance from the CRR Technicians.

FIREWISE USA

The National Fire Protection Association, Firewise USA, teaches people how to adapt to living with wildfire and encourages neighbors to work together to prevent losses, taking action and ownership in preparing and protecting their homes against the threat of wildfire.

Throughout 2025, KCFD1 actively supported multiple homeowners associations and community groups in their pursuit of Firewise USA designation. Department personnel provided education, technical assistance, and coordination to help communities understand and implement Firewise principles, including community risk assessments, defensible space and fuels reduction practices, resident engagement and documentation requirements.

Running Y and Ridgewater—Certified Firewise Communities

The Shield Crest, Falcon Heights, Southview and Pine Grove area communities made measurable progress toward meeting Firewise designation criteria. These efforts significantly enhanced local wildfire preparedness and contributed to long-term mitigation and resilience not only within those specific areas, but the District as a whole.

MOORE PARK FUELS REDUCTION

A second Community Wildfire Risk Reduction Grant through OSFM was used for fuels reduction work at the City of Klamath Falls Moore Park. Much of the work surrounded the Lynnwood neighborhood, ultimately making the community fire resistive for upcoming fire seasons.

This mitigation project contract between the City of Klamath Falls and the District was subcontracted to Lost River Forest Management and supervised by the Prevention Division.



Fun Fact: The \$34,271 chipper paid for itself in one season! If the District trailered the 378.8 tons to the dump, dump fees would have added up to over \$35,000.



Community Engagement

2025 EVENTS

Mills Elementary Award Assemblies
 Klamath Falls Community Parades
 YMCA Preschool Promise
 Senior Center Age Well Expo
 Klamath County Library Big Truck Tour
 Fire Prevention Week Community Safety Fair
 High School Health Occupation Classes
 City Police Dept. Citizens Academy
 Little League Baseball Opening Ceremonies

Station Tours and Visits
 Leadership Klamath
 Head Start Safety Town
 Trunk-or-Treat
 Klamath County Fair
 Citizens for Safe Schools Education
 IYS Summer Lunch Kick-off
 City Police Dept. Jr. Police Academy



BOARD OF DIRECTORS

President Gloria Storey
Vice-President Mike Jones
Secretary/Treasurer Mike Kuntz
Director Nick Randall
Director Steve Leslie

EXECUTIVE TEAM

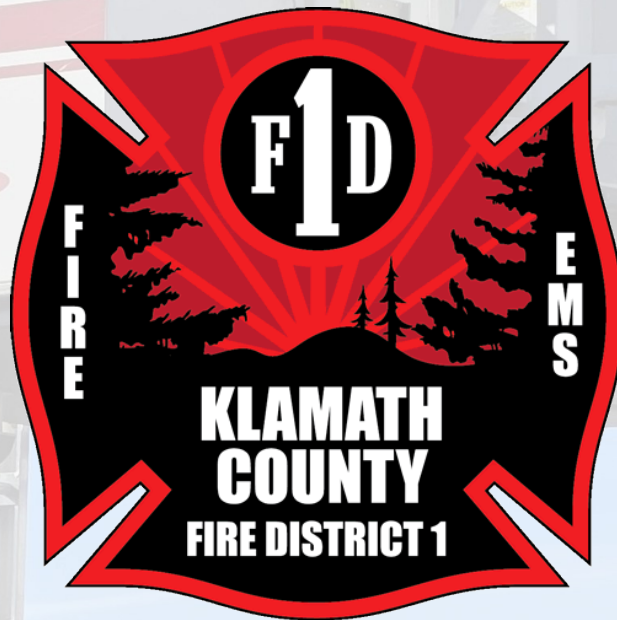
Fire Chief and Deputy Chief of Operations
Brent Knutson
Deputy Chief of Support Services Matt
Hitchcock
Division Chief Fire Marshal Chad Tramp
Division Chief of Training Gary Denney
Director of Administrative Services Phil Hull

2025-2026 CIVIL SERVICE COMMISSION

Scott Olsen
Adam Randall
M. Heather Siracusa

2025-2026 BUDGET COMMITTEE

Terry Metler
Sandra Fox
Seth Gretz
Edwin Tuhy
Joe Young
KCFD1 Board of Directors



Visit KCFD1.com for additional information and fire safety resources.