

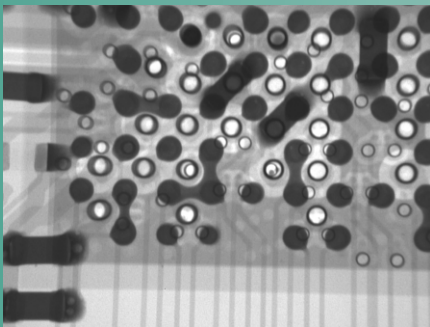


Resources Unlimited Co USA



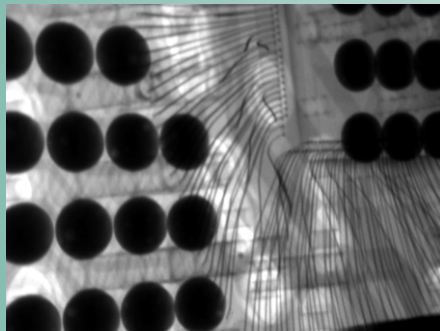
AX-7100L

**QFN X-Ray Image**



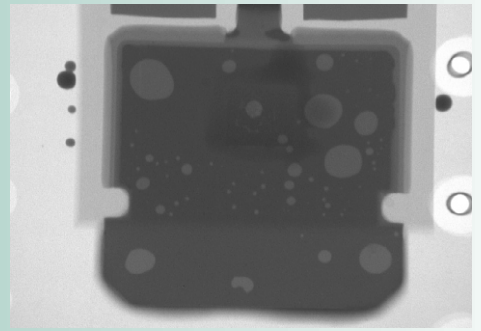
**BGA Bridging and Voids**

**FBGA X-Ray Image**



**BGA Tilt X-Ray Image**

**IC Bond Wire Image**



**Transistor Void/Solder Balls**

[www.rucousallc.com](http://www.rucousallc.com)

# Product Description

## AX-7100L



## Specifications

X-ray Tube Type	Sealed Tube
X-ray Tube Voltage	0 – 80kV
X-ray Tube Current	0.20mA
X-ray Tube Focal Spot	15 micron
Image Detector	4/2” Image Intensifier
Imaging Camera	2MP Digital
Magnification	Up to 200X
Maximum PCB Size	400 x 450mm
Maximum Inspection Area	400 x 400mm
Tilt Range	+/- 70 degrees
Step and Repeat Programming	N/A
Image Processing Software	AX-DXI
X-ray Machine Safety	<1 micro Sv/hr
Machine Dimensions (WxDxH)	1000 x 850 x 1590mm
Machine Weight	600Kg
Machine Operating Temp	0-40°C (Humidity 30-70RH)
Machine Line Voltage	100VAC-230VAC, 50/60Hz
Machine Power Consumption	0.5kW (max)

## Applications

- **BGA bridging:** Excellent
- **BGA voids:** Excellent (measure using BGA void/area software)
- **BGA opens:** Good (requires PCB tilt ~ 65-70°)
- **BGA excessive/insufficient:** Excellent (measure using BGA void/area software)
- **CSP bridging:** Excellent (requires ~ 100X magnification)
- **CSP voids:** Good (requires ~ 100X magnification)
- **CSP opens:** Marginal
- **CSP excessive/insufficient:** Excellent (requires ~ 100X magnification)
- **Flip Chip bridging:** Good (requires ~ 200 X magnification)
- **Flip Chip voids:** Marginal
- **Flip Chip opens:** Marginal
- **Flip Chip excessive/insufficient:** Good (requires ~ 200X magnification)
- **QFN bridging & voids:** Excellent (measure using QFN void/area software)
- **QFP opens:** Good (requires ~ 150X magnification/PCB tilt ~ 45-50°)
- **SMT chip component attach:** Excellent
- **I/C internal structure:** Good for bond wire and die attachment
- **MLB inner layer analysis:** Excellent for pad stack alignment and drill offset

**X-ray Safety Commitment:** All x-ray machines manufactured by Unicom Technology meet the FDA-CDRH Regulation CFR 21 1020.40 Subchapter J for cabinet x-ray systems. The FDA-CDRH standard for cabinet x-ray systems states that radiation emissions will not exceed .5 millirem/hr. 2” from any external surface. Our machines are typically 15 times less emission.

**Certificates of Compliance:** FDA Accession Number: 1231200-000  
CE Reference Number: CE 11710



USA Phone: +1 262-548-9114

China Phone +86 1886-150-9350

Email: [ken@cd-support.com](mailto:ken@cd-support.com)

Support Offices: Arizona, Wisconsin, Texas, Brazil, China, Europe

Website: [www.unicomp.cn](http://www.unicomp.cn)