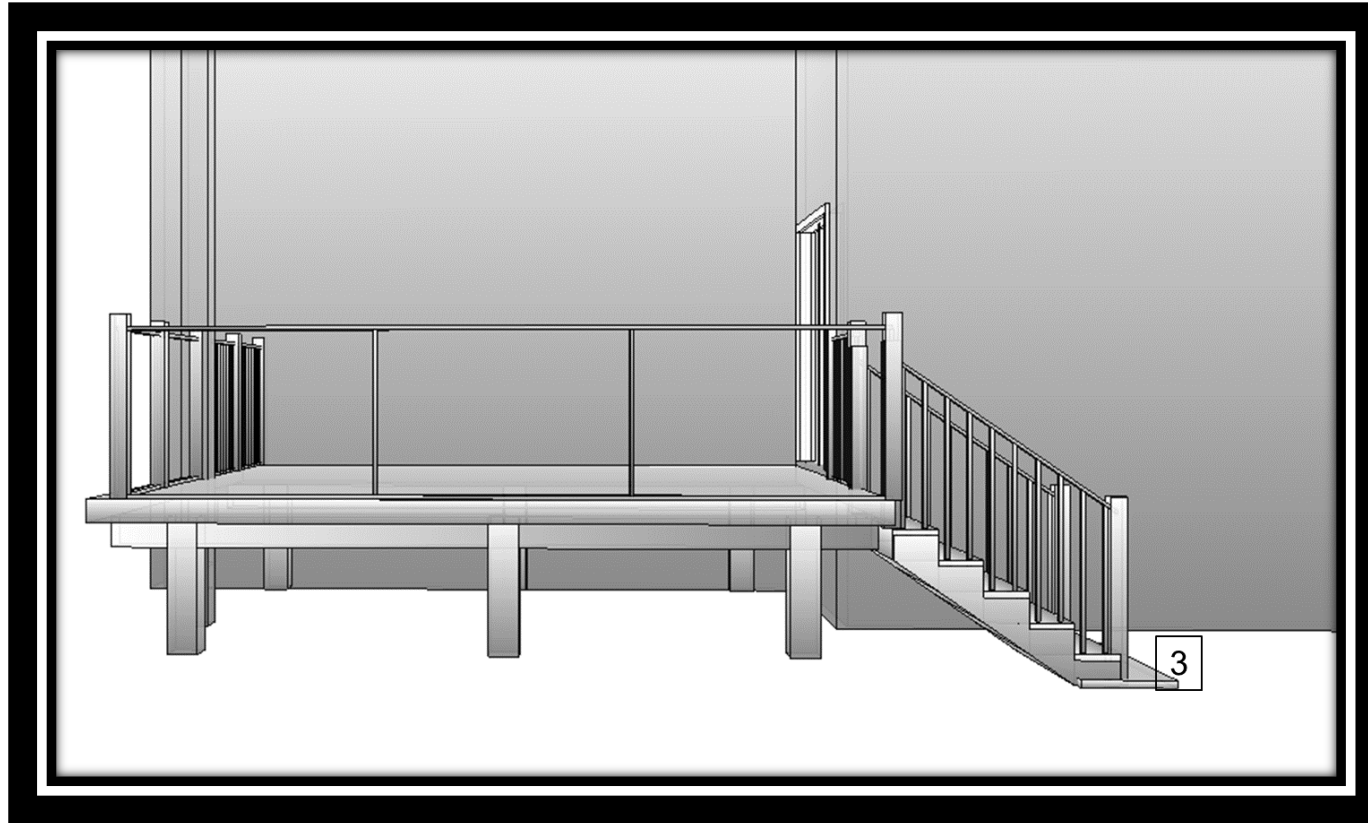


Free Deck Design: 16x14 Floating Deck

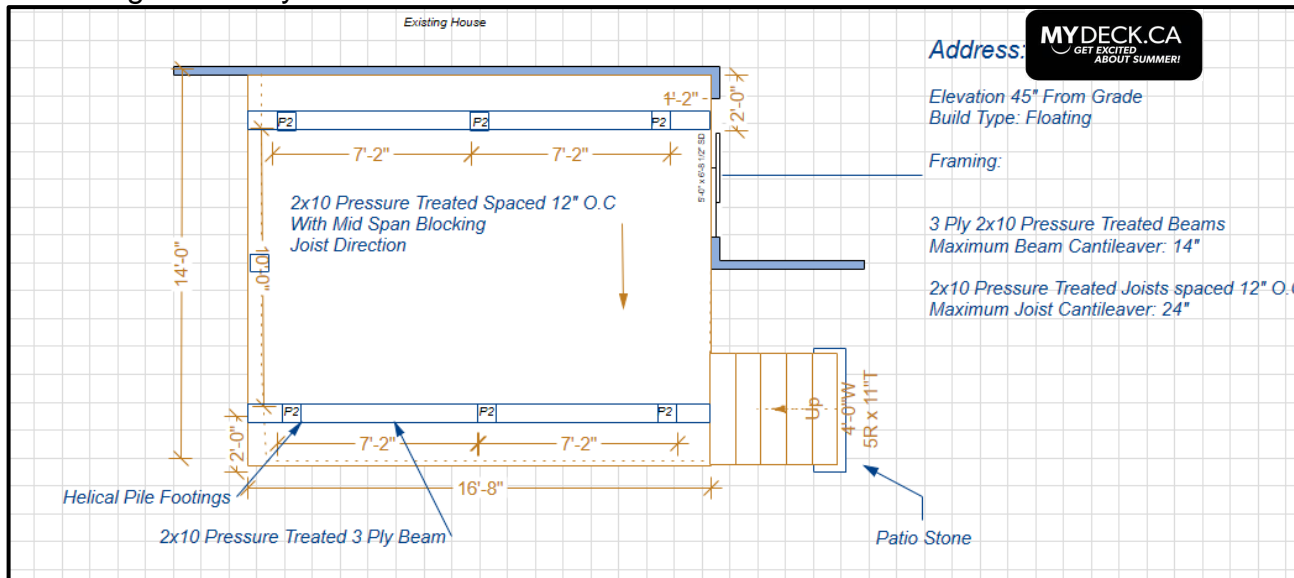


PrecisePost.ca
Deck Foundation Specialists

MYDECK.CA
GET EXCITED
ABOUT SUMMER!

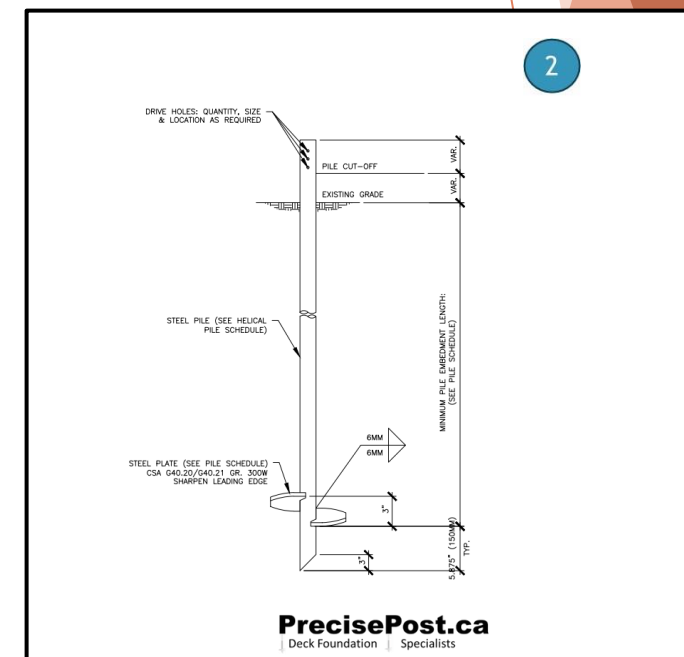
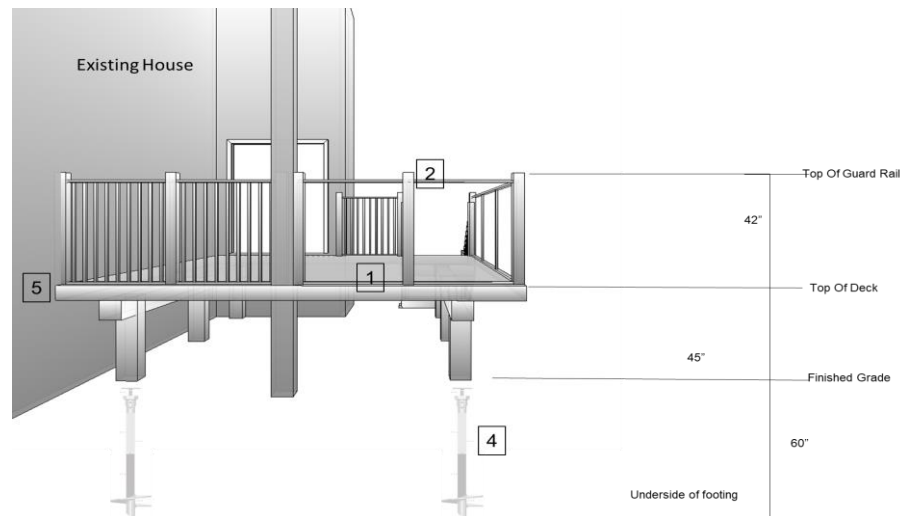
Note: This design is for educational purposes and is not valid without an up to date engineer footing stamp. Precise post and its partners take no responsibility for the design.

Footing/Beam Layout



- Deck
 - 2x10 Pressure Treated Joists @ 12 O.C with mid span blocking
 - 1x6 Azek
- Guard Rail
 - Regal Aluminum with Aluminum Spindles 4" O.C. Maximum and Glass inserts
- Stairs
 - Closed Risers 4 14/15" Min-7 7/8"Max
 - Tread min 9 1/4"
 - 2x10 Pressure Treated Stringers spaced 9"O.C
 - 1x6 Azek Decking
- Support
 - Regal Aluminum with Regal Aluminum Spindles 4" O.C. Maximum
- House Connection
 - Floating- Not attached to house

Elevation



Note: This design is for educational purposes and is not valid without an up to date engineer footing stamp. Precise post and its partners take no responsibility for the design.

Need Help With Products, Design or Installation
Services?

Visit our Partners & Promotions Page
to Find Great Local Dealers For

Sheds,
Hot Tubs,
Low Maintenance Decking, Railings, & Privacy Fences
Installation Services,
& More!!

Visit www.PrecicePost.ca/Local