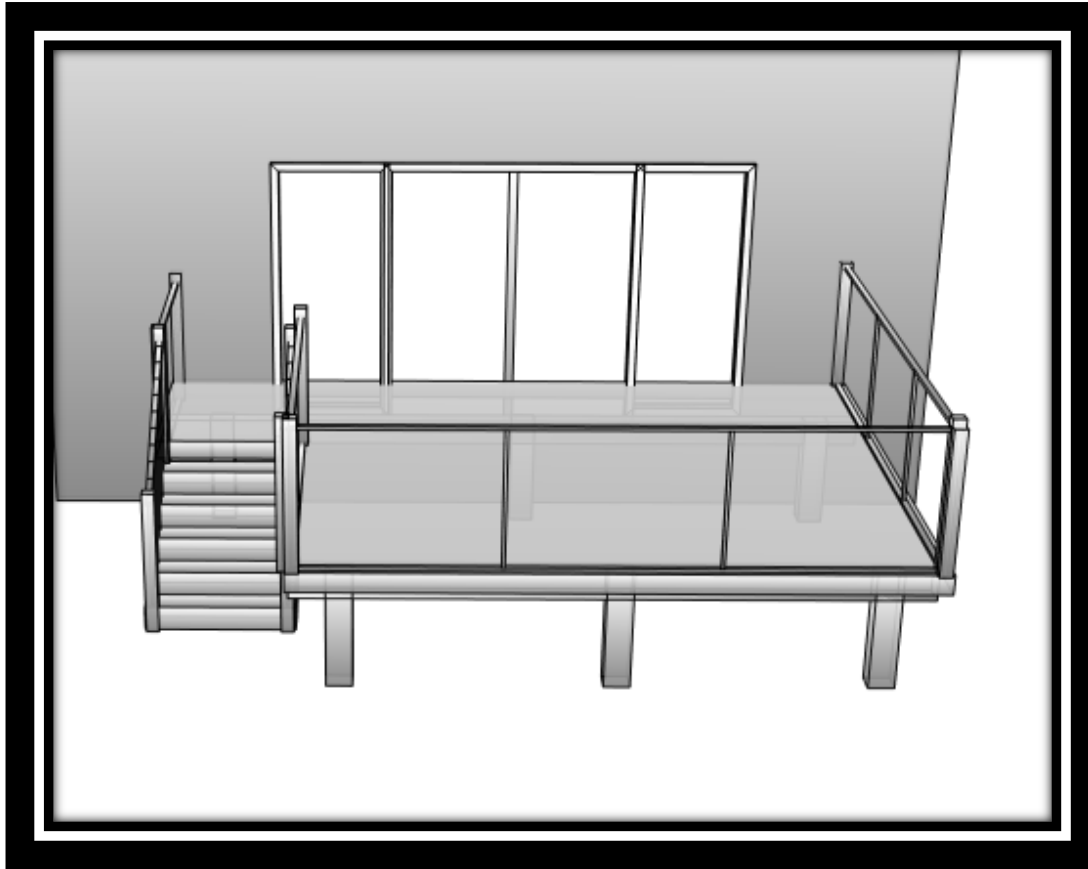


Free Deck Design: 16x16 Floating with Separate Stair Landing



PrecisePost.ca
Deck Foundation Specialists

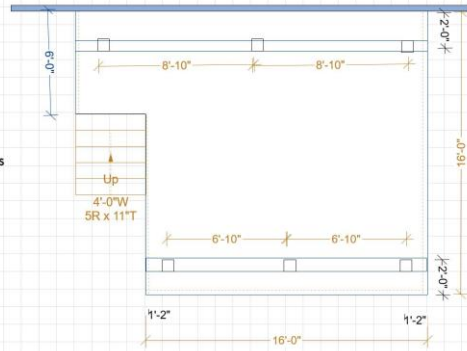
MYDECK.CA
GET EXCITED
ABOUT SUMMER!

Note: This design is for educational purposes and is not valid without an up to date engineer footing stamp. Precise post and its partners take no responsibility for the design.

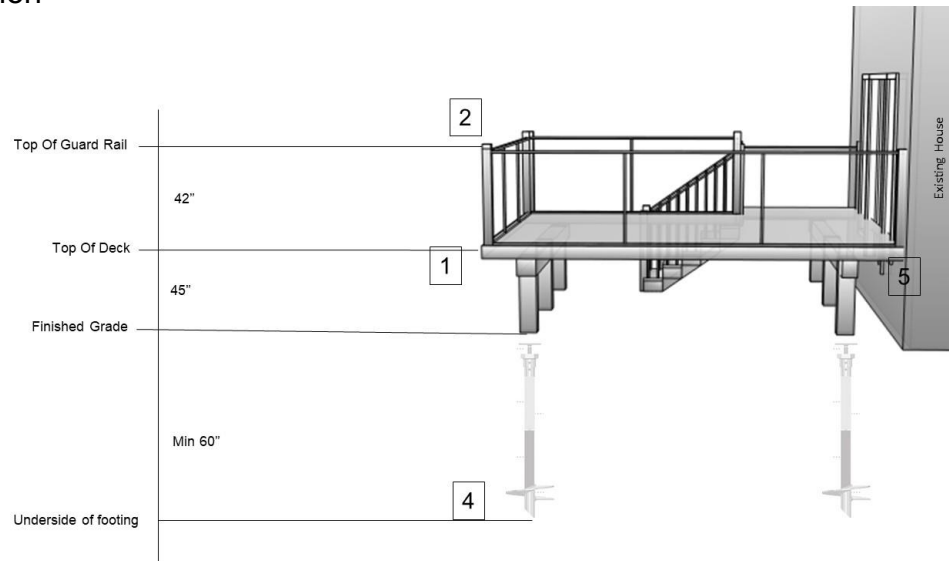
Footing/Beam Layout

Floating Sun Deck

Commercial Grade Felt: Yes
 Underdeck Stone: Yes
 Foundation: Helical Pile
 Beam Size: 2x10
 Beam Design: Drop Beam
 Joist Size: 2x10
 Joist Spacing: 12
 Frame Waterproofing: Yes
 Decking Main: Azek Harvest Collection
 Main Hardware: Hidden Link Screw System
 Decking Boarder: Azek Harvest Collection
 Decking Hardware: Composite/PVC Screws & Plugs
 Decking Pattern: Framed Traditional
 Railing Type: Regal/Classic Aluminum
 Fascia Type: Azek Harvest Collection
 Fascia Size: 12
 Skirting Type: N/A
 Skirting Pattern: N/A
 Stair Stringer Spacing: 9
 Stair Tread: Azek Harvest Collection
 Stair Riser: Azek Harvest Collection
 Stair Design: Inside Stringers- Mitred Boards

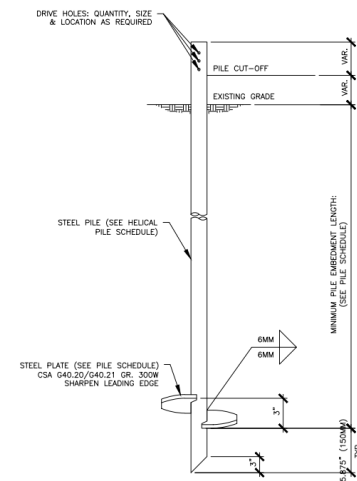


Elevation



- Deck
 - 2x10 Pressure Treated Joists @ 12 O.C with mid span blocking
 - 1x6 Azek
- Guard Rail
 - Regal Aluminum with Aluminum Spindles 4" O.C. Maximum and Glass inserts
- Stairs
 - Closed Risers 4 14/15" Min-7 7/8"Max
 - Tread min 9 1/4"
 - 2x10 Pressure Treated Stringers spaced 9"O.C
 - 1x6 Azek Decking
- Support
 - Regal Aluminum with Regal Aluminum Spindles 4" O.C. Maximum
- House Connection
 - Floating- Not attached to house

2



PrecisePost.ca
Deck Foundation Specialists

Note: This design is for educational purposes and is not valid without an up to date engineer footing stamp. Precise post and its partners take no responsibility for the design.

Need Help With Products, Design or Installation Services?

Visit our Partners & Promotions Page to Find Great Local Dealers For

Sheds,
Hot Tubs,

Low Ma

Visit www.PrecicePost.ca/Local

ty Fences

& More!!