



# APPLICATION OPTIMIZER AI ENRICHED

*Software Solution*

Nima Gougol, CEO

 **Clouptima Inc.**

535 Mission St 14<sup>th</sup> floor San Francisco, CA 94105



## PROBLEM

---

- Enterprise applications experience bottlenecks and may even crash.
- Microchip simulations can require, ranging from several days to a month.
- Doubling resources might yield only a 20% performance improvement.



## SOLUTION


---

- Converting components of the app to Kubernetes microservices on the fly.

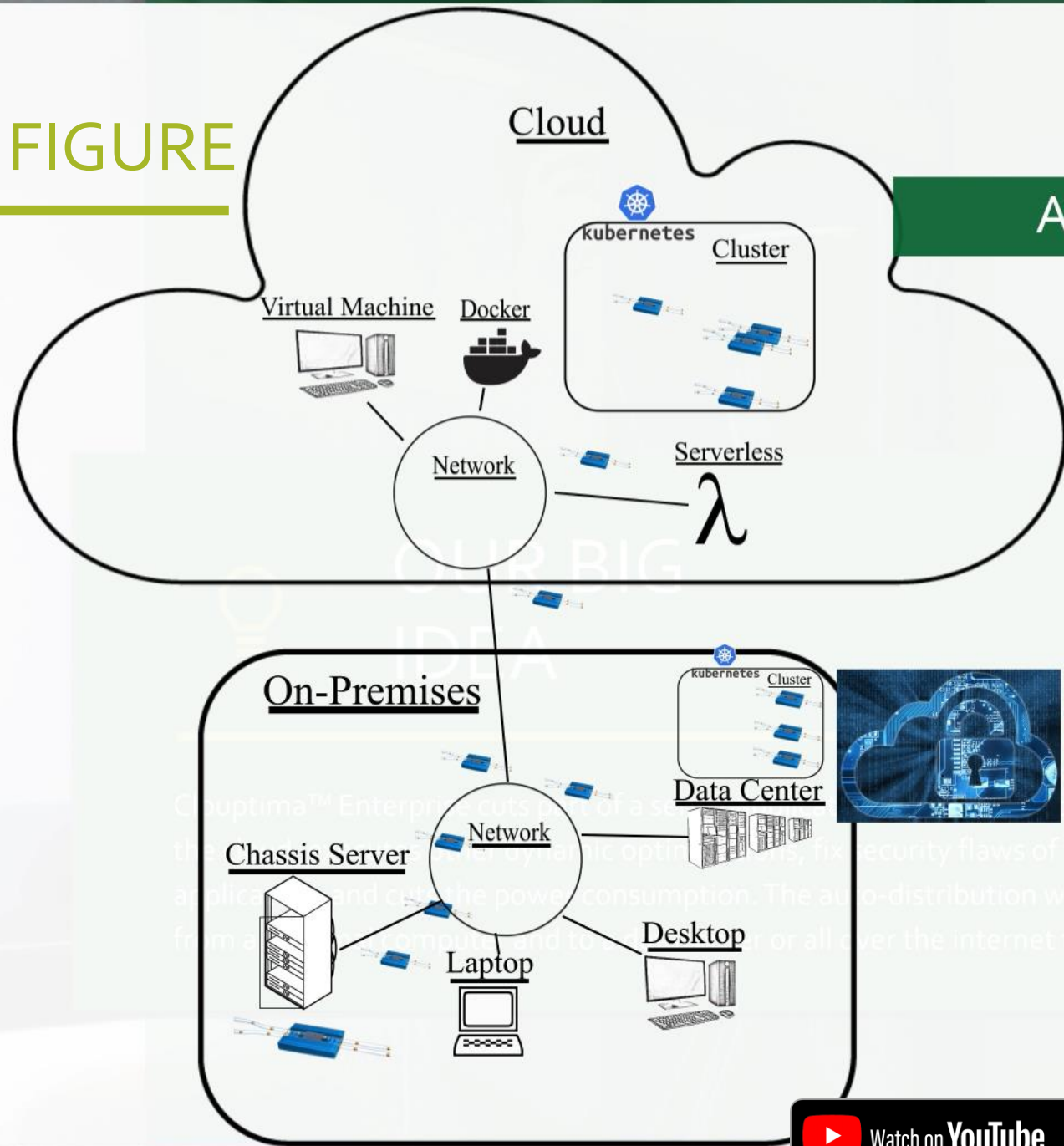


## OUR BIG IDEA

---

Clouptima™ software optimizes any application 10x faster by auto parallelization across the on-premises and the cloud. Enriches monolith apps with Kubernetes's orchestration and crash recovery.  More dynamic optimizations, security patches, and power management, incorporating AI.

# FIGURE



## Auto-parallelization

**1000x** RESOURCES at peak

**1/2** RESOURCES overall

**1/10** RESOURCES at target server

**10x** SPEED

**MICRO SERVICES** **CRASH RECOVERY**



# POWER MANAGEMENT



- Data center's electricity has become cause of global warming.
- Distributed computing reduces individual CPU heat.



PRESENT



Together we can fight  
**GLOBAL WARMING**



# FOUNDERS



Nima Gougol

CEO , Principal Engineer

21\* years designing programming languages.



Zahra Hashemipour

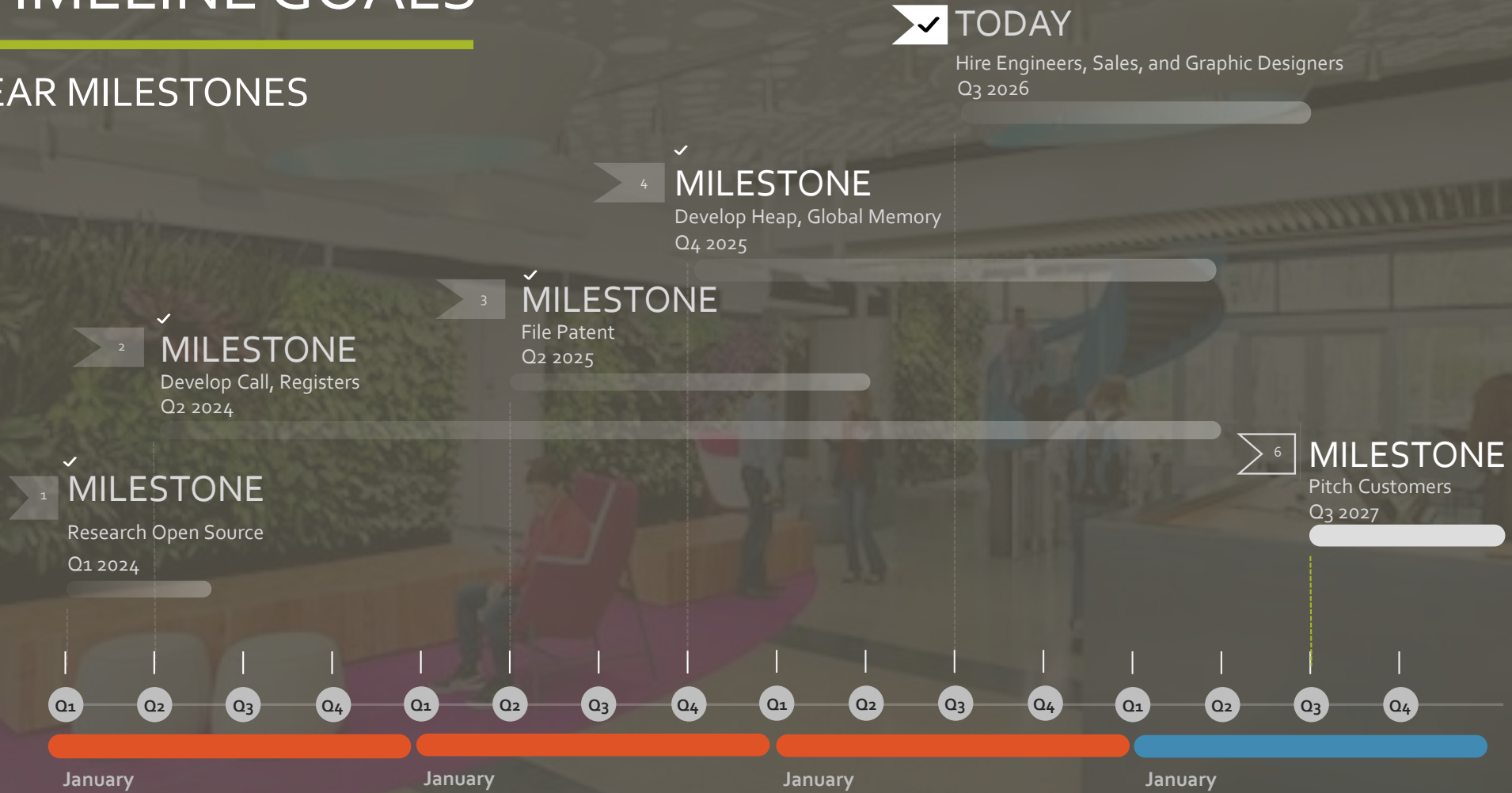
CFO

Used to be pharmacy manager.

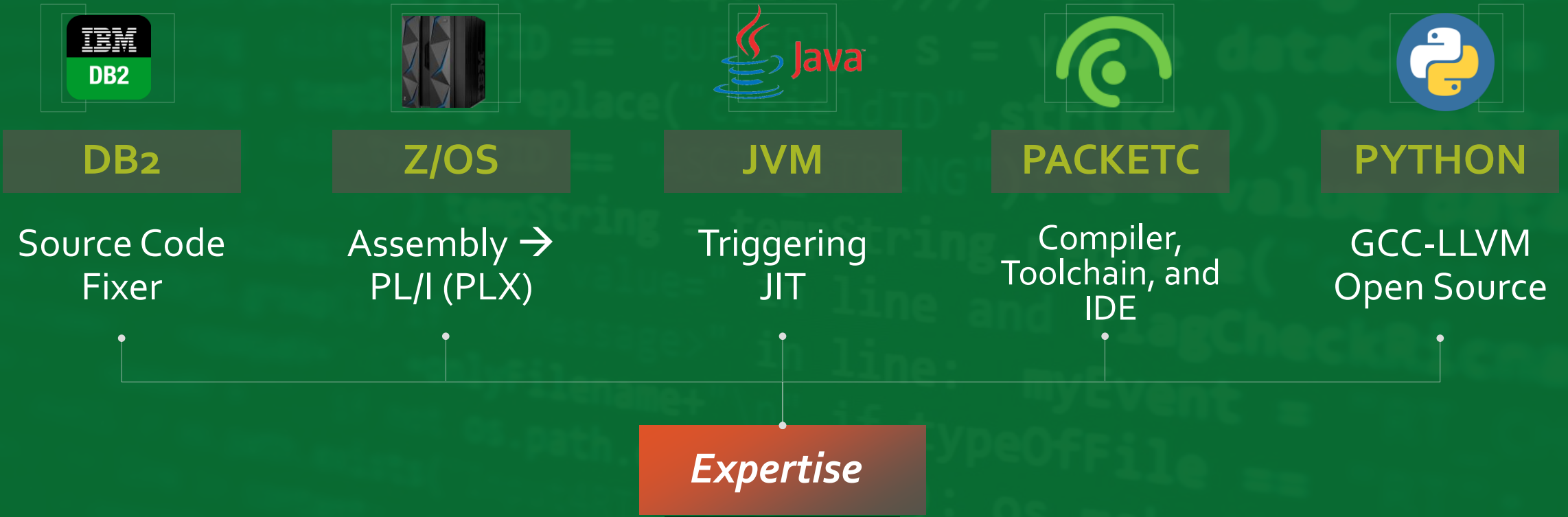
\* Focus since beginning of master's program in 2005

# KEY TIMELINE GOALS

## FOUR YEAR MILESTONES



# NIMA'S BACKGROUND



# THE TEAM



**Nima Gougol**

CEO , Principal Engineer



**Shubham Sondhi**

Software Engineer II



**Zahra Hashemipour**

CFO



**Steve Harris**

Small Business Administration Mentor



**Alvin Cheung**

UC Berkeley Professor



**Andrew Lloyd**

Patent Attorney



**Nick Francis**

Corporate Attorney

# TRACTION

## LETTER OF INTENT



University of California  
San Francisco



”

If you can cut our IC simulation time to a few hours (from couple days or a month)? If you can let us utilize computing power of the cloud in secure, isolated, and confidential way? Can't wait to see what difference your solution will bring to our department and will strongly suggest our VP to consider buying your technology.

-Behrouz Nakhkoob  
Senior Principal IC design Engineer



”

As a physician who is avid user of cloud system in medical field, I see the imminent need to optimize the cloud to run it faster. I would highly recommend to our hospital CEO to purchase this system when it hits the market.

-Amir Gougol  
Gastroenterologist & Transplant Hepatologist



”

Nima, your company's optimizations are novel and incomparable. I will give my strongest vote so that WestFab Mfg. Inc., our mid-size business closes any deal with Clouptima Inc. at any price when you guys start supporting Windows.

-Matt Larson  
VP of Operations



# BUSINESS MODEL



## License



Online management console.

Manual installation as well.

Available on AWS Marketplace.

Free version on Docker Hub,  
`docker run <options> clouptima -e app`

Clusters on customer's AWS.

Clusters on on-premises too.



## Service

Users sharing on-premises. 

Airbnb of cloud computing. 

Collective crypto mining. 

Airbnb of crypto mining. 

Providing AWS seamlessly. 



## Support

Classes of platinum and silver (free).

Prioritizing customers' requests.

Troubleshooting.

Introducing our partners.

Cloud computing consultation.

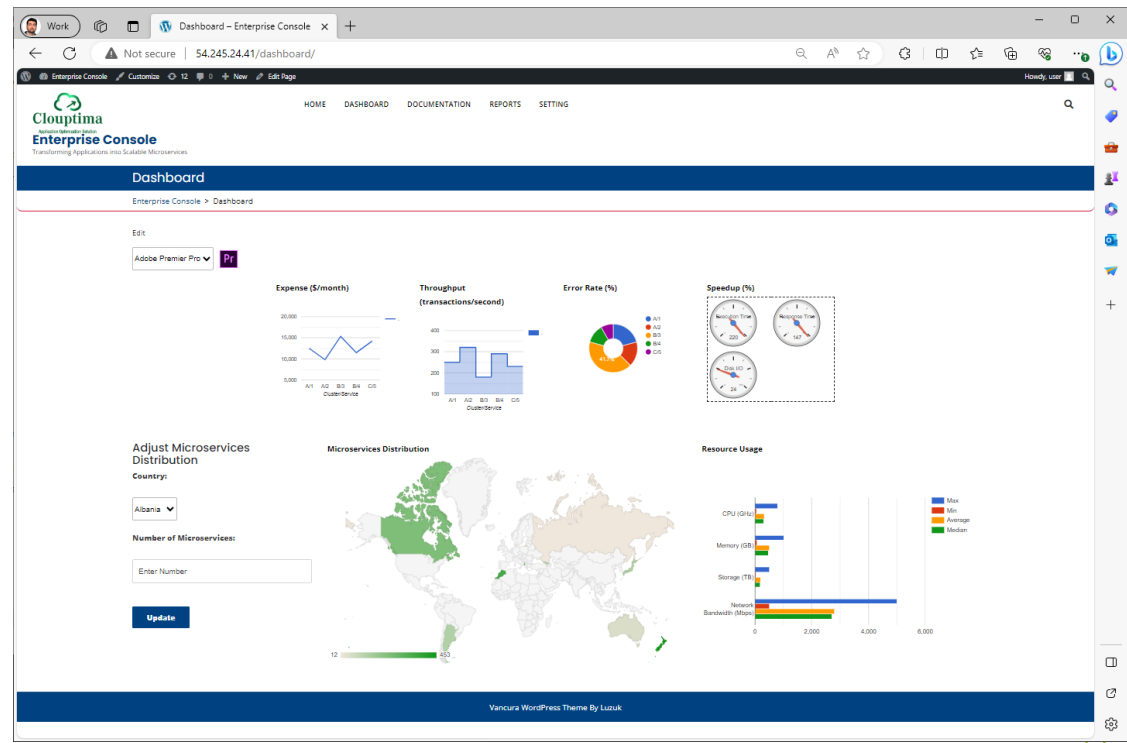
AWS customization.

# PRICING

\$3,000\* per server or cloud cluster per month



\*Based on customer feedback.



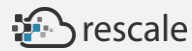
# MAJOR COMPETITORS

---



## None – 0 MILE

Companies optimize at programming language level or at platform level and we **at application executable level.**



## Not Equivalent – 0 MILE

Partnership opportunity.



## OUR IP

---

**uspto**

UNITED STATES  
PATENT AND TRADEMARK OFFICE

APPLICATION #  
**17/814,528**

- ▶ Utilizing 1,000 CPUs instead of 1 CPU at peak hours.
- ▶ Distributed memory, using Redis.
- ▶ Reducing the wait time between processes.







## OUR IP



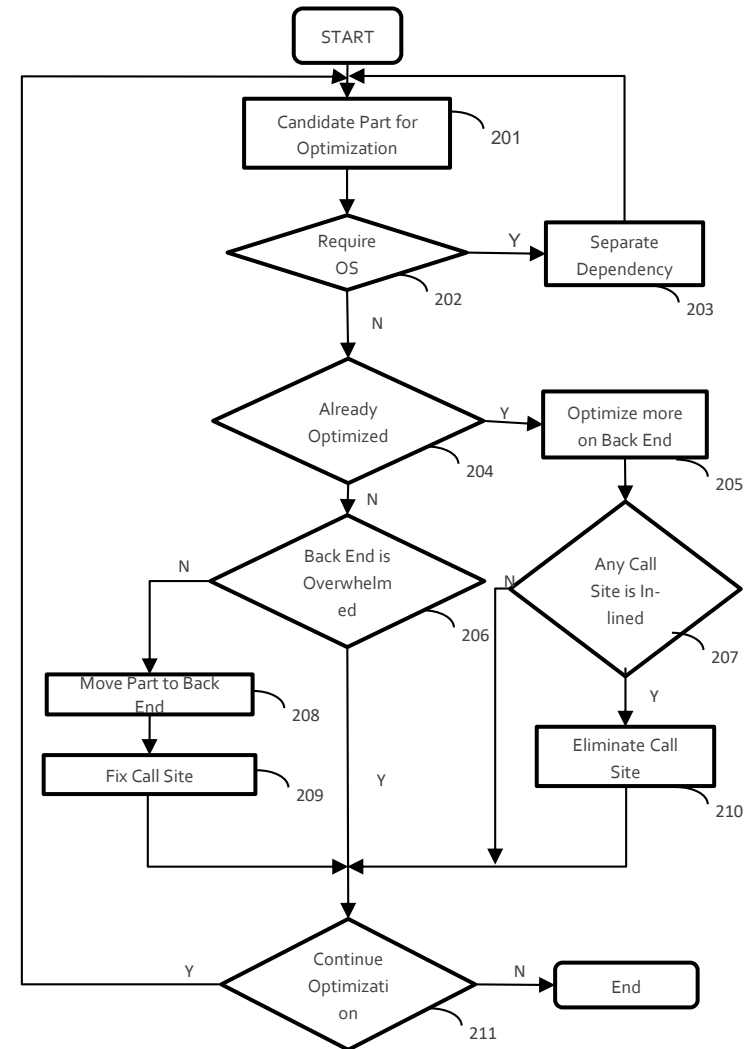
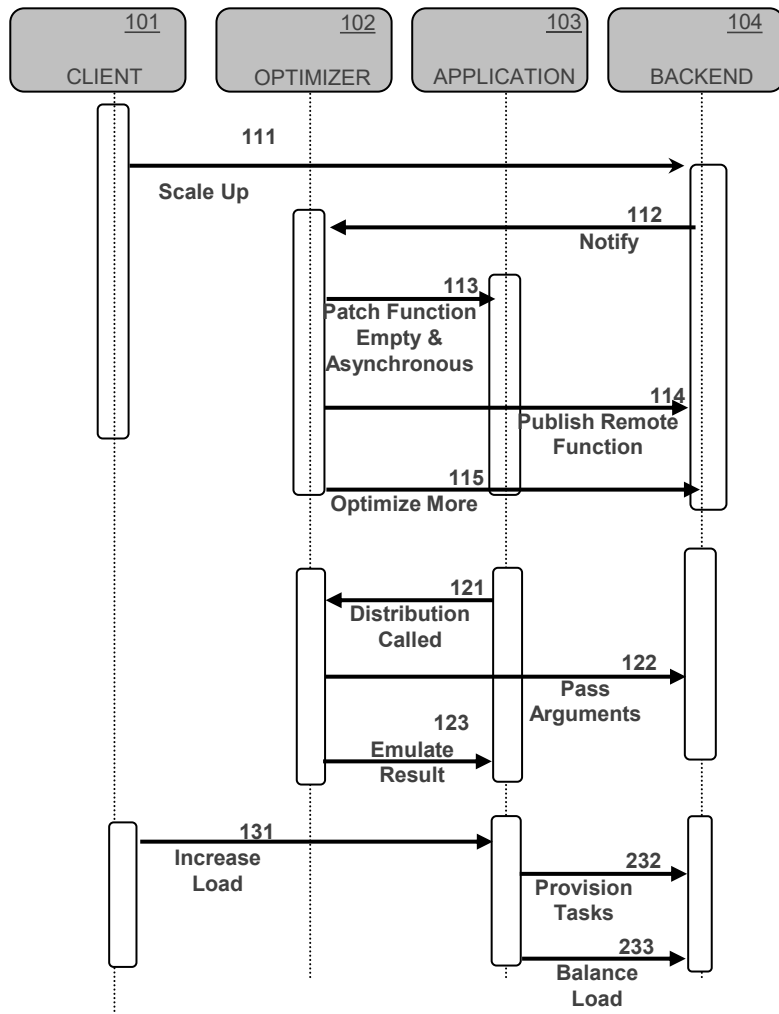
**uspto**

UNITED STATES  
PATENT AND TRADEMARK OFFICE

APPLICATION #  
**17/814,528**

- ▶ Using algorithms of dynamic optimization from compiler design. 
- ▶ Fixing security flaws by patching obsolete APIs, etc. 
- ▶ Cutting power consumption by compressing data in memory, etc. 
- ▶ Incorporating machine learning. 

# TECHNICAL APPROACH



# OUR SERVICES

---



## Extended Office Hours

Mon - Sat: 6:00AM to 9:00PM

24/7: Live Chat on Website



## Call-in Consultation

We will help using MS Teams and screen sharing.



## In-field Expert

We will be there before going live.



## Frequent Upgrade

We will make it more robust and efficient.

# ROADMAP

## FOLLOWING FOUR YEAR

### ✓ FOUR YEARS FROM TODAY

Develop Power Management Enhancement  
Q3 2030

#### 4 MILESTONE

Develop Security Monitoring  
Q4 2029

#### 3 MILESTONE

File Extra Patents  
Q2 2029

#### 2 MILESTONE

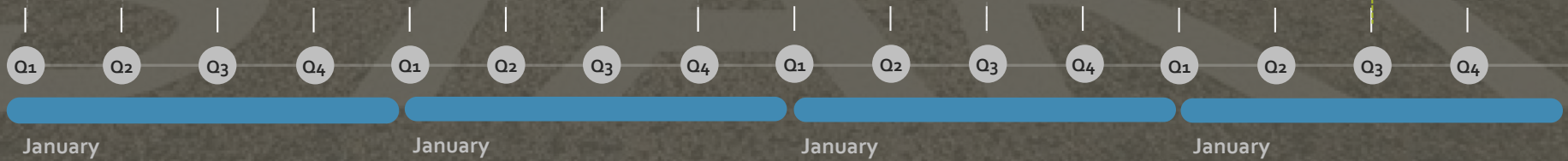
Incorporate Machine Learning  
Q2 2028

#### 1 MILESTONE

Develop Extra Dynamic Optimizations  
Q1 2028

#### 6 MILESTONE

Develop Security Patch Enhancement  
Q3 2031



Ran foo4() for 10000000000 times

Ran foo() for 100000 times

Ran foo2() for 10000000000 times

**PROTOTYPE / ALPHA**

Ran foo2() for 10000000000 times

**AWS ON-PREMISES**

Ran foo3() for 10000000000 times

Ran foo4() for 10000000000 times

back to main

[nima@ip-172-31-13-25 bin]\$ cloudware -e ./foo

Ran foo() for 100000 times

Ran foo1() for 10000000 times

Ran foo2() for 100000000 times

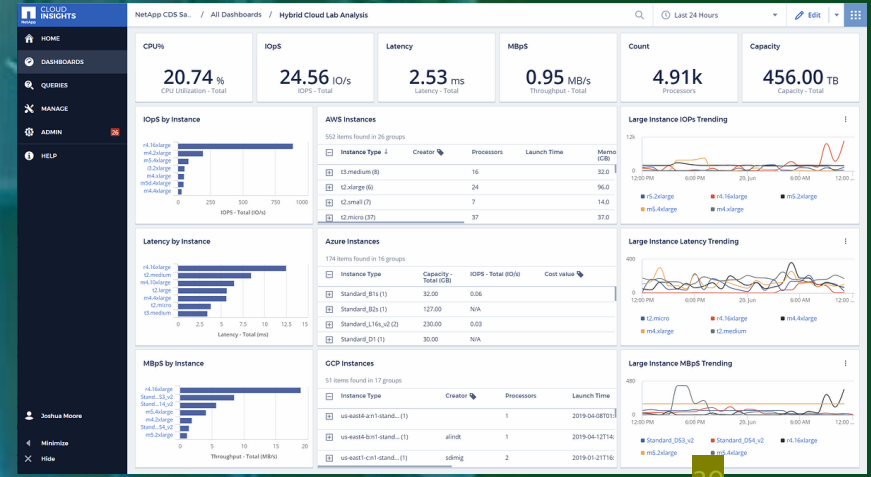
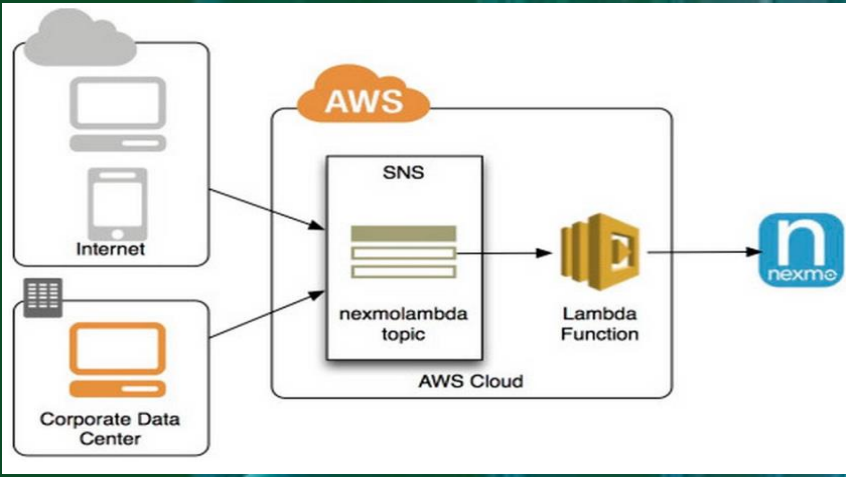
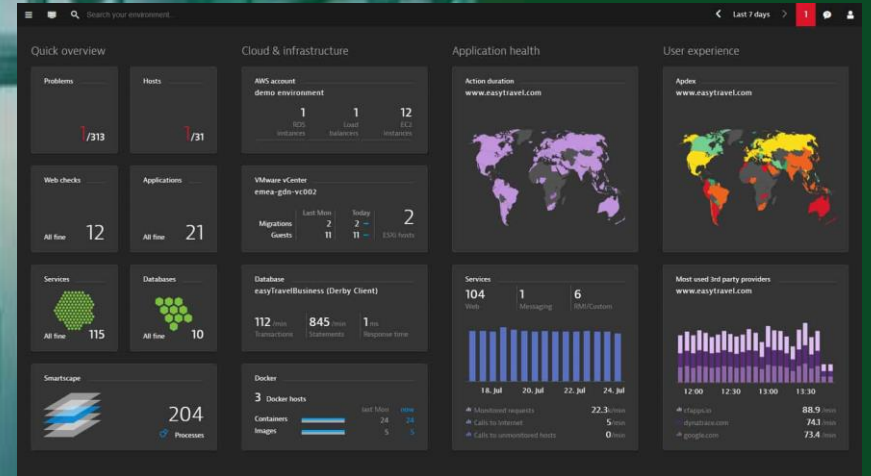
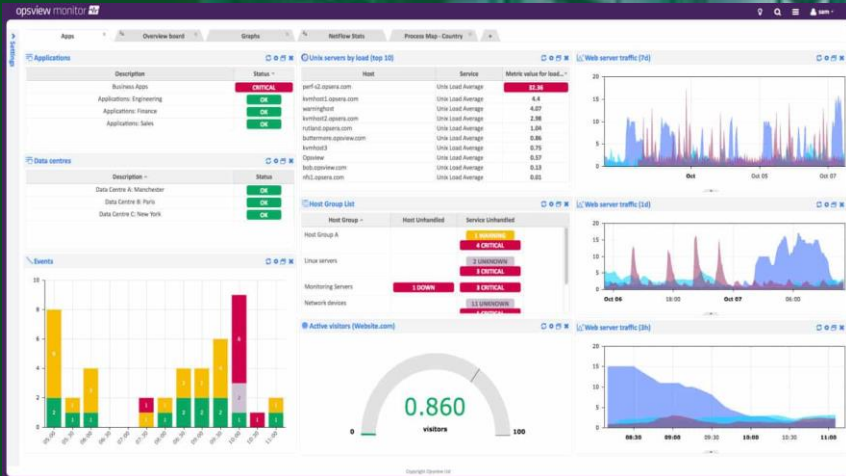
Ran foo3() for 10000000000 times

Ran foo4() for 10000000000 times

# PROTOTYPE / ALPHA

## AWS, ON-PREMISES

Clouptima™  
Enterprise inherits  
every AWS  
appliance





## INVESTMENT OPPORTUNITY

**\$0.5\*** pre preferred stock.

\* Based on existing intellectual property.

# GO TO MARKET

# MARKET PLACE



## Affiliate

- Strategic partnership with a cloud service provider, **co-building** and co-selling
- Co-selling with data center providers, and enterprise software providers



## Outsourcing

- Lead generation companies, such as CIENCE, SalesRoads, and Sales Outsourcing Pros
- Marketing companies like N3 part of Accenture, MarketStar, and Intelemark



## Network

- Experienced salespeople with validated customer networks
- Share holders' and employees' connections



## Website

- Keywords of accelerate EDA simulation, accelerate enterprise application, migration to micro services architecture
- Keywords of off-loading to the cloud, cloud computing optimization, dynamic optimization, auto-parallelization



## App Store

- AWS Marketplace
- Docker Hub, free express version



## Social Media

- LinkedIn content suggestion
- Ads



## Academy

- Conferences

# INDUSTRY OUTLOOK



91%

Average Business Who Use Cloud\*



\$495B

Cloud Spending



65%

Average Profit Margin



\$12M

Average Annual Revenue per Business



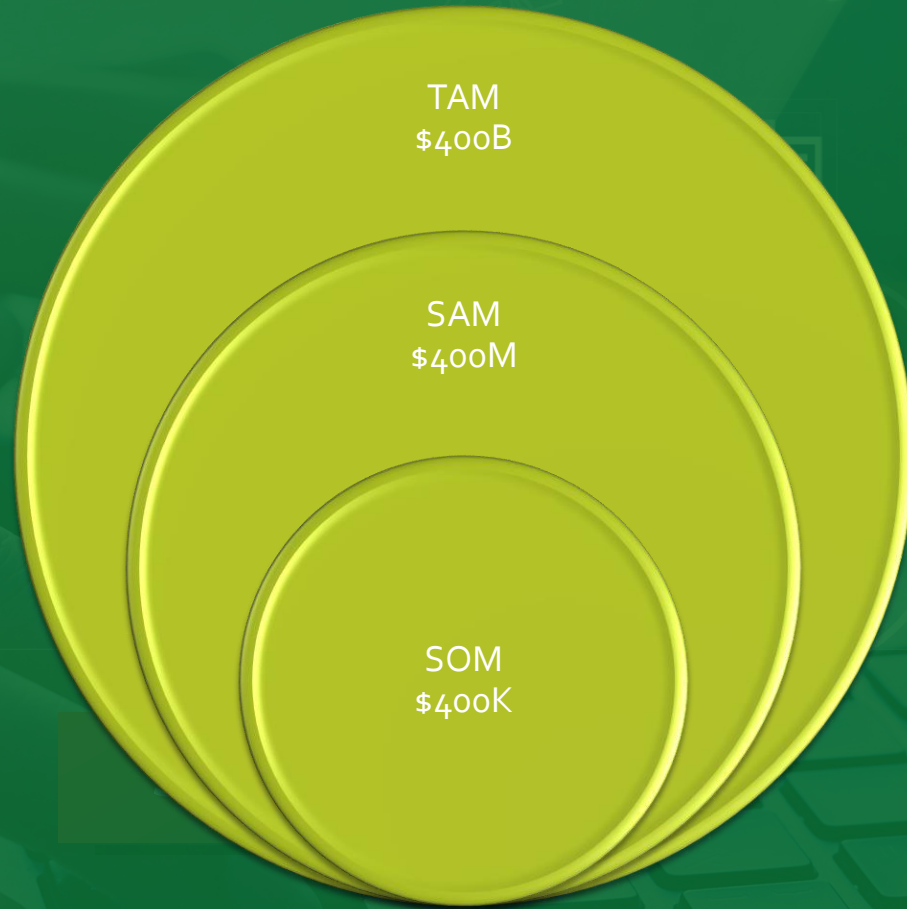
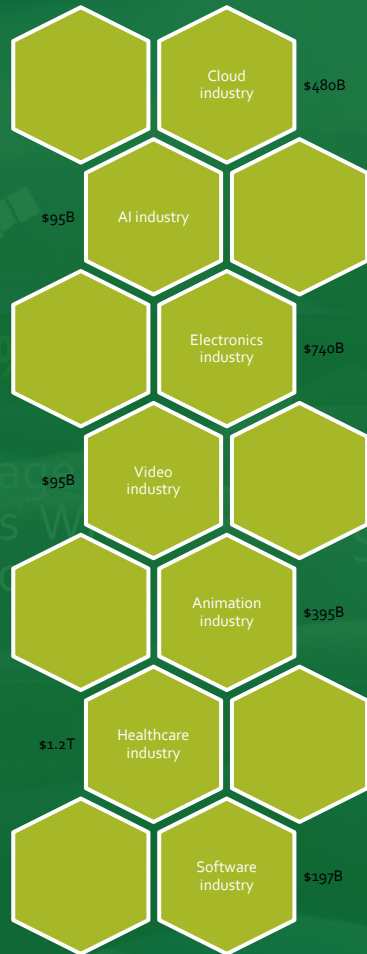
28.6%

Market Growth Per Year

*Success*

\* According to Right Scale's Annual State of the Cloud Report

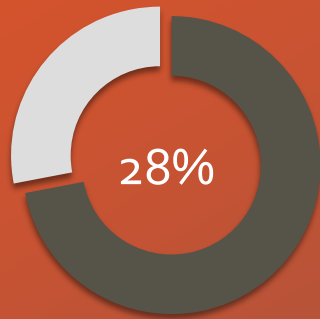
# MARKET SIZE



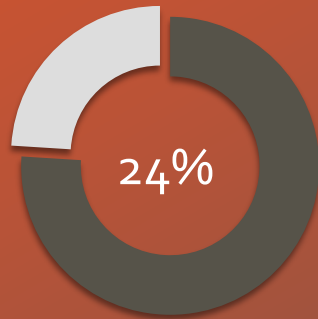
\* According to Right Scale's Annual State of the Cloud Report

# THE MARKET

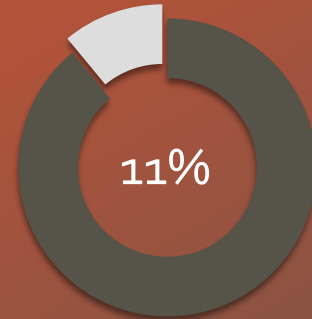
## CUSTOMER SEGMENTATION



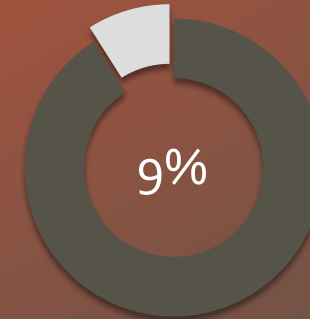
Cloud Users



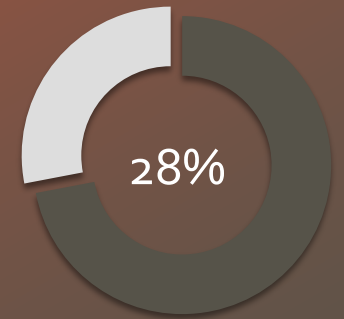
Developers



Cloud Providers



Service Providers



On-premises Users

Services	YR 2027	YR 2029	GROWTH	YR 2031
Cloud Users	\$445,464	\$3,633,787 *	371%	\$29,641,914
On-premises Users	\$577,464	\$3,633,787	371%	\$29,641,914
Cloud Providers	\$168,969	\$1,998,333	283%	\$11,243,485
Developers	\$437,938	\$2,756,666	415%	\$22,486,970
Service Providers	\$198,247	\$1,127,727	371%	\$9,199,215
<b>TOTAL</b>	<b>\$1,828,083</b>	<b>\$13,150,299</b>		<b>\$102,213,498</b>

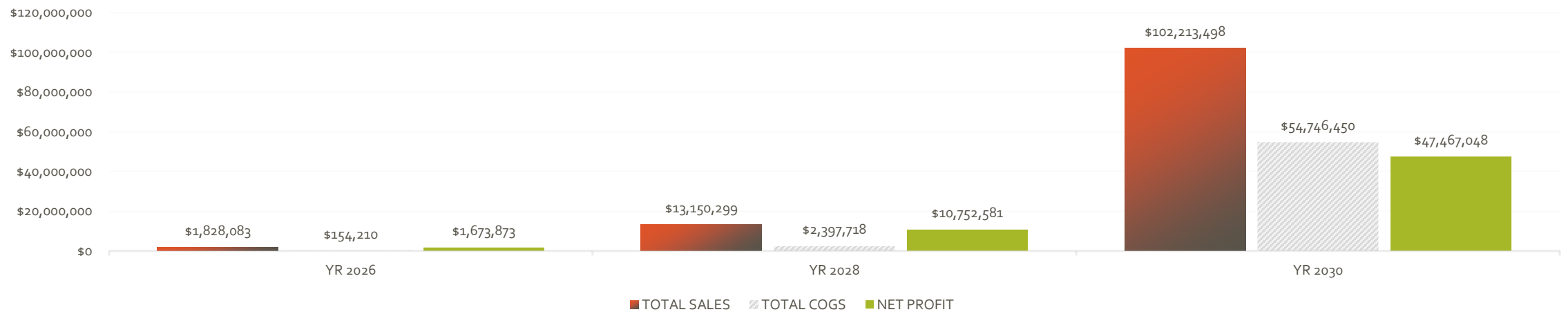
\*Based on the letters of intent and equivalent sales on internet.

# EXIT STRATEGY

## REVENUE, IPO

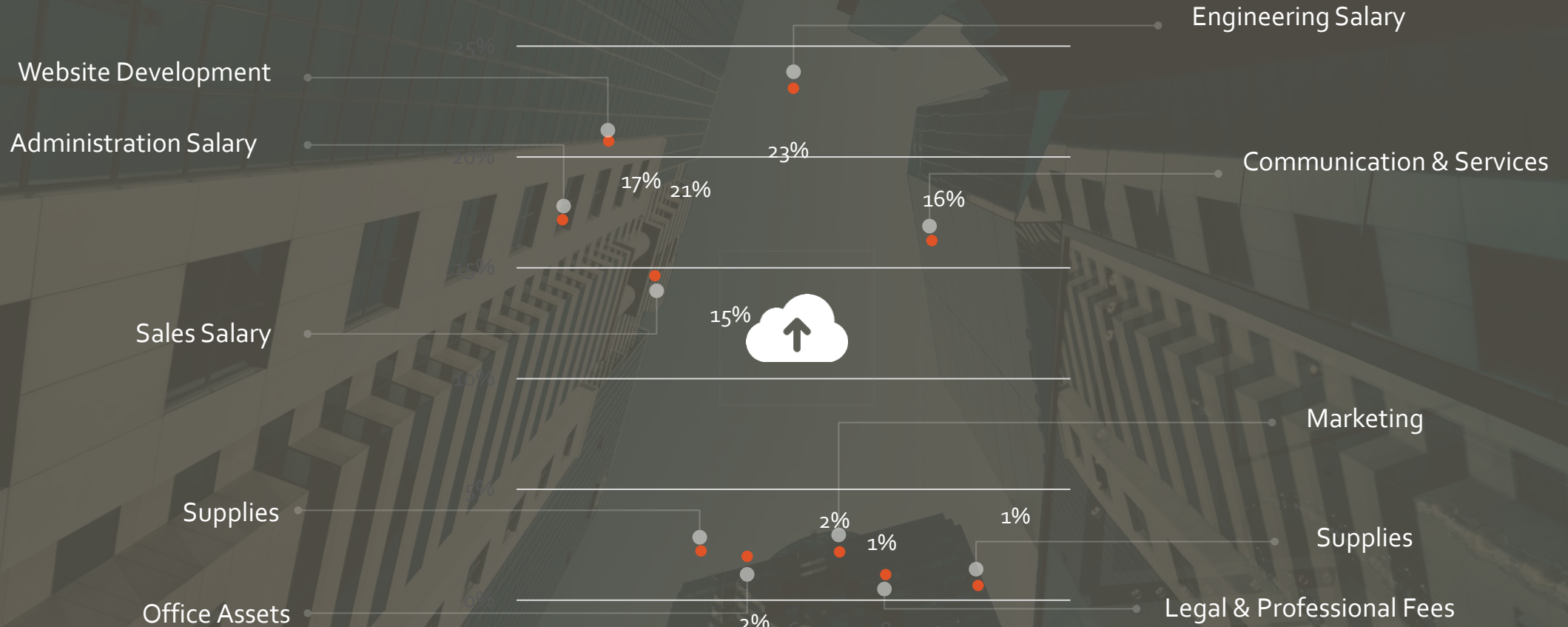
SALES SUMMARY	YR 2027	YR 2029	YR 2031
TOTAL SALES	\$1,828,083	\$13,150,299	\$102,213,498
TOTAL COGS	\$154,210	\$2,397,718 *	\$54,746,450
NET PROFIT	\$1,673,873	\$10,752,581	\$47,467,048

### Annual Sales & Gross Profit



\*Based on 13 engineer employees in 2026 with salary of ~ \$90,000.

# EXPENSES



# THANK YOU

---



Nima Gougol

CEO



[nima.gougol@clouptima.com](mailto:nima.gougol@clouptima.com)



408-540-9694