



Creatrix in the Matrixx

CROCHET PATTERNS

Amigurumi Bong



Easy Skill level in US terms

Abbreviations:

Mr: Magic ring
Sc: Single crochet
Inc: Increase
Dec: Decrease
Rep: repeat
Sk: skip
Sts: Stitches
Slst: Slip stitch
Blo: Back loop only
Flo: Front loop only

Materials used:

Medium 4 worsted weight yarn
3.5mm & 3mm Crochet hook
Stitch marker
Poly fil stuffing
Scissors
Yarn needle

Back loop only stitch



Note: I do my decrease stitches through the Back loop only. This is known as an invisible decrease.

Stuffing: I stuff the bowl around R24. stuff a little as you go, leaving the top 2 inches empty

Bong

With a 3.5 mm hook an colour of choice

R1: Mr, Sc 6 into the ring	6
R2: Inc around	12
R3: *Sc, Inc* Rep around	18
R4: *Sc 2, Inc* Rep around	24
R5: *Sc 3, Inc* Rep around	30
R6: Sc 2, Inc, *Sc 4, Inc* Rep around ending with 2 Sc	36
R7: Blo Sc around	36
R8: Sc around	36
R9: *Sc 5, Inc* Rep around	42
R10: 3, Inc, *Sc 6, Inc* Rep around, ending with Sc 3	48
R11: * Sc 7, Inc* Rep around	54
R12: Sc 4, Inc, *Sc 8, Inc* Rep around	60
R13-17: Sc around	60
R19: Sc 4, Dec, *Sc 8, Dec* Rep around, Ending with Sc 4	54
R20: * Sc 7, Dec* Rep around	48
R21: Sc 3, Dec, *Sc 6, Dec* Rep around	42
R22: * Sc 5, dec* Rep around	36
R23: Sc 2, Dec, Sc 4, Dec, Ch 4, Sk the next 4 Sts, Dec in the next, *Sc 4, Dec* x3, Sc 2	30
R24: *Sc 3, Dec* Rep around, working across the 4 Ch spaces	24

R25: *Sc 3, Inc* Rep around	30
R23-45: Sc around	30

Note for R46: Change colour to your secondary colour before finishing the Slst.

The Ch 1 will count as the 1st Sc.



R46: Slst, CH 1, Sc 29	30
R47: : *Flo Sc, Inc* Rep around	45
R48: Sc around	45
R49-50: Flo Sc around	45

Slst in the next 2 sts, fasten off leaving a longtail for sewing the mouth piece to the shaft.

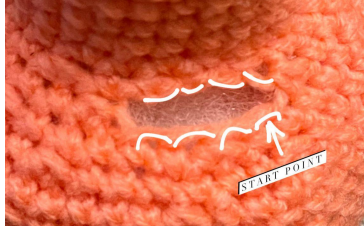
Image shows needle through the top loops of R50 going into the space between R46



Stem and Bowl

With a 3mm hook and colour of choice

Attach a standing Sc to the fist stitch we skipped in R23. Sc in the next 3 Stitches we skipped in R23. Sc across the 4 Ch's from R23. *See image below



- R1: Work 8 Sc around the opening, Slst to the top of the Standing Sc 8
- R2: Ch 1, Sc in the same space, Sc 7, Slst to the top of the 1st St of this round 8
- R3: Ch 1, Inc in the same Sp, Inc around, Slst to the top of the 1st ST of this round. 8

Sew in all ends.

Little Nug

With green and 3.5 mm hook

Ch 30. I switch to a lighter green half way, for the illusion of depth.

Sew inside the bowl.

Bong Water Insert:

With Blue yarn and 3.5mm hook

- R1: Mr: Sc 6 into the ring 6
- R2: Inc around 12
- R3: *Sc, Inc* Rep around 18
- R4: Sc 2, Inc* Rep around 24
- R5-13 :Sc around 24

Slst to the next St, Fasten off. Weave in ends.

Sew the insert through the top stitches of the insert into the back of the Flo stitches from R47. Use your Secondary colour to sew together. Stuff again if needed before finalising the closing. Sew in all ends.



Thank you to Pattern Tester:

Marie Paterson



I hope you enjoyed this pattern <3
Please feel free to sell the handmade finished product this pattern produces!

www.TheCreatrixInTheMatrixx.com

Find me on Fb and instagram @TheCreatrixInTheMatrixx

Do not reproduce any part of this pattern
© 2022 CreatrixintheMatrixx | Rowan and Holly Group