



Sunflower Foundation

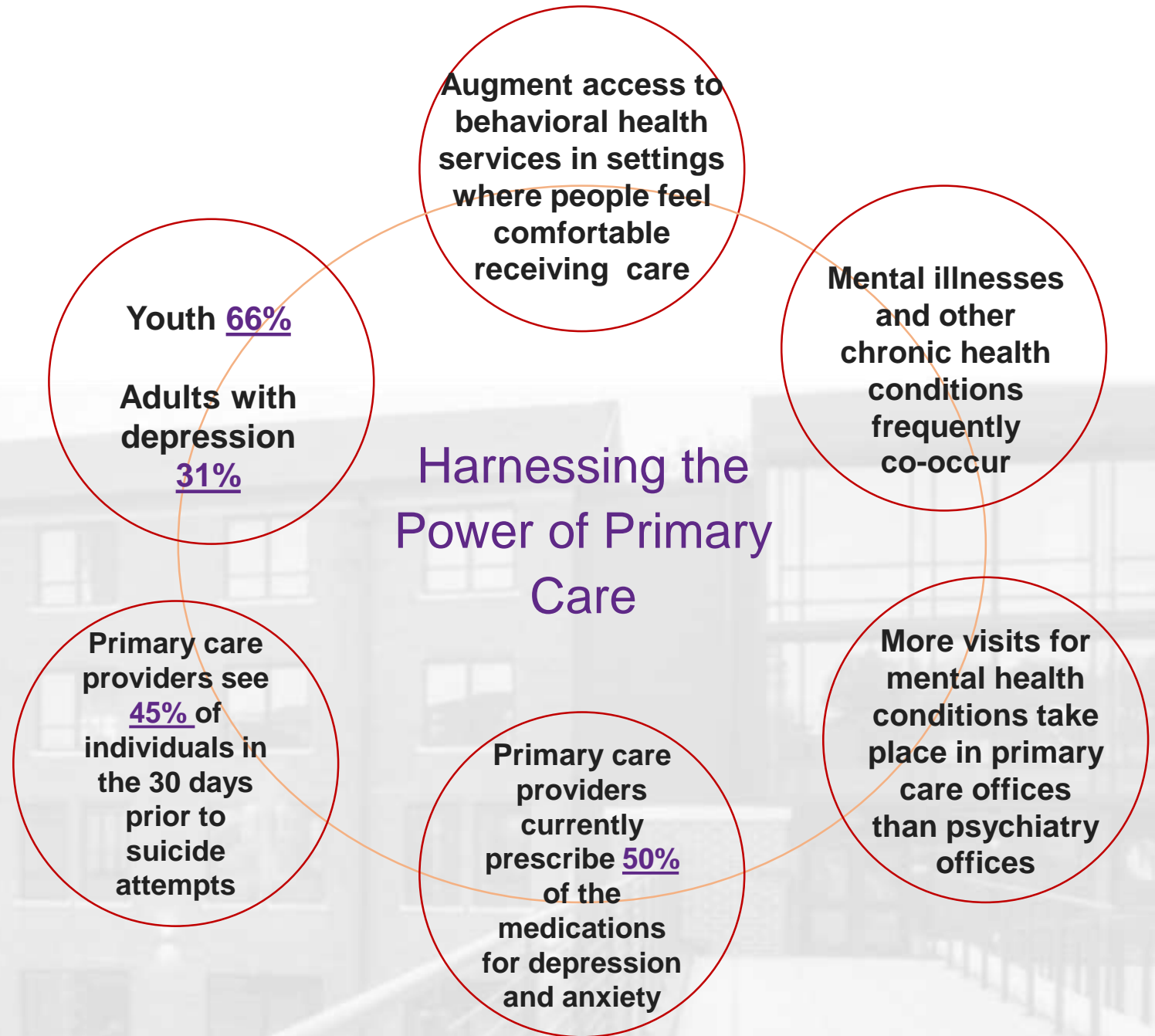
HEALTH CARE FOR KANSANS

**A 20 Year History of
Effective Grantmaking**



Why Integrated Care?

Why Primary Care?



What is Integrated Care?

Care that results from a practice team of primary care and behavioral health clinicians, working together with patients and families, using a systematic and cost-effective approach to provide patient-centered care for a defined population.

This care may address mental health and substance abuse conditions, health behaviors (including their contribution to chronic medical illnesses), life stressors and crises, stress-related physical symptoms, and ineffective patterns of health care utilization.

COORDINATION

Providers discuss patients, exchange information as needed, and collaborate from a distance.

CO-LOCATION

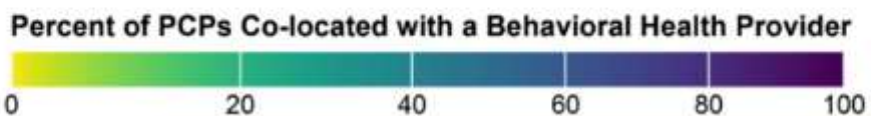
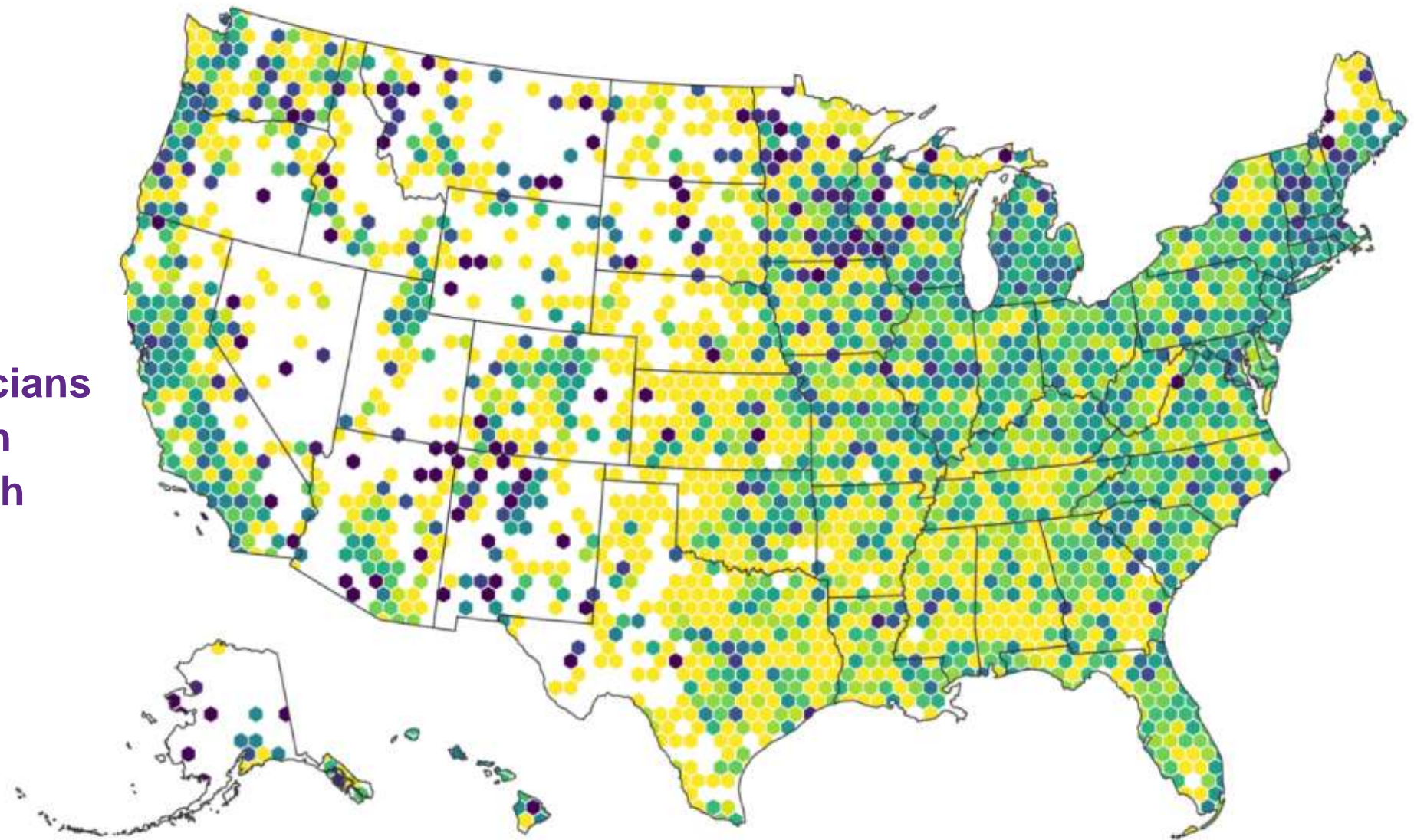
Providers are in the same facility, they might share some functions/staffing, and discuss patients as needed.

INTEGRATION

Organization has undergone system-wide transformation, merging practice concepts & culture, routinely screening & acting on findings, providers conduct real time, warm handoffs & regularly meet as a care team.

Where is Integrated Care Happening?

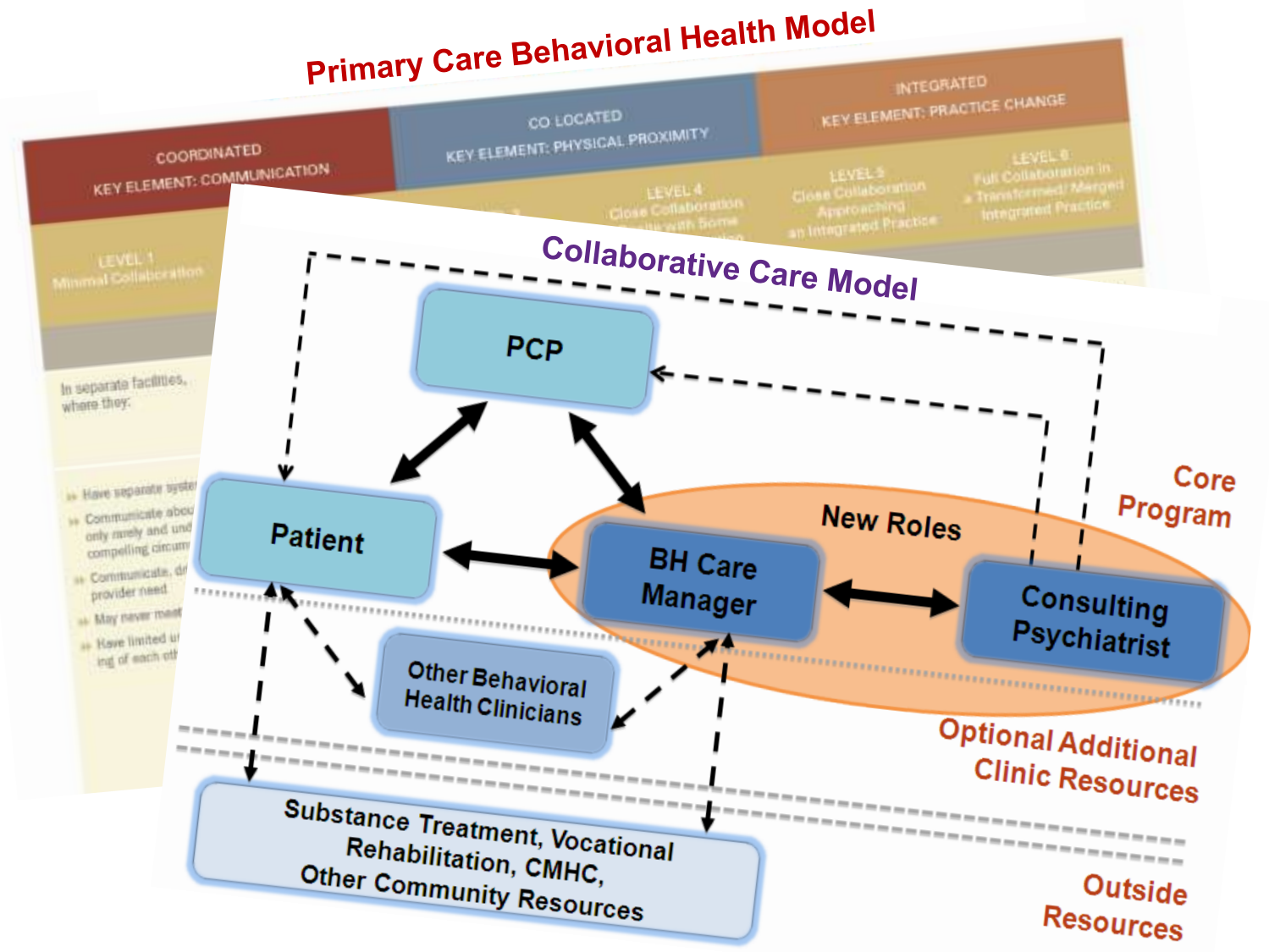
Percentage of
Primary Care Physicians
Co-Located with
Behavioral Health
Providers



○ = No PCPs located in area

Implementing Integrated Care

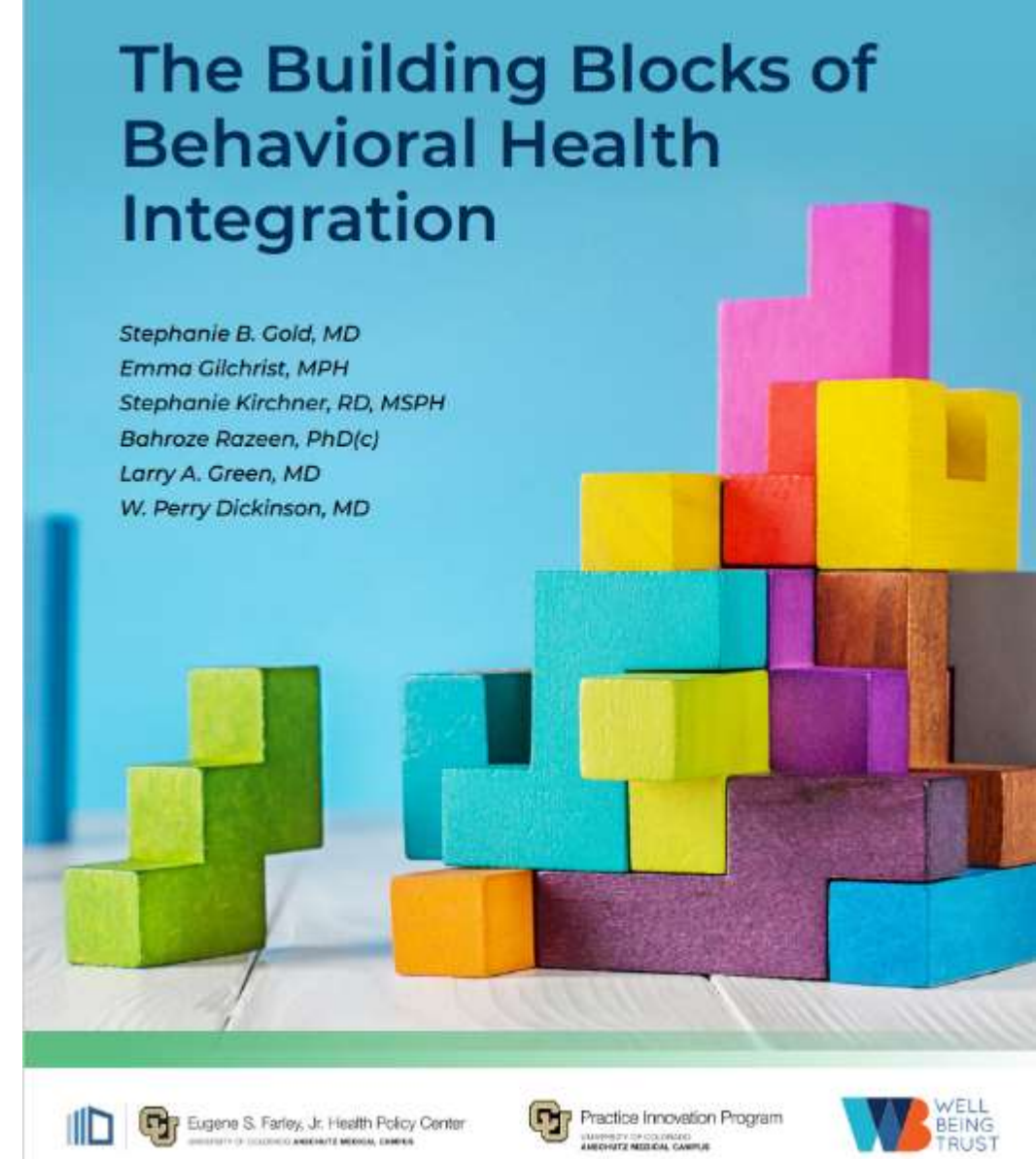
One way to think about integrated care is to consider the models, clinical pathways and perspectives that make up these efforts to bring together parts of the healthcare delivery system that traditionally work in silos.



Implementing Integrated Care

The Framework Organizes Care Delivery Expectations into Five Components of Care:

- **Foundational care delivery expectations:** Requirements for any practice integrating behavioral health.
- **Advanced coordination & care management:** Practices develop shared expectations & exchange information with behavioral health providers, manage a registry of patients with target behavioral health conditions, & screen for social needs & link patients & families to services.
- **Integrated behavioral health professional:** An integrated behavioral health professional (which could be a psychologist, licensed clinical social worker or other licensed professional) works as part of the primary care team.
- **Psychiatry:** A psychiatrist supports complex diagnostic evaluation & medication management, providing consultation to the primary care provider. They may provide direct patient care either in person or via telehealth.
- **Advanced care of substance use disorders:** The primary care provider prescribes medication for substance use disorders including tobacco use disorder, alcohol use disorder, & opioid use disorder. Counseling related to substance use disorders is provided in the practice or coordinated with resources outside of the practice.



Implementing Integrated Care

Getting the Work Off the Ground

- Establish internal behavioral health champion(s) & a committed team
- Determine the practice's mission & vision related to behavioral health
- Develop a sustainable business model, define roles, & create workflows.



Integrated Screening, Referral, and Follow-up



Prevention and Treatment of PH/BH Conditions



Care coordination and Care Management



Self-Management Support

Infrastructure:

Staffing

Clinical Workflow

Physical Space

Technology



Multi-Disciplinary Teamwork



Systematic Quality Improvement





Linkage with Community and Social Services





Sustainability

The Building Blocks of Behavioral Health Integration

Stephanie B. Gold, MD
Emma Gilchrist, MPH
Stephanie Kirchner, RD, MSPH
Bahroze Razeen, PhD(c)
Larry A. Green, MD
W. Perry Dickinson, MD

  Eugene S. Farley, Jr. Health Policy Center
UNIVERSITY OF COLORADO ANSCHUTZ MEDICAL CAMPUS

 Practice Innovation Program
UNIVERSITY OF COLORADO ANSCHUTZ MEDICAL CAMPUS

 WELL BEING TRUST

Integrated Care- Getting Started

Sunflower Foundation Integrated Care Program Support

Planning Stage

- 12-month funding
- Assess the environment
- Visit integrated facilities
- Develop implementation plan
- Begin culture shift

\$12,000

Implementation Stage

- 24-month funding
- Hire additional staff
- Physical modifications
- Screeners and workflow
- Patient/Provider feedback
- Billing

≈\$200,000

Sustaining Stage

- 24-month funding
- Expand care team
- What's working/not?
- Patient/Provider feedback
- Financing
- Educate payers

≈ \$150,000

Implementing Integrated Care



IDEAS
ACTION
RESULTS

**Tackling America's Mental Health
and Addiction Crisis Through
Primary Care Integration**

TASK FORCE RECOMMENDATIONS

March 2021



Kansas Integrated Care Learning Collaborative



Sunflower Foundation
HEALTH CARE FOR KANSANS

- Provide financial support for a phased approach to integrated care implementation in rural health clinics
- Provide technical support for integrated care grantees moving through the phases of funding



**HEALTH INNOVATIONS
NETWORK OF KANSAS**

- Serve as the hub for integrated care learning among rural health clinics in Kansas
- Provide logistics support to the integrated care technical support team from the University of Colorado

**Kansas Rural
Health Clinics**



Eugene S. Farley, Jr. Health Policy Center
UNIVERSITY OF COLORADO ANSCHUTZ MEDICAL CAMPUS



Practice Innovation Program

UNIVERSITY OF COLORADO ANSCHUTZ MEDICAL CAMPUS

- Leverage past work in rural integrated care to provide technical support to rural health clinics in Kansas moving through the integrated care learning collaborative
- Connect Kansas work to national integrated care efforts related to best practices and innovative strategies for care delivery and reimbursement



Kansas Integrated Care Learning Collaborative