

H.013284

MRB South GBR:

LA 1 to LA 30 Connector

December 12, 2022

Project Progress Update to CARB-D



LOUISIANA DEPARTMENT OF TRANSPORTATION & DEVELOPMENT | CAPITAL AREA ROAD AND BRIDGE DISTRICT



www.dotd.la.gov

Project Team

➤ Prime Consultant:

- Atlas Technical Consultants, LLC

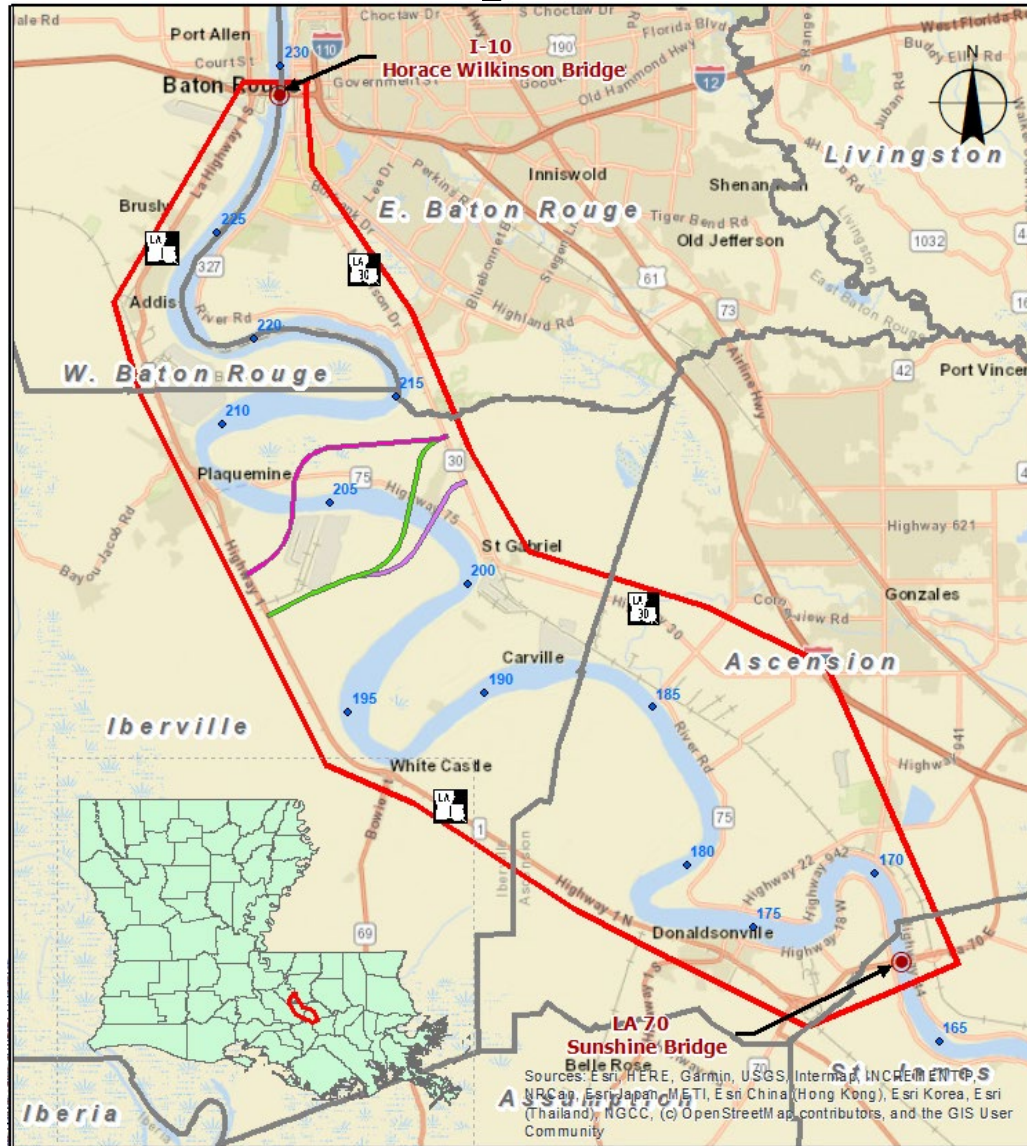
➤ Subconsultants:

- CDM Smith, Inc.
Travel Demand Model & Toll Analysis
- Neel-Schaffer, Inc.
Mesoscopic Model & Traffic Analysis
- INRO Consultants, Inc.
Mesoscopic Model Support
- Franklin Associates, LLC
Public Involvement
- FIGG Bridge Engineering, Inc.
Bridge Technical Concepts
- Shread-Kuyrkendall & Assoc., Inc.
Roadway Technical Concepts
- GIS Engineering, LLC
Navigational Considerations
- Providence Engineering & Environmental Group LLC
Environmental Inventory

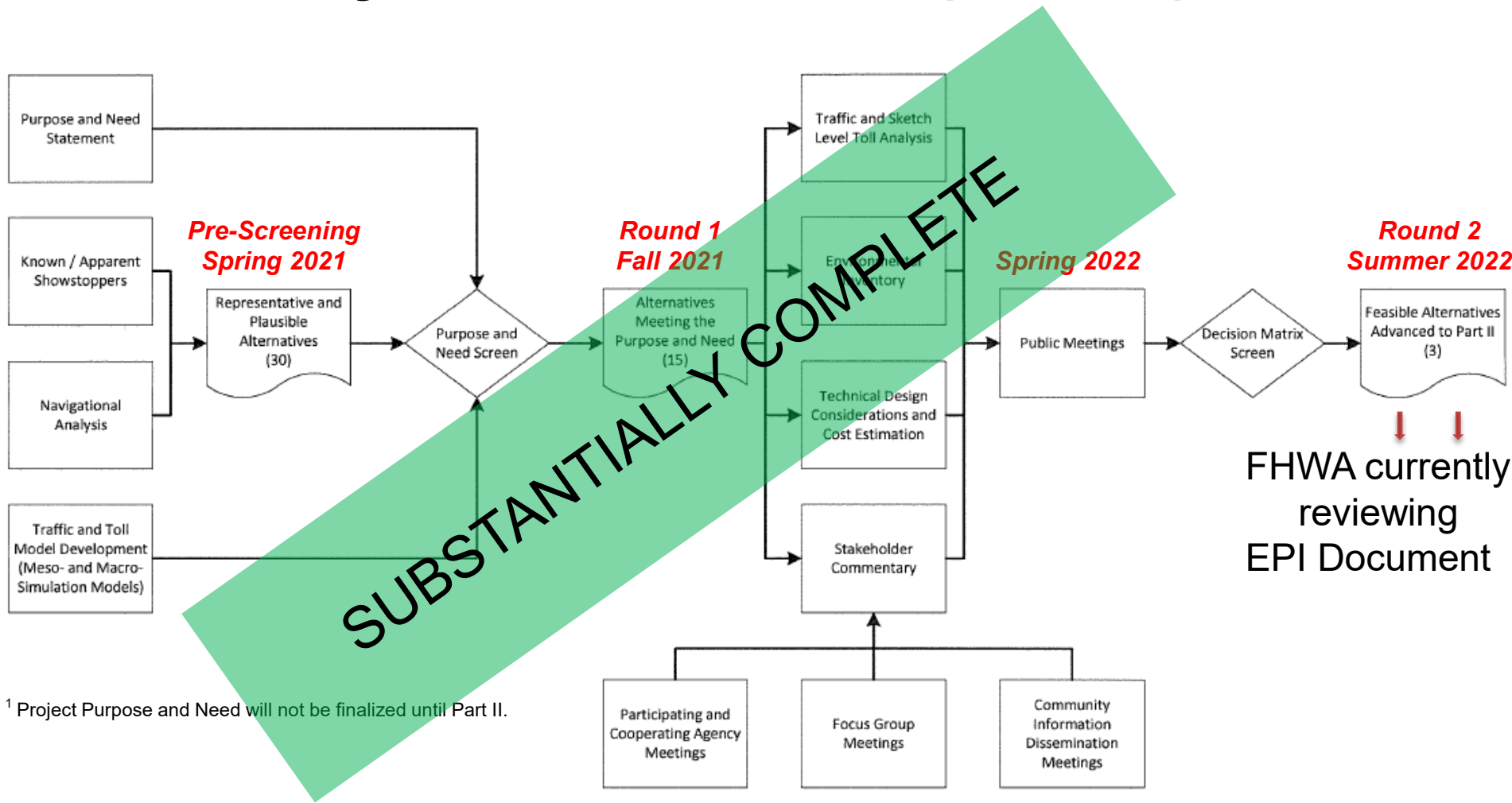
Project Overview

- Ultimate objective is to construct a new crossing of the Mississippi River in the Greater Baton Rouge Area
- **Part I: Enhanced Planning Study**
(July 2020 – Summer 2022)
- **Part II: Environmental Evaluation**
(Fall 2022 – Summer 2024)

Study Area



Project Workflow (Part I)



¹ Project Purpose and Need will not be finalized until Part II.



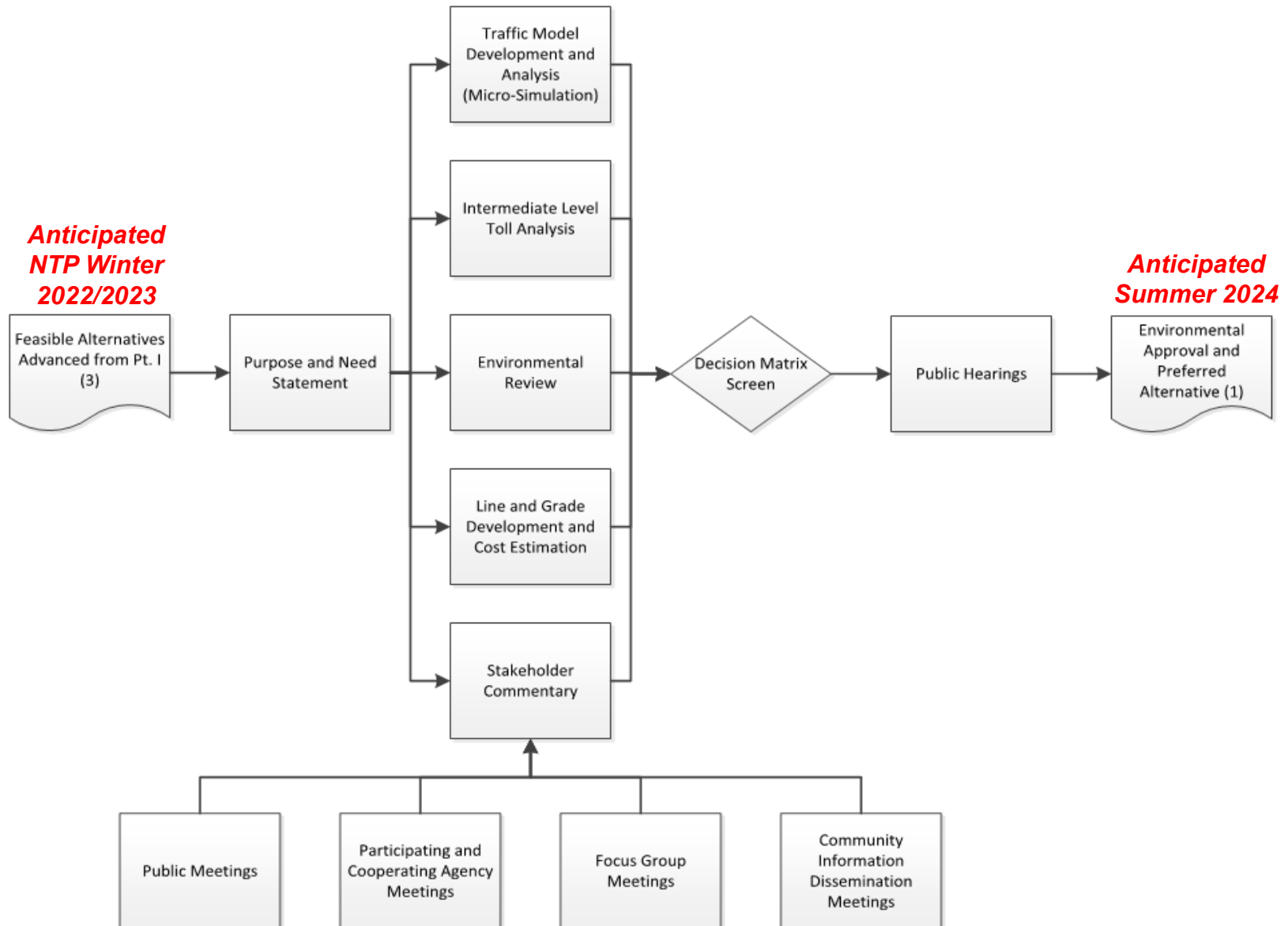
ROUND 2 ALTERNATIVES

- E-11-IV
- F-13-IV
- F-14-V

LEGEND

- RAILROAD TRACK
- BRIDGE CROSSING ALTERNATIVE
- CABLE SUPPORTED MAIN SPAN
- HIGH LEVEL APPROACH SPAN
- LOW LEVEL STRUCTURE OVER WETLANDS
- NO BRIDGE PIER ZONE
- NO BRIDGE ZONE (SPAN LENGTH EXCEEDED)
- NO BRIDGE ZONE (ANCHORAGES)

Project Workflow (Part II)



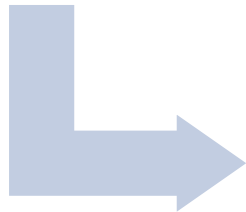
What is NEPA?

- The National Environmental Policy Act (1969) requires federal agencies to factor environmental considerations into their decision making.
- NEPA includes full range of activities to evaluate the environmental impacts of a proposed action.
- NEPA requires environmentally *informed* decisions.
- NEPA is a procedural statute and does not dictate a decision or require elevation of environmental concerns over other pertinent considerations.

NEPA & Transportation Decision making

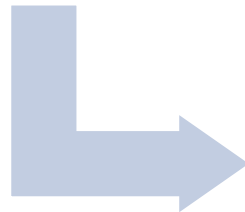
Project Development

DOTD is responsible for the identification and development of projects



Assessment of Impacts

DOTD evaluates the impact of the project on the environment



NEPA Document

DOTD prepares Document
As Lead Federal Agency, FHWA reviews/approves Document

Draft Scope for Part II (Environmental)

➤ Pre-NEPA Tasks:

- Surveys
 - LiDAR, Topo, SUE, Bathymetric
 - Geotech
- Line & Grade
- Conceptual Bridge Design
- Cost Estimates
- H&H

➤ NEPA Tasks:

- Public & Agency Outreach
- Document Preparation (EA/EIS)
- Field Surveys
 - Wetlands/T&E
 - Cultural Resources
 - Air, Noise, CSRP, Phase I ESA

➤ Traffic Refinement

➤ Intermediate Toll Study

**The timeline for Traffic and Toll Analyses will span from pre-NEPA through completion of NEPA*

Thank You!