

## FOR SALE - LOT 2

CS Real Estate Services has approximately 2.4 acres of land zoned for C-2 commercial. This parcel is conveniently located just South of Highway 44 in an established part of Grimes. Kenny Brook is in close proximity to local restaurants, retail, and grocery.

## LOCATION

265 SW Destination Drive, Grimes, Iowa 50111

Information contained here deemed reliable but not guaranteed by CS Real Estate Services

CASEY SHELTON

t : 515 499 6194

e : casey@csrealestateservice.com

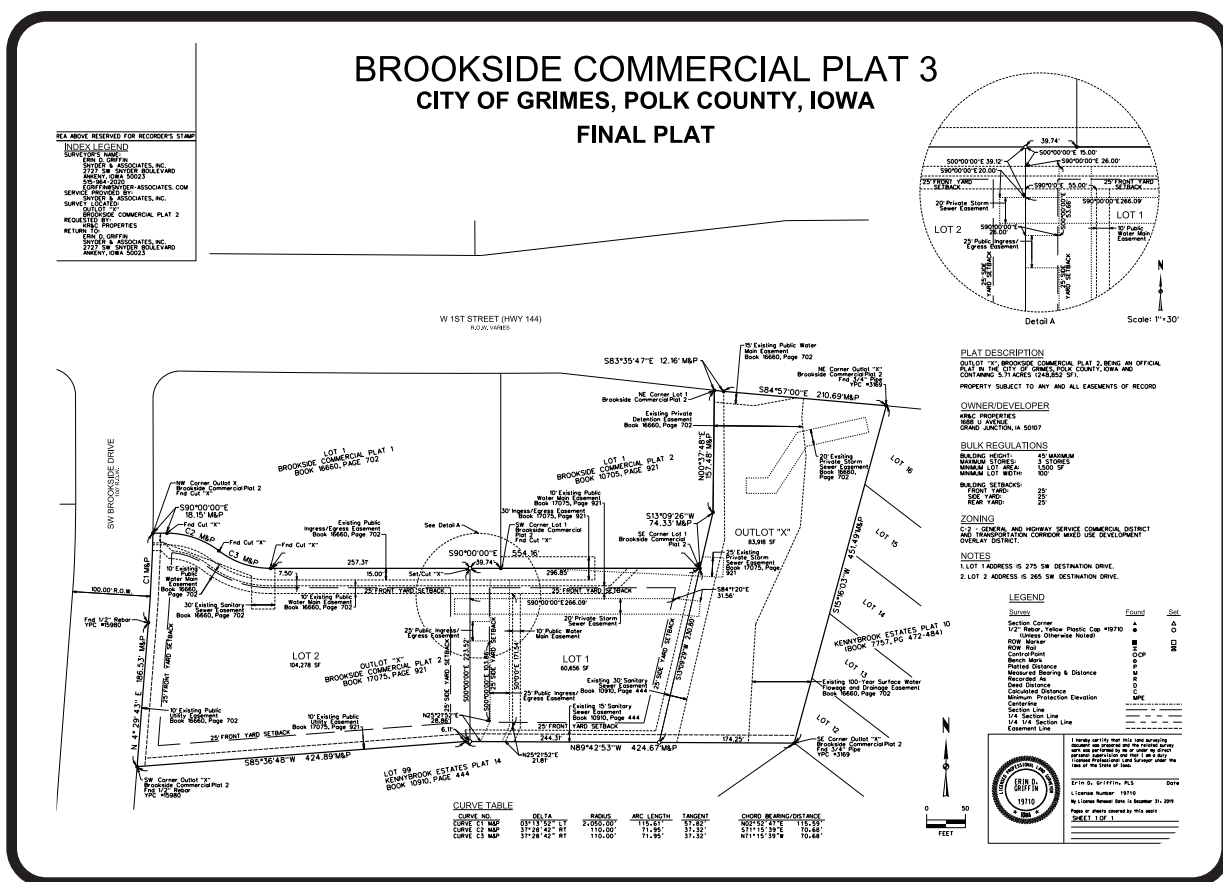
a : 9235 Swanson Blvd . Clive . Iowa . 50325

## AVAILABILITY

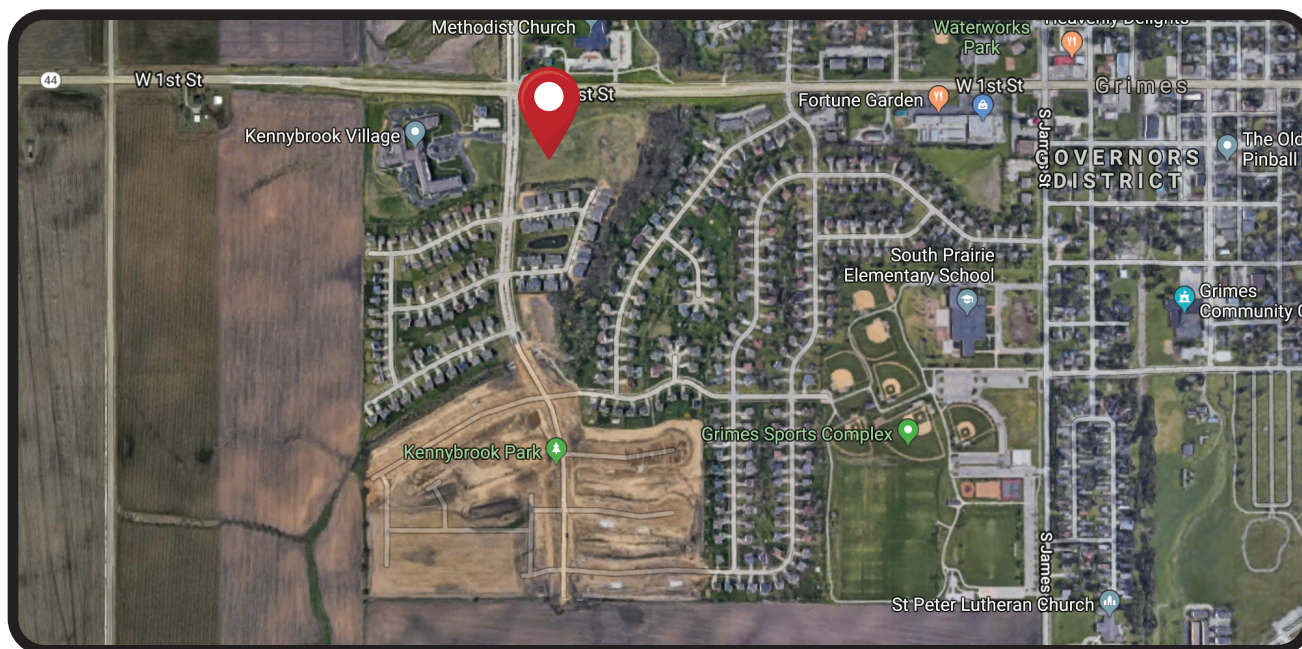
- Lot 2

## TERMS

- \$7.00 P/S/F



## LOCATION OVERVIEW



Information contained here deemed reliable but not guaranteed by CS Real Estate Services

CASEY SHELTON

t: 515 499 6194

e : casey@csrealestateservice.com

a : 9235 Swanson Blvd . Clive . Iowa . 50325