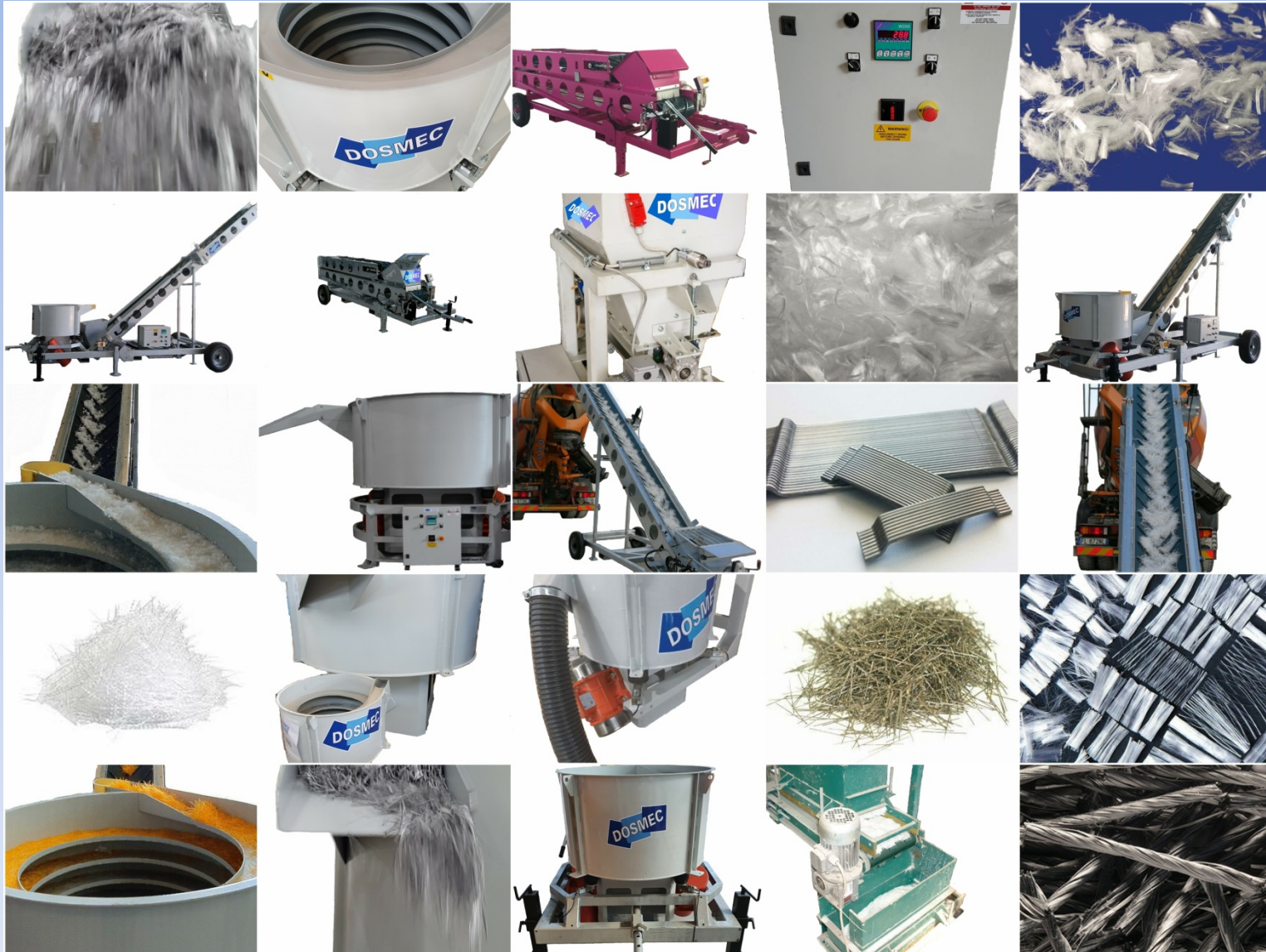




DOSMEC™ by *BetonMec*
AUTOMATIC FIBER DISPENSER SYSTEMS



Automatic Dosing : All the fibres.....where you need !





DOSMEC™

The company



Headquarter and Production Plant

Via dei Mattoni 12 – Z.I. – Marsciano – Pg – Italia

Tel. +393420118714 - dosmec3000@gmail.com – www.dosmec.com



About Us

Dosmec™ focuses on systems for dispensing and dosing bulk or bagged fibres together with other types of reinforcing or additive materials.

Dosmec™ www.dosmec.com is a division of BetonMec Srl www.betonmec.com which manufactures a wide range of machines and complete systems for the Concrete and Construction industries.

The brand was established in 2019 and the headquarter is located in Marsciano (near Perugia) in the real heart of Italy.

In our production plant of 20.000 sq.mt. we engineer and totally manufacture all our machines.





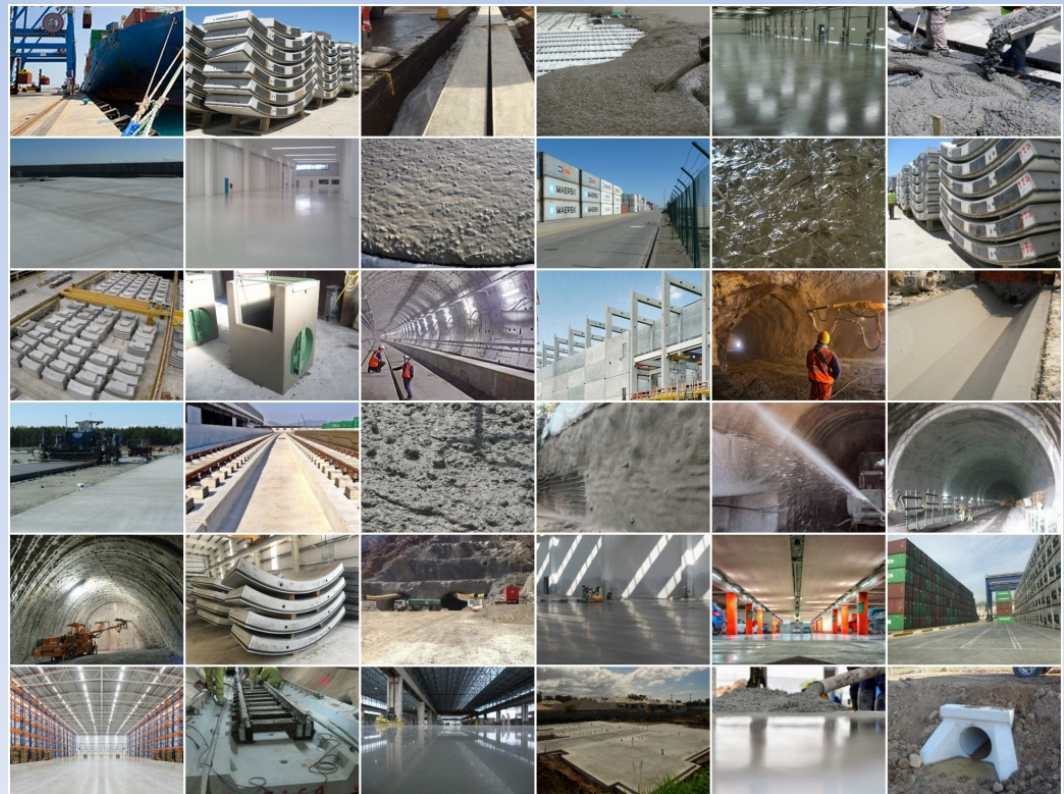
Applications Fields

Dosmec™ Fibre Dispensers and Dosing Systems are used in the following industries:

- Industrial and Civil Flooring
- Lining in Mines and Tunnels
- Ultra High Performance Concrete (UHPC)
- Infrastructure (roads, tracks, bridges)
- Precast Elements
- Ready-mix Concrete
- Agricultural buildings
- Civil Engineering

Special applications:

- ✓ Thermal insulation
- ✓ Soundproofing
- ✓ Waterproofing
- ✓ Coating
- ✓ Finishing
- ✓ Decoration





Dosing at its best!!!

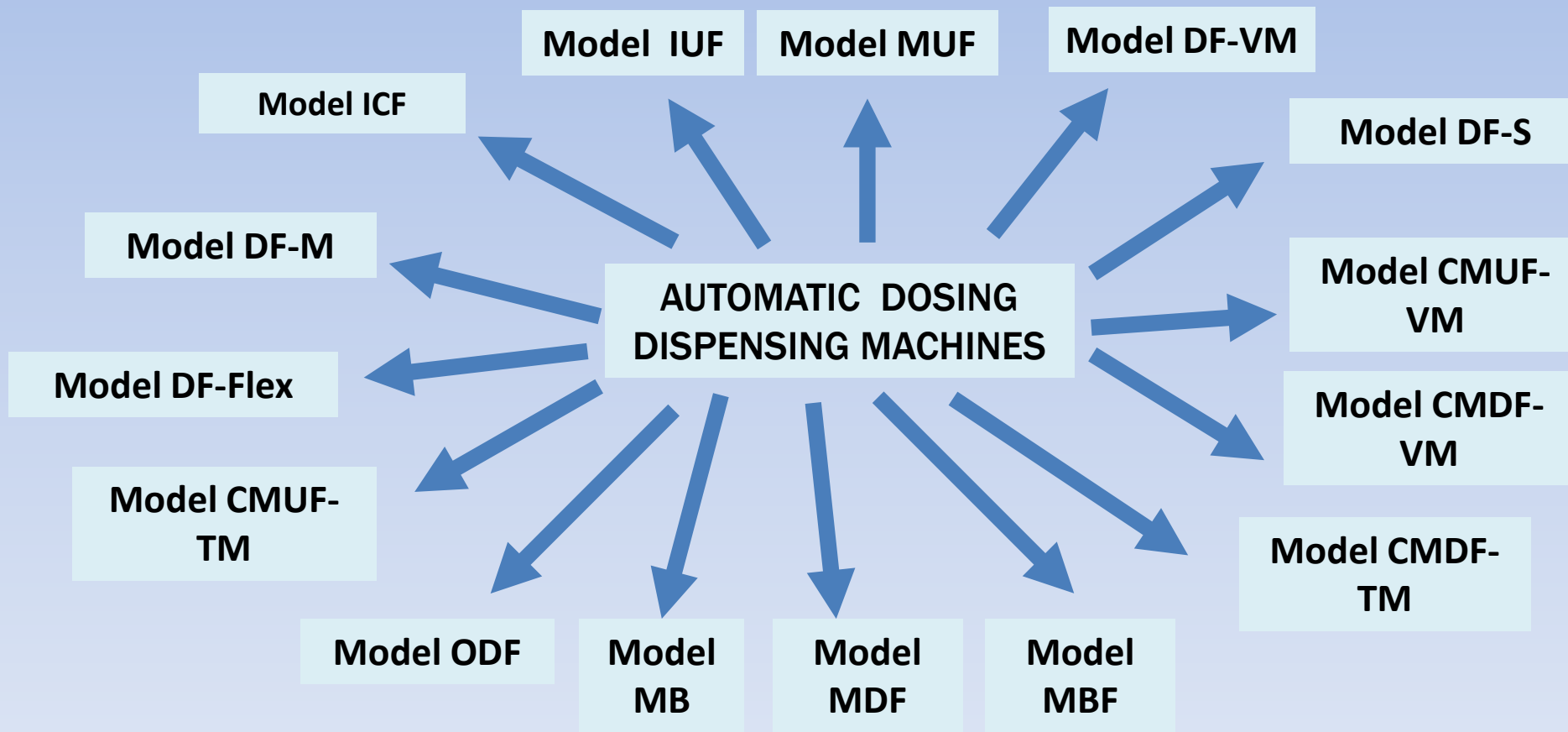


AUTOMATIC FIBER DISPENSER SYSTEMS



PRODUCT RANGE

Dosing At Its Best!





STATIONARY SYSTEMS LOADING MACHINES

❑ **Model ICF**

PREFEEDER : Loading Fibres from BigBag

Storage and feeding system to stock from 1 up to 6 BigBags or Supersacks and feeding them to the dosing machine via Special Inclined Belt conveyor.

Big stockage quantities/ Great Productivity

❑ **Model IUF**

PREFEEDER : Loading Fibres from Vibrating Hopper

Vibrating hopper machine that may hold a volume of fibres bigger or similar to the connected dosing machine.

It allows an uninterrupted and constant feeding so avoiding excessive accumulations in the hopper.

It is particularly suitable for very light microfibres or special design synthetic/metallic macrofibres.





STATIONARY SYSTEMS DOSING MACHINES

- ❑ **Model DF-Flex** : Based upon Vibrating Hopper System.
Untangling, weighing and dosing the fibres.
Both for Metal and Synthetic Fibres
- ❑ **Model DF-M** : Based upon Vibrating Hopper System.
Untangling, weighing and dosing the fibres.
Specific for Steel Fibres
- ❑ **Model DF-S** : Based upon Vibrating Hopper System.
Untangling, weighing and dosing the fibres.
Specific for Synthetic Fibres
- ❑ **Model DF-VM** : Based upon Vibrating Hopper System.
Untangling, weighing and dosing the fibres.
This Machine has been engineered to be mounted upon
Concrete Volumetric Mixers
Both for Synthetic and Metal Fibres with Max Ratio L/D:40





STATIONARY SYSTEMS DISCHARGING FIBRES

Model ODF-N

Fibre discharge by means of conveyor belt

The correct configuration is chosen according to the plant and the material used.

Model ODF-P

Fibre discharge by means of Vacuum System

The correct configuration is chosen according to the plant and the material used.





SPECIAL TOOLS FOR TESTING

- ❑ **Model TFM01** - To test the exact amount of metal fibre existing in a concrete sample
- ❑ **Modello TFS01** – To test the amount of synthetic fibre existing in a concrete sample (being engineered)





MOBILE DOSING SYSTEMS

- ❑ **Model MB** – Mobile Fibre Dispenser.
One-piece conveyor belt for Truck Mixer (MB-TM) or Volumetric Mixer (MB-VM)
- ❑ **Model MBF** – Mobile Fibre Dispenser for Truck Mixer (MBF-TM). Foldable conveyor belt for easy transport.
- ❑ **Model MUF** – Mobile Fibre Dispenser. Disentangles the fibres in situ so avoiding the ballings into the mixer. Eventually to be connected with a discharge system.
- ❑ **Model MDF** – Mobile Fibre Doser – Doses and disentangles the fibres in situ . Allows reporting of the quantity of fibres fibres used.
- ❑ **Combo Model CMUF** – Mobile Fibre Dispenser System .
To be used directly in Situ - It stores, disentangles and feed the fibres automatically into the Concrete Truck Mixer (CMUF-TM) or Volumetric Mixer (CMUF-VM)
- ❑ **Combo Model CMDF** – Mobile Fibre Dosing System .
To be used directly in Situ - It stores, disentangles, doses and feeds automatically into the Concrete Truck Mixer (CMDF-TM) or Volumetric Mixer (CMDF-VM).





AUTOMATIC DISPENSER AND DOSING MACHINES



Stop inaccurate and risky manual feeding !



*Dosmec™
Automatic Series DF
Storing/Untangling/Dosing and Feeding
the Fibres!*



Imagine feeding automatically bulk fibers into your batch!!

Do you have a **need for synthetic or metal fibers in your mix?**

Using bagged fibers and want to change, or just not sure how to do it?

We have the solution:

- Dosmec™ range of fiber dispensers can weigh fiber into your mix and can be added as an extra scale in your batching controller.
- Enter the quantity of fiber as a weight per cu. m. or print it in your batch formula.
- The fibers will be added to your aggregate belt as the aggregates discharge from the scale.
- Eliminate the manual labor of throwing fiber bags into the mix.
- Benefit from the lower cost of bulk fiber.
- Record fiber additions in your batch reports.





Stationary System Series DF

Our most popular machine is the DF model in its various versions (DF-Flex/DF-M/DF-S).

It uses the proven feeding system by means of the vibrating hopper.

The vibration unties any ball of fibre allowing them to move in an orderly manner along the vibrating spiral that goes up to the drain.

During this journey the excess of material falls to the bottom of the hopper.

The result is a continuous feeding and a loss in weight when the material falls on the aggregate belt or any other discharge system.

The machine can also be connected to the batching control panel or any other control system as an external signal.

There, the system can deliver a quantity of fibres in the exact percentage compared to the weight of the mixture and then print the production report.





Technical Data Sheet - Series DF

MODELS	TOTAL CAPACITY VOLUME	ESTIMATED CAPACITY VOLUME	DOSAGE KG/MIN	DOSAGE KG/MIN	WEIGHING CELLS	VIBRATORS	WEIGHT KGS (EMPTY)
FIBRES/MODEL			METAL FIBRES	SYNTHETIC FIBRES			
DF600	100	80	1-10	1-3	4	2X0,55 KW	150
DF800	235	180	5-20	2-6	4	2X0,55 KW	300
DF1000	470	380	20-80	3-10	4	2X0,75 KW	600
DF1200	790	650	20-100	3-12	4	2X0,90 KW	700
DF1500	1400	1.150	40-120	5-15	4	2X1,5 KW	900
DF1800	2.200	1.800	40-150	5-18	4	2X2,0 KW	1250
DF2000	3.000	2.500	40-200	5-25	4	2X2,2 KW	1550
DF2000MX	3.000	2.500	40-200	---	4	2X3,8 KW	1700



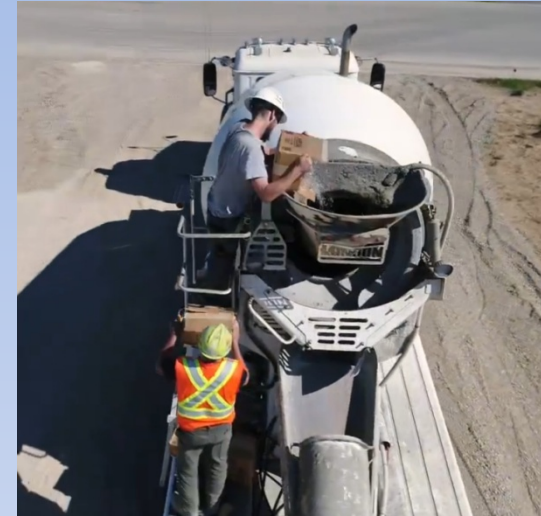
Mobile System Series DFVM

DF- VM is the new dispenser of Dosmec™. It has been specially designed and produced to be fixed upon volumetric mixers.

Thanks to its limited dimensions DFVM allows to dose and feed fibres (metallic and synthetic -Ratio max L/D : 40). The fibres go directly into the mixing auger without the need of other external devices or manual feeding. The operator only need to refill the hopper when empty!

The control panel can be connected to the Volumetric Mixer Panel or any other system control as an external signal.

In this way the system can deliver a quantity of fibres in the exact percentage compared to to the weight of the mixture and then print the production report.



No more !!!!



Automatic Dosing System !!!!



Fibre Conveyor Series MB

The one-piece conveyor belt Dosmec™ Model MB is the simplest system for conveying the fibres from the ground level to a higher discharge level.

It is sized to meet the needs of truck mixers or volumetric mixers. MB automatically transports the fibres where they are needed.

MB may be carried from one site to another!!



Stop risky manual feeding !!!!



*Dosmec™
Model MB/MBF
Automatic Fibre
Conveyor Belts*



Mobile Fibre Conveyor Series MBF

The Conveyor Belt Model MBF is the fully mobile solution for conveying the fibres from the ground level to a higher discharge level.

It is sized to meet the needs of truck Mixers.

MBF is fully mobile in the sense that can be easily moved from one construction site to another by folding the belt (manually or electrically – option).



*Fiber
Automatic
Conveyor
MBF On Site
!!*



*MBF is easily
folded to be
carried from
one place to
another !!*



Model MBF

Technical Data Sheet

DOSMEC™ MBF	TECHNICAL SPECIFICATIONS
Belt Chevron type : 0.45 x 6 mt.(18" x 20 ft)	Manual/Electric (Option) hydraulic pump.
Power 2.2 Kw (3 HP) with ON/OFF switch and overload trip	Towing length 4,63 mt. (16 ft)
Speed 60 mt (200 ft) per min.	Discharge Height (Truck Mixers): 3,90 mt. (13 ft.)
Drive and idle drum diam. 200 mm (8")	Discharge Height (Volumetric Mixers): Adjustable
Frame folds hydraulically for travel	



Mobile Fibre Dispenser Mod. MUF

MUF is a mobile device to unravel In-situ the fibres automatically. The machine can be connected to a discharge system (Pneumatic or conveyor belt) present at the construction site.

MUF does not dose the material but thanks to the vibrating hopper system it allows to avoid the formation of tangles and then send the fibres to the mixer in a constant flux and at a fixed or controllable speed.

It is a simple and low-cost method to effectively and automatically feed the fibres (concrete mixer or volumetric mixer) from the ground level.





Model MUF

MUF is composed of :

- The Model IUF1000 is a vibrating hopper that stores and unravels the fibres.
- The machine is secured to a trailer so that it can be securely positioned in the operational phase but it can also consequently transported from one site to another.

DOSMEC™ - FIBRE DISPENSER IUF1000
Hopper Loading Volume : 470 Liters (15 cu.ft)
Hopper Realistic Volume : 380 Liters (12,2 cu.ft)
Vibrators : N°2 x Kw 0,75 (2,0 HP)
Control Panel: Controls all functions with 12 semi-automatic recipes or connecting to separate controller.
Feed rate (Metal Fibres): 20-80 Kg (44-180 lb) per min.
Feed Rate (Synthetic Fibres): 3-10 Kg (6,6 -22 lb) per min.



Mobile Fibre Doser Mod. MDF

MDF is a mobile device for unravelling and dosing fibres automatically On site.

The machine can be connected to a discharge system (pneumatic or conveyor belt) present at the construction site.

MDF allows to avoid the formation of tangles and then send the unraveled fibres to the mixer in a constant manner .

At the same time, it doses the correct amount of fibres and allows a report of the fibres used.

It is a simple and low-cost method to effectively and automatically feed the fibres (in concrete mixer or volumetric mixer) from the ground level.





Model MDF

MDF is composed of :

- The Model DF1000 Dosing Machine is a vibrating hopper that unravels and doses fibers.
- The machine is secured to a trailer so that it can be securely positioned
- in the operational phase but can also subsequently transported from one site to another.

DOSMEC™ - DOSING MACHINE DF1000
Hopper Loading Volume : 470 Liters (15 cu.ft)
Hopper Realistic Volume : 380 Liters (12,2 cu.ft)
Vibrators : N°2 x Kw 0,75 (2,0 HP)
Weighing System : Decumulative
4 Weighing Cells : 1200 Kg (2650 lb)
Control Panel: Controls all functions with 12 semi-automatic recipes or connecting to separate controller.
N° 1 VDF Inverter
Feed rate (Metal Fibres): 20-80 Kg (44-180 lb) per min.
Feed Rate (Synthetic Fibres): 3-10 Kg (6,6 -22 lb) per min.



Mobile Combo CMUF-TM Untangle and Feed Fibres Automatically

Combo CMUF is a mobile machine that untangles and feeds the fibres automatically. And it is a machine you can use directly In Situ!

CMUF does not dose the material but thanks to its vibrating hopper system prevents the formation of tangles while feeding the fibres smoothly at a controllable speed. It is a simple and relatively low-priced method to store and feed automatically the Fibres (into Truck Concrete Mixers or Volumetric Mixers) starting from the ground level.





Combo CMUF-TM Technical Data Sheet

- ❑ Combo CMUF is composed of :
- ❑ Model IUF1000 is a vibrating hopper that stores and unravels the fibres.
- ❑ Conveyor Model MBF is a mobile fixed or foldable belt to convey the fibres smoothly to the desired point.
- ❑ Both machines are fixed on a trailer to be positioned permanently or carried many times from one site to another.

DOSMEC™ IUF 1000 SPECIFICATIONS	DOSMEC™ MBF-TM SPECIFICATIONS
Hopper Loading Volume : 470/380 Liters (16/13 cu.ft)	Belt Chevron type : 0.45 x 6 mt.(1,5 x 20 ft)
Vibrators : n°2 X Kw 0,75 (2,0 HP)	Power 2.2 Kw (3 HP) with ON/OFF switch and overload trip
Feed rate (Metal Fibers): 20-80 Kg (44-180 lb)/min.	Speed 60 mt (200 ft) per min.
Feed Rate (Synthetic Fibers): 3-10 Kg (6,6 -22 lb)min.	Drive and idle drum diam. 200 mm (8")
Weight (Empty): Kg. 600 (lb.1300)	Frame folds hydraulically for travel
	Towing length 4,63 mt. (16 ft)
	Discharge Height (Truck Mixers): 3,90 mt. (13 ft.)



Mobile Fibres Doser and Feeder Combo CMDF-TM

Combo CMDF-TM is a mobile device that automatically doses, disentangles and loads the fibres. And it is a machine you can use directly In Situ!

CMDF –TM doses the material thanks to its vibrating hopper that is supported above 4 weighing cells.

It is the simplest and cheapest method to dose and feed automatically the fibres (into Truck Concrete Mixers or Volumetric Mixers) from the ground level. It contains an autonomous control panel to manage all the commands.

The system delivers an exact quantity of fibres into the mixture and then print a report (option).





Combo CMDF

Technical Data Sheet

Combo CMUF-TM is composed of :

Model DF1000 is a vibrating bowl feeder supported upon 4 weighing cells. It stores, untangles and doses the fibres.

- ❑ Model MBF is a mobile foldable belt to convey the fibres smoothly and steadily to the desired location.
- ❑ Both machines are fixed upon a trailer to be positioned permanently or moved many times from one site to another.

DOSMEC™ MODEL DF1000 SPECIFICATIONS	DOSMEC™ MBF SPECIFICATIONS
Hopper Loading Volume: 470 Liters (15,6 cu.ft) Vibrators: N° 2 x 0,75 Kw (2 Hp)	Belt Chevron Type: 0,45 x 6 mt. (18" x 20 ft.) Power 2,2 Kw (3Hp) with ON/OFF switch and overload trip.
Weighing System : Negative 4 Weighing Cells: 1200 Kg (2650 lb)	Speed 60 m. (200 ft.) per min. Drive and Idle drum diam. 200 mm (8")
Control Panel : Controls all functions with 10 semi-automatic recipes or connecting to separate controller	Frame folds hydraulically for travel
Output: Load Cell Signal to Control System Feed Rate (Metal fibers) 20-80 Kg (44-180 lb) per min.	Towing length 4,63 m. (16 mt.) Discharge Height (Truck Mixers): 4,0 m. (13 ft.)
Feed Rate (Synthetic fibers) 3-10 Kg (6,6-22 lb) per min.	Discharge Height (Volumetric Mixers): Adjustable
Weight (Empty): Kg. 600 (lb 1300)	



Dosing at its Best!

For further information, test with your
fibres

Please contact us :

Roberto Soriani

Sales & Mktg Manager

dosmec3000@gmail.com

www.dosmec.com

Mobile: +39 3420118714