

Black Horse Media Catalogue

Find Your Own Art Style

www.blackhorse.media



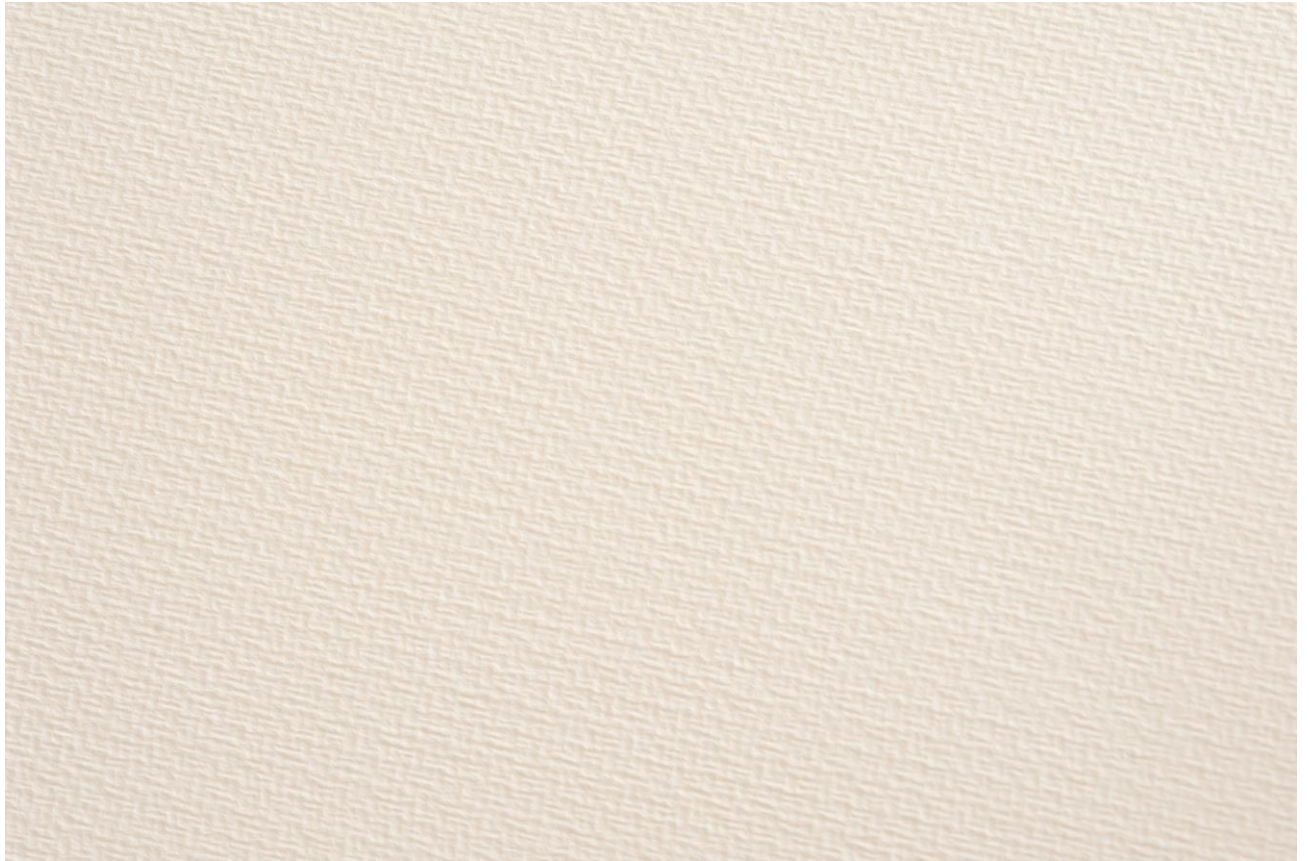
Content

About BHM	03
Cotton or Linen	04 – 06
Canvas Size	07
<i>Painting Method</i>	
Acrylic Painting	08 – 09
Oil Painting	10 – 11
Chinese Ink Painting	12 – 13
Watercolour	14 - 15
Other Painting Method	16
<i>Painting Styles</i>	
Landscape	17 - 19
Beach & Seascape	20
Calligraphy	21
Abstract	22 - 25
Animal	26
Portrait	27
Still Life	28
Aircraft	29 - 31



About BHM

Our mission is to support artists on their journey of self-expression, driven by our core values of respect, bravery in the face of difficulty, and excellence in all areas of service. Black Horse Media are here to help artists reach their full creative potential and share their voice with the world.



What is good to know when choosing the canvas?

- Not every canvas is suitable for each paint
- Canvas varies also in waterproof and holding the paint
- Consider the type of painting you are going to use and what kind of style.



Cotton

Cotton is a soft, fluffy fibre that grows in a boll or protective capsule around the seeds of cotton plants. The advantage of cotton is that it is affordable and stretches very easily. A properly prepared cotton canvas will last a long time and is the most popular surface for oil and acrylic painting, although it is considered too flexible for very large paintings. It is classified according to its weight and surface texture. It is possible to stretch cotton tighter than linen without straining the wooden support around the canvas.



LINEN

Linen is made from the fibres of the flax plant and top-quality flax is harvested mainly in Western Europe. The threads that make up linen are less prone to expansion or contraction due to moisture. Linen retains its natural oils, which helps to preserve the fibre's flexibility and stops the canvas from becoming brittle. It is also regarded as having a more "natural" weaved finish than cotton.

Canvas Size

Standard Canvas Size

Centimetres (approx.)

12.5 x 12.5	50 x 50	100 x 50
15 x 15	60 x 25	100 x 70
17.5 x 12.5	60 x 30	100 x 75
20 x 20	60 x 45	100 x 100
25 x 20	60 x 50	110 x 60
25 x 25	60 x 60	120 x 30
30 x 25	75 x 30	120 x 60
30 x 30	75 x 50	120 x 75
35 x 25	75 x 60	120 x 90
35 x 35	75 x 75	120 x 120
40 x 30	90 x 30	125 x 100
40 x 40	90 x 45	150 x 40
45 x 15	90 x 60	150 x 75
45 x 35	90 x 75	150 x 100
45 x 45	90 x 90	150 x 120
50 x 20	100 x 30	180 x 60
50 x 40	100 x 40	180 x 90

An abstract acrylic painting featuring a vibrant color palette of blue, orange, yellow, red, and purple. The composition is characterized by thick, expressive brushstrokes and a layered, textured surface. A prominent vertical stroke of dark blue runs down the center, intersecting with horizontal bands of orange and yellow. The overall effect is one of dynamic energy and emotional intensity.

Acrylic Painting



Acrylic is made of **pigment suspended in a polymer emulsion**. This gives the paint much different properties than oil-based paint or watercolor. Acrylic paint is better for people who want their paint to **dry faster**. Where oil paint can take a very long time to dry, acrylic paint can be dry within hours. It's also **resistant to water** more than watercolor or oil paint, meaning that it's less likely to get damaged by moisture in the short term. The main downside to acrylic paint is that it's much less versatile when it comes to mixing and combining colors than the other options.



Oil Painting



Many famous paintings today were painted using oil-based paints. The Mona Lisa is just one famous example of many. Oil paints work by **suspending pigment particles in an oil base**. Because of its makeup, it's a great choice if you're thinking about *bright, vibrant colors* or *creating a picture with depth*. They're also much easier to mix than acrylic paints and mixing them often results in a much wider palette of colors. The biggest downside to oil-based paints is **that they take longer to dry** than acrylic or watercolor paints, taking days or even weeks to fully dry.

生落魄已成第
齋嘯元几筆底
三才實乃好
天此



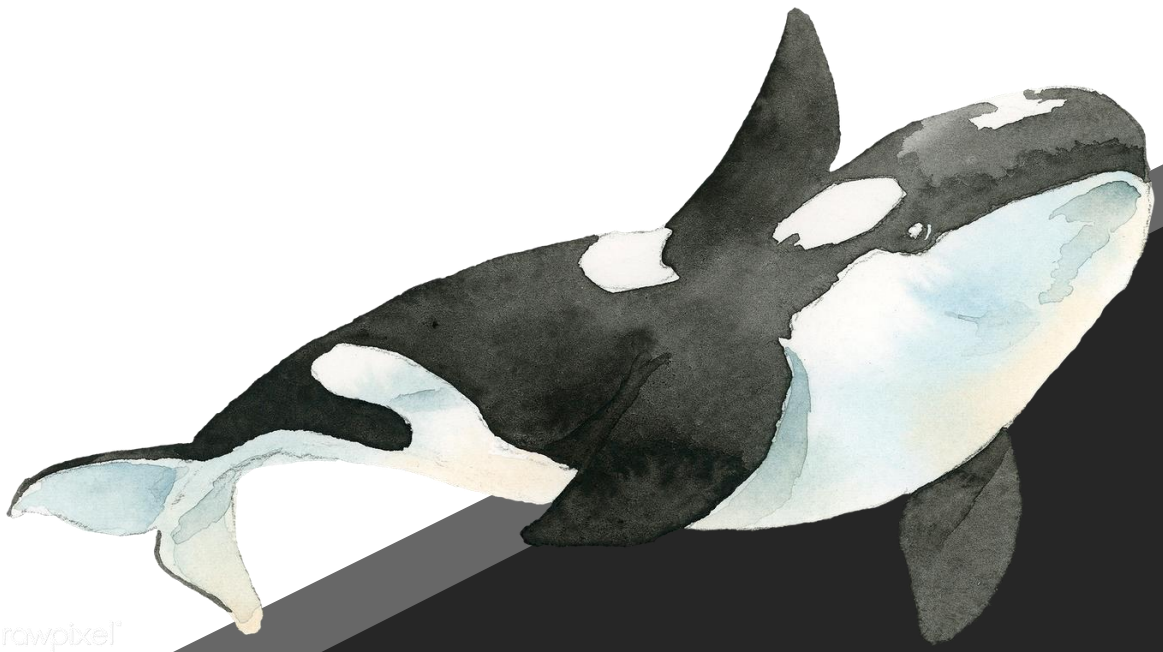
Chinese Ink
Painting



Ink wash painting or the ink wash technic is a type of brush painting that uses black ink – as used in calligraphy – in different concentrations. **This special drawing technic is created using a brush, dipped into ground ink, then submerged in water before being painted onto a canvas of paper, silk or traditional Chinese rice paper. Because of that the focused and monotone nature of the paintings are created composed of just black and white.** Ink wash paintings or shui-mo paintings often feature trees, flowers, landscapes, animals, birds and people.

The background is a soft, multi-colored watercolour wash. The colors transition from warm tones (orange, red, yellow) on the left to cooler tones (blue, green, purple) on the right. A white circle is positioned in the upper left quadrant, containing the word "Watercolour" in a simple, black, sans-serif font.

Watercolour



It's created by **pigment suspended in water**. Watercolor paint can **dry fast**, but it's incredibly delicate when it comes to standing up to even a single drop of water. Because of this, watercolor paints are the **least resistant** option among the paints. That being said, it can be used to create unique images unlike anything else created by oil or acrylic, images that often have a quality all their own.

Looking for other drawing method ?



**Pencil
Stretching**

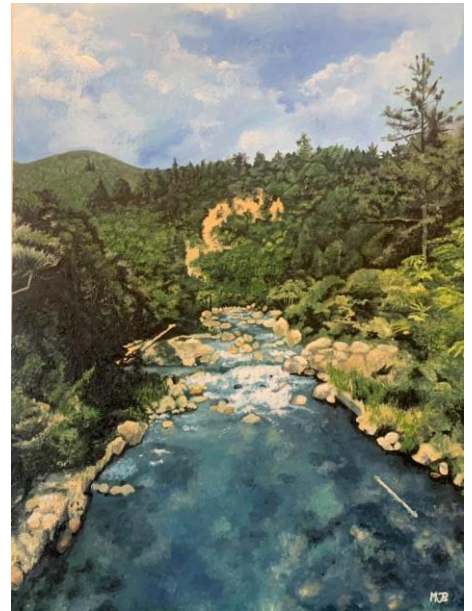
**Charcoal
Drawing**



Landscape



Mandy Boyd
Falling in to the Deep
Suitable for Corridor

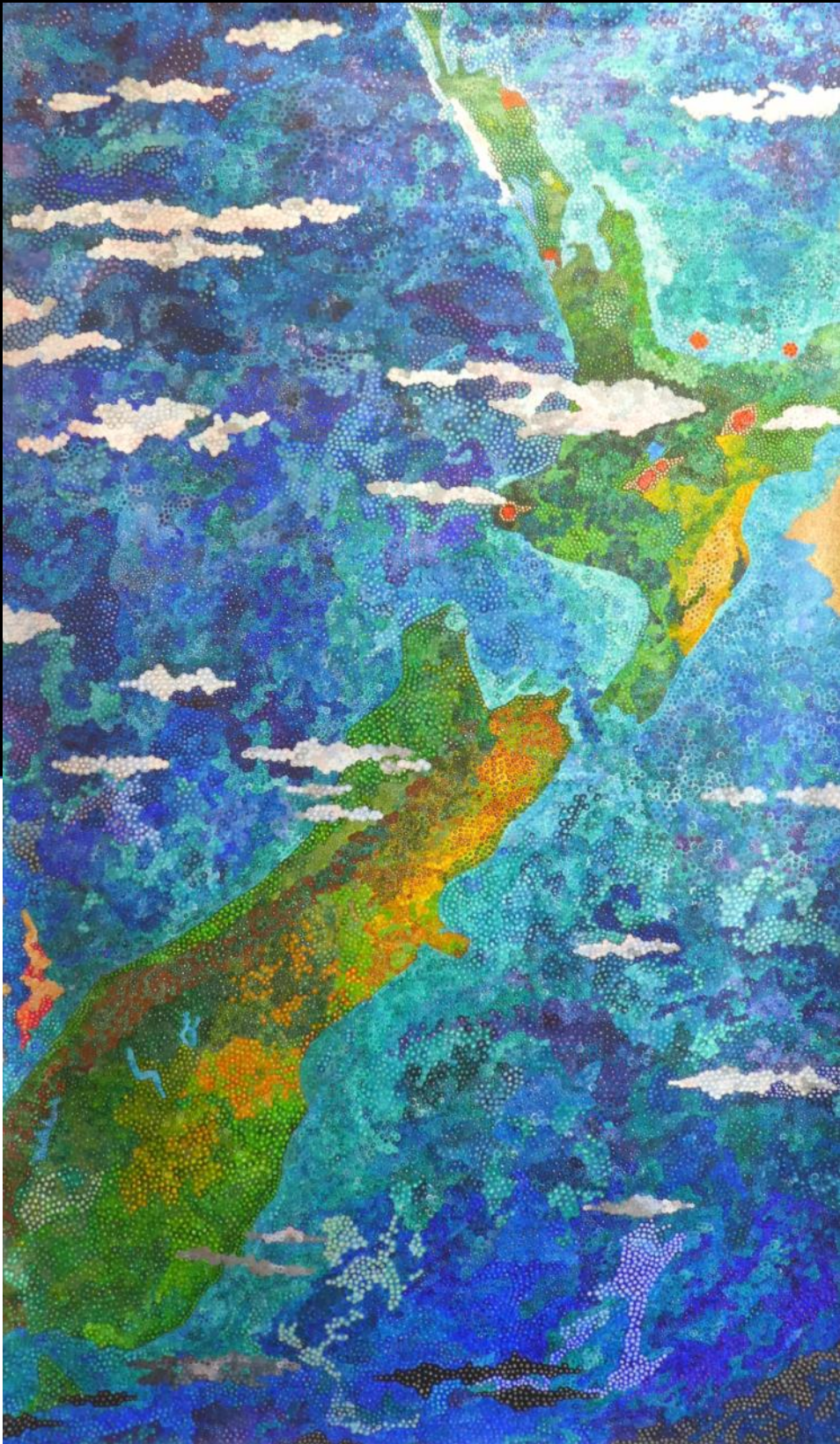


Mandy Boyd
Serenity
Suitable for Lounge/ Study
room



Colette O'Kane
Sh' boom
Suitable for Corridor/ School

New Zealand



Colette O'Kane

Na Hinemoana

Suitable for Office/ Main Hall



Michael J Osborne
Milford Sound
Suitable for Lounge/ Study
room



Michael J Osborne
Upper Hermitage West Coast
River
Suitable for Lounge/ Study
room

Beach & Seascape



Jenney Caldwell

Empty Beaches

Suitable for Lounge/ Office/ Study room



Kim Mehlhopt

Oil on Canvas

Suitable for Corridor/ Lounge



Tom S. Hageman

View on the Isle Gomera

Suitable for Lounge/ Office/Study room

Calligraphy



Kathy Li
“Jing” – Calm
Suitable for Restaurant/ lounge

Abstract



Rustem Ibatullin
Weightlessness
Suitable for Corridor



Damon Puddy
Flight Patterns
Suitable for Lounge/ Dining
room



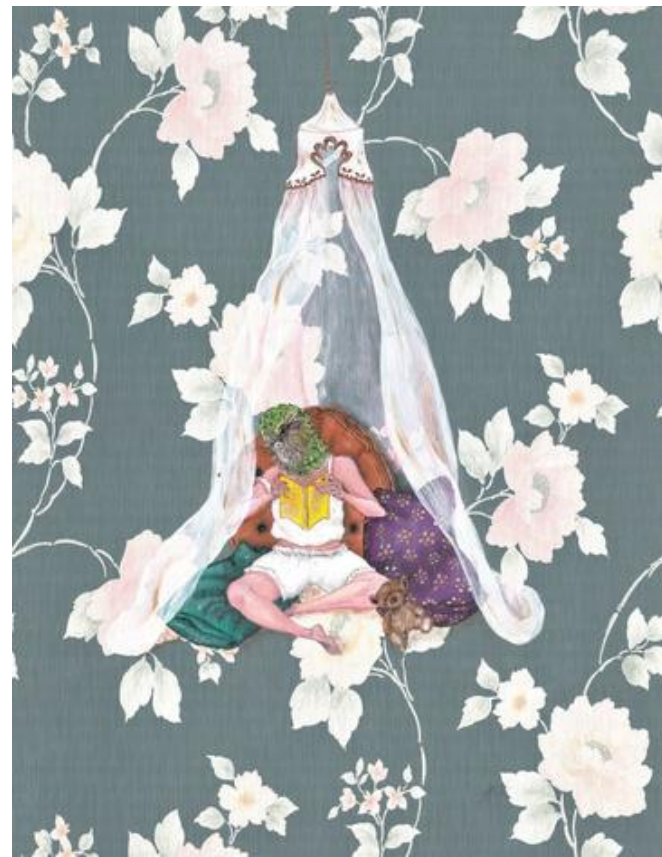
Damon Puddy

Fruit Salad Rainbow

Suitable for Corridor/ Lounge/ Dining Room



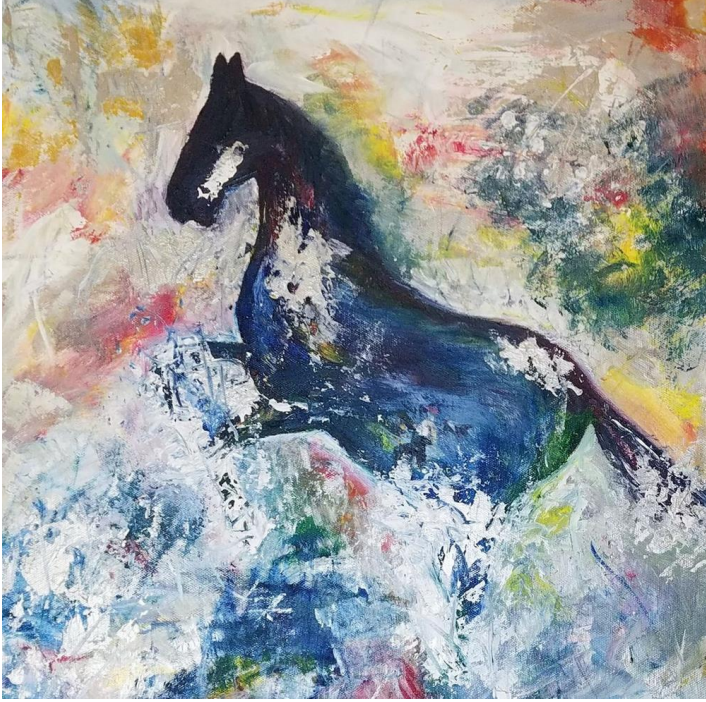
Frankie Bakker
Unwind Collection – Clouded
Dreams
Suitable for Corridor



Frankie Bakker
Unwind Collection – Cushion Net
Suitable for Study room



Frankie Bakker
Life Collection – Chick
Suitable for Corridor



Kathy Li
Black Horse
Suitable for Restaurant/
Lounge



Acrylic on Canvas
Suitable for Corridor/Lounge



Shankar Desai

Artech

Suitable for Corridor



Jenny Caldwell

Friday is Calm

Suitable for Bedroom/ Corridor/ Lounge/ Dining room



Michael J Osborne
De Havilland 82 Tiger Moth 43
"Landing at home"
Suitable for Office/ Corridor



Michael J Osborne
RNZAF Lockheed C-130
Hercules - "Airborne and
Ready"
Suitable for Office/ Lounge



Steven Heyen
The late shift
Suitable for Corridor/ Lounge



Rustem Ibatullin
Atmospheric
Suitable for Corridor/ Office



Steven Heyen
Late in the day
Suitable for Corridor/ Lounge



Black Horse Media
is registered trademark

www.blackhorse.media
contact@blackhorse.media