

Telephone (clubhouse): 8712 7755 Club email: bdwwsec@outlook.com

Postal address:

The Berwick District Woodworkers Club Inc
PO Box 921, Berwick, Victoria, 3806

Location:

The Old Cheese Factory, 34 Homestead Road Berwick, 3806
Inc. No A0012122U



Welcome to the Newsletter for December 2024



DATES TO REMEMBER **Committee Meeting** – Wednesday 8th January - 1:00pm in clubroom. **General Meeting** - Wednesday February 19th, 1:00pm in clubroom. As always it will be preceded by a free BBQ lunch at 12 noon. Hope to see you there. **Welcome Back BBQ** Wednesday 15th January 2025, 5.00pm. BYO Meat, drinks and nibbles. Club will supply bread and salads.



PRESIDENT'S MESSAGE.

Hi all. Well, that's the end of another year and what a fantastic end it was, I must congratulate all members who participated in the manufacture of the toys and who took part in our weekend. But a special thanks to **Simon, Julie, and Carol** for their exceptional organisation of the moving and allocating of the toys on Friday morning. To be able to move in excess of 900 toys and allocate them to the charities in about 2 hours was incredible. Saturday night was a lot of fun with "roaming Don" creating his usual bit of havoc. I think we all had a great time. Sunday went smoothly and without any hiccups, the speeches by the politicians were well received, as was the charities response, and the choir was fantastic, all in all a great day.

The sad part of my report is that the Function room will be unavailable to us next year due to renovations, so we will have to give a lot of thought to what we will need to do with regards to our Gala program. There will be a lot of

discussion by the committee to try and find a solution.

On Friday December 20th, the council's rental department officers will be visiting the club rooms for an inspection; in light of this, the club will be closed on Thursday the 19th for clean up, so if you have a bit of time to spare any help would be appreciated.

That's all from me,

I hope you all have a very merry Christmas and a wonderful new year.

Brian.

Some of the club members with a few of the toys and **Anne-Marie Hermans** (in the red scarf).



CLUB INFORMATION

MEETINGS:

COMMITTEE

Wednesday January 8th, 1:00pm

GENERAL

Wednesday February 19th, 1:00pm

MARKETS – Volunteers needed

Sunday 22nd December Farmers Market

Saturday 11th January 2025 Farmers Market

Sunday 26th January 2025 Farmers Market

Newsletter Contributions

All material for the Club's monthly publication is to be submitted by e-mail to ricels@bigpond.com, by hand, or by phone to Elsie Hoare the editor by the 15th of each month. Letters to the editor must be sent to the committee.

Committee of Management:

Position	Name	Phone
President	Brian Crowe	0438 012 155
Vice President	Ron Bolton	0413 152 391
Secretary	Don Buchanan	0431 313 998 email: bdwwsec@outlook.com
Treasurer	Peter Ball	0425 725 875

Committee	Phone
John McMahan	9796 1097
Ken Whitefield	0402 256 134
Michael Berry	0466 812 717
Ian Deans	0403 419 774
Simon King	0477 831 318
Peter Shuttleworth	0402 680 605
Julie Robinson	0481 088 390
Carol Goddard	0422 395 565

Contacts

Equipment authorisation approved members - *Brian Crowe, Don Buchanan, Simon King and Ron Bolton.*

Health and Safety Coordinator – *Peter Shuttleworth*

Machinery Maintenance Coordinators. - *Ron Bolton & Simon King*

Timber Coordinator - *Martin Van Diemen*

Screws - *Martin Van Diemen*

Paint - *George Young*

Toy Coordinators - *Simon King & Ron Bolton*

Functions Coordinator - *Ken D. Barnes*

Gala Day Coordinator - *Brian Crowe*

Annual Expo - *John McMahan*

Farmers Market Coordinators - *Martin Van Diemen & Don Buchanan*

Public Relations - *Don Buchanan*

OCF Contacts - *Brian Crowe & Don Buchanan*

Webmaster - *Ron Bolton*

Newsletter Editor - *Elsie Hoare*

Members' Welfare Coordinator - *Ken Whitefield*

Librarian - *Simon Robbins*

Men's Shed Coordinator - *Wayne Lucas*

Membership Fees:

	Joining	Annual
Individual	\$40.00	\$65.00
Family of 2	\$60.00	\$100.00
Family of more than 2 please enquire		

No Attendance Fee.

Tea & Coffee complimentary.

Paying your Membership Fees

Members can pay either direct at club or by EFT bank transfer to WBC Berwick BSB 033 609, Acct # 41 6074. Please remember to put your surname as a reference.

Safety First

For safety reasons, there must always be **three** members present whenever the workshop is being used.

Clubrooms and Workshops Open Hours

Weekly	Hours	Leader
Monday	9:00 am – 1:00 pm	Ron Bolton
Tuesday	9:00 am – 1:00 pm	Michael Berry
Wednesday	9:00 am – 4:00 pm	Don Buchanan
Wednesday Evening	4:00 pm – 7:00 pm	Bill Bradshaw
Thursday	9:00 am – 1:00 pm	Brian Crowe
Friday	9:00 am – 1:00 pm	Ron Bolton
Saturday	9:00 am – 1:00 pm	Ron Bolton
Sunday Farmers Market	10:00 am – 1:00 pm	TBA

Berwick Woodworkers wish to thank **Gary Maas MP** State Member for Narre Warren South, and his staff for their ongoing support in printing this newsletter for us.



OUR GALA WEEKEND – from Don Buchanan

As you know this weekend was the culmination of all your work making toys for this year.

Firstly, a **big thank you** to all those members who helped to make those 900 odd toys.

Thank you to our new Toy Coordinators – **Simon King, Julie Robinson** and **Carol Goddard** and their assistants.

The logistics of getting all the toys from the container and paint room to their display sites ran smoothly.



And another thank you goes to all the members who helped with the moving and setting it all up. And not to forget the effort that **Ken Barnes** has put into the organising of the Gala days over the past years. Thanks Ken!

The Gala Dinner.

Our Gala dinner was another successful night. Attended by 62 of our members.

The caterer, Lisa Kent, and her 2 helpers dished up a magnificent 2 course meal.

As usual a number of members went back for seconds.

Our “Talent Time” segment was a lot of fun.

We were entertained with a variety of recited poems, songs and jokes.

The highlight was **Ron Bolton** playing one of his own written instrumental arrangements on his guitar.

Thanks to all those members who participated.



Gala day Sunday

The day saw a good attendance of politicians, namely **Jason Wood, Brad Batton, Ann-Marie Hermans,** and **Zahid Safi.**

We were delighted to welcome our new Mayor, **Stefan Koomen** and Acoonah Ward councillor, **Scott Dowling.**

Parents of the Berwick School Choir were present to see their children sing. A good number of members were present as well.

Our President, **Brian Crow**, opened the formalities thanking all attending and then passed it on to **Jason Wood** with his opening speech.

Brad Batton then spoke and presented our toys to our Charities. **Amanda Flemming** from the Salvation Army accepted the toys on behalf of the Charities.

The **Berwick Primary School** sang. The first bracket was some popular songs while in the second bracket they sang Christmas carols.

At the end of their session, each child was given a show bag. The teachers were also given a gift as well.

Overall, it was another great Gala Day.

Clearly, the group at right were enjoying the singing by the children from Berwick Primary School as they performed Feliz Navidad. They are **Peter Mason, Margaret Clayton, Peter Shuttleworth, Julie Robinson, David Grech, Carol Goddard and Leah Bolton.**



Meanwhile, life in the club continues as usual. Here are our **SHOW & TELL ITEMS FOR DECEMBER.**



The bowl at left is by **Paul Ryan,**

John McMahon showed us his Yin Yang candlesticks, made from Sassafras and the jigs he used whilst making them.



John also showed us a bowl made from blackwood with a decorative rim.

The owl design, keepsake box is by **Mark Bellis,** made for his granddaughter, using Queensland maple, beech and 20mm ply. The features are little drawers.



Chris Drysdale showed us his 'T' puzzle, cut from plywood. A little like a jig-saw puzzle, the challenge is to make the four pieces fit together in varying designs.

More Show & Tell on next page.

Show & Tell continued.



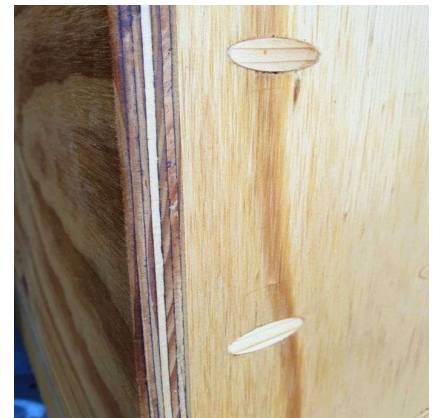
The collection of pens, at left, is by **Aaron Zong**.

Another game submitted for Show & Tell was the Corn Hole game made from 19mm ply by **Peter Ball**.

Cornhole is a lawn game popular in North America in which players or teams take turns throwing fabric bean bags at an inclined board with a hole in its far end. The goal of the game is to score points by either landing a bag on the board or putting a bag through the hole.

Here's what Peter had to say:

"Wilson Botanic Park asked us to make several lawn games for park visitors to play over Summer. They bought some last year but they were all broken, so rather than buy more, they asked the club to make some that would be robust enough to survive the Summer. Accordingly, for the four "Corn Hole" games, I used 19mm plywood and pocket hole screws plus glue for the joinery. I added them to the Show and Tell at the meeting because I had several questions about the pocket holes as I was making them, and I thought there might be more when people could see the finished product. And I was right. It turns out that quite a few members have heard of pocket holes but haven't used them. In my experience, they result in a very strong joint so they are ideal for joining plywood. I'm hoping the WBP visitors can't destroy these ones."





Though not for Show & Tell, here is **Lisa Brouwer** with one of the 20 cradles on which she and partner **Jon Marriott** have been working. Due to other commitments, it has been a concentrated effort, for Lisa & Jon, over the past 3 weeks, to get the cradles finished in time for our Gala Day. Another generous donation came from Lisa's mother, **Gwen** who made little covers for each of the cradles, some of them pictured below.



Best Wishes We are aware that some of our members are unwell at present. Others are caring for sick partners. To those members we send our kind thoughts and best wishes for a return to good health.

TUESDAY TREATS. For those members who attend the club on Tuesdays, morning tea is very often quite special. This is because **Marilyn Crowe** has been baking again. Marilyn (wife of **Brian**) enjoys trying out different recipes and generously sends the delicious results along with Brian, to the club for members to enjoy for morning tea.



Brian tells me that Marilyn is continuing a custom she shared with **Marilyn Griffin & Marilyn Chong** who also used to bake for the club members.

So, here's a bouquet for the three Marilyn's for their generosity and especially for **Marilyn Crowe** for continuing the custom. Thank you, Marilyn.



A FEW REMINDERS: Nails in recycled wood destroy saw blades. Please ask another member to help you check before you cut.

Firewood bags are to have only reasonable sized offcuts. No rubbish, please.

Machine damage. If you break it, don't leave it for somebody else to find. Tell a **GO TO** member so that the problem can receive attention quickly. Mistakes happen - You won't be shot at dawn.

Clean up your work space when you leave. Please don't leave your mess for someone else to tidy away before they can do their own work.

Resist the temptation to take wood that is being used by another member. If it's not yours, please don't take it.

Pay attention to GO TO members when they offer advice on using the machines. **GO TO** members are experienced woodworkers who have been selected to help keep the club running smoothly.

EXPO 25. **John McMahon** wants to remind us that now is a good time to start thinking about our entries for next year's Expo which is planned for July 11th, 12th and 13th.

John would like to see a wider variety of entries from more members. Remember, items are not expected to be of competition standard.

Some Web links that you may like to check out -

Victorian Men's Shed Association. <https://www.vmsa.org.au/news2/>
Council of Woodwork Clubs (for an up-to-date list of woodwork events)

<https://www.councilwoodworkclubs.org/events>

[Newsletter Archive | Men's Sheds Association | UKMSMA \(menssheds.org.uk\)](#)

NOTE: In the November issue of the UK Men's Shed Newsletter mentioned above, is an article on a type of men's cancer that is not widely discussed. It's a warning shot for all men and a useful piece of knowledge for the health-conscious man to have, though hopefully, will never need to use.

OUR SPONSORS: We value the support of the following companies.



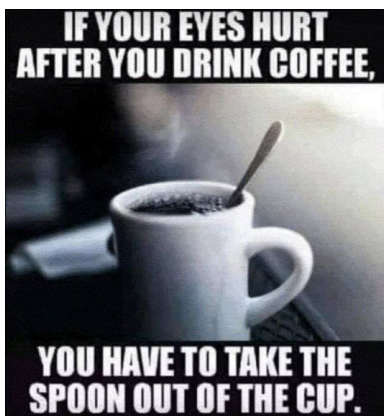
Alexander Drysdale has given me the poem at right, which he claims is the story of his life these days.

Louise Hollis thought of Berwick Woodworkers when she saw this cartoon, and sent it to us.



I was always taught to respect my elders but it keeps getting harder to find one.

I couldn't afford an Ancestry DNA kit so I announced that I had won the lottery and soon found out who my relatives are.



Instead of a sign that says, "Do not disturb" I need one that says, "Already disturbed Proceed with caution."

Apparently exercise helps you with decision making. It's true. I went for a run this morning and decided I'm never going again.

You can blame **Ross Blackwood** for the above jokes.

That's all for now, with once again my thanks to **Carol Goddard** for her help with proof reading this newsletter. Before I go, here's a quick look at the complete photo of **Brian Crowe** chairing the November General meeting from the Christmas chair that the club made for Bunnings, Clyde North. **Ron Bolton** is seen enjoying the joke. Snapped by **George Ritchie**. Thanks George.

At this point I want to wish you all a safe, happy and peace filled Christmas. My best wishes also, for the coming New Year.



MY FORGETTER.

My forgetter's getting better
But my rememberer is broke.
To you that may seem funny but,
To me, that is no joke.

For when I'm "here" I'm wondering
If I really should be "there"
And, when I try to think it through,
I haven't got a prayer.

Oft times I walk into a room,
Say "what am I here for?"
I wrack my brain, but all in vain
A zero, is my score.

At times I put something away
Where it is safe, but, Gee!
The person it is safest from
Is, generally, me!

When shopping I may see someone,
Say, "Hi" and have a chat,
Then, when the person walks away
I ask myself, "Who the heck was that?"

Yes, my forgetter's getting better
While my rememberer is broke,
And it's driving me plum crazy
And that isn't any joke.

(Author unknown)

