

Telephone (clubhouse): 8712 7755 Club email: [bdwwcsec@outlook.com](mailto:bdwwcsec@outlook.com)

Postal address:

The Berwick District Woodworkers Club Inc  
PO Box 921, Berwick, Victoria, 3806

Location:

The Old Cheese Factory, 34 Homestead Road Berwick, 3806  
Inc. No A0012122U

Welcome to the Newsletter for April 2025

**DATES TO REMEMBER** **Committee Meeting** – Wednesday May 14th 2025 - 1:00pm in clubroom. **General Meeting** - Wednesday 18<sup>th</sup> June. 1:00pm in clubroom. As always it will be preceded by a free BBQ lunch at 12 noon. Hope to see you there. **CLUB WORKING BEE** Thursdy July 3<sup>rd</sup> **CLUB EXPO.** July 11<sup>th</sup> 5.00pm – 8.00pm, July 12<sup>th</sup> 9.00am – 5.00pm, July 13<sup>th</sup> 9.00am – 5.00pm.

#### PRESIDENT'S MESSAGE.



Good afternoon all,  
I hope this report finds you all well and of those that are a bit off colour I hope you are on the road to recovery and coping ok.  
I must thank the members who gave up their Saturday to travel to Essendon to collect an incredible amount of donated timber. It was an unselfish gesture for the good of our club. Well done to you all. The timber will be assessed and made available to all members for a small fee and will be on display during Expo.  
I have noticed that some members when requiring assistance ask whoever is nearby; this is not a good practice as sometimes the wrong information can lead to errors being made and can be quite dangerous. There are 10 Go-To members appointed because of their knowledge of the machinery, so please use them whenever possible.

I thought that it is worthwhile mentioning that the club has a Code of Conduct document, and I would like all members to be familiar with it - there will be some displayed around our clubrooms. If we all follow the guidelines in this document, we will continue to have a happy and harmonious atmosphere in our clubrooms. Having 165 members also means that we have 165 personalities, add to that different religions and cultures as well, tolerance and understanding is essential to maintain our happy club atmosphere.

We will see some changes around our clubrooms this year: the function room is to be upgraded; the Farmers Market area will have gates fitted and some picnic tables installed. There will be a large shed built beside the OCF maintenance shed, which will result in the roadway between our workshop and the maintenance shed being

upgraded and a car park constructed behind our workshop.

Expo is now just around the corner, so let's get behind John and his team to ensure another successful year.

That's all from me, **Brian**.



Ian Deans



Carol Goddard



Leah Bolton



Brian Crowe



Ross Blackwood



Don Buchanan



Bill Bradshaw



Ron Bolton



John McMahon



Simon King

Posters of the club's Go-To members, shown left, are displayed throughout the workshop for your reference.

# CLUB INFORMATION

## MEETINGS:

### COMMITTEE

Wednesday 14<sup>th</sup> May - 1:00pm

### GENERAL

Wednesday 18<sup>th</sup> June - 1:00pm

## MARKETS – Volunteers needed

Saturday 10<sup>th</sup> May Farmers Market

### Newsletter Contributions

All material for the Club's monthly publication is to be submitted by e-mail to [ricels@bigpond.com](mailto:ricels@bigpond.com), by hand, or by phone to Elsie Hoare the editor by the 15<sup>th</sup> of each month. Letters to the editor must be sent to the committee.

## Committee of Management:

Position	Name	Phone
President	Brian Crowe	0438 012 155
Vice President	Ron Bolton	0413 152 391
Secretary	Don Buchanan	0431 313 998 email: <a href="mailto:bdwwcsec@outlook.com">bdwwcsec@outlook.com</a>
Treasurer	Peter Ball	0425 725 875

Committee	Phone
John McMahon	9796 1097
Ken Whitefield	0402 256 134
Michael Berry	0466 812 717
Ian Deans	0403 419 774
Simon King	0477 831 318
Peter Shuttleworth	0402 680 605
Julie Robinson	0481 088 390
Carol Goddard	0422 395 565

## Contacts

Equipment authorisation approved members - *Brian Crowe, Don Buchanan, Simon King and Ron Bolton.*

Health and Safety Coordinator – *Peter Shuttleworth*

Machinery Maintenance Coordinators. - *Ron Bolton & Simon King*

Timber Coordinator - *Martin Van Diemen*

Screws - *Martin Van Diemen*

Paint - *George Young*

Toy Coordinators - *Simon King & Julie Robinson*

Functions Coordinator - *Don Buchanan*

Gala Day Coordinator - *Brian Crowe*

Annual Expo - *John McMahon*

Farmers Market Coordinators - *Martin Van Diemen & Don Buchanan*

Public Relations - *Don Buchanan*

OCF Contacts - *Brian Crowe & Don Buchanan*

Webmaster - *Ron Bolton*

Newsletter Editor - *Elsie Hoare*

Members' Welfare Coordinator - *Ken Whitefield*

Men's Shed Coordinator - *Wayne Lucas*

### Membership Fees:

	Joining	Annual
Individual	\$40.00	\$75.00
Family of 2	\$60.00	\$115.00
Family of 3	\$60.00	\$138.00
Family of more than 3 please enquire.		
No Attendance Fee.		
Tea & Coffee complimentary.		

### Paying your Membership Fees

Members can pay either direct at club or by EFT bank transfer to WBC Berwick BSB 033 609, Acct # 41 6074. Please remember to put your surname as a reference.

### Safety First

For safety reasons, there must always be **three** members present whenever the workshop is being used.

## Clubrooms and Workshops Open Hours

Weekly	Hours	Leader
Monday	9:00 am – 1:00 pm	Ron Bolton
Tuesday	9:00 am – 1:00 pm	Michael Berry
Wednesday	9:00 am – 4:00 pm	Don Buchanan
Wednesday Evening	4:00 pm – 7:00 pm	Bill Bradshaw
Thursday	9:00 am – 1:00 pm	Brian Crowe
Friday	9:00 am – 1:00 pm	Ron Bolton
Saturday	9:00 am – 1:00 pm	Ron Bolton
Sunday Farmers Market	10:00 am – 1:00 pm	TBA

Berwick Woodworkers wish to thank **Gary Maas MP** State Member for Narre Warren South, and his staff for their ongoing support in printing this newsletter for us.



## Membership Renewal

Reminding all members that the current membership year ends on 30<sup>th</sup> June 2025 and subscriptions for the new membership year commencing on 1<sup>st</sup> July 2025 are:

Individual	\$75.00
Family of two	\$115.00
Family of three	\$138.00

*(Note, Life Members are exempt from paying the annual subscription)*

Any members who joined during the current membership year will be able to apply a pro-rata credit in their membership. To check the credit, please refer to the **Welcome** email you would have received at the time of joining, or contact the treasurer, Peter Ball.

If you are intending to renew your membership, please pay before the end of June. Our insurance premium will be due in July and we rely on the timely payment of subscriptions to cover this significant cost.

If you are not in a position to renew for the coming year, please let me know so I can adjust the register and not bother you with follow-up questions. Remember, you can always re-join later if you decide to return.

Thank you for your attention.

Peter Ball, Treasurer, BDWWC Inc.



### CLUB ACTIVITIES

Club members were kept busy when they took part in the Easter display event at local Bunnings Warehouses in Fountain Gate and Clyde North. The toy animal cut-outs were as popular as ever and their creation attracted many interested views.

**Brian Crowe** snapped these photos at the Clyde



North Store. A little customer selects a toy while **Rudolfo**

**Rabinovich, Wayne Dineen and John Damon** are seen keeping up the supply of little cut-out animals.

It wasn't all work for the club members here are **Wayne Dineen** and **Peter Mason** taking time out to enjoy some complimentary jam donuts.

We are looking for more members to volunteer for the Bunnings Mother's Day events on Thursday 8<sup>th</sup> May at both Bunnings stores.



**Wayne Dineen** has spent some time at the scroll-saw, preparing these gift tags to be given away at the Mother's Day stalls at Bunnings.



**MARGARET'S FAREWELL MORNING TEA** I think we can all agree that life around the clubroom will be a little quieter in the next few months without **Margaret Clayton's** energy. Together with her husband **Bill**, Margaret is taking leave to take an extended trip around Australia. No doubt we'll receive bulletins from Margaret from time to time, meanwhile we wish her and Bill happy, safe travelling.

At Margaret's farewell morning tea with the club some members decided to make it a fancy dress event. Margaret, who hails from bonnie Scotland, showed off her apron, made to look like a kilt, topping it with a tam-o-shanter and fake red hair. **Simon King** tried the tammie for size and **Ron Bolton** wore a crocodile onesie.



#### **PYROGRAPHY LESSONS.**

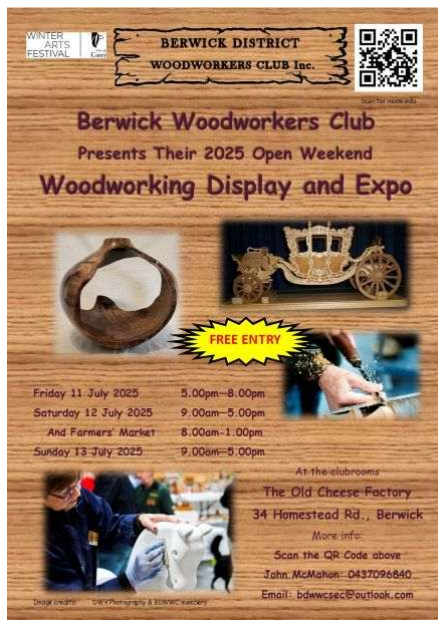
For those who are interested in the craft, **Beverly Witts** has offered to run a pyrography course. That's Bev at left as she took part in our 2023 Expo. **Ron Bolton** recently snapped the photo at right, of Bev as she gave some tips to **Brian Roberts** and **Christine King**.



**SAFETY MATTERS.** A new assembly point has been established in the area in front of the clubroom. In the case of an emergency, members are to leave the buildings by the nearest exit and gather at the assembly point. A fire drill will be conducted soon to determine whether the evacuation plan works or needs to be changed.

#### **A PLEA FROM THE FINISHING ROOM by Peter Angwin and George Young.**

"A problem in the finishing room is the mounting collection of used paint stirring sticks which is outnumbering clean sticks. To **ANYONE** who uses a stick to stir paint, would you **PLEASE** wipe excess paint from the stick **BEFORE** you return it to the box. Thank you, **Peter A. and George Y.**



## A NOTE FROM JOHN MCMAHON.

Our Expo 2025 is fast approaching now, and we are approaching the time when lots of tasks will need to be done in the lead-up to this event. The raffle tickets have been printed and are now available for selling at the Farmers Markets. The tickets and photos of the prizes are in the office. Thanks to Don Buchanan, Ron & Leah Bolton, Simon King, Keith Towe, and Len Preece for their work in making the prizes.

We have received 5,000 advertising flyers for distribution, and this will start to occur with distribution to the club's suppliers towards the end of May, other local outlets early in June, and letterbox drops later in June. Lots of help from all members will be needed for this task, so speak to John McMahon, Don Buchanan, or Peter Ball if you can help.

A reminder to all that a clean-up working bee and bbq will occur on Thursday 3<sup>rd</sup> July, and the workshop will be closed for all members'

work and parts of the clubrooms will become restricted from Friday 4<sup>th</sup> July to Monday 14<sup>th</sup> July in order to register all the entries, prepare both areas for the Expo, and clean up afterwards. We will need lots of help from members at this stage.



A number of demonstrations are planned again this year, covering woodturning, rocking horse making, scroll saw, bandsaw, pyrography & Dremel. Rosters will be displayed in the clubrooms from mid-May for members to volunteer as demonstrators. If any member would like to demonstrate other woodworking disciplines, such as carving, marquetry, intarsia, etc., please let John McMahon know and these can be included.

Expo entry forms will become available in mid-May. As in previous years, exhibition pieces must not have been exhibited in any of our previous Expo's, and can be either offered for sale, or listed as "not for sale." A maximum of 50 pieces per exhibitor is allowed. Any pieces a member wishes to sell, but are ineligible to be displayed in the exhibition, can be entered into our Sales section on a separate entry form. A maximum of 80 pieces per member is allowed in this section. Entries will close on Friday 4<sup>th</sup> July and delivery of pieces

will occur from then until 7<sup>th</sup> July, 9am – noon daily.

As the countdown clock on the Events page of our website indicates, there is now only about 80 days until the Expo, and this time will pass quickly, so all members are encouraged to get busy working on your entries. Remember that we want to see the work that our members do, no matter how experienced they are, or how refined the pieces might be. Participation is the key ingredient.

Cheers, **John.**

**NEW MEMBERS:** This month we welcome **Ian** and **Donna Innes-Wardell** and hope they will soon settle in and enjoy their time with us.

**Best Wishes** To those of our members who are out of action at present, due to illness or the care of ill partners. We send our best wishes and hope that you will be able to join us again soon.



Our deepest sympathy has been with **Colin Ellard** following the loss of his wife Beverly, late in March. Bev had been ill for several months. Our thoughts are with Colin and his family as they cope with this difficult time.



#### FARMERS MARKET WITH A DIFFERENCE.

Farmers Market patrons were treated to an extra pleasure at the April market when the Old Cheese Factory hosted a vintage Car display. A trip down Memory Lane for some of us. **John Damon** took these photos .



#### SHOW & TELL FOR APRIL.

The bowl with the hand carved gum leaf trim is by **John McMahon**. The wood is hakea. The red gum bowl is also by John.

**Mark Bellis** took a piece of birch ply and worked this blackberry mouse on it with pyrography.



**Chris Drysdale** created this miniature nest with 3 eggs for a wood-turning expo, some years ago. The wood is from a small ebony burl.

**Aaron Zong** turned some yo-yos and wheels from a variety of timbers. The yo-yos work with ball bearings.



Some Web links that you may like to check out -

[Newsletter Archive](#) | [Men's Sheds Association](#) | [UKMSMA \(menssheds.org.uk\)](#)

Victorian Men's Shed Association. <https://www.vmsa.org.au/news2/>

[Council of Woodwork Clubs](#) (for an up-to-date list of woodwork events)

<https://www.councilwoodworkclubs.org/events>

## NOT FOR SHOW & TELL.



There has been a lot interest in these little chariots, made following a request from a member of the public, by **Brian Crowe** and **Simon King**. The chariots are for children to pull in a Hindu religious ceremony.

**Catherine Fiddelaers** has made this tool box for tool storage at the Cheese Factory community garden.



Taking advantage of Seniors Travel Concessions, **Peter** and **Lynne Angwin** left

their car at home and took off for a few days away. Here is how Peter described their trip.



*"Lynne and I have just returned from a lovely break to Sydney and surrounds. We travelled by XPT train (0830) from Melbourne, using Concession fares, First Class! The only benefit there was that our seats lent back 40 degrees? Leg room was ok! A buffet section made available good cost food and drink but there was no dining area.*

*It was an 11hrs journey with exercise during the trip and a good book helps. Travelling by day gives one a great scope of the countryside during the journey. Return was similar.*

*We walked some 43kms, over 8*

*days, using Opal cards, travelling on Light Rail, trains, buses and ferries. Cost on our cards was less than \$20 in total.*

*Areas we covered were Manly, Darling Harbour, Pyrmont spit bridge, train and Hopon Hopoff bus through the Blue Mountains, Mrs Macquarie's chair (carved sandstone) and of course the Opera House via the Domain Gardens."*



\*\*\*\*\*

MANY THANKS, ONCE AGAIN, FOR THE CONTINUED SUPPORT OF OUR SPONSORS.



**Just a thought.** We all know mirrors don't lie. I'm just grateful they don't laugh.

That's all for now folks. With many thanks again to **Carol Goddard** for her help with proof reading. Until next time I hope you stay safe and well.