

# Organic Artifacts of Earth (Educator's Guide)

# Unit Overview



*L1: Cranium: Skull Art*



*L2: Mother Earth*



*L3: Find Trash & Plant Art*

# Ancient Aztec Culture



*The Sun Stone*

Source: Museo Nacional de Antropología



*The Codex Borgia*

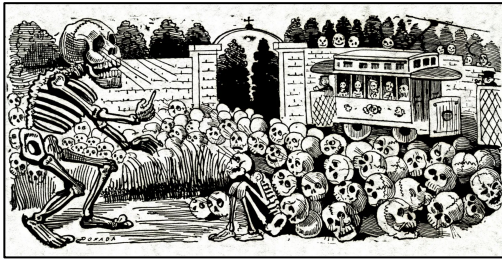
Source: Universitätsbibliothek Rostock - FAMSI.



*Mosaic Mask of Tezcatlipoca*

Source: Trustees of the British Museum

# José Guadalupe Posada



Grand Electric Skull Gran Calavera Eléctrica

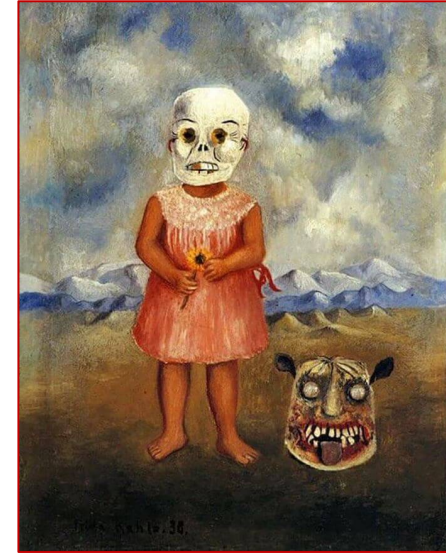
Source: Library of Congress



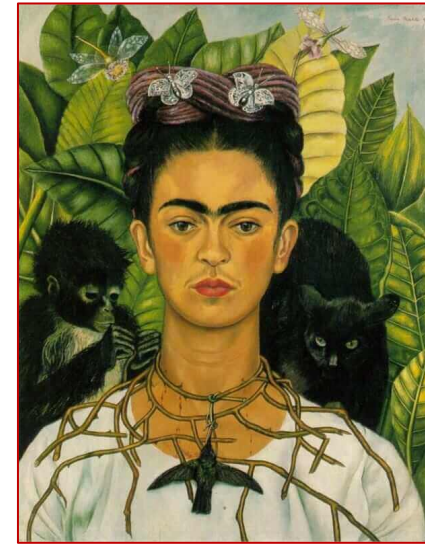
Calavera Oaxaqueña'

# Frida Kahlo

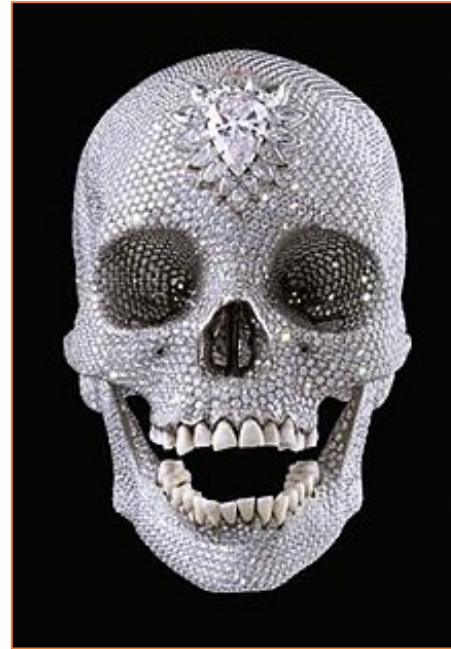
Source: FridaKahlo.org



Girl with Death Mask



Self-Portrait with Thorn Necklace and Hummingbird



# Damien Hirst

For the Love of God

Source: DamienHirst.com

Source: National Geographic

# Ellen Fields

Catrinas



Diego Rivera

Dream of a Sunday Afternoon in Alameda Park

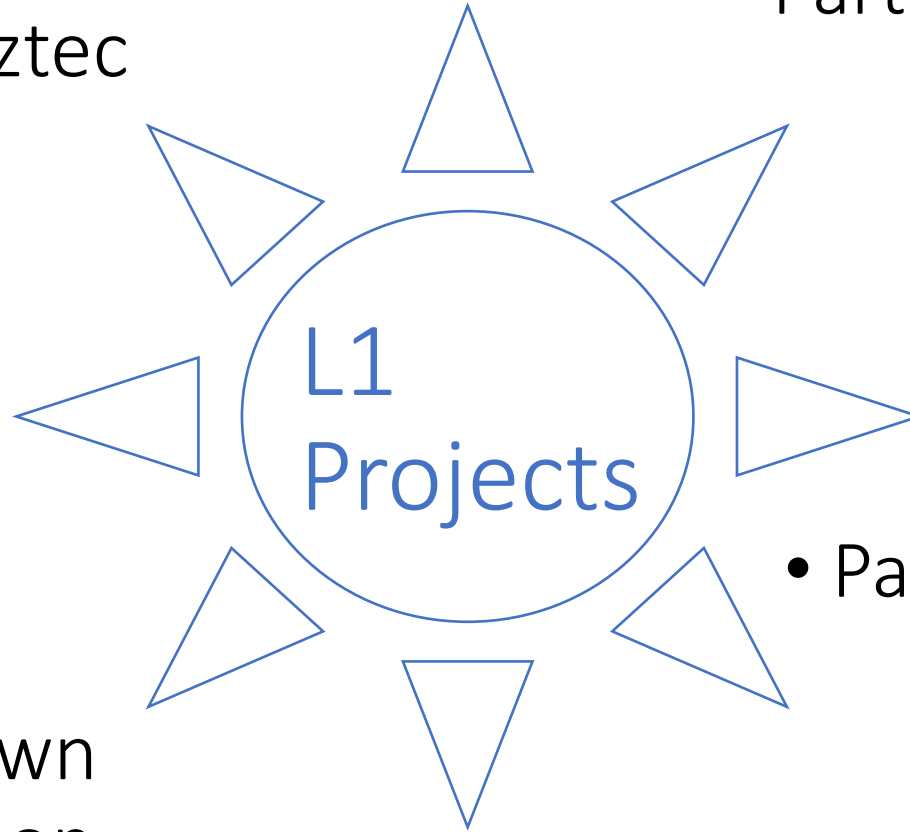
Source: Sotheby's

## Collaborative Mini Project:

Re-create an Aztec symbol using contemporary materials.

## Mini Project:

Create Your own Political Cartoon, Anime, or Illustration.



## Final Project

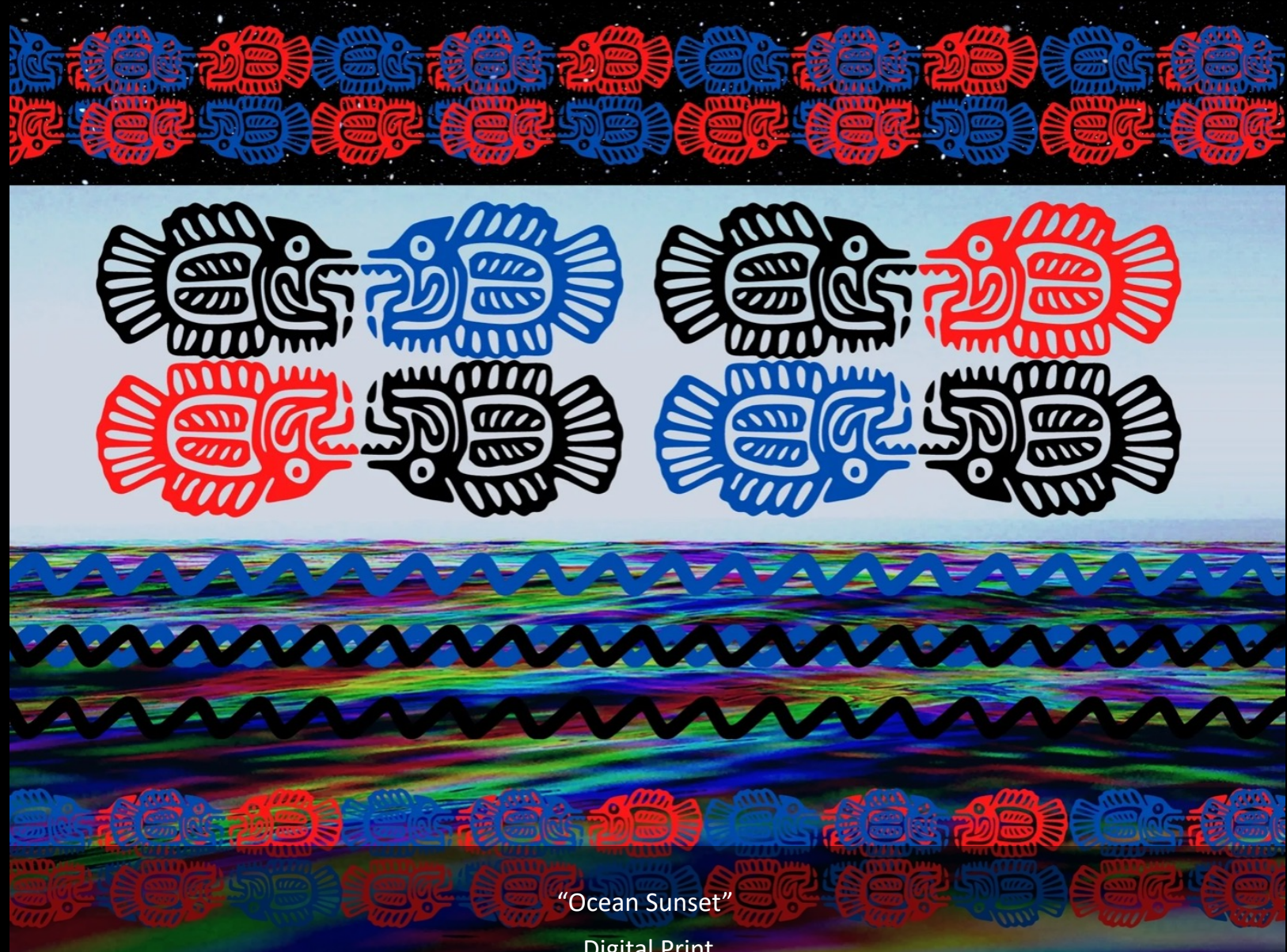
### *Cranium: Skull Art*

- Part I: Create & Reflect!
  - Using any media, medium or material: Create an original work of art using symbols, ideas and imagery from this lesson.
  - Reflect on your artmaking throughout the process and write an Artist Statement summarizing the work and how it relates to contemporary ideas, or events.
- Part II: Research & Learn.  
Choose one of the Following topics to explore:
  - Prehistory, Aztec Artifacts
  - Photographer, Ellen Fields
  - Artist, José Guadalupe Posada
  - Artist, Frida Kahlo
  - Artist, Diego Rivera
  - Artist, Damien Hirst

# L1 Teacher Exemplars



"Pumpkin Sunshine"  
Digital Print



"Ocean Sunset"  
Digital Print

# Lesson Two Artists



Georgia O'Keeffe



Kay WalkingStick



Helen Frankenthaler



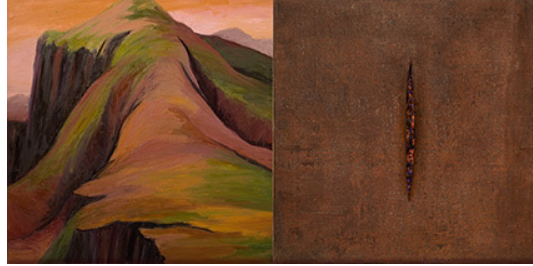
Faith Ringgold

## WalkingStick's Landscapes



Source: americanindian.si.edu

**New Mexico Desert**, 2011.  
Oil on wood panel, 40 x 80 x 2 in.



Source: americanindian.si.edu

**Venere Alpina**, 1997.  
Oil on canvas (left), steel mesh over acrylic, wax, and plastic stones (right), 32 x 64 in.

## Frankenthaler's Landscapes



Source: Gagosian.com, Photo: Rob McKeever

**Fable**, 1961 Oil and charcoal on unsized, unprimed canvas 94 1/2 x 99 in.



Source: Gagosian.com, Photo: Rob McKeever

**Untitled**, 1958 Oil and charcoal on primed canvas, 78 5/8 x 83 1/4 in.

## Ringgold's Landscapes



Source: faithringgold.com

**Coming to Jones Road #5: A Long and Lonely Night**, 2000  
Acrylic on canvas with fabric border, 76 x 52 1/2 in.



Source: faithringgold.com

**Coming to Jones Road #4: Under A Blood Red Sky**, 2000  
Acrylic on canvas with fabric borders, 78 1/2 x 52 1/2 in.

## O'Keeffe's Landscapes



Source: The Burnett Foundation

**Black Mesa Landscape, New Mexico / Out Back of Marie's II** 1930,



Source: Brauer Museum of Art, Valparaiso University

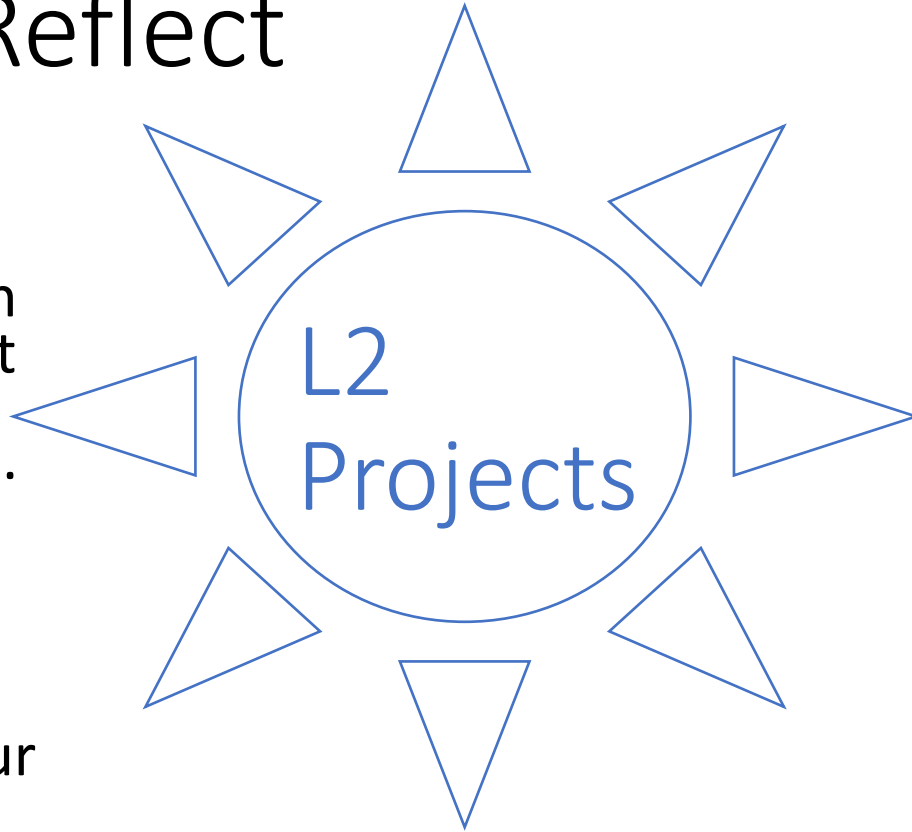
**Rust Red Hills** 1930, oil on canvas, 40.6 x 76.2 cm



# Final Project: *Mother Earth*

## • Create & Reflect

1. Using any media, medium or material: Create an original work of art capturing the landscape of Earth.
2. Reflect on your artmaking throughout the process, by photographing your work and write a short Artist Statement summarizing the work.



**Extensive Investigation:**  
Using Drawing, Writing or Poetry investigate the life and perspective, behind the brushstrokes of one or more of the included Artists.

**Mini Project:**  
Plein-Air Gestural Sketches

# Lesson Three Artists



Andy Goldsworthy



Maya Lin



Nancy Holt



Beverly Buchanan

# Earth & Land Art

## Holt's Work



Source: holtsmithsonfoundation.org

### Along the Niagara River, 1974

Artpark, Lewiston, NY, USA

Concrete, earth, water, (28 x 62 ft)



Source: holtsmithsonfoundation.org

### Dark Star Park, 1979-84

Rosslyn, Arlington County, Virginia

Gunitied concrete, stone masonry, asphalt, steel, water, earth, gravel, grass, plants, willow oak

Overall area: Two-thirds of an acre

## Storm King Wavefield



Source: Storm King Art Center

### Maya Lin, 2007-08

Earth and Grass, 240,000 Sq. Ft (11 Acre Site)

## Buchanan's Work



Source: brooklynmuseum.org

### Untitled (Slab Works 1), 1978-80.

Black and white photograph of cast concrete sculptures with acrylic paint, 8 1/2 x 11 in.



Source: brooklynmuseum.org

### Wall Fragments, 1978.

Three-part cast concrete sculpture with acrylic paint

## Goldsworthy's work



Source: Artnet.com

### Springtime, 2012

Chromogenic print, 15.7 x 15.7 in.



Source: Artnet.com

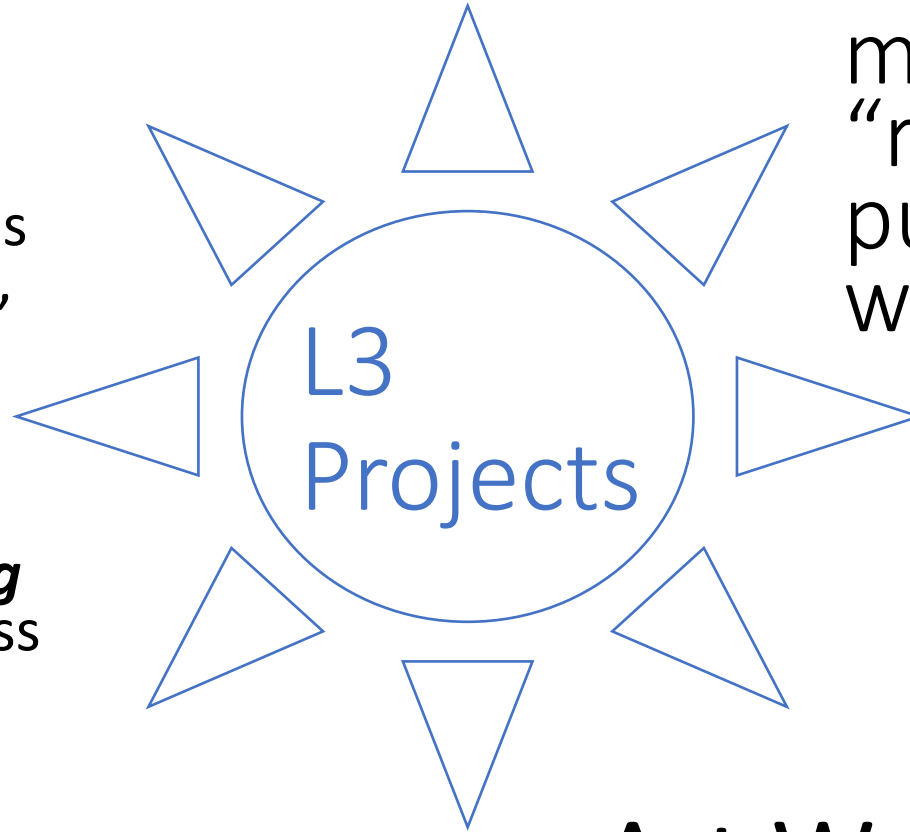
### Untitled (Stacked Snow Cone), 1989

C-print, 39.4 x 29.5 in.

# Final Project: Find Trash & Plant Art

- Create, Photograph & Reflect

1. Create a work of art using found naturalistic materials such as twigs, sticks, leaves, pinecones, acorns, flowers, moss, grass etc.
2. Photograph your work, **before, during** and **after** the process of artmaking.
3. Write a short Artist Statement summarizing the work, and your process.



**Creative Investigation:**  
Using Cardboard and other recycled materials create a “recycled landscape”, puzzle, or map of world.

**Art Walk:**  
Tune-in to Nature.