



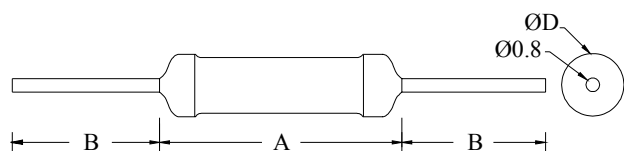
FEATURES

- * WATTAGES FROM 0.5 WATT TO 15 WATTS
- * RANGE FROM 0.01Ω TO 120KΩ
- * SILICONE/FLAME RETARDANT COATED
- * NON INDUCTIVE ARYTON- PERRY WINDING TYPE AVAILABLE
- * ANY SPECIAL DESIGN ON REQUEST
- * HIGH VOLTAGE PULSE RESISTORS AVAILABLE
- * ALL WELDED CONSTRUCTION

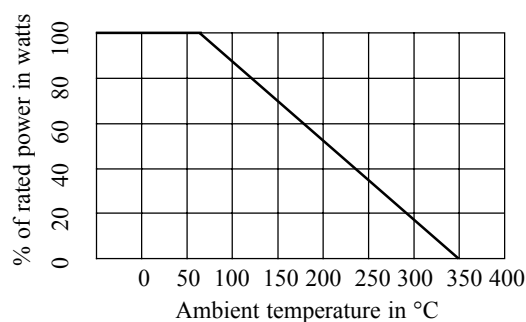
CHARACTERISTICS

Tolerance	±5% ± 10%. Low tolerances on request
Temperature coefficient	±200 PPM/°C. Low TCR available
Power dissipation	Rated at 70°C ambient and derate linearly to zero power at 350°C
Load life stability	±5% (after full load dissipation for 1000 hrs)
Maximum voltage	\sqrt{PR} Where P is power in watts and R is resistance in Ω

DIMENSIONS(mm)



DERATING CURVE



TECHNICAL SPECIFICATIONS

Wattage	VEPL Series	Resistance range		Dimensions in mm			
		Min	Max	A ± 2.0	D ±1.0	B±2.0	d±0.1
0.5W	VPA0.5	0R1	10R	7.0	4.0	27.0	0.5
1W	VPA1	0R01	3K3	12.0	4.0	35.0	0.8
	VPA1A	0R1	10R	10.0	3.5	27.0	0.6
2W	VPA1B	0R1	100R	10.0	4.0	27.0	0.6
	VPA2	0R01	4K7	14.0	5.0	33.0	0.8
2.5W	VPA2.5	0R01	10K	14.0	5.5	33.0	0.8
	VPA3	0R01	10K	18.0	6.0	30.0	0.8
3W	VPA3A	0R01	10K	16.0	5.0	32.0	0.8
4W	VPA4	0R01	10K	18.0	6.5	29.0	0.8
	VPA5	0R01	18K	22.0	7.0	29.0	0.8
5W	VPA5A	0R01	15K	22.0	6.0	29.0	0.8
	VPA6	0R01	20K	23.0	8.0	29.0	0.8
6W	VPA6A	0R01	20K	26.0	8.0	35.0	0.8
	VPA7	0R01	39K	37.0	7.0	35.0	0.8
7W	VPA7A	0R01	25K	27.0	8.0	35.0	0.8
	VPA9	0R01	68K	39.0	8.0	35.0	0.8
9W	VPA10	0R01	68K	39.0	8.0	35.0	0.8
	VPA10A	0R01	75K	43.0	8.0	35.0	0.8
10W	VPA12	0R01	100K	54.0	8.0	35.0	0.8
12W	VPA15	0R01	100K	68.0	8.0	35.0	0.8