

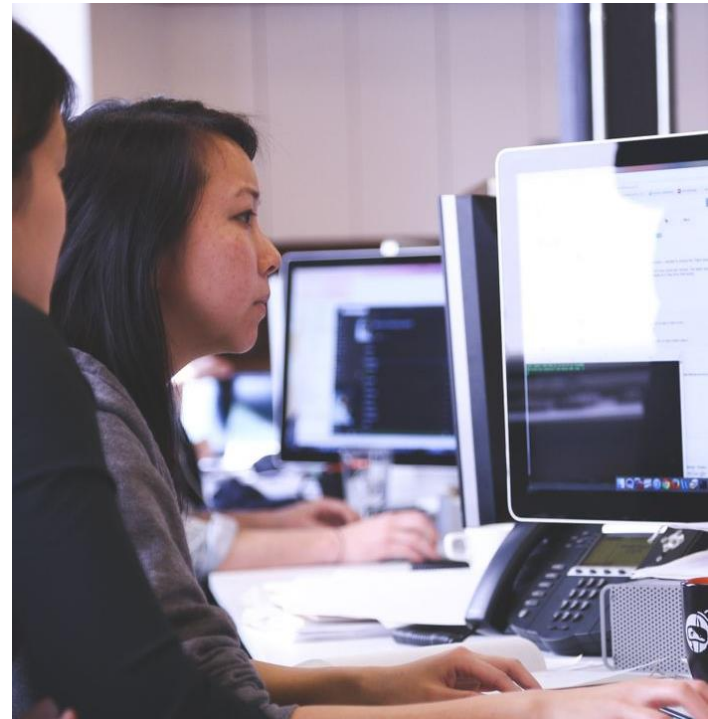


(b)right governance

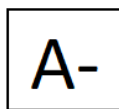
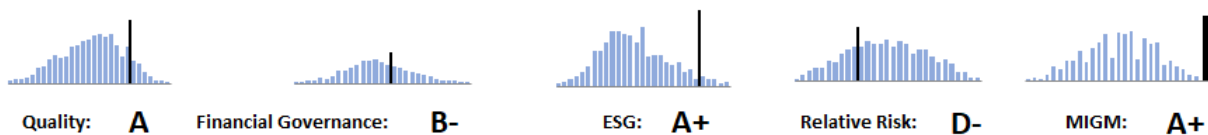
TRUST RATINGS

Trust Ratings are produced monthly on more than 1,500 publicly traded companies in the United States. Trust Ratings are based on an in-depth assessment of factors like financial governance, quality of earnings, environmental, social, and governance (ESG) factors, relative risk, and our proprietary Market-Implied Governance Metric™, which uses market-based assessments of a company to supplement these other analytics.

We gather tens of thousands of data points on close to 2,000 companies. These data points include third party analysis of ESG factors, financial data filed with the SEC, market data, and our own proprietary metrics. In combination, these metrics provide us with a story about the consistency of performance and governance of companies in comparison to others in their industry, market cap range, and across all companies.



The grading system is a rank-ordering of companies across our many measures. Behind the grade in each category are dozens of data points assessing factors like credit worthiness, accounting integrity, potential complacency, risk, and several measures related to environmental, social, and governance performance. Letter grades from A+ to F- are assigned based on these rank-orderings in the categories of Financial Governance, Environmental, Social, and Corporate Governance (ESG), Quality of Earnings, Market-Implied Governance, and Relative Risk.



A final rank ordering is done based on the interplay between these five categories to arrive at our Trust Rating and grade for each company, which likewise ranges between A+ and F-.

Approximately five percent of companies earn A+ Trust Ratings and are recognized as the [Most Trustworthy Public Companies in the U.S.](#) on the (b)right governance consulting and analytics website.

Contact us with questions at info@brightgovernance.com or by phone at +1-612-286-1776.