

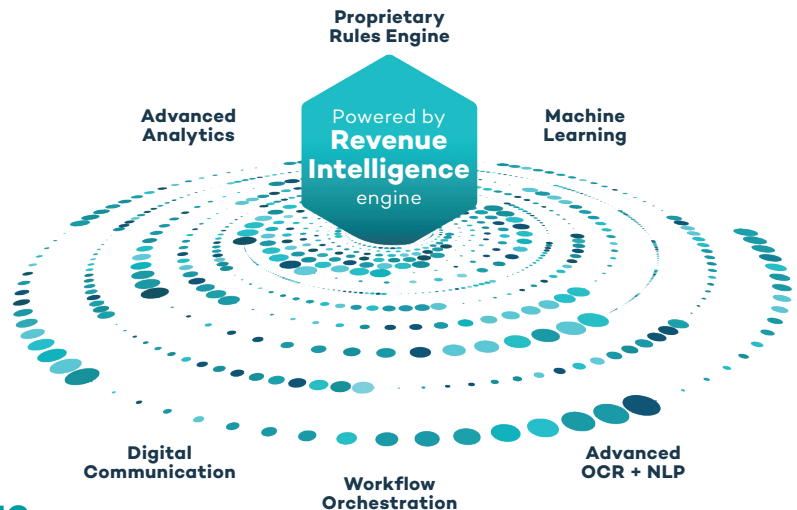


Cloudmed Automation Suite Powers the Future-Ready Revenue Cycle

No matter where you are on the adoption curve, the Best in KLAS Cloudmed Automation Suite delivers what you need to scale revenue cycle operations and thrive in any economic climate. Our automation journey is based on evidence, experience and foresight – bringing clients the advantage of scale, proven expertise, and tested solutions.

Our intelligent platform

The CloudmedAI™ Platform is the Revenue Intelligence™ engine that powers our smart automations. Our automation ecosystem combines multifaceted automation technologies – like AI, RPA, machine learning, proprietary rules – to modernize processes, remove friction, and upskill your staff.



The managed service advantage

Delivered as a full-service offering, Cloudmed supports not just the initial development and implementation of an automation, but all the underlying infrastructure and ongoing maintenance to keep automations working. Our automations are designed by revenue cycle and technology experts to master highly complex processes and workflows freeing your team to drive revenue and improve the patient experience.

Purpose-built for today and beyond

Cloudmed offers ready to configure automations that address the most significant pain points for healthcare providers across the revenue cycle, as well as a comprehensive library of automation building blocks that serve as the foundation for developing custom solutions to automate each provider's unique workflows.

Proven technology + deep expertise that works for leading health systems

775+

FTE equivalent
automations

200+

dedicated
automation staff

85+

hospital
clients

20+

years automation
experience

10+

EHR
vendors

Configuration-ready automations drive accelerated value

Cloudmed offers ready to configure automations, built to easily implement within the revenue cycle, quickly yield results, and minimally disrupt workflow.

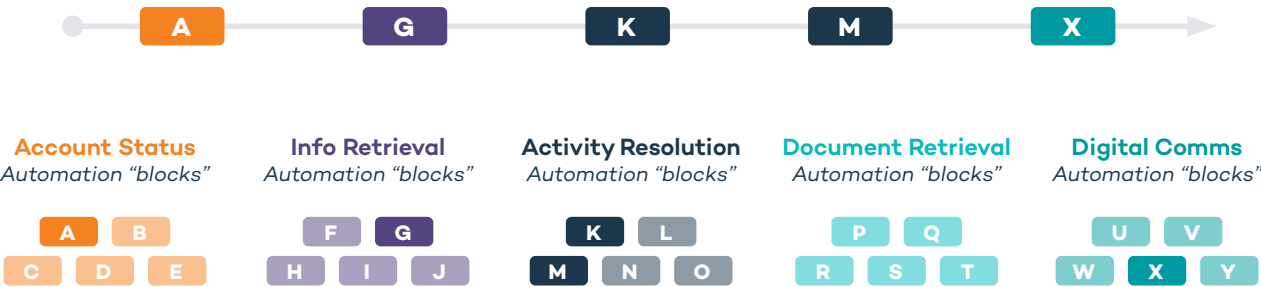
Configuration-ready automations



Proven automation building blocks accelerate your revenue cycle

In addition to configuration-ready automations, the CloudmedAI™ Platform encompasses an extensive library of pre-built automation building blocks to streamline and connect every aspect of the revenue cycle. Proven at leading health systems across the U.S., this custom delivery model allows for rapid development of scalable automations that work, and work well.

Automation building blocks allow for rapid delivery of unique, purpose-built solutions



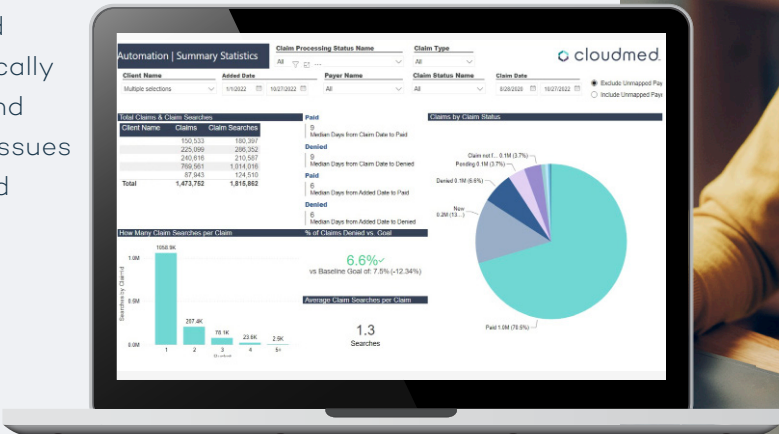
Additional category examples:

Info Extraction • Info Storage • Activity Orchestration • Packet Preparation • Document Submission • Document Storage

Continuous monitoring and support ensure stable, optimized automations

Cloudmed Automation Suite is designed with resilience and reliability built in at every step. We leverage a variety of approaches to harden the automations we develop with multiple layers of redundancy. We also include continuous real-time monitoring and management to dynamically optimize performance and ensure any automation issues are identified quickly and resolved completely.

Command Center Monitoring Report



Meet the automation experts

Cloudmed Automation Suite continues to grow in scale and capability under the leadership of our automation experts.



Lynne Hildreth, Vice President of Automation, Cloudmed

Lynne became an automation champion while leading a revenue cycle turnaround project at Moffitt Cancer Center and has developed dozens of automation use cases. Lynne leverages her consulting experience with Deloitte and extensive healthcare provider background to help hospitals identify automation opportunities and guide their development.



Matt Jarvis, Vice President of Automation, Cloudmed

Matt joined Cloudmed, after spending 14 years with Huron Consulting Group, where he worked side by side with revenue cycle leaders to transform and optimize their technology, processes, and human capital. He spent seven years working exclusively with Epic customers and has a deep understanding of how best to extend native Epic capabilities with intelligent automations.



Travis Allen, Automation Client Solution Director, Cloudmed

Travis has shaped our guiding principles, solution offerings and go to market strategy as a Director on our Automation team. Prior to joining Cloudmed, Travis spent 13 years working for MEDITECH in the EMR space and later transitioned to driving revenue cycle automations at a healthcare startup. Travis' deep RCM experience allows him to support clients in transforming divisions, drive operational improvements and guide business strategy.



Sean Barrett, Senior Vice President of Product and Digital Transformation, R1 RCM

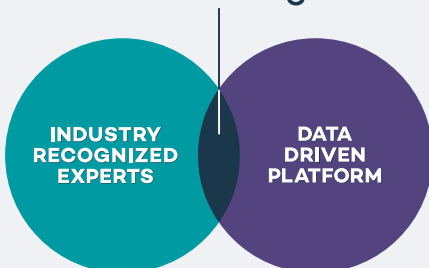
Sean oversees the R1 automation, data, and machine learning verticals. Before joining R1, he spent 14 years at Deloitte Consulting in the Technology and Strategy & Operations practices. There he focused on leading operational performance improvement and technology-driven transformation engagements at many of the largest health systems in the country.

Get started with a complimentary assessment

Cloudmed is committed to full transparency in evaluating and communicating automation opportunities and anticipated benefits. To deliver that transparency, we conduct a value assessment for each project that includes:

1. Identification of high-value automation uses in organizational workflows
2. A realistic estimate of value based on good faith recommendations
3. The methodology and standards for measuring results
4. Full transparency and clarity on costs and terms of service
5. A collaborative partnership plan articulating client expectations

Revenue Intelligence™



Cloudmed, an R1 company, helps healthcare systems maximize outcomes in a complex financial world. With industry-leading expertise and data-driven technology, we deliver actionable insights across the revenue cycle, helping providers boost productivity and increase revenue. We are proud to partner with over 3,100 healthcare providers in the United States to recover over \$2.5 billion of underpaid or unidentified revenue annually.

For an assessment performed by our expert team, contact connect@cloudmed.com

© 2023 Cloudmed. All rights reserved.

