

KOA TOWERS

Live in the ocean city, *between* green spaces.

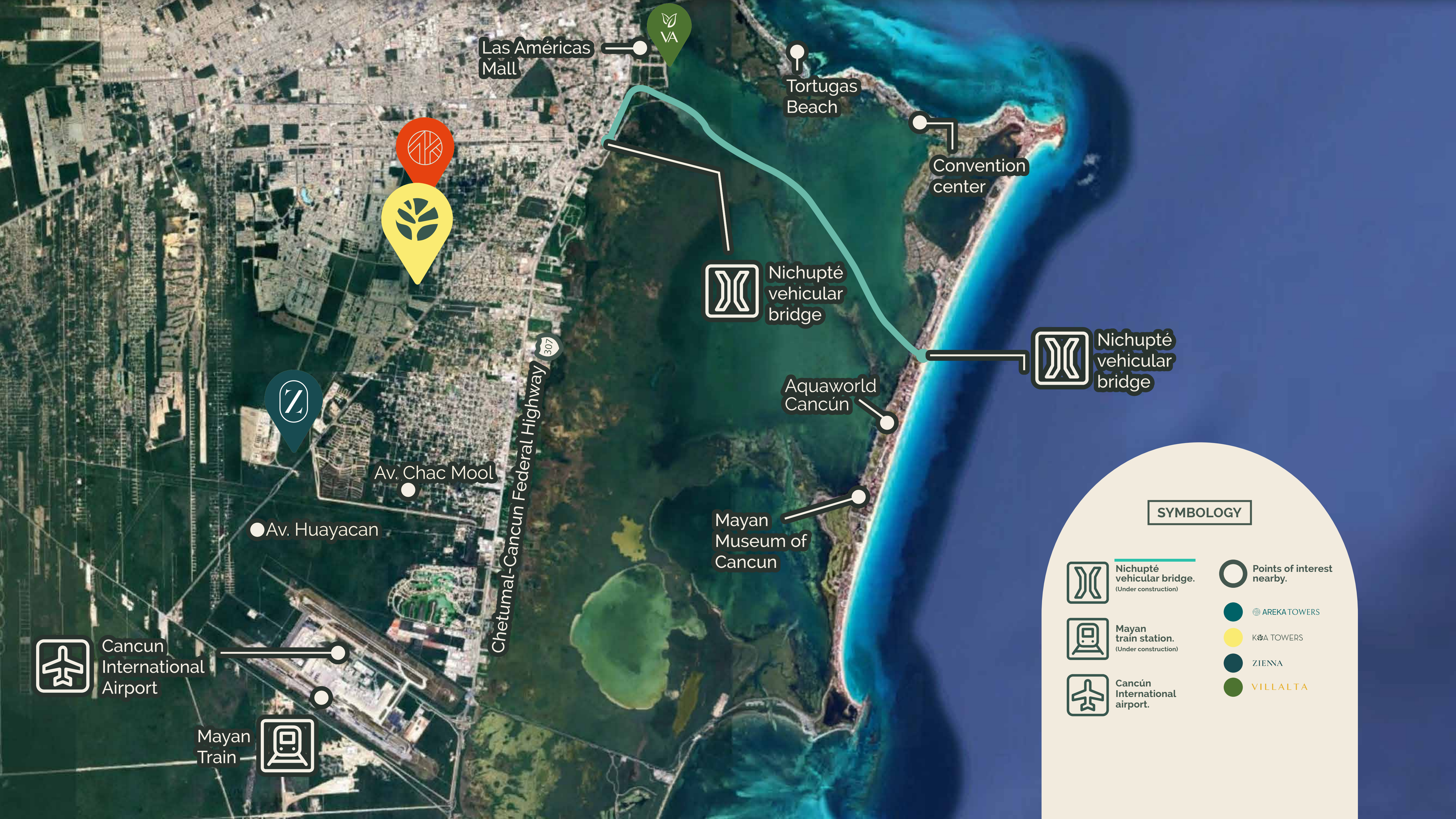




CANCÚN

The **Mexican Caribbean** is a paradisiacal and vast area due to its location on the Yucatan Peninsula. Its land, air, and very soon rail transport infrastructure make it a city with **easy connections nationally and internationally**, that is why Cancún is the **ideal place to live**.

In 2021, 22.3 million national and international air travelers from abroad were registered making Cancún the perfect place to **invest** in real estate thanks to the constant growth of capital gains in the area and **increase in surplus value**, such as the **Koa Towers** case.



Las Américas Mall

Tortugas Beach

Convention center

Nichupté vehicular bridge

Nichupté vehicular bridge

Aquaworld Cancún

Mayan Museum of Cancun

Av. Chac Mool

Av. Huayacan

Chetumal-Cancun Federal Highway 307

Cancun International Airport

Mayan Train

SYMBOLOLOGY



Nichupté vehicular bridge. (Under construction)



Mayan train station. (Under construction)



Cancún International airport.



Points of interest nearby.



AREKA TOWERS



K&A TOWERS



ZIENNA



VILLALTA





TOWER
D

TOWER
C

TOWER
E

TOWER
F



TOWER
E



TOWER
F



TOWER
D



TOWER
C



KOHA TOWERS

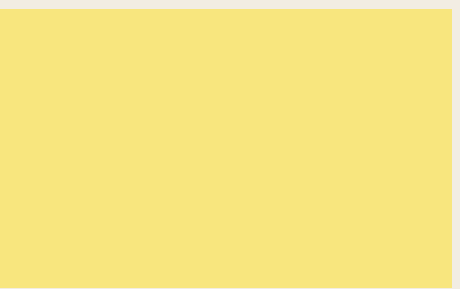
198 apartments distributed in 4 towers intertwined with the common area, generating a microclimate of **ventilation and natural lighting**.

The **main feature** of the project is the presence of vegetation that helps control temperature. The large green areas and "*vegepatios*" are semi-covered and permeable spaces with vegetation, whose purpose is to provide **autonomy and privacy** to the homes while acting as a **thermoregulator**.

The project was designed under **energy sustainability** criteria, which promote responsible architecture that is respectful of natural resources and the environment, there is **optimal use of sunlight**, achieving maximum comfort for the owner.



KOA
TOWERS



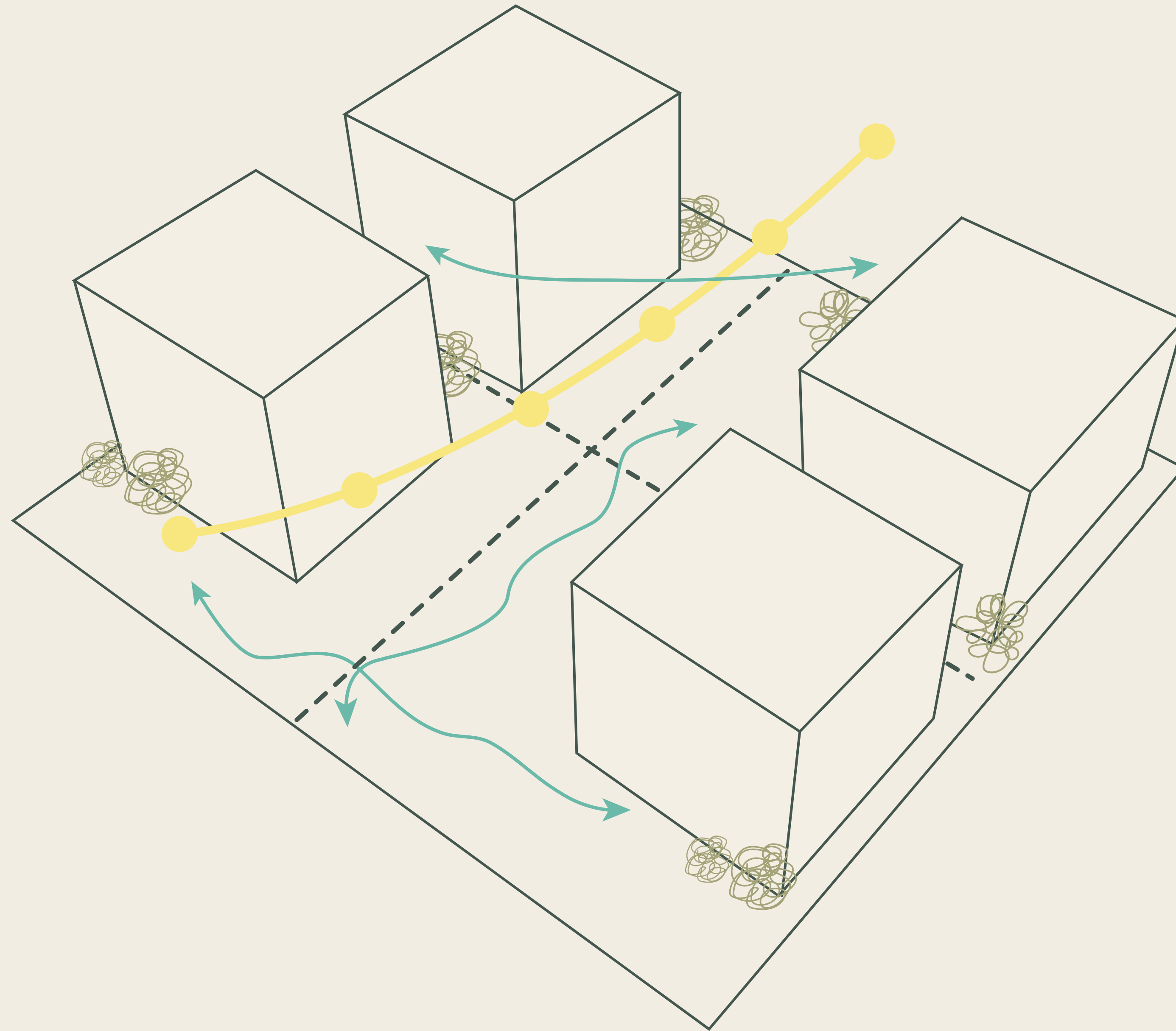
OUR

HALLMARK

►
Exploitation
of natural light.



►
Crossed ventilation
between towers and
houses.



◀
Presence of
vegetation along
of the entire project.

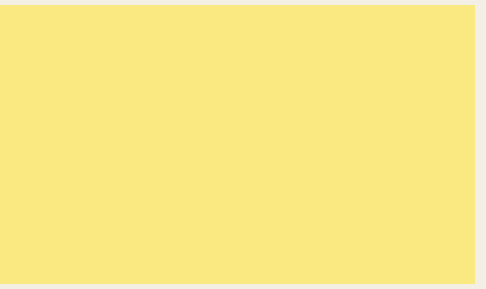


◀
Privacy between
homes through
of *vegepatios*.



Render side view





PROTO-
TYPES



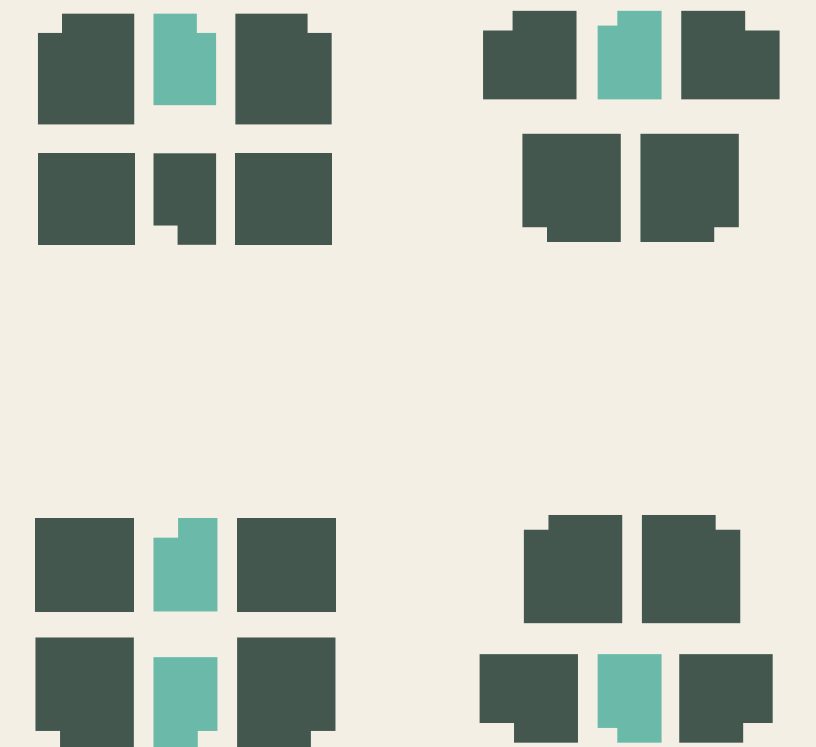
Prototype

2 BEDROOMS BIS

- 1 Level.
- 2 Bedrooms.
- 1 Bathroom.
- Terrace.
- Laundry room.
- 1 parking space.



LOCATION INSIDE
FROM THE COMPLEX:



■ *2-bedroom prototype.

*Unit renders are illustrative and informative, and may differ slightly from the final product.



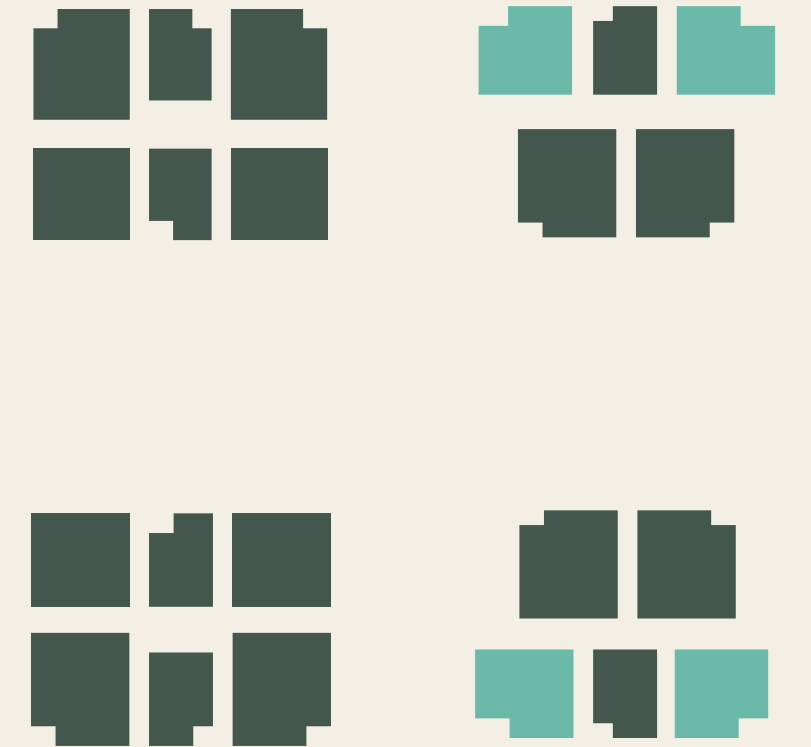
Prototype

2 BEDROOMS OUT

- 1 Level.
- 2 Bedrooms.
- 2 Bathrooms.
- Terrace.
- Laundry room.
- 2 parking spaces.



LOCATION INSIDE
FROM THE COMPLEX:



*Prototype of 2 bedrooms out.

*Unit renders are illustrative and informative, and may differ slightly from the final product.



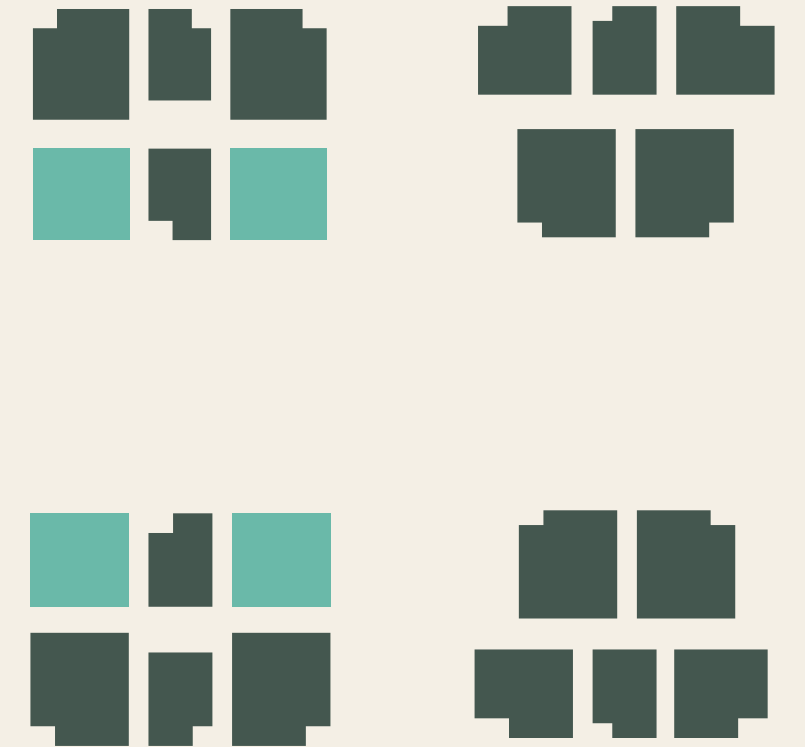
Prototype

2 BEDROOMS IN

- 1 Level.
- 2 Bedrooms.
- 2 Bathrooms.
- Terrace.
- Laundry room.
- 2 parking spaces.

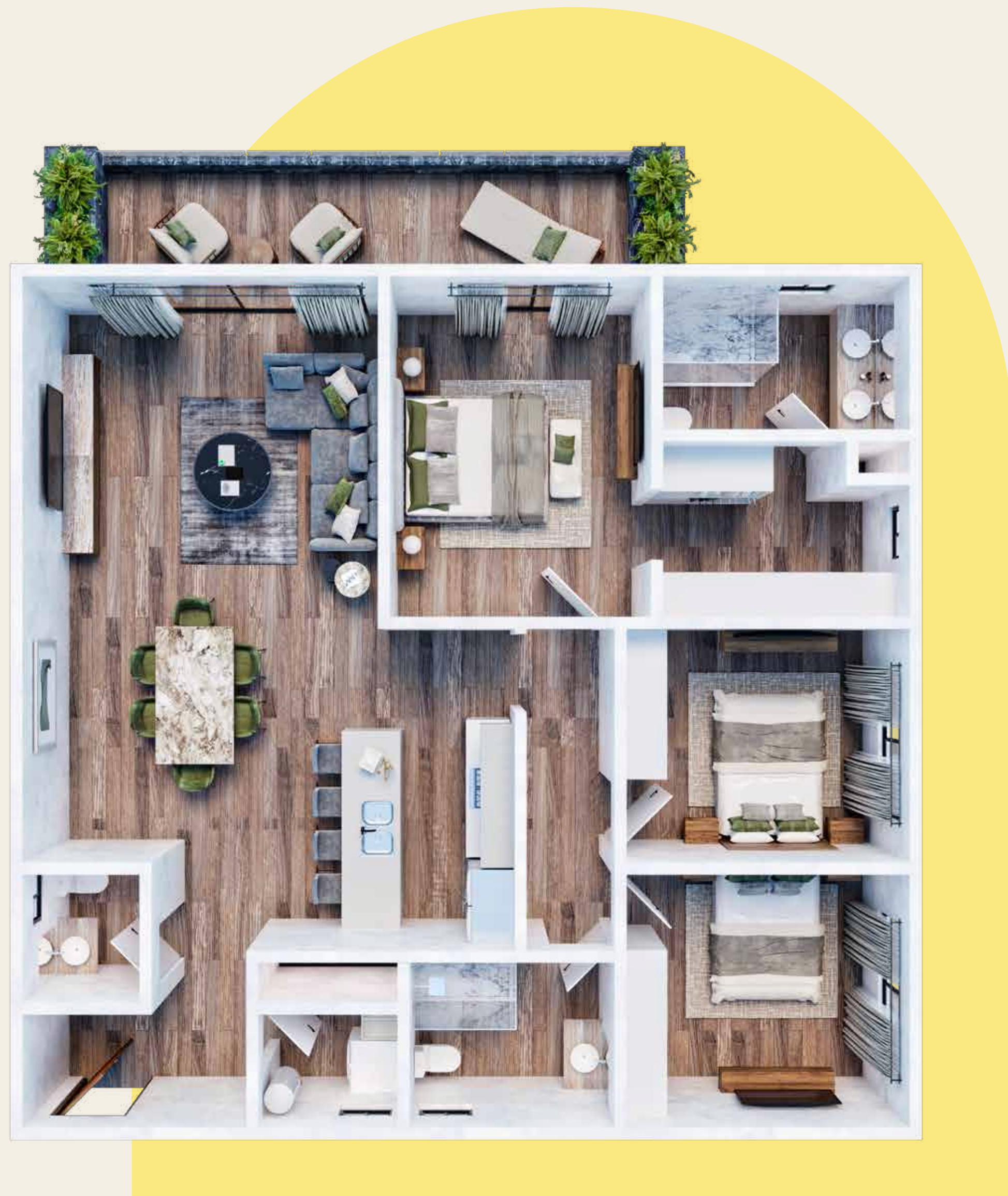


LOCATION INSIDE
FROM THE COMPLEX:



*2 bedroom IN prototype.

*Unit renders are illustrative and informative, and may differ slightly from the final product.



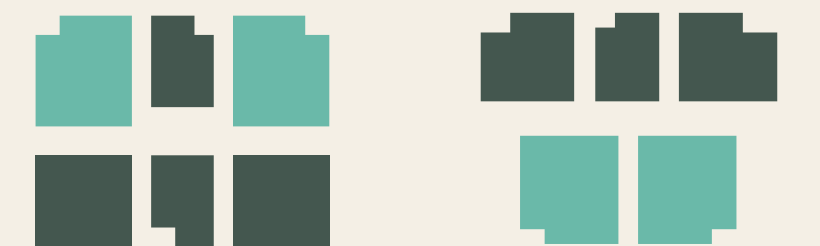
Prototype

3 BEDROOMS

- 1 Level.
- 3 Bedrooms.
- 2.5 Bathrooms.
- Terrace.
- Laundry room.
- 2 parking spaces.



LOCATION INSIDE
FROM THE COMPLEX:

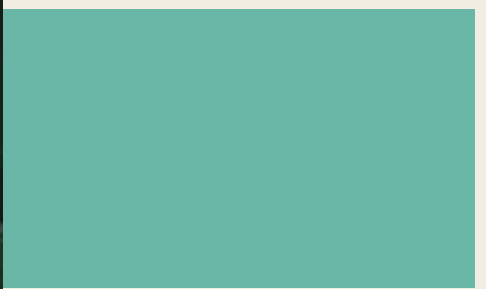


■ *3 bedroom prototype.

*Unit renders are illustrative and informative, and may differ slightly from the final product.

Interior render



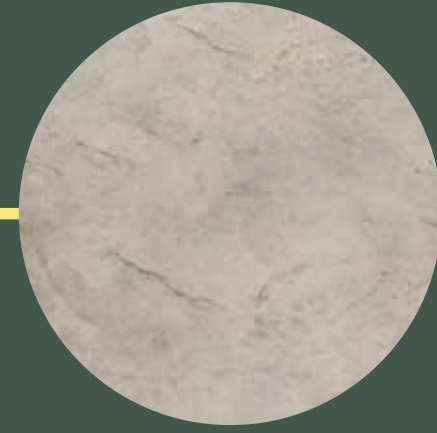


EXTERIOR

FINISH



Vegetation.



Walkers.



Pearl painting
color facade.



6 mm. glass.



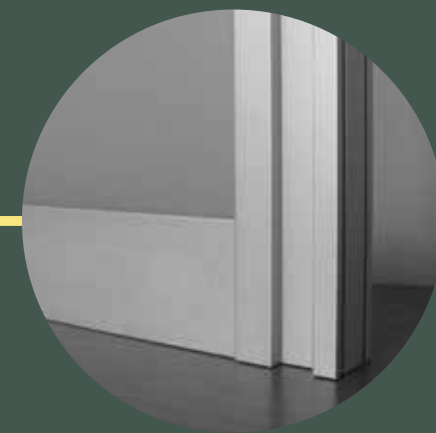
Stone coated
access.



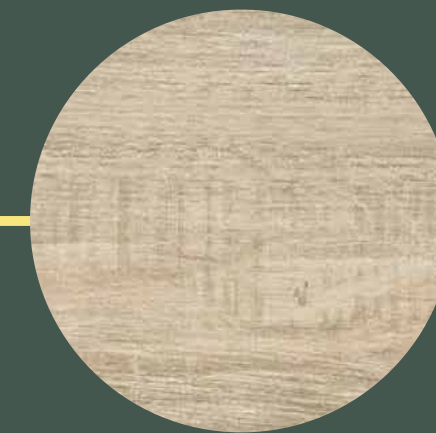
Ceramicized quartz
in pools.



Steel and aluminum
in pergolas.



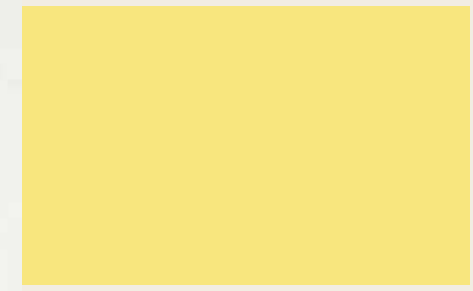
Natural aluminum
windows.



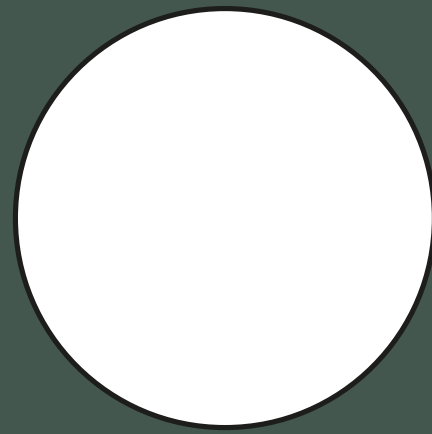
Wood type ceramic
in pool area, solarium
roof top and balcony.

Render terrace roof top





INSIDE
FINISH



White painting.



White quartz on kitchen countertops.



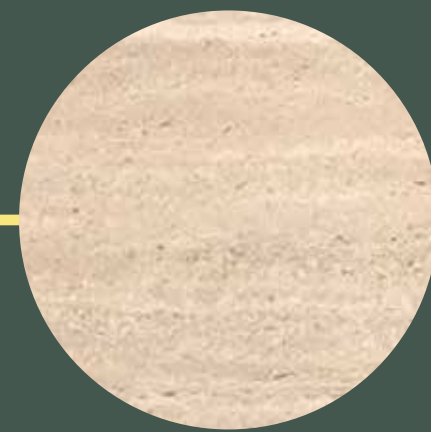
Terrace floor and ceiling in imitation wood ceramic flooring.



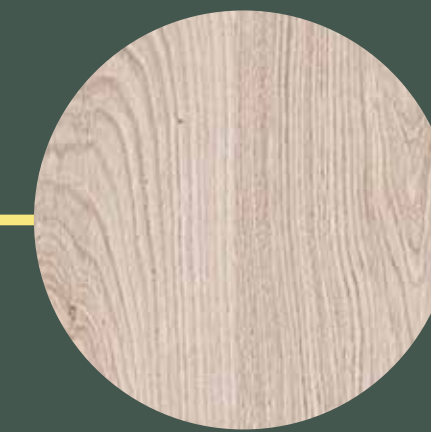
Wood access door.



Shower with white veined marble-like ceramic tiles.



Sink cover in bathrooms with beige forito travertine marble.



Ceramic floor wood imitation.



Carpentry (closets, bathroom and kitchen furniture) in light provencal oak.



Render kitchen



Render amenities area



AMENITIES & SERVICES



Swimming pool
infinity type



Chill zone
on roof top



Grills on
roof top



Table area
with pergolas
on roof top



Swimming pool
familiar



Air-conditioned
gym



Children's
area



Yoga
zone



Green
areas



Paddle
court



Kids' playroom



Palapa with
snack bar
and Grills



Koa
working



Event
hall



Guest
parking



24/7
security



Render toy library





WE ARE **ONIX LIVING** GET TO KNOW US

WE CREATE PLANNED COMMUNITIES INTEGRATED WITH THE NATURAL ENVIRONMENT

+850 UNITS DELIVERED
IN RECENT YEARS.

VILLALTA
LAGUNA

ZIENNA
Cancún

 Saumeria

 KOA TOWERS

L A R E S E R V A
ALDEA SAVIA

ALDEA SAVIA
TULUM

 AREKA TOWERS

C O P A L
TULUM

