







Welcome to Paradise  
≈





## About Us

Experience a unique *Way of Life* at Kauil Tulum.  
83 Exclusive Condominiums inspiring peace and tranquility in one of the natural wonders of Tulum. Immerse yourself in this lifestyle with amenities and quality finishes second to none.

Located just blocks away from the Kukulcan Avenue and minutes away from the beach in the new upscale area - *Region 15*.



## Why Tulum?

Tulum is one of the most visited destinations in the world! With an explosive growth in recent time, real estate investors around the world have a real opportunity to earn 8-14% average return on managed rental properties.

Visitors come to see the Mayan Ruins, beautiful beaches, the jungles and the Bohemian atmosphere mixed with a touch of luxury and delectable gastronomy.

The exponential growth in popularity has propelled the development of the Tulum International airport which will open by 2024.

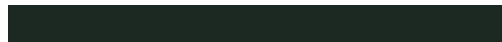






## Master Plan

A tranquil abode nestled within the confines of the jungle. Built on 3,696 square meters, potential residents can choose between *studio*, *one* or *two bedroom lock off condominiums*, with an option of a *private rooftop* or *balcony* in all units overlooking the native jungle.





## Studio

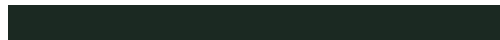
528 sqft / 50 sqm  
USD \$145,000 | \$2,900,000 MXN





## One Bedroom

816 sqft / 75.80 sqm  
USD \$220,001.92 | \$4,400,038.40 MXN



## One Bedroom + Rooftop

1,631 sqft / 151.50 sqm

USD \$375,000.38 | \$7,500,007.60 MXN

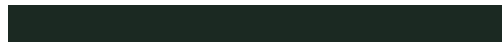
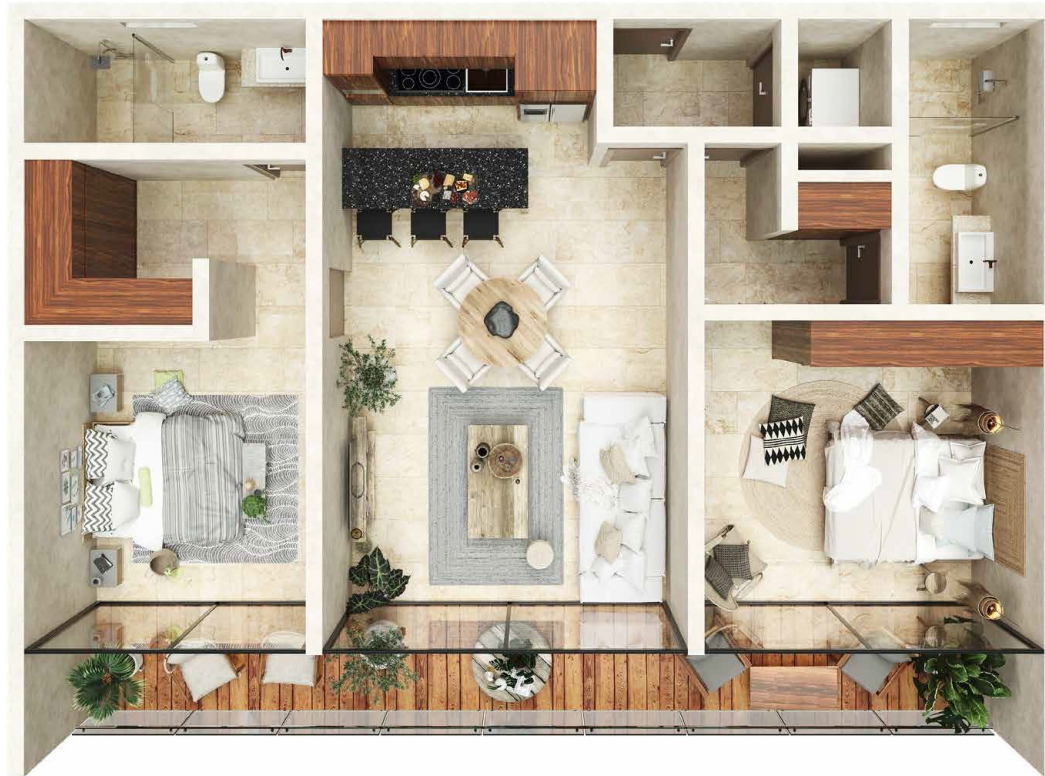




## Two Bedroom Lock Off

1,246 sqft / 115.75 sqm

USD \$340,000.58 | \$6,800,011.60 MXN



## Two Bedroom Lock Off + Rooftop

2,492 sqft / 231.50 sqm

USD \$489,999.85 | \$9,799,997 MXN





## Location





## Finishes

- ≈ Local culture inspired architecture and finishes
- ≈ Travertine marble floors
- ≈ Use of Chukum material
- ≈ Spanish granite on kitchen countertops
- ≈ Mayan local stone
- ≈ Regional Tzalam wood





## Amenities

- ≈ Community Workspace
- ≈ Glass Elevators
- ≈ Fitness Suite
- ≈ Rooftop Entertainment Space with Adult Pool & Bar
- ≈ Lower Level Pool and Jacuzzi with Grill Access
- ≈ Sauna Facility
- ≈ Lavishly Adorned Lobby
- ≈ 24-Hour Guarded Security
- ≈ Theater Area
- ≈ Complimentary Use of Bicycles & 4-Wheelers
- ≈ Lower Level Shopping & Dining
- ≈ On-Site Parking







**Beach club access to all owners**

*Mia*  
BY  
*Selina*

GRUPO  
ROSANEGRA

ULTRA HIGH END ENTERTAINMENT RESTAURANTS