



Connect with nature in...

Porta Marina

Departamentos Sustentables

YUCATÁN.



Porta Marina

Departamentos Sustentables

Welcome to an exclusive development on the Yucatán coast, just 30 minutes from Mérida.

The residences are designed for those who value privacy and tranquility. These residences combine luxury and sustainability in the most privileged area of the beach.

Location & Amenities



A SEASIDE LIFESTYLE

Located in San Benito, Km 24.5, our residences offer an unmatched location in the best area—right on the beach with direct access to the sea.

You'll be close to supermarkets, local shops, restaurants, water activities, and more, ensuring that everything you need is within easy reach.

nearby you will find:

- Mérida, 30 min.
- Aeropuerto de Mérida a 40 min.
- Chichén Itza y Valladolid 1 hr.

your life in sustainable spaces

This project is built on the front line and consists of 5 luxury residences, all with sea views. Two of them feature private roof gardens.

Solar panels are installed in

- each residence and in the common areas.

- Storage rooms for beach supplies are available for each residence.

Second-floor residences feature

- private roof gardens.

Battery backup systems

- provide power in case of electrical outages from CFE.

- Video surveillance system.

- Guardhouse with bathroom.

A water treatment plant equipped with the most advanced technology, including filters, softeners, and a pressurization system.

- Controlled access from both the beach and the street.

Covered parking with capacity for

- two vehicles.

- Each residence has a reverse osmosis system, delivering ultrapure water 24/7.

- A geotube system is in place for beach conservation.

- Charging outlets in the parking area for electric vehicles.

- Pergola in the beach area.

NEVER RUN OUT OF POWER

Each residence is equipped with solar panels and an emergency battery system to ensure savings and comfort, so you never run out of energy.



RAMP PARKING SYSTEM

Each residence includes 1 ground-level parking space plus 1 ramp-level parking space.

(Total of 2 parking spaces per residence).



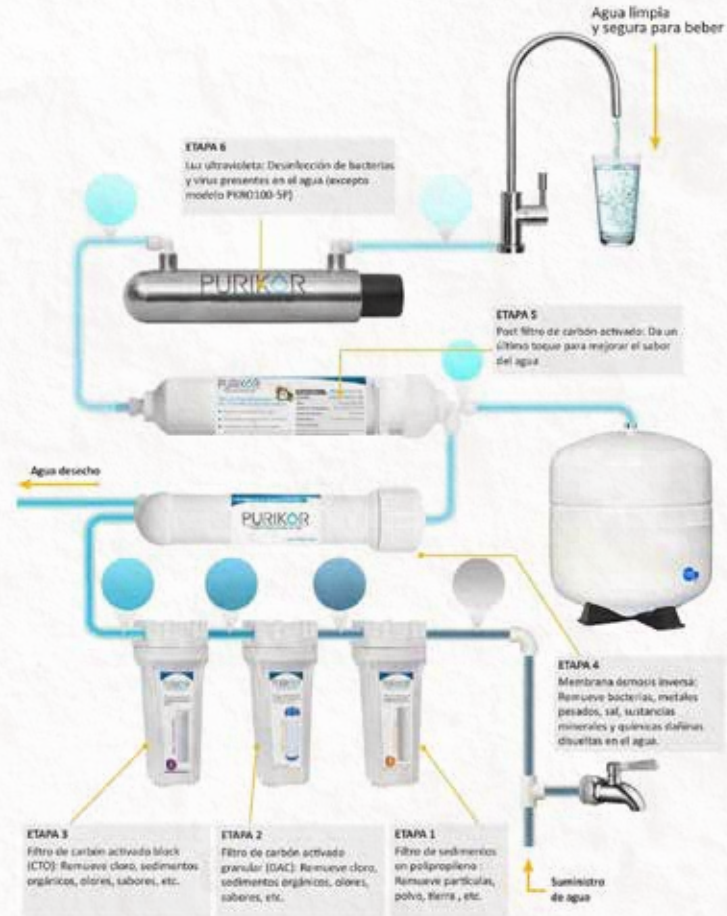
HYDRAULIC SYSTEM

Water Supply Process at Conjunto Porta Marina



Reverse Osmosis

Water Purification Process







LOBBY AND GROUND FLOOR


AMENITIES



 1. PARKING LOT

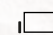
 2. LOBBY

 3. COMMON AREAS AND RESTROOM

 4. INDOOR TERRACE

 5. BEACH FRONT POOL

 6. OPEN BEACHES AREAS

 7. STORAGE ROOMS

 8. PERGOLA IN THE BEACH AREA

ACCES FACADE



SEA VIEW
FACADE



Porta
Marina
Departamentos Sustentables

DISTRIBUTION

Pedestrian and vehicular access

SEA VIEW

— ROOF GARDEN

— NIVEL 2

— NIVEL 1

— GROUND FLOOR



GROUND FLOOR



DEPARTMENT 1
172.5 m²

🚗 1. PARKING SPOT

🛏️ 2. Master Bedroom with Bathroom and Walk-in Closet

🛏️ 3. Bedrooms with Bathroom and Closet

🧺 4. Laundry Room

🚽 5. POWDER ROOM

🍳 6. KITCHEN

🏠 7. BALCONY

🍷 8. Lounge and Dining Area

⚙️ 9. Mechanical Room

🚪 10. GUARDROOM

🚿 11. Guard's Bathroom

🏠 12. ENTRANCE HALL

🚽 13. Restrooms (Common Area)

🏠 14. Lounge (Common Area)

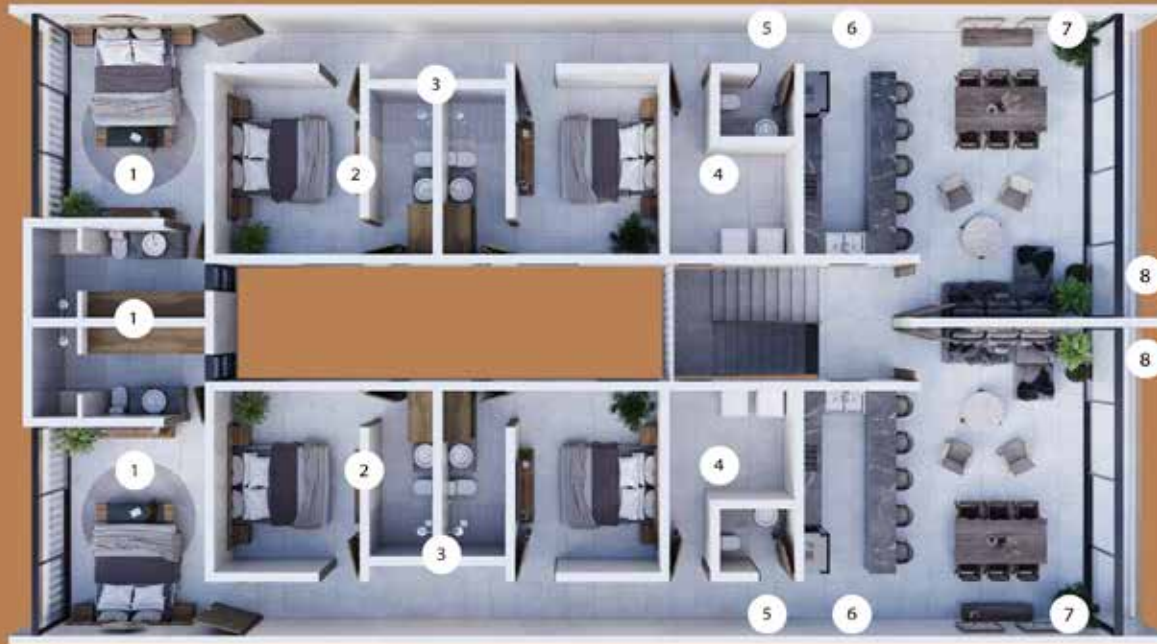
🍷 15. Dining Room (Common Area)

🏠 16. BEACH FRONT POOL

🏠 17. STORAGE ROOMS

🌿 18. PERGOLA IN THE BEACH AREA

FLOOR LEVEL 1








Pedestrian
and vehicular access

DEPARTMENT 2
172.5 m2

SEA VIEW

DEPARTMENT 3
172.5 m2

-  1. Master bedroom with bathroom and walking closet
-  2. Secondary bedroom
-  3. Secondary bathroom and closet
-  4. Laundry room
-  5. POWDER ROOM

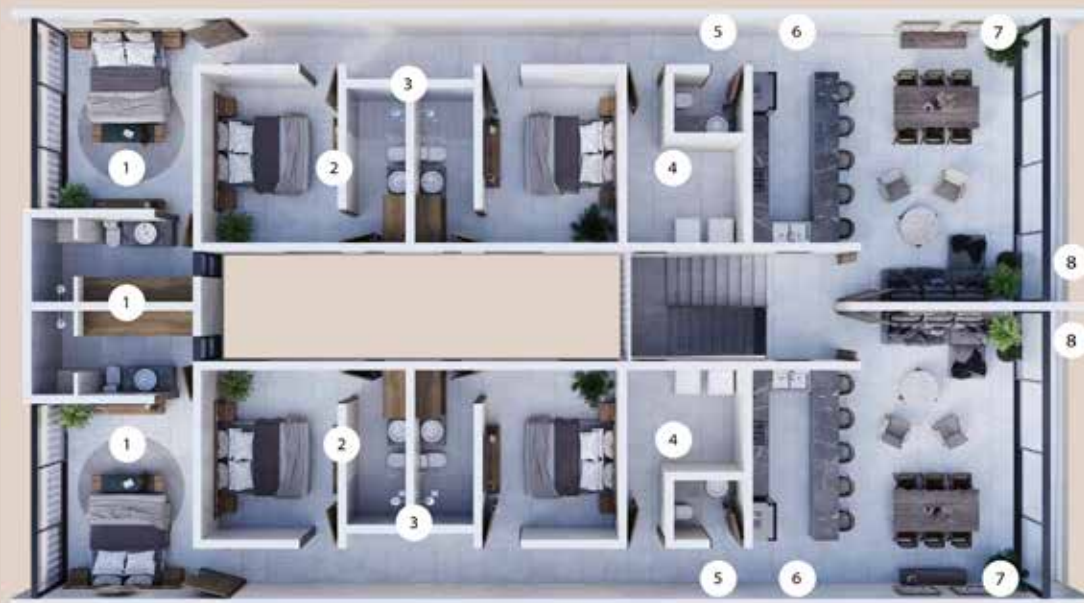
-  6. KITCHEN
-  7. Lounge and dining area
-  8. BALCONY






FLOOR LEVEL 2




PRIVATE ROOF GARDEN

DEPARTAMENT 4
217 m2

DEPARTAMENT 5
217 m2



-  1. Master bedroom with bathroom and walking closet
-  2. Secondary bedroom
-  3. Secondary bathroom and closet
-  4. Laundry room
-  5. Powder room

-  6. Kitchen
-  7. Lounge and dining area
-  8. Balcony
- 9. Private roof garden



Lounge and dining area



Master bedroom



Bathroom and walking closet



Secondary bedroom



Private roof garden

Aerial view

