

PORTFOLIO

2023 | 2024



ECO SMART
ARCHITECTURE

POR
TFO
LIO

WELCOME

Thank you for considering Eco Smart Architecture as a new partner for your business. Together we can work on projects that are both exceptional and cost-effective for you.



CONTENT

- 1 About our firm
- 2 Our mission & vision
- 3 Our services & softwares
- 4 Portfolio showcase
- 5 Design progression
- 6 Our values
- 7 Our team
- 8 Why Us

ECO SMART ARCHITECTURE

1. ABOUT OUR FIRM

Our firm specializes in delivering high-quality, low-cost architectural and engineering drafting services that not only meet but exceed the modern-day demands of sustainability and efficiency.

2. OUR MISSION & VISION

MISSION

As a leading architectural drafting firm, Eco Smart Architecture is dedicated to providing cutting-edge technology that meet the requirements of our clients, partners and the environment.

VISION

Our vision at Eco Smart Architecture is to be the leading provider of drafting solutions in the US by integrating smart technology and sustainable work-place practices, making sure that each project we take on exceeds the expectations of efficiency, cost-effectiveness, and environmental responsibility

3. OUR SERVICES



As Built Drawings



3D Rendering

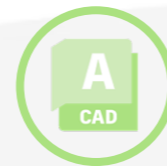


Schematic Design



Construction Drawings

SOFTWARES WE USE



Autocad



Revit



Sketchup



Photoshop



InDesign



Illustrator



Enscape



Lumion



3D Max

The background of the slide is a detailed architectural floor plan, tilted at an angle. It shows a grid of rooms and corridors, with various rooms labeled with numbers and letters. A central area contains a table and chairs, possibly a meeting room or a common area. The lines are thin and grey, with some thicker lines indicating walls or structural elements.

4. PORTFOLIO

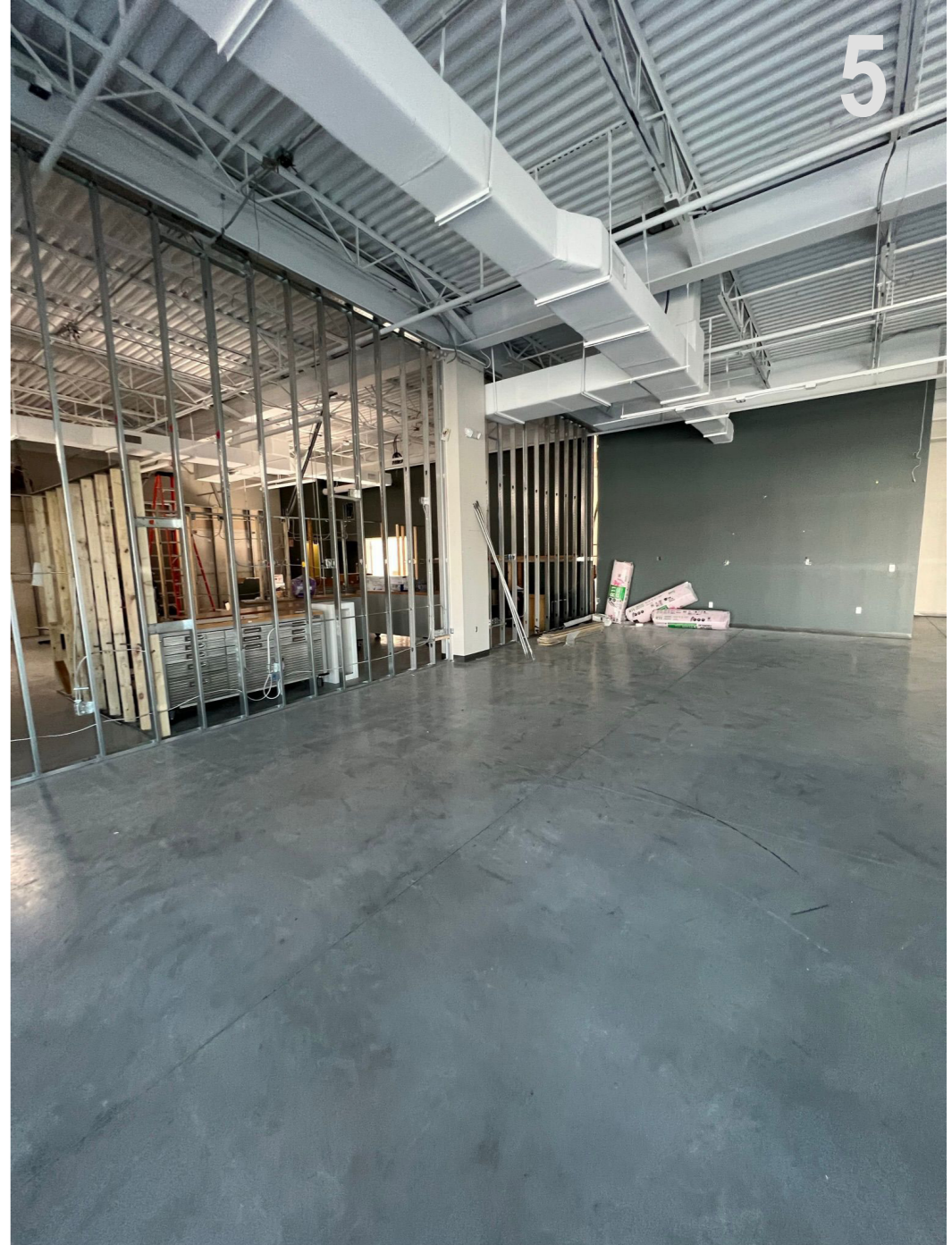
4.1 SITE VISIT



1



2



6

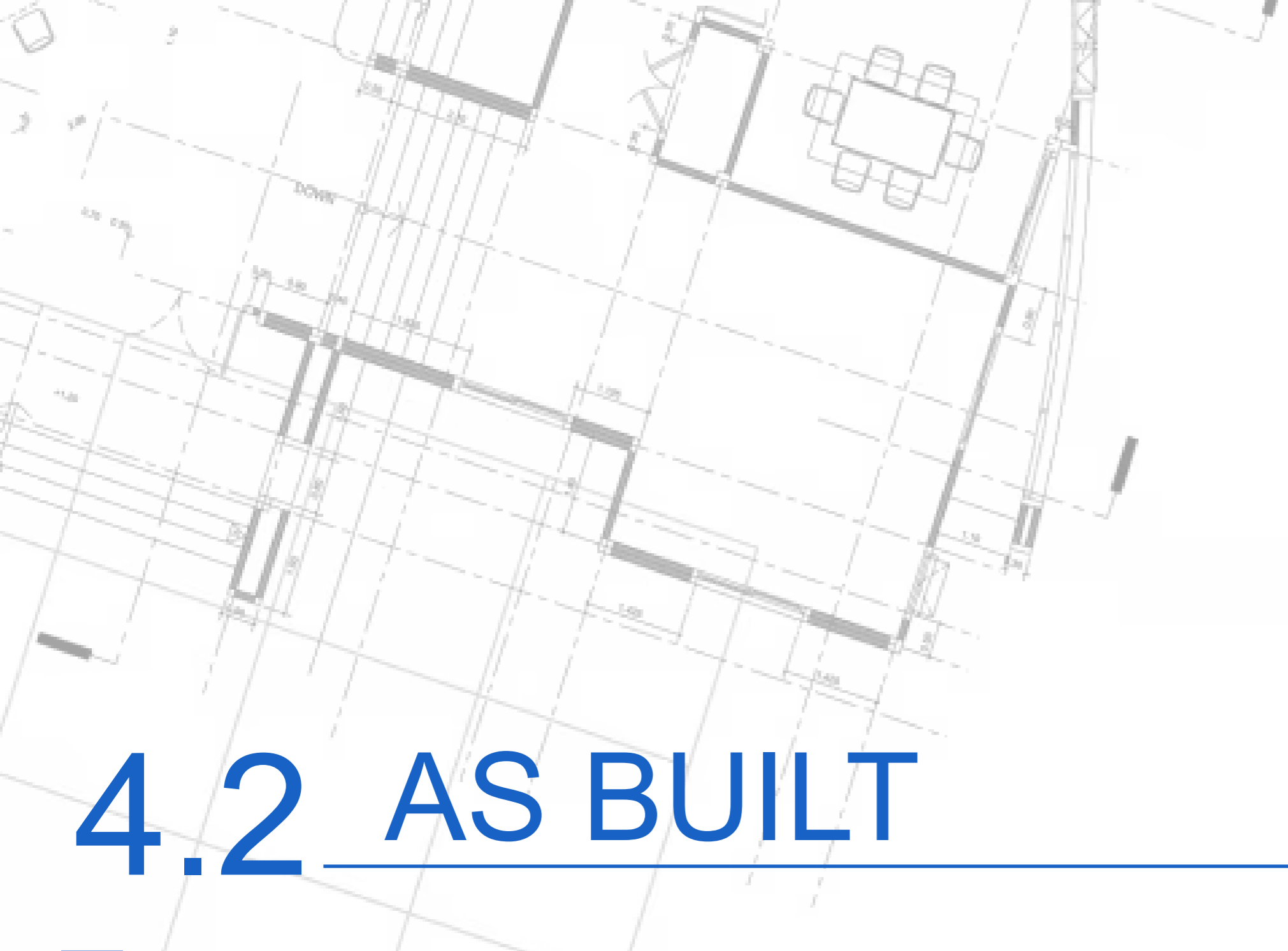


7

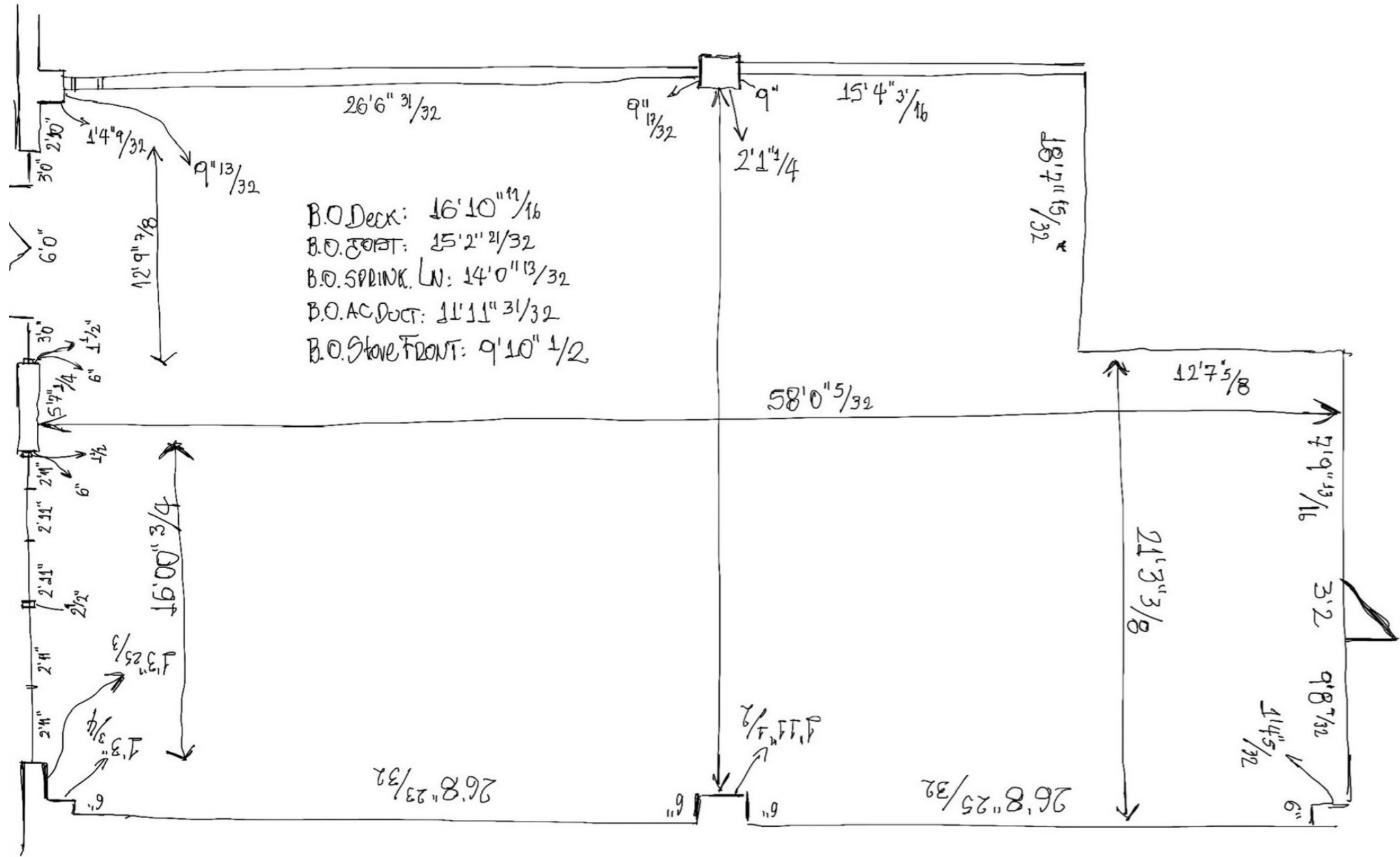


8

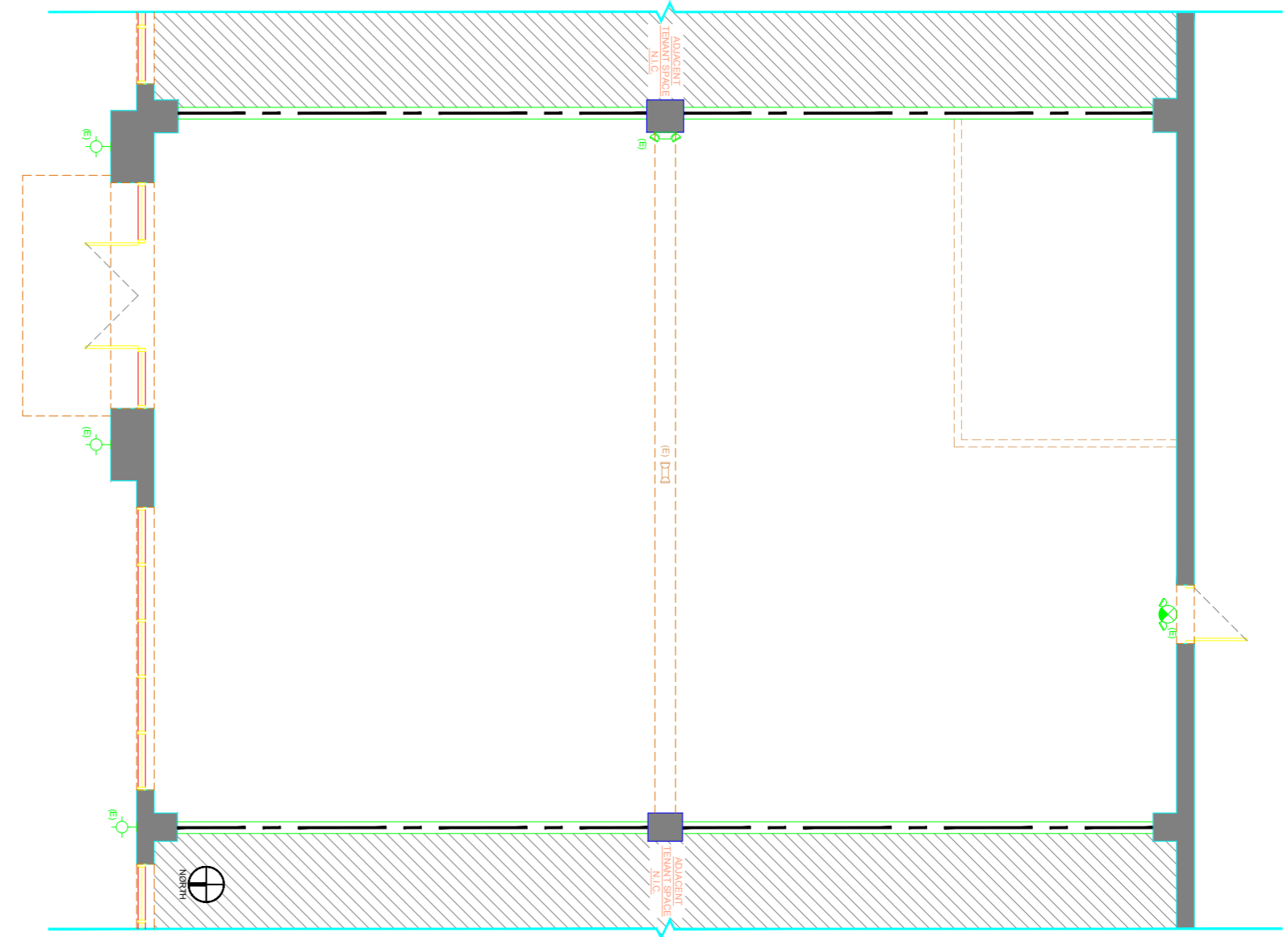




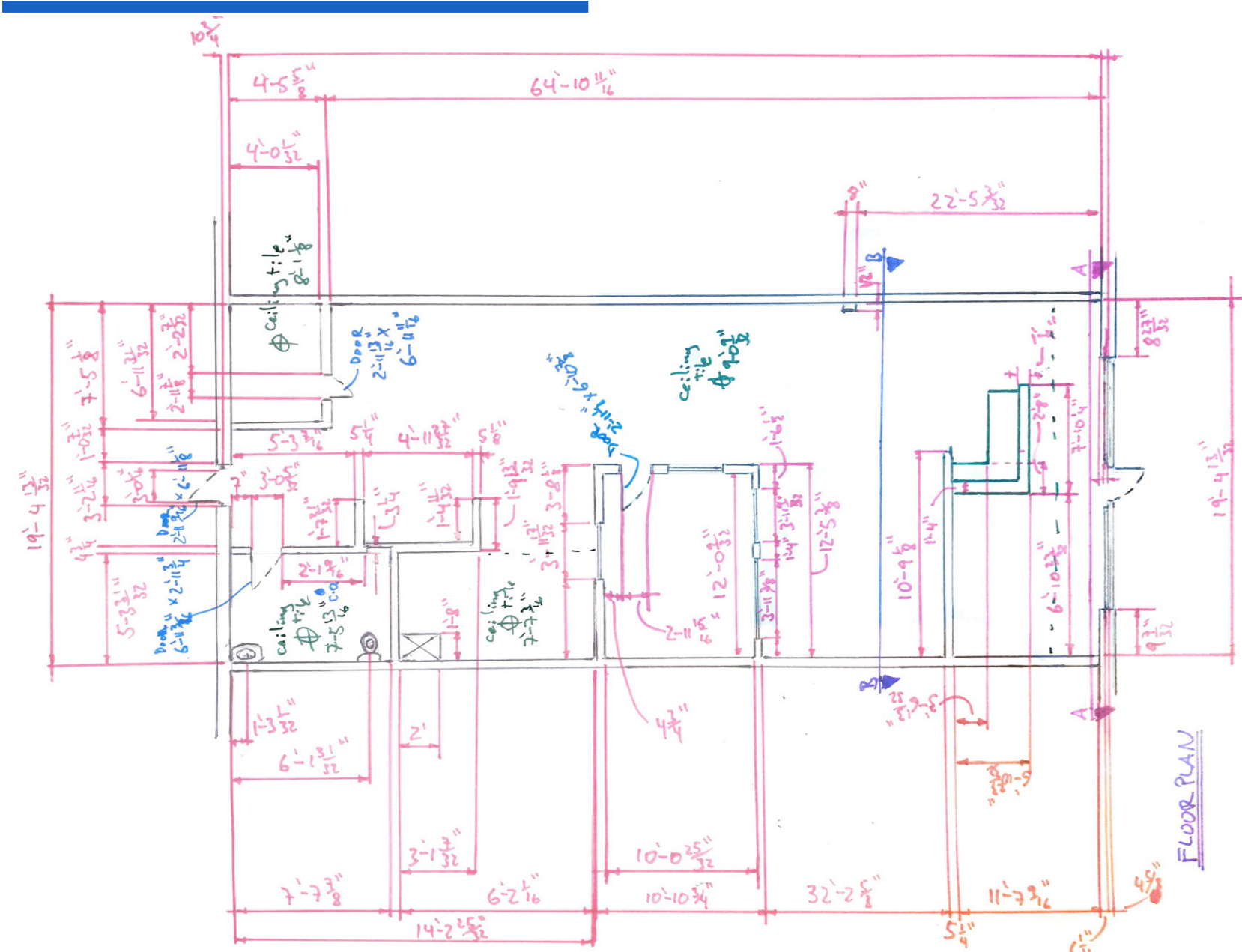
4.2 AS BUILT



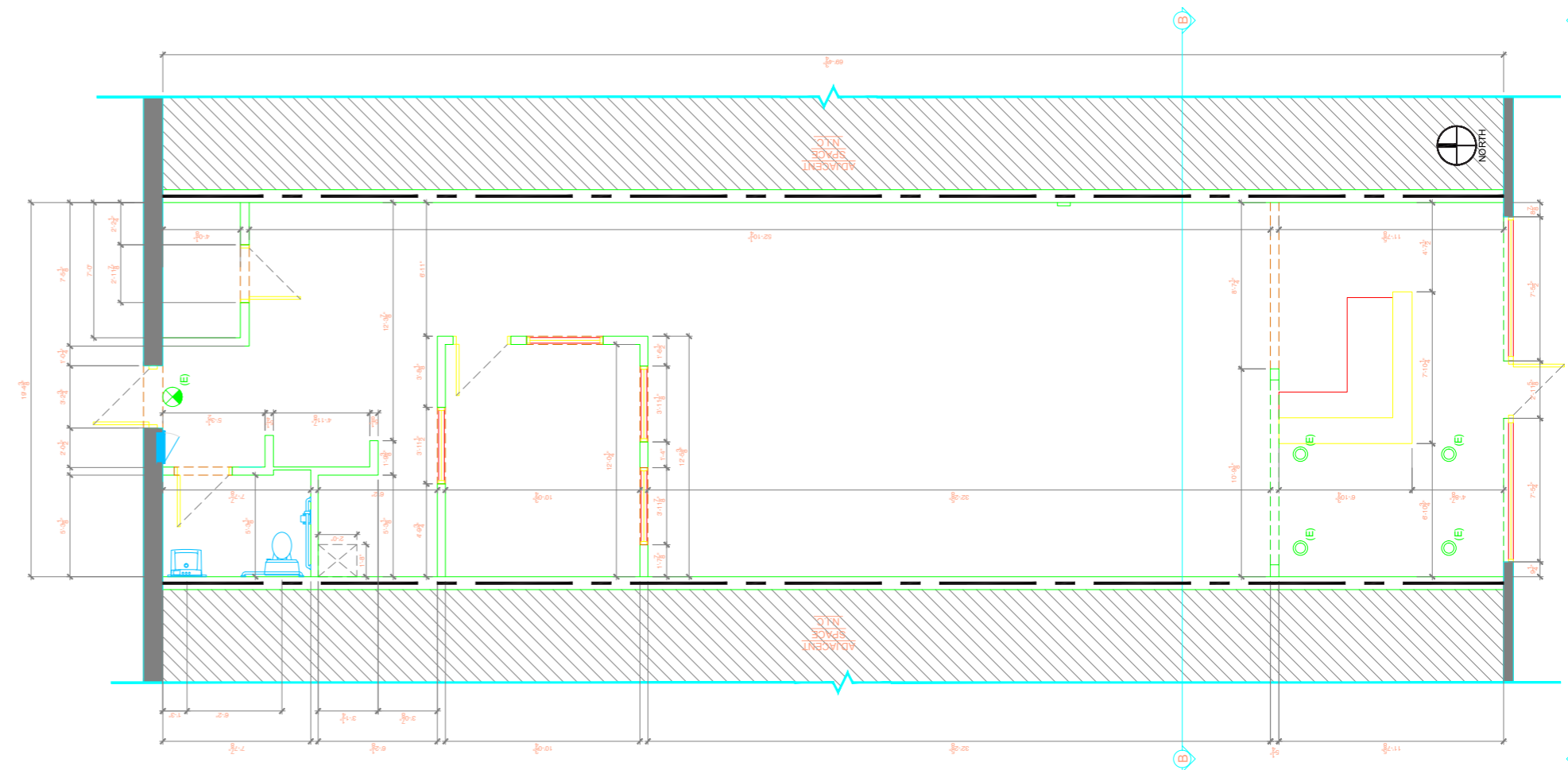
Site measurements



From a hand- made plan to an AutoCAD drawing



Site measurements



From a hand- made plan to an AutoCAD drawing

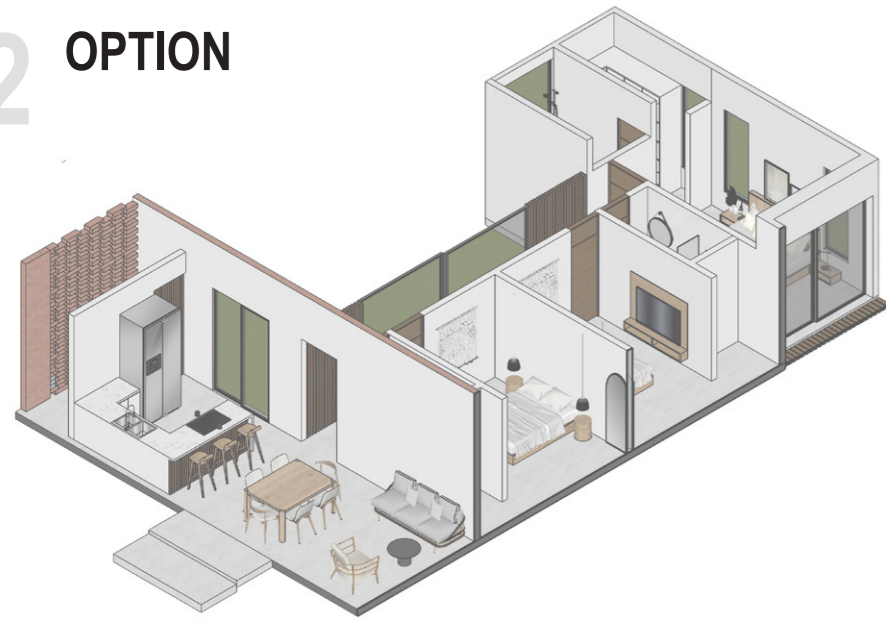


4.3 SCHEMATIC DESIGN

1 OPTION

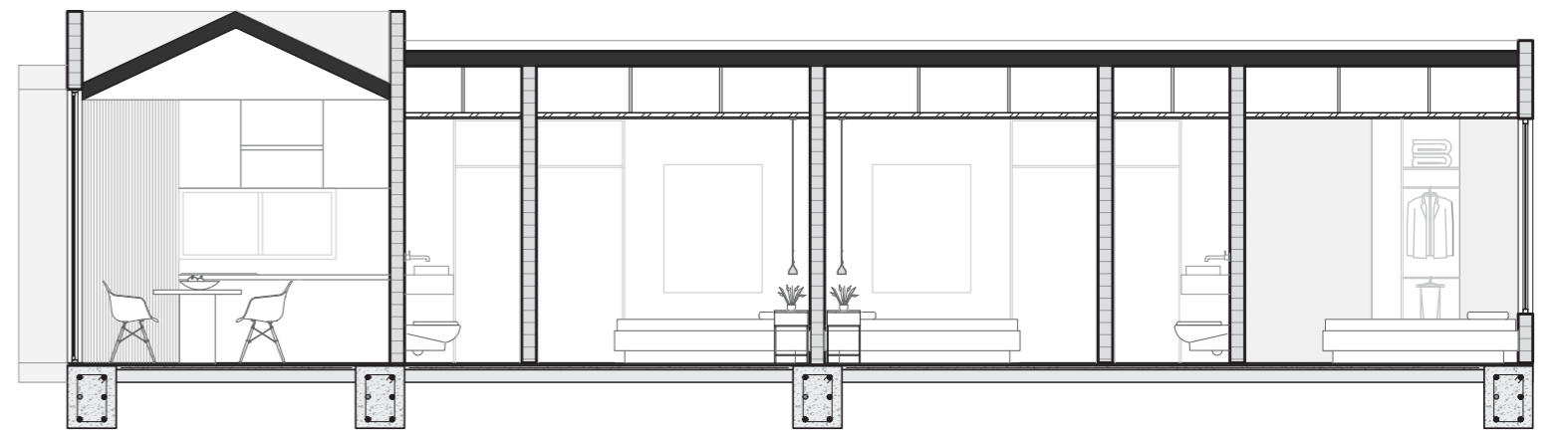
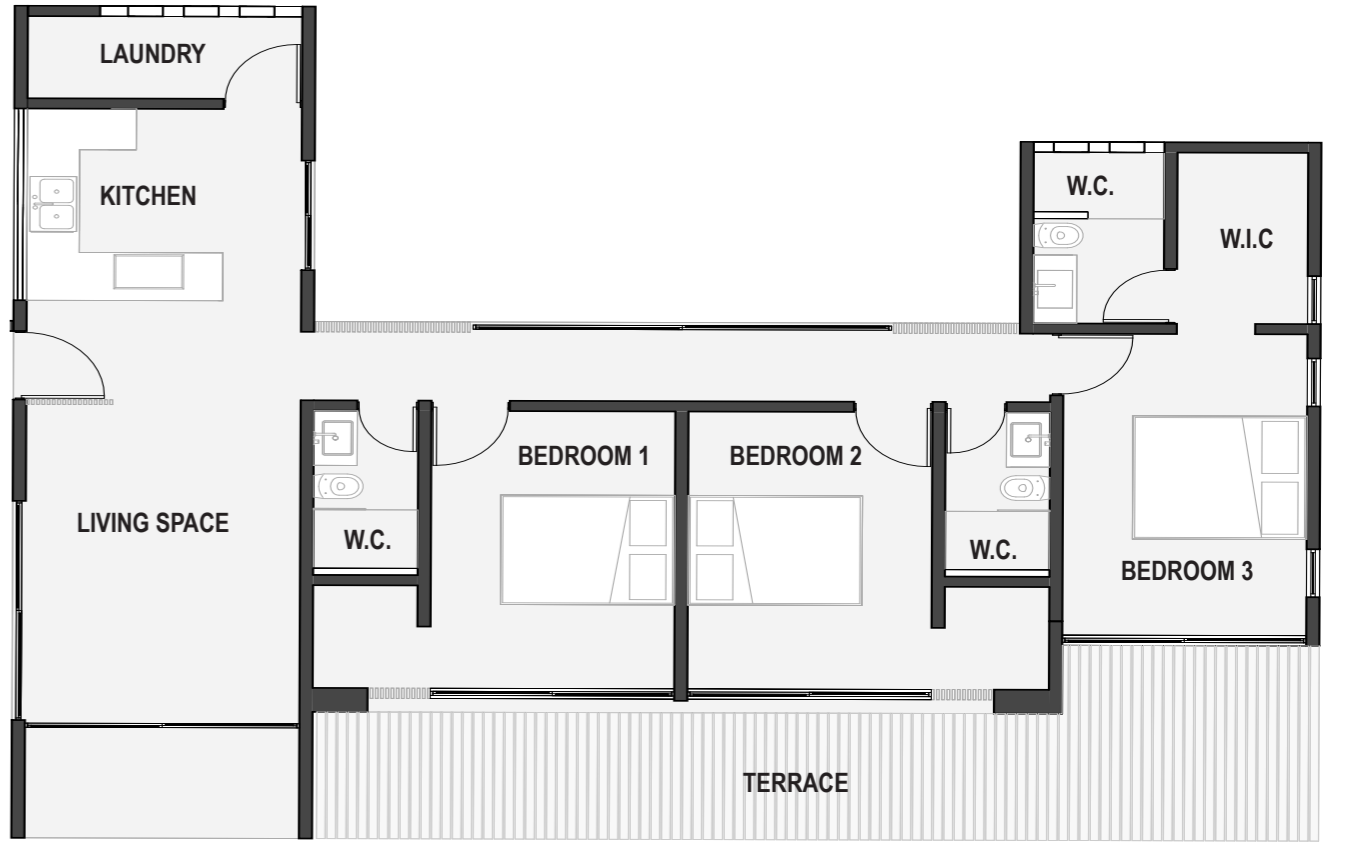


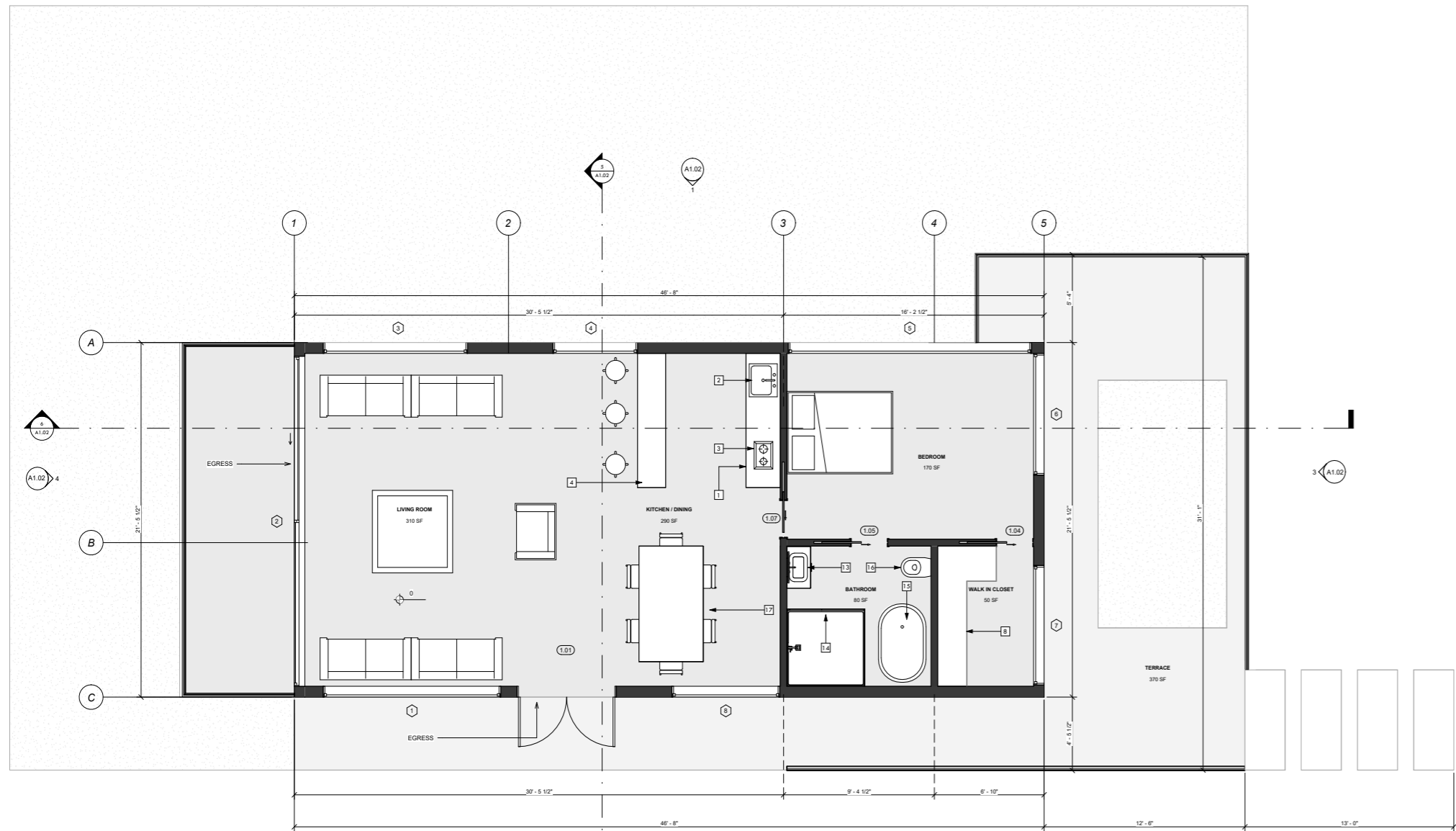
2 OPTION



3 FLOOR PLAN

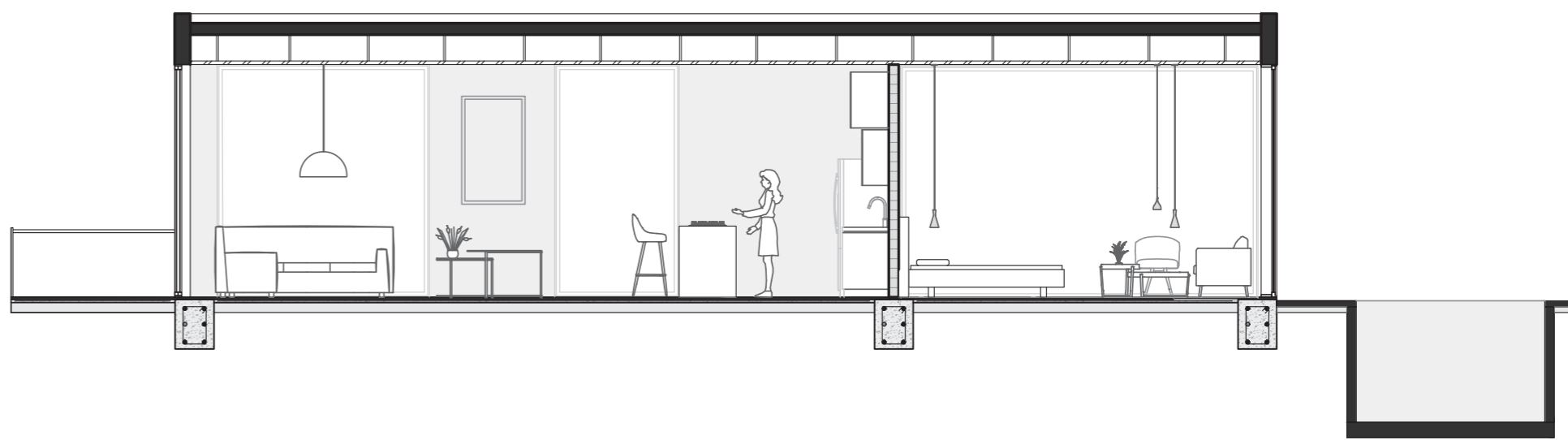
3 APPROVED PLAN



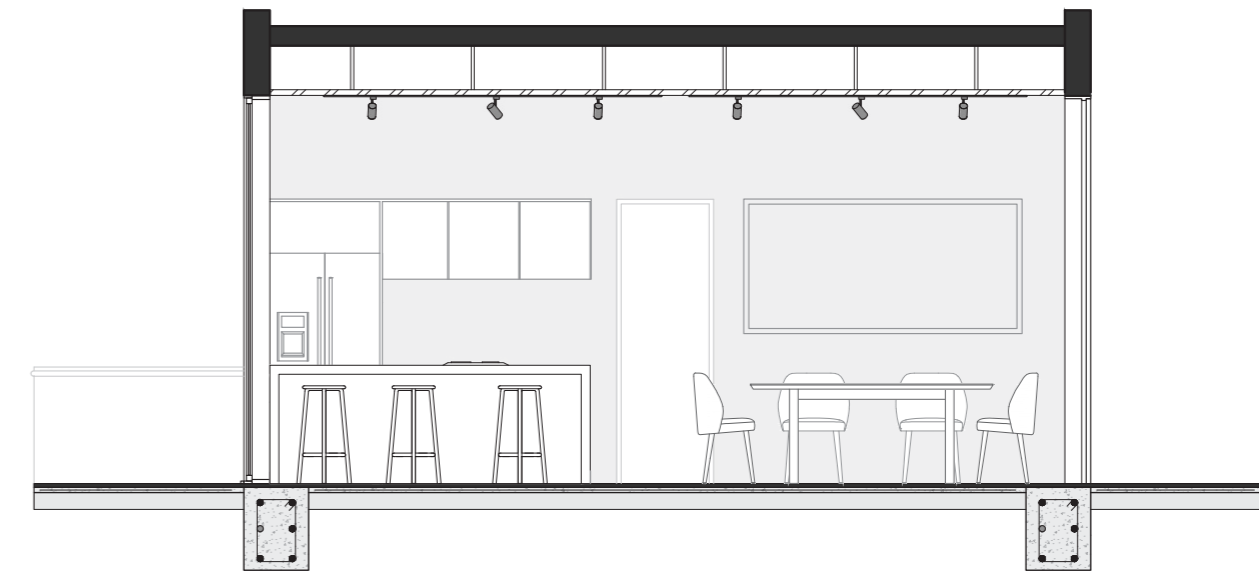


1 FLOOR PLAN

2 SECTION A-A



3 SECTION B-B





4.4 RENDERERS













4.5 CONSTRUCTION DRAWINGS

ECO SMART ARCHITECTURE

COMERCIAL PROJECT

LOCATION: Katy, Texas.

TYPE OF PROJECT: Pet Grooming Supermarket

YEAR: 2023

DESCRIPTION:

We prepared a full architectural set of plans to be submitted to the local authority to obtain Building Permit for construction.

VICINITY MAP
N.T.S.

SITE PLAN
N.T.S.

SHEET INDEX

LEGEND
● DENOTES CURRENT SHEET
○ DENOTES SHEET WAS SUPERCEDED

SHEET NO.	SHEET TITLE	DATE
CS-1	COVER SHEET	●
CS-2	GENERAL NOTES	●
CS-3	ACCESSIBILITY PLAN	●
CS-3.1	ACCESSIBILITY DETAILS	●
CS-4	UL LISTINGS	●
CS-4.1	UL LISTINGS	●
LS-1	LIFE SAFETY PLAN	●
ARCHITECTURAL		
A-1	FLOOR PLAN	●
A-1.1	EQUIPMENT PLAN	●
A-2	REFLECTED CEILING PLAN	●
A-3	FINISH PLAN	●
A-4	INTERIOR ELEVATIONS	●
A-4.1	MILLWORK	●
PLUMBING		
P-1	PLUMBING NOTES & DETAILS	●
P-2	SANITARY FLOOR PLAN & RISER	●
P-3	WATER FLOOR, GAS FLOOR PLAN & WATER RISER	●
P-4	GAS ROOF PLAN & RISER	●
MECHANICAL		
M-1	MECHANICAL NOTES & SCHEDULES	●
M-2	HVAC FLOOR PLAN	●
M-3	HVAC ROOF PLAN	●
M-4	MECHANICAL DETAILS	●
ELECTRICAL		
E-1	ELECTRICAL PLAN NOTES AND RISER DIAGRAM	●
E-2	LIGHTING PLAN	●
E-3	POWER PLAN	●
E-4	POWER PLAN ROOF	●
E-5	PANEL SCHEDULES	●

SCOPE OF WORK

TENANT IMPROVEMENT CONSISTING OF THE CONSTRUCTION OF A NEW NET FACILITY WITHIN AN EXISTING BUILDING SHELL TO INCLUDE ALL ELECTRICAL, PLUMBING AND MECHANICAL MODIFICATIONS, INTERIOR PARTITIONS AND EQUIPMENT. NO STRUCTURAL OR STOREFRONT MODIFICATIONS ARE PART OF THE SCOPE.

PROJECT DIRECTORY

OCCUPANT LOAD CALCULATIONS

FUNCTION OF SPACE	AREA	OCCUPANT LOAD FACTOR	NUMBER OF OCCUPANTS
BUSINESS	1,073 SF	100 GROSS	11
MERCANTILE	1,464 SF	80 GROSS	25
MERCANTILE STORAGE	261 SF	300 GROSS	1
TOTAL			37

EGRESS REQUIREMENTS

SPACES WITH ONE EXIT OR ACCESS DOORWAY	OCCUPANCY	MINIMUM OCCUPANT LOAD SPACE	MAX. COMMON PATH OF TRAVEL DISTANCE	W/O SPRINKLER SYSTEM	WITH SPRINKLER SYSTEM
REQUIRED	B	49	100'-0"	75'-0"	100'-0"
PROVIDED	B	34	N/A	N/A	52'-11"

WALL AND CEILING FINISH REQUIREMENTS BY OCCUPANCY

GROUP	SPRINKLERED		
	INTERIOR EXIT STAIRWAYS, INTERIOR EXIT RAMPS AND EXIT PASSAGEWAYS**	CORRIDORS AND ENCLOSURE FOR EXIT ACCESS STAIRWAYS AND EXIT ACCESS RAMPS	ROOMS & ENCLOSED SPACES ¹
B	B	C ²	C

For B: 1 inch = 25.4mm, 1 square foot = 0.929 sq m

a. CLASS C INTERIOR FINISH MATERIALS SHALL BE PERMITTED FOR MANICOTTING OR PANELING OF NOT MORE THAN 1,000 SQUARE FEET OF APPLIED SURFACE AREA IN THE GRADE LOBBY WHERE APPLIED DIRECTLY TO A NONCOMBUSTIBLE BASE OR OVER FURNISH STRIPS APPLIED TO A NONCOMBUSTIBLE BASE AND FIREBLOCKED AS REQUIRED BY SECTION 903.1.1.

b. IN OTHER THAN GROUP 1-3 OCCUPANCIES IN BUILDINGS LESS THAN THREE STORES ABOVE GRADE PLANE OF OTHER THAN GROUP 1-3, CLASS B INTERIOR FINISH FOR NONSPRINKLERED BUILDINGS AND CLASS C INTERIOR FINISH FOR SPRINKLERED BUILDINGS SHALL BE PERMITTED IN INTERIOR EXIT STAIRWAYS AND RAMPS.

c. REQUIREMENTS FOR ROOMS AND ENCLOSED SPACES SHALL BE BASED UPON SPACES ENCLOSED BY PARTITIONS WHERE A FIRE RESISTANCE RATING IS REQUIRED. FOR STRUCTURAL ELEMENTS THE ENCLLOSURE PARTITIONS SHALL EXTEND FROM THE FLOOR TO THE CEILING. PARTITIONS THAT DO NOT COMPLY WITH THIS SHALL BE CONSIDERED ENCLOSED SPACES AND THE ROOMS OR SPACES ON BOTH SIDES SHALL BE CONSIDERED ONE. IN DETERMINING THE APPLICABLE REQUIREMENTS FOR ROOMS AND ENCLOSED SPACES, THE SPECIFIC OCCUPANCY THEREOF SHALL BE THE GOVERNING FACTOR REGARDLESS OF THE GROUP CLASSIFICATION OF THE BUILDING OR STRUCTURE.

d. LOBBY AREAS IN GROUP A-1, A-2 AND A-3 OCCUPANCIES SHALL NOT BE LESS THAN CLASS B MATERIALS.

e. CLASS C INTERIOR FINISH MATERIALS SHALL BE PERMITTED IN PLACES OF ASSEMBLY WITH AN OCCUPANT LOAD OF 300 PERSONS OR LESS.

f. FOR PLACES OF RELIGIOUS WORSHIP, WOOD USED FOR ORNAMENTAL PURPOSES, TRUSSES, PANELING OR CHANCEL FURNISHING SHALL BE PERMITTED.

g. CLASS B MATERIAL IS REQUIRED WHERE THE BUILDING EXCEEDS TWO STORES.

h. CLASS C INTERIOR FINISH MATERIALS SHALL BE PERMITTED IN ADMINISTRATIVE SPACES.

i. CLASS B MATERIALS SHALL BE PERMITTED IN ROOMS WITH A CAPACITY OF FOUR PERSONS OR LESS.

j. CLASS B MATERIALS SHALL BE PERMITTED AS MANICOTTING EXTENDING NOT MORE THAN 48 INCHES ABOVE THE FINISHED FLOOR IN CORRIDORS AND EXIT ACCESS STAIRWAYS AND RAMPS.

k. FINISH MATERIALS AS PROVIDED FOR IN OTHER SECTIONS OF THIS CODE.

l. APPLIES WHEN PROTECTED BY AN AUTOMATIC SPRINKLER SYSTEM INSTALLED IN ACCORDANCE WITH SECTION 903.3.1.1 OR 903.3.1.2.

m. AMBULATORY CARE FACILITIES SHALL BE PROVIDED WITH CLASS A OR B MATERIALS.

CODE INFORMATION

- 2015 INTERNATIONAL BUILDING CODE
- 2018 INTERNATIONAL FIRE CODE
- 2015 INTERNATIONAL ENERGY CODE
- 2015 INTERNATIONAL FUEL GAS CODE
- 2015 INTERNATIONAL PLUMBING CODE
- 2015 INTERNATIONAL MECHANICAL CODE
- NFPA 70, 2014 NATIONAL ELECTRIC CODE
- 2012 TEXAS ACCESSIBILITY STANDARDS / ADA

BUILDING DESCRIPTION

- NUMBER OF FLOORS IN BUILDING: 1
- CONSTRUCTION TYPE: II-B
- FLOORS OF PROPOSED RENOVATION: 1
- PREVIOUS OCCUPANCY: NO
- PROPOSED OCCUPANCY: B
- ADJACENT OCCUPANCY (NORTH/EAST): NO
- ADJACENT OCCUPANCY (SOUTH/WEST): NO
- REQUIRED SEPARATION PER IBC 508.4: 1HR
- EXTERIOR STOREFRONT RENOVATION? YES NO
- PROPOSED STRUCTURAL ALTERATIONS? YES NO
- ENERGY CALCULATION ATTACHED? YES NO
- TOILET FACILITIES PROVIDED? YES NO
- EXISTING FIRE SPRINKLER? YES NO
- EXISTING FIRE ALARM SYSTEM? YES NO
- FIRE SPRINKLER SYSTEM MODIFICATIONS? YES NO
- FIRE ALARM SYSTEM MODIFICATIONS? YES NO

* DEFERRED SUBMITTALS, G.C. TO PROVIDE SHOP DRAWINGS FOR MODIFICATIONS TO THE FIRE SPRINKLER AND ALARM SYSTEMS.

FIRE RESISTANCE RATING

CONSTRUCTION TYPE	TYPE II-B
STRUCTURAL FRAME	0
BEARING WALLS:	
EXTERIOR	0
INTERIOR	0
NONBEARING WALLS AND PARTITIONS:	
EXTERIOR	0
INTERIOR	0
FLOOR CONSTRUCTION:	
INCL. SUPPORTING BEAMS, JOISTS	0
ROOF CONSTRUCTION:	
INCL. SUPPORTING BEAMS, JOISTS	0

c. IN ALL OCCUPANCIES, HEAVY TIMBER SHALL BE ALLOWED WHERE A 1-HOUR OR LESS FIRE-RESISTANCE RATING IS REQUIRED.

PLUMBING FIXTURE REQUIREMENTS

OCCUPANCY	REQUIRED	PROVIDED
WATER CLOSETS		
1 PER 25 FOR THE FIRST 50 AND 1 PER 50 FOR THE REMAINDER EXCEEDING 50	1	2
LAVATORIES		
1 PER 40 FOR THE FIRST 80 AND 1 PER 80 FOR THE REMAINDER EXCEEDING 80	1	2
WATER FOUNTAIN		
1 PER 100 OCCUPANTS	1	0*
SERVICE SINK		
1	1	1

* WATER BOTTLES WILL BE PROVIDED TO THE PUBLIC AT THE COFFEE BAR.

EXISTING CONDITIONS NOTES

STOP AND READ
THE CONTRACTOR AND SUB-CONTRACTORS SHALL NOT INITIATE ANY WORK UNTIL EXISTING FIELD CONDITIONS ARE PROPERLY VERIFIED. THIS SHALL HOLD TRUE FOR FIRST GENERATION AND 2ND GENERATION SPACES, WHEN DEMOLITION IS REQUIRED, THAT WILL BE PERMITTED TO EXPOSE CONDITIONS. THESE VERIFICATIONS SHALL INCLUDE BUT NOT LIMITED TO: DIMENSIONS BOTH HORIZONTAL AND VERTICAL, ELECTRICAL SERVICE PANELS LOCATION AND VOLTS/PAGE, LOCATION/TYPE OF ROOF MOUNTED HVAC EQUIPMENT, CONFIRM THAT INTERIOR HVAC HUNG UNITS HAVE PROPER SUPPORT CONNECTIONS FOR EXISTING STRUCTURE, FIRE SPRINKLER MAIN RUNS, TOILET ROOM DIMENSIONS, DOOR SWING FOR DOORS TO REMAIN AND ETC. IF NOT VERIFIED AND DISCOVERED AT A LATER TIME, THE CONTRACTOR SHALL REIMBURSE THE ARCHITECT FOR THE REVISION FEE. THIS DOES NOT INCLUDE HIDDEN WORK, I.E. PITCH OF SANITARY LINES, ACTUAL CONDITIONS OF EXISTING HVAC EQUIPMENT, STRUCTURAL COLUMNS/BEARING WALLS OR CONDITIONS OF GREASE INTERCEPTORS AND ETC.

ISSUE DATE: 11.01.23
PROJECT #: 372K.1358K
DRAWN BY: DR
CHECKED BY: SL/BC

COVER SHEET

CS-1

DOOR HEAD DETAIL SCALE: N.T.S. 5

ARCHITECTURAL SYMBOLS

SECTION
SECTION NUMBER
SHEET NUMBER (WHERE SECTION IS DRAWN)

DETAIL
DETAIL NUMBER
SHEET NUMBER

INTERIOR ELEVATION(S)
ARROWS INDICATE ELEVATIONS DRAWN ELEVATION NUMBER

KEYNOTE/EQUIPMENT
DRAWING NOTE (NUMBER)

STEP
CHANGE IN FLOOR HEIGHT

CONTROL OR DATUM POINT
ELEVATION OR POINT
DESCRIPTION OF POINT (FIN FLOOR, TOP OF PLATE, TOP OF T.B.)

REVISION REFERENCE
REVISION NUMBER

DOORS
DOOR NUMBER
NEW DOOR
EXISTING DOOR SHALL REMAIN

WALL
WALL TYPE

FINISHES
FINISH TYPE
EXISTING TO REMAIN
TO BE DEMOLISHED
RELOCATED

ABBREVIATIONS
EXISTING TO REMAIN
TO BE DEMOLISHED
RELOCATED

WALL PARTITION LEGEND

EXISTING EXTERIOR WALL TO REMAIN	NEW INTERIOR PARTITION
EXISTING INTERIOR PARTITION TO REMAIN	NEW HEADER ABOVE
EXISTING WALL/PARTITION TO BE REMOVED	NEW KNEE WALL BELOW
EXISTING TENANT DEMISING WALL TO REMAIN	

STANDARD DOOR INSTALLATION DETAIL SCALE: N.T.S. 2

ATTACHMENT SCHEDULE

MATERIAL OF BUILDING	ATTACHMENTS & SPACING
CONCRETE SLAB	2 HLT1 H.D.F. MAX. 3/4\"/>
METAL DECK	2 #12-14 X 1\"/>
METAL DECK W/ CONCRETE	1-3/4\"/>
METAL DECK W/ LIGHTWEIGHT FILL (ZONOLITE, GYPSUM)	2 #10-14 X 1\"/>

ATTACHMENT DETAIL SCALE: N.T.S. 4

COVE BASE REQUIREMENTS DETAIL SCALE: N.T.S. 7

DOOR JAMB DETAIL SCALE: N.T.S. 6

TYPICAL PARTITION DETAIL & ACCESSORY CONDITIONS SCALE: N.T.S. 3

TRENCH REPAIR DETAIL SCALE: N.T.S. 1

GENERAL NOTES

- THESE PLANS AND SPECIFICATIONS AS INSTRUMENTS OF SERVICE ARE AND SHALL REMAIN THE PROPERTY OF THE ARCHITECT. THEY ARE NOT TO BE REPRODUCED IN PART OR IN FULL OR USED ON ANY OTHER PROJECTS EXCEPT BY AGREEMENT IN WRITING WITH AND AFTER APPROPRIATE COMPENSATION TO THE ARCHITECT.
- CONSTRUCTION SHALL FOLLOW THE LOCAL GOVERNING CODE, APPLICABLE EDITION, AS ADOPTED BY THE GOVERNING AUTHORITY. AND ALL APPROPRIATE AMENDMENTS. THE CONTRACTOR SHALL BE RESPONSIBLE FOR BUILDING THIS PROJECT IN ACCORDANCE WITH THE DRAWINGS, SPECIFICATIONS, AND STATE AND LOCAL CODES, UNLESS WRITTEN NOTIFICATION IS RECEIVED.
- THE ARCHITECT DOES NOT GUARANTEE THE PERFORMANCE OF THE PROJECT IN ANY RESPECT OTHER THAN THE ARCHITECTURAL WORK PERFORMED WHICH MEETS THE STANDARDS OF PROFESSIONAL CARE.
- THE CONTRACTOR SHALL VISIT THE SITE, BEFORE SUBMITTING PROPOSALS.
- THE CONTRACTOR SHALL COORDINATE ALL THE WORK OF ALL THE TRADES.
- THE CONTRACTOR SHALL VERIFY ALL DIMENSIONS AND CONDITIONS AT THE JOB SITE PRIOR TO STARTING ANY WORK AND NOTIFY THE ARCHITECT IN WRITING IMMEDIATELY OF ANY ERRORS OR OMISSIONS OR THE CONTRACTOR SHALL ACCEPT FULL RESPONSIBILITY FOR THE ERRORS AND OMISSIONS, DO NOT SCALE THE DRAWINGS.
- THESE PLANS, AS DRAWN AND NOTED, COMPLY WITH THE BUILDING ENVELOPE ENERGY REQUIREMENTS OF THE GOVERNING BUILDING CODE. THE CONTRACTOR SHALL FAMILIARIZE HIMSELF WITH THE GOVERNING CODE IN THEIR ENTIRETY AND BUILD IN ACCORDANCE WITH ALL PROVISIONS OF THESE CODES WHICH MAY NOT BE SPECIFICALLY ADDRESSED IN THE PLANS AND NOTES.
- THE CONTRACTOR WILL NOT SUBSTITUTE ITEMS WHICH THEY BELIEVE TO BE EQUAL OR BETTER THAN ITEMS SPECIFIED ON THESE DRAWINGS WITHOUT PRIOR NOTICE. ITEMS WHICH, WHEN SUBMITTED, REQUIRE APPROVAL OF THE BUILDING OFFICIAL WILL BE SUBMITTED TO THE BUILDING OFFICIAL, THE TENANT, AND THE ARCHITECT.
- THE CONTRACTOR IS RESPONSIBLE FOR ADEQUATE BRACING, STRUCTURAL, AND NON-STRUCTURAL MEMBERS DURING CONSTRUCTION.
- ALL FRAME WALLS SHALL BE CONSTRUCTED WITH ANCHORS, TOP AND BOTTOM OF EACH STUD, PER CODE.
- ALL WORK SHALL BE ERECTED AND INSTALLED PLUMB, LEVEL, SQUARE AND TRUE, AND IN PROPER ALIGNMENT.
- ANY ITEM SCHEDULED TO BE REUSED MUST BE REFURBISHED AND MAINTAINED TO A "LIKE NEW" CONDITION, NO EXCEPTIONS.
- ALL FLOOR PENETRATIONS MUST BE SEALED WITH A 2 HOUR RATING.
- ALL PENETRATIONS INTO OR THROUGH FIRE WALLS, FIRE BARRIERS, SMOKE BARRIER WALLS, AND FIRE PENETRATIONS SHALL COMPLY WITH APPLICABLE BUILDING CODES.

PERMIT NOTES

- ALTERATION OF THE AUTOMATIC FIRE SPRINKLER SYSTEM IS REQUIRED, UNDER SEPARATE PERMIT.
- ALTERATION OF THE FIRE ALARM SYSTEM IS REQUIRED, UNDER SEPARATE PERMIT.

FLOOR PLAN NOTES

- ALL DIMENSIONS MARKED CLEAR OR CLR SHALL BE MAINTAINED AND SHALL ALLOW FOR THICKNESS OF ALL WALL FINISHES, UNLESS OTHERWISE NOTED.
- ALL CONCEALED LUMBER AND BLOCKING TO BE FIRE TREATED. SILL COVER TO SUPPORT MINIMUM LIVE LOAD OF 80 PSF.
- ALL WOOD NOT CALLED OUT SHALL BE PRESSURE TREATED FIRE RATED OR FIRE RETARDANT TREATED WOOD.

CONCRETE

- ALL CONCRETE SHALL HAVE SAND AND GRAVEL AGGREGATE, TYPE I PORTLAND CEMENT, AND SHALL HAVE A COMPRESSIVE STRENGTH OF 3,000 PSI AT 28 DAYS.
- MINIMUM CEMENT RATIO TO BE 6 SACKS PER CUBIC MAXIMUM WATER CEMENT RATIO TO BE 0.50.
- ALL CONCRETE REINFORCEMENT BARS SHALL CONFORM TO ASTM A615, GRADE 60.
- ALL WELDED WIRE FABRIC SHALL CONFORM TO ASTM 185.
- DETAILING, FABRICATION AND PLACING OF CONCRETE REINFORCEMENT AND ACCESSORIES SHALL BE IN ACCORDANCE WITH ACI 308-11, LATEST EDITION.
- ALL WETWORK, TRANSPORTING, PLACING AND CURING OF CONCRETE SHALL BE DONE IN ACCORDANCE WITH THE RECOMMENDATION OF THE LATEST EDITIONS OF THE AMERICAN CONCRETE INSTITUTE ACI 318, ACI 301, ACI 309, ACI 305 AND ACI 308. MAXIMUM FALL FOR CONCRETE SHALL BE 2:0.
- ALL CONCRETE SHALL BE CONSOLIDATED BY VIBRATION, SPAULDING OR RODDING, SO THAT THE CONCRETE IS FREE OF AIR ENTRIES AND THE REINFORCEMENT IS FULLY EMBEDDED. ITEMS AND INTO CORNERS OF FORMS, ELIMINATING ALL AIR OR STONE POCKETS WHICH MIGHT CAUSE HONEYCOMBING. CARE SHALL BE TAKEN NOT TO OVER VIBRATE AND CAUSE SEGREGATION.

METAL STUDS / DRYWALL

- GYPSUM BOARD JOINTS SHALL BE STAGGERED AS REQUIRED BY GOVERNING BUILDING CODES.
- PROVIDE WATER RESISTANT GYPSUM BOARDS AROUND RESTROOM FIXTURES.
- ALL BACKING/CLADDING SHALL CONSIST OF 18 GAUGE METAL FRAMING AND/OR 2\"/>

CABINETS

- ALL EXPOSED CABINET ENDS SHALL HAVE FINISH PANELS. GENERAL CONTRACTOR SHALL COORDINATE LOCATION OF ALL CABINET FILLERS, FALSE PANELS, MISC. COMPONENTS FOR CABINETRY AND MILLWORK & COUNTER TOP PENETRATIONS REQUIRED BY EQUIPMENT.
- ALL COUNTERTOP / WALL INTERSECTIONS SHALL HAVE A 4\"/>

FINISH PLAN NOTES

- ALL INTERIOR WALLS SHALL BE FINISHED PER SCHEDULE. IF NO INDICATION PROVIDED, THE SURFACE SHALL BE PAINTED WITH A PAINT SPECIFICATION BEING USED PREVIOUSLY ON THIS PROJECT.
- ALL INTERIOR PARTITIONS SHALL RECEIVE ONE PRIMER & TWO FINISH COATS.
- ALL HORIZONTAL GYPSUM BOARD SURFACES SHALL BE PRIMED WITH TINTED PRIMER TO COINCIDE WITH FINISH PAINT COLOR. ALL LEFT OVER PAINT SHALL BE CLEARLY LABELED AND APPROPRIATELY PACKAGED. CONTRACTOR SHALL DELIVER ALL LEFT OVER PAINT AND FINISH MATERIALS TO TENANT FOR STORAGE.
- FLOOR FINISHES ON BOTH SIDES OF A DOOR SHALL BE LEVEL FOR A DISTANCE EQUAL TO 6\"/>

DOOR NOTES

- TRIM THE BOTTOM OF DOORS TO CLEAR THE TOP OF ALL FINISHED FLOORS. AS APPLICABLE BY 1/4\"/>

REVOLUTION

ISSUE DATE: 11/01/23
PROJECT #: 372K.1358K
DRAWN BY: DR
CHECKED BY: SL/JBC

GENERAL NOTES

CS-2

ACCESSIBILITY KEYNOTES

- CLEARANCE FOR URINAL: 30\"/>
- CLEARANCE FOR WATER CLOSET: 80\"/>
- CLEARANCE FOR SINK: 30\"/>
- T-SHAPED WHEELCHAIR TURNING SPACE. SEE DETAIL 18CS-3.1
- CIRCULAR WHEELCHAIR TURNING SPACE. SEE DETAIL 18CS-3.1
- DOOR CLEARANCE: FRONT APPROACH, PULL SIDE. SEE DETAIL 8CS-3.1
- DOOR CLEARANCE: FRONT APPROACH, PUSH SIDE. SEE DETAIL 11CS-3.1
- DOOR CLEARANCE: FRONT APPROACH, PUSH SIDE, NO LATCH OR CLOSER. SEE DETAIL 8CS-3.1
- DOOR CLEARANCE: HINGE APPROACH, PULL SIDE. SEE DETAIL 8CS-3.1
- DOOR CLEARANCE: HINGE APPROACH, PULL SIDE. SEE DETAIL 10CS-3.1
- DOOR CLEARANCE: HINGE APPROACH, PUSH SIDE. SEE DETAIL 11CS-3.1
- DOOR CLEARANCE: HINGE APPROACH, PUSH SIDE W/CLOSER & LATCH. SEE DETAIL 12CS-3.1
- DOOR CLEARANCE: LATCH APPROACH, PULL SIDE. SEE DETAIL 18CS-3.1
- DOOR CLEARANCE: LATCH APPROACH, PUSH SIDE. SEE DETAIL 15CS-3.1
- DOOR CLEARANCE: LATCH APPROACH, PUSH SIDE W/CLOSER. SEE DETAIL 16CS-3.1
- DOOR CLEARANCE: LATCH APPROACH, PUSH SIDE. SEE DETAIL 15CS-3.1
- ACCESSIBLE PORTION OF SERVICE COUNTER. SEE DETAIL 31CS-3.1
- ACCESSIBLE RESTROOM: ALL EQUIPMENT SHALL COMPLY WITH ACCESSIBILITY REQUIREMENTS SET ON 2 & 18CS-3.1. SEE EQUIPMENT SCHEDULE AND PLUMBING PLANS.
- LOCATION OF RESTROOM ACCESSIBLE SIGNAGE. SEE 3CS-3.1 FOR DETAILS.
- ACCESSIBLE DRINKING FOUNTAIN. SEE 18CS-3.1 FOR DETAILS.
- DOOR CLEARANCE: FRONT APPROACH. SEE DETAIL 20CS-3.1
- DOOR CLEARANCE: HINGE APPROACH. SEE DETAIL 21CS-3.1
- ACCESS LIMITED JUST FOR EMPLOYEES. NO PUBLIC ACCESS.

GENERAL NOTES

- PROJECT HAS A FULLY ACCESSIBLE MAIN ENTRY AT GROUND LEVEL.
- THE PROVIDED ACCESSIBILITY ROUTE OF 36\"/>
- THE PUBLIC AREAS OF THE STORE, EXCEPT FOR SEGMENTS 24\"/>
- AT LEAST 5 PERCENT OF THE SEATING, BUT NOT LESS THAN ONE SEAT, SHALL BE ACCESSIBLE.
- FACETS SHALL BE EASILY OPERATED; PUSH TYPE, OR ELECTRICALLY CONTROLLED MECHANISMS. SELF-CLOSING VALVES SHALL REMAIN OPEN FOR AT LEAST 10 SECONDS.
- HOT WATER AND DRAIN PIPES UNDER THE LAVATORY SHALL BE INSULATED OR CONFIGURED TO PROTECT AGAINST CONTACT. THERE SHALL BE NO SHARP OR ABRASIVE SURFACES UNDER LAVATORY.
- MAX. HEIGHT FOR ALL COUNTERS SHALL BE 34\"/>

ACCESSIBILITY PLAN SCALE: 1/4\"/>

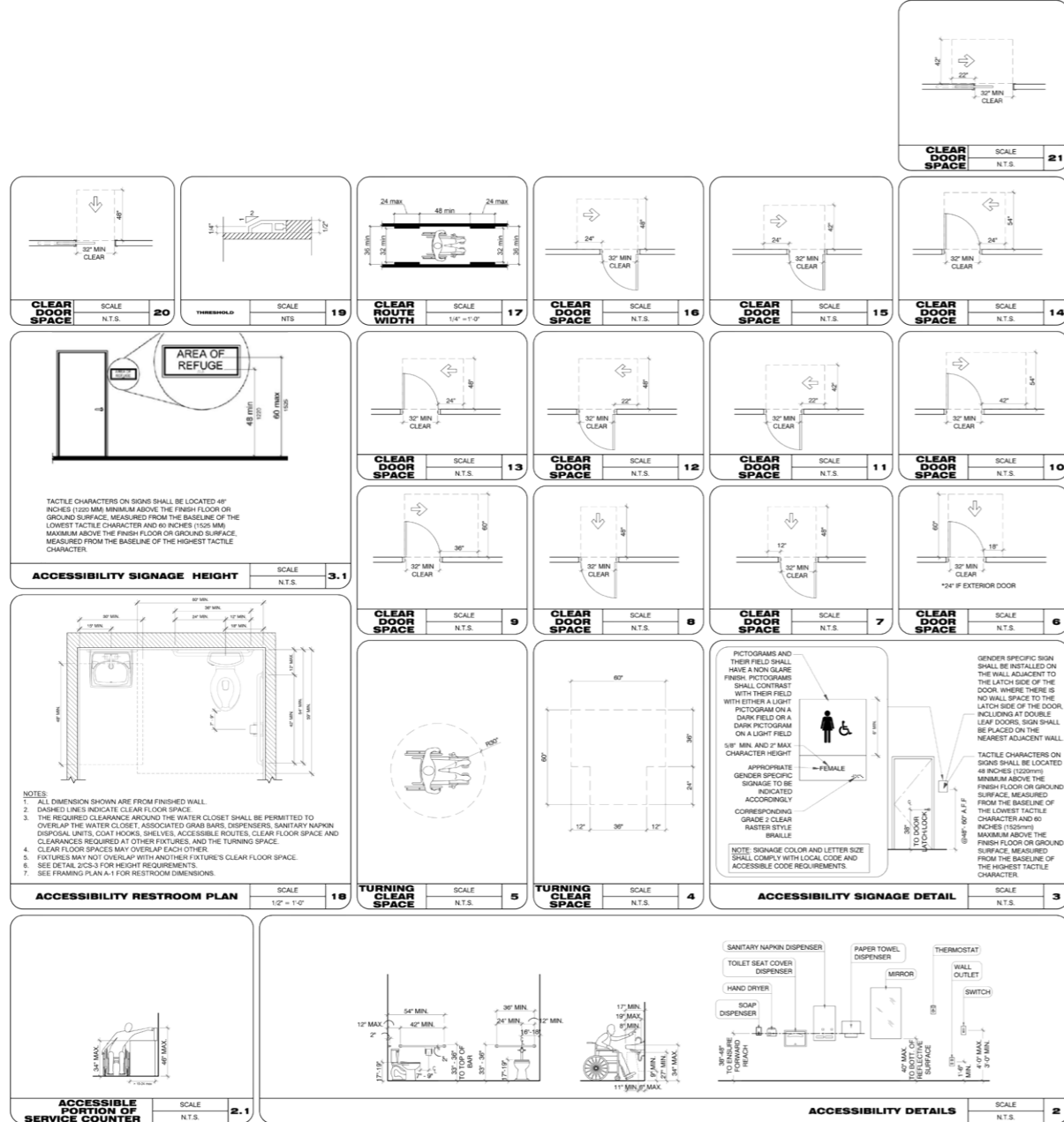
CS-3

REVOLUTION

ISSUE DATE: 11/01/23
PROJECT #: 372K.1358K
DRAWN BY: DR
CHECKED BY: SL/JBC

ACCESSIBILITY PLAN

CS-3



REVISIONS:

NO.	DESCRIPTION	DATE

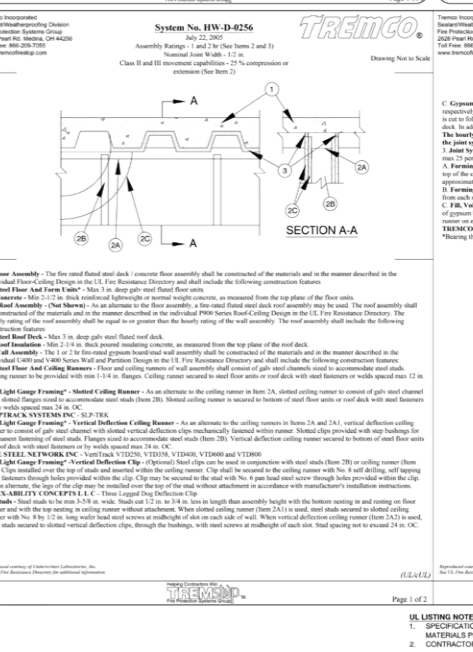
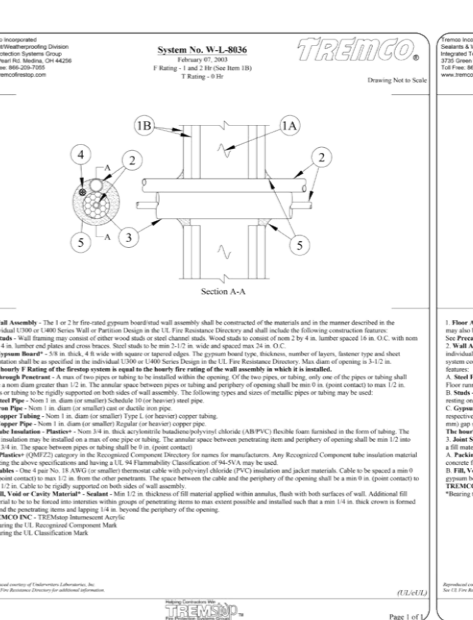
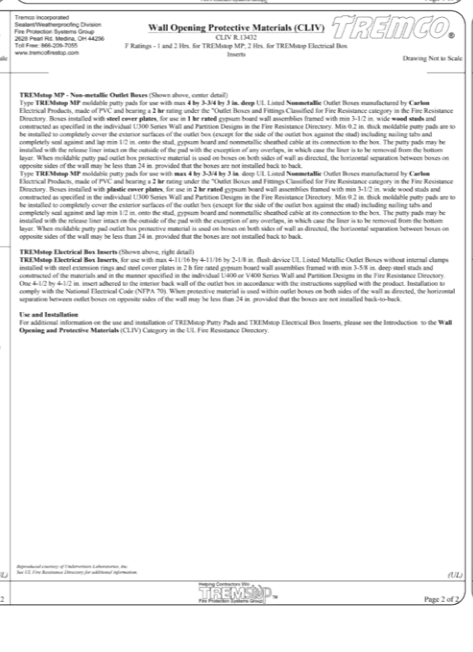
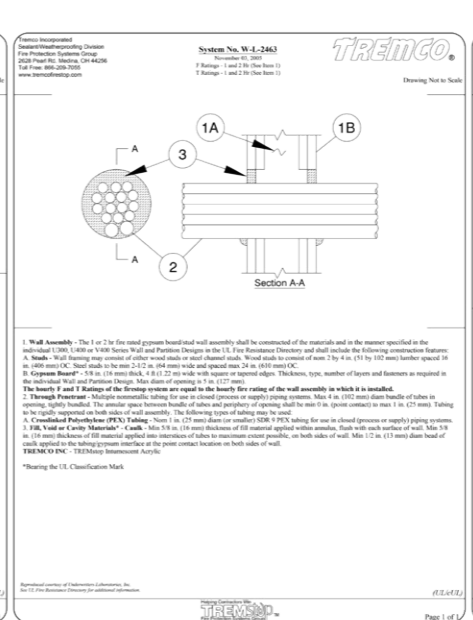
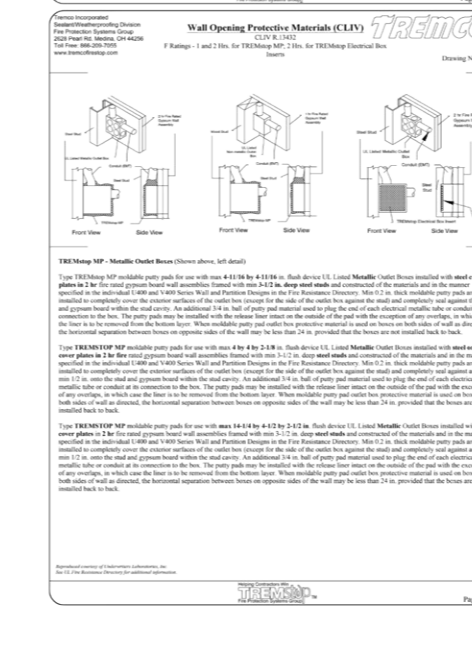
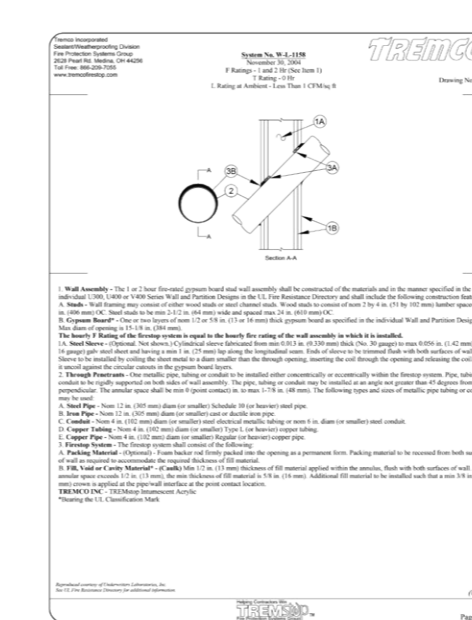
REVISIONS DATES:

--	--

ISSUE DATE: 11/01/23
PROJECT #: 372K.1358K
DRAWN BY: DR
CHECKED BY: SL/BC

ACCESSIBILITY DETAILS

CS-3.1



UL LISTINGS NOTES:

- SPECIFICATIONS AND INFORMATION IN THIS SHEET ARE FOR CONTRACTOR INFORMATION ONLY. INFORMATION ARE TAKEN FROM MATERIALS PUBLISHED BY TREMCO AND A LAMM GROUP. TREMCO AND A LAMM GROUP ARE RESPONSIBLE FOR THEIR CORRECT AND FOR THE CONTENT.
- CONTRACTOR SHALL BE RESPONSIBLE FOR COMPLYING WITH THE MOST CURRENT VERSION OF ALL LISTED UL SPECIFICATIONS.

UL LISTINGS

CS-4

DESIGN CERTIFICATIONS & SEALS

**Design No. U419
BXUV U419
Fire Resistance Ratings - ANSI/UL 263**

Design System/Construction/Assembly Usage Disclaimer

**BXUV - Fire Resistance Ratings - ANSI/UL 263
BXUV7 - Fire Resistance Ratings - CAN/ULC-S101 Certified for Canada**

Design No. U419

DESIGN CERTIFICATIONS & SEALS

**Design No. U419
BXUV U419
Fire Resistance Ratings - ANSI/UL 263**

DESIGN CERTIFICATIONS & SEALS

**Design No. U419
BXUV U419
Fire Resistance Ratings - ANSI/UL 263**

DESIGN CERTIFICATIONS & SEALS

**Design No. U419
BXUV U419
Fire Resistance Ratings - ANSI/UL 263**

DESIGN CERTIFICATIONS & SEALS

**Design No. U419
BXUV U419
Fire Resistance Ratings - ANSI/UL 263**

DESIGN CERTIFICATIONS & SEALS

**Design No. U419
BXUV U419
Fire Resistance Ratings - ANSI/UL 263**

DESIGN CERTIFICATIONS & SEALS

**Design No. U419
BXUV U419
Fire Resistance Ratings - ANSI/UL 263**

TABLE 1 - Fire Resistance Ratings - ANSI/UL 263

Rating	Trade Name	Manufacturer	Height of Assembly
1	1.150	1.150	1.150
	1.150	1.150	1.150
	1.150	1.150	1.150
	1.150	1.150	1.150
2	1.150	1.150	1.150
	1.150	1.150	1.150
	1.150	1.150	1.150
	1.150	1.150	1.150
3	1.150	1.150	1.150
	1.150	1.150	1.150
	1.150	1.150	1.150
	1.150	1.150	1.150
4	1.150	1.150	1.150
	1.150	1.150	1.150
	1.150	1.150	1.150
	1.150	1.150	1.150

TABLE 2 - Fire Resistance Ratings - ANSI/UL 263

Rating	Trade Name	Manufacturer	Height of Assembly
1	1.150	1.150	1.150
	1.150	1.150	1.150
	1.150	1.150	1.150
	1.150	1.150	1.150
2	1.150	1.150	1.150
	1.150	1.150	1.150
	1.150	1.150	1.150
	1.150	1.150	1.150
3	1.150	1.150	1.150
	1.150	1.150	1.150
	1.150	1.150	1.150
	1.150	1.150	1.150
4	1.150	1.150	1.150
	1.150	1.150	1.150
	1.150	1.150	1.150
	1.150	1.150	1.150

TABLE 3 - Fire Resistance Ratings - ANSI/UL 263

Rating	Trade Name	Manufacturer	Height of Assembly
1	1.150	1.150	1.150
	1.150	1.150	1.150
	1.150	1.150	1.150
	1.150	1.150	1.150
2	1.150	1.150	1.150
	1.150	1.150	1.150
	1.150	1.150	1.150
	1.150	1.150	1.150
3	1.150	1.150	1.150
	1.150	1.150	1.150
	1.150	1.150	1.150
	1.150	1.150	1.150
4	1.150	1.150	1.150
	1.150	1.150	1.150
	1.150	1.150	1.150
	1.150	1.150	1.150

TABLE 4 - Fire Resistance Ratings - ANSI/UL 263

Rating	Trade Name	Manufacturer	Height of Assembly
1	1.150	1.150	1.150
	1.150	1.150	1.150
	1.150	1.150	1.150
	1.150	1.150	1.150
2	1.150	1.150	1.150
	1.150	1.150	1.150
	1.150	1.150	1.150
	1.150	1.150	1.150
3	1.150	1.150	1.150
	1.150	1.150	1.150
	1.150	1.150	1.150
	1.150	1.150	1.150
4	1.150	1.150	1.150
	1.150	1.150	1.150
	1.150	1.150	1.150
	1.150	1.150	1.150

TABLE 5 - Fire Resistance Ratings - ANSI/UL 263

Rating	Trade Name	Manufacturer	Height of Assembly
1	1.150	1.150	1.150
	1.150	1.150	1.150
	1.150	1.150	1.150
	1.150	1.150	1.150
2	1.150	1.150	1.150
	1.150	1.150	1.150
	1.150	1.150	1.150
	1.150	1.150	1.150
3	1.150	1.150	1.150
	1.150	1.150	1.150
	1.150	1.150	1.150
	1.150	1.150	1.150
4	1.150	1.150	1.150
	1.150	1.150	1.150
	1.150	1.150	1.150
	1.150	1.150	1.150

6. LISTING NOTES:

- SPECIFICATIONS AND INFORMATION IN THIS SHEET ARE FOR CONTRACTOR INFORMATION ONLY. INFORMATION IS TAKEN FROM MATERIAL PUBLISHED BY THE MANUFACTURER AND IS SUBJECT TO CHANGE WITHOUT NOTICE.
- RECOMMENDED ELEMENTS HAVE BEEN INDICATED, HOWEVER CONTRACTOR SHALL BE RESPONSIBLE FOR COMPLYING WITH THE MOST CURRENT VERSION OF ALL LISTED UL SPECIFICATIONS.

REVISIONS

No.	Description	Date
1	Issue	11/01/21

UL LISTINGS

CS-4.1

REVISIONS

No.	Description	Date
1	Issue	11/01/21

UL LISTINGS

CS-4.1

6. LISTING NOTES:

- SPECIFICATIONS AND INFORMATION IN THIS SHEET ARE FOR CONTRACTOR INFORMATION ONLY. INFORMATION IS TAKEN FROM MATERIAL PUBLISHED BY THE MANUFACTURER AND IS SUBJECT TO CHANGE WITHOUT NOTICE.
- RECOMMENDED ELEMENTS HAVE BEEN INDICATED, HOWEVER CONTRACTOR SHALL BE RESPONSIBLE FOR COMPLYING WITH THE MOST CURRENT VERSION OF ALL LISTED UL SPECIFICATIONS.

LIFE SAFETY NOTES

- CONTRACTOR TO FIELD VERIFY THE PRESENCE OF A DUCT SMOKE DETECTOR & THAT IT IS IN COMPLIANCE WITH CURRENT LOCAL MECHANICAL CODE.
- REQUIRED "PRELIMINARY SMOKE / LIFE SAFETY SYSTEM TEST" TO COORDINATE EXECUTION WITH MECHANICAL, LIFE SAFETY & ARCHITECT PRIOR TO CONTACTING AND SCHEDULING FINAL SMOKE TEST WITH THE CITY.
- EXIT ACCESS SHALL BE PERMITTED TO PASS THROUGH STOREROOMS PROVIDED THAT THE FOLLOWING CONDITIONS ARE MET:
 - NOT MORE THAN 50 PERCENT OF EXIT ACCESS SHALL BE PROVIDED THROUGH THE STOREROOM.
 - THE STOREROOM SHALL NOT BE SUBJECT TO LOCKING.
 - THE MAIN AISLE THROUGH THE STOREROOM SHALL NOT BE LESS THAN 48" (1130) WIDE.
 - THE PATH OF TRAVEL THROUGH THE STOREROOM, DEFINED WITH FIRE BARRIERS, SHALL BE DIRECT AND CONTINUOUSLY MAINTAINED IN AN UNRESTRICTED CONDITION.
- PROVIDE (1) TYPE ABC FIRE EXTINGUISHERS FOR EACH 2,500 S.F. AND NOT MORE THAN 75 FEET APART.
- FIRE EXTINGUISHERS SHALL BE PLACED BY ALL EXIT DOORS AND SHALL BE VISIBLE AND ACCESSIBLE AT ALL TIMES DURING REMODELING.
- ALL EXIT WAYS SHALL BE KEPT FREE AND CLEAR FOR EXITING AND ENERGING PURPOSES.

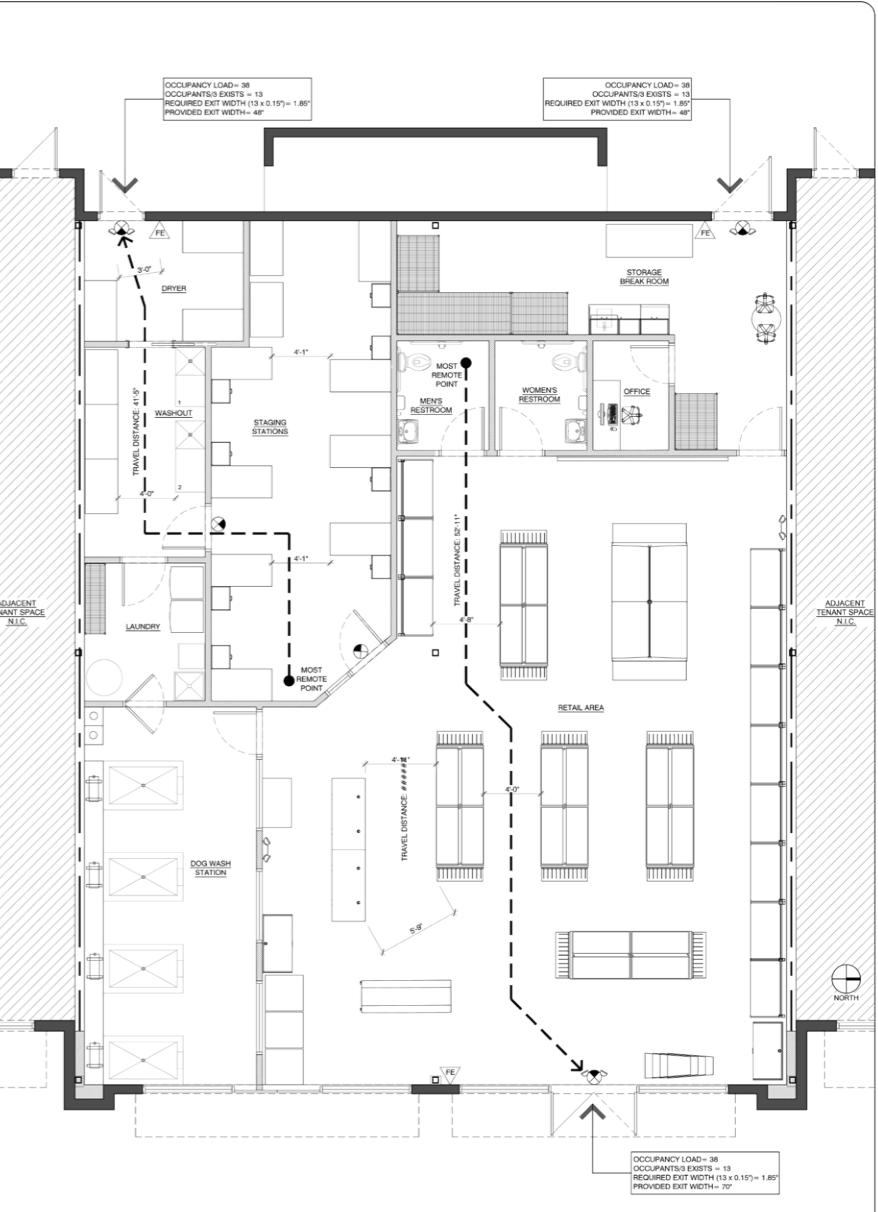
FIXTURE LEGEND

SYMBOL	DESCRIPTION - SEE ELECTRICAL PLANS FOR DETAILS
(S)	WALL MOUNTED EMERGENCY LIGHTS
(D)	WALL MOUNTED DIRECTIONAL EXIT SIGN
(E)	WALL MOUNTED EXIT SIGN/EMERGENCY LIGHT COMBO
(E)	EXISTING FIXTURE SHALL REMAIN

EGRESS DOOR REQUIREMENTS

ALL EGRESS DOORS, NEW OR EXISTING, SHALL COMPLY WITH NFPA 101 SECTION 7.2, AND THE FOLLOWING REQUIREMENTS:

- MINIMUM CLEAR WIDTH WHEN OPEN 90 DEGREES SHALL BE 30"
- THE ELEVATION OF THE FLOOR SURFACES ON BOTH SIDES OF THE DOOR SHALL NOT VARY BY MORE THAN 1/2" (12.7) THE ELEVATION DIFFERENCE FOR A MIN. DISTANCE EQUAL TO THE WIDTH OF THE LEAF.
- THE OPENING FORCE APPLIED TO THE LATCH STEEL TO FULLY OPEN THE DOORS OUTSIDE MAY BE ONE STEP LOWER THAN THAT OF THE INSIDE IF MAX.
- THE OPENING FORCE APPLIED TO THE LATCH STEEL TO FULLY OPEN THE DOOR SHALL NOT EXCEED 15 LBF TO RELEASE THE LATCH, 30 LBF TO SET THE DOOR IN MOTION AND 15 LBF TO OPEN THE DOOR TO THE REQUIRED WIDTH.
- THE OPENING FORCE TO FULLY OPEN AN EXISTING DOOR IN AN EXISTING BUILDING SHALL NOT EXCEED 30 LBF.
- DOOR SHALL BE ARRANGED TO BE OPENED READILY FROM THE EGRESS SIDE WHENEVER THE BUILDING IS OCCUPIED. LOCKS SHALL NOT REQUIRE THE USE OF A KEY, TOOL, EFFORT OR SPECIAL KNOWLEDGE FOR OPERATION ON THE EGRESS SIDE.
- ALL LOCKS ON EGRESS DOORS, NEW OR EXISTING, SHALL COMPLY WITH NFPA 1 SECTION 7.1.5.3. AND THE FOLLOWING REQUIREMENTS:
 - DOOR LEAVES SHALL BE ARRANGED TO BE OPENED READILY FROM THE EGRESS SIDE WHENEVER THE BUILDING IS OCCUPIED.
 - LOCKS, IF PROVIDED, SHALL NOT REQUIRE THE USE OF A KEY, A TOOL, OR SPECIAL KNOWLEDGE OR EFFORT FOR OPERATION FROM THE EGRESS SIDE.
 - A LATCH OR OTHER FASTENING DEVICE ON A DOOR LEAF SHALL BE PROVIDED WITH A RELEASE DEVICE THAT HAS AN OBVIOUS METHOD OF OPERATION AND THAT IS READILY OPERATED UNDER ALL LIGHTING CONDITIONS.



LIFE SAFETY PLAN SCALE 1/4" = 1'-0" 1

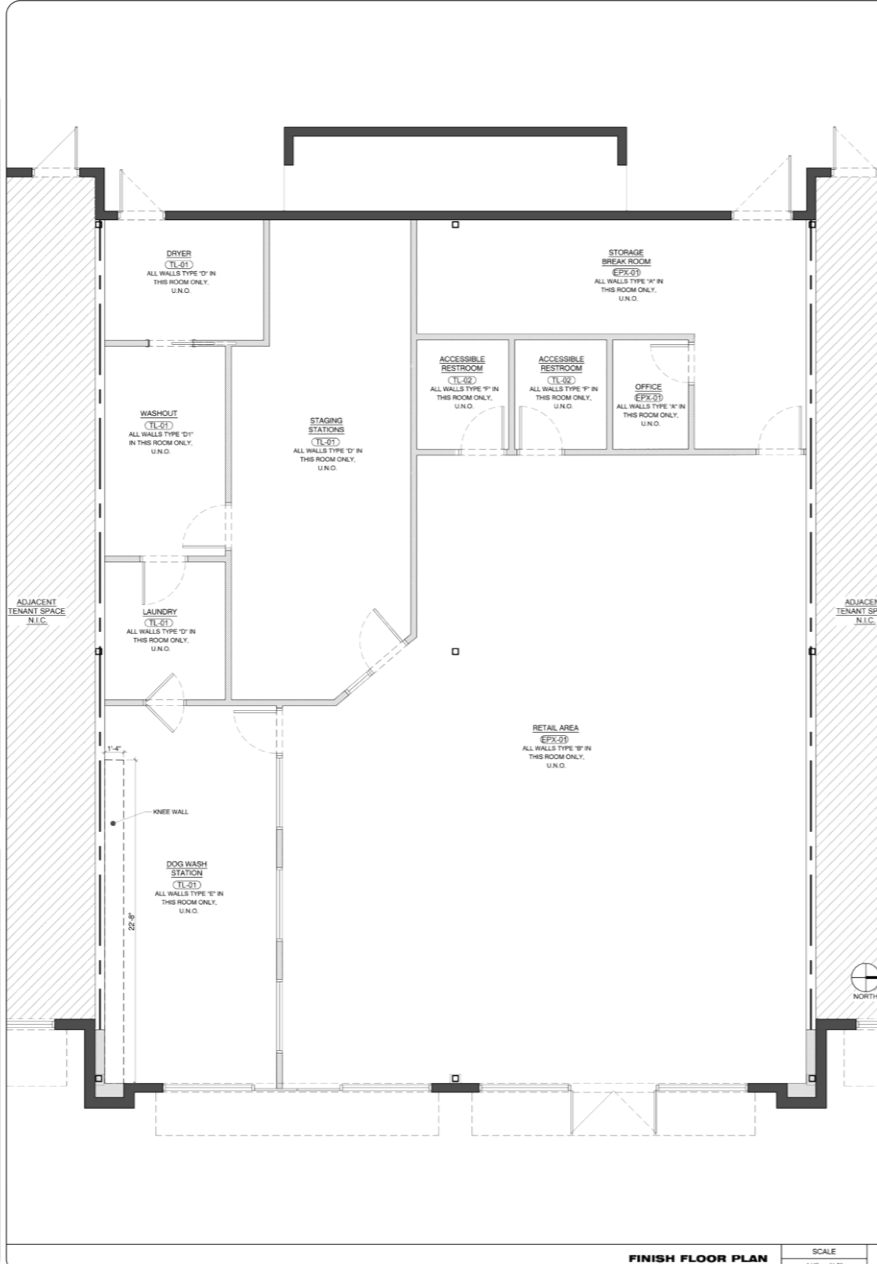
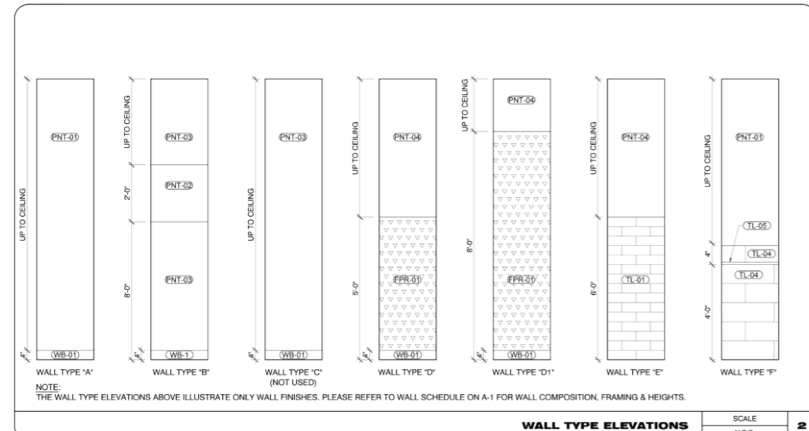
GRAPHICS SCHEDULE		
CODE	DESCRIPTION	SPECIFICATION
WG-01	WALL ACCENT BAND	MANUFACTURER: MAIZE 360 NOTE: LAY OUT PER STORE DESIGN

TRIM AND GROUT SCHEDULE		
CODE	DESCRIPTION	SPECIFICATION
GR-01	GROUT	MANUFACTURER: THE TILE SHOP MODEL: SUPERIOR PRO-GROUT EXCEL COLOR: NATURAL
GR-02	GROUT	MANUFACTURER: THE TILE SHOP MODEL: SUPERIOR PRO-GROUT EXCEL COLOR: UNSAILED WHITE
SS-01	STAINLESS STEEL (TRANSITION)	MANUFACTURER: SCHULTER SYSTEMS MODEL: ZERO EDGE PROTECTION PROFILE COLOR: STAINLESS STEEL NOTE: ALL TILE ABUTTING CONCRETE.

FLOOR/ BASE SCHEDULE		
CODE	DESCRIPTION	SPECIFICATION
WB-01	WALL BASE	MANUFACTURER: TARNETT MODEL: 4" TRADITIONAL DURACOVE RUBBER COLOR: MOONROCK (29)
TL-01	CERAMIC TILE	MANUFACTURER: THE TILE SHOP MODEL: CLAY SERIES (88086) COLOR: GREY (MATTE) SIZE: 12" x 24"
TL-02	CERAMIC TILE	MANUFACTURER: THE TILE SHOP MODEL: ONIX STEEL PORCELAIN (88134) COLOR: STEEL (MATTE) SIZE: 12" x 24"
EPX-01	EPOXY FLOOR	MANUFACTURER: TENNANT COLOR: ECO-FITS URETHANE EQUAL PART MIX. + PIGMENT P100 (WHALE) + PIGMENT P100 (DOLPHIN) EPOXY FOR BASE COATS PRODUCT SPECIFIED ABOVE AND MUST BE VERIFIED WITH THE OWNER PRIOR TO INSTALLATION

WALL FINISH SCHEDULE		
CODE	DESCRIPTION	SPECIFICATION
PNT-01	PAINT	SHERWIN WILLIAMS COLOR: (SW9601) BUTTERCUP FINISH: EGGSHELL
PNT-02	PAINT	SHERWIN WILLIAMS COLOR: (SW9719) OVERT GREEN FINISH: EGGSHELL NOTE: RETAIL BAND FROM 96" A.F.F. TO 120" A.F.F.
PNT-03	PAINT	SHERWIN WILLIAMS COLOR: (SW9911) PAPAIA FINISH: EGGSHELL
PNT-04	PAINT	SHERWIN WILLIAMS COLOR: (SW9171) FELTED WOOL
FPR-01	FIBERGLASS REINFORCED PLASTIC	MANUFACTURER: GLASNER MODEL: FIP 100 COLOR: GREY NOTE: INSTALL HORIZONTALLY TO 4" A.F.F.
TL-04	CERAMIC TILE	MANUFACTURER: THE TILE SHOP MODEL: (84250) COLOR: MATTE GREY FINISH: GLOSS SIZE: 8" x 24" NOTE: INSTALL FROM FLOOR TO 4" A.F.F. WITH ACCENT BAND BELOW TOP TILE
TL-05	MOSAIC TILE	MANUFACTURER: THE TILE SHOP MODEL: (86981) SHANI BLACK COLOR: BLACK FLAMED FINISH: GRANITE SIZE: 2" x 2" NOTE: SET BENEATH TOP TILE RESTROOM WALLS. CUT DOWN TO TWO MOSAIC TILES AND SET ONE FINAL MATTA GREY TILE IN PATTERN ABOVE 1/2" GROUT LINE
TL-06	CERAMIC TILE	MANUFACTURER: THE TILE SHOP MODEL: (81837) COLOR: GLASS ROYAL BLUE AMALFI MOSAIC FINISH: GLOSS SIZE: 2" x 4" NOTE: SET ON ALL TUB WALLS IN WASH TUBS

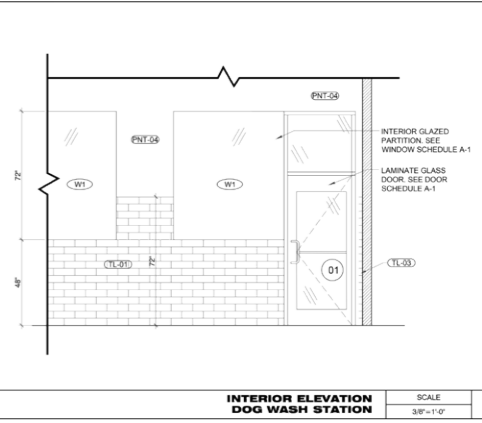
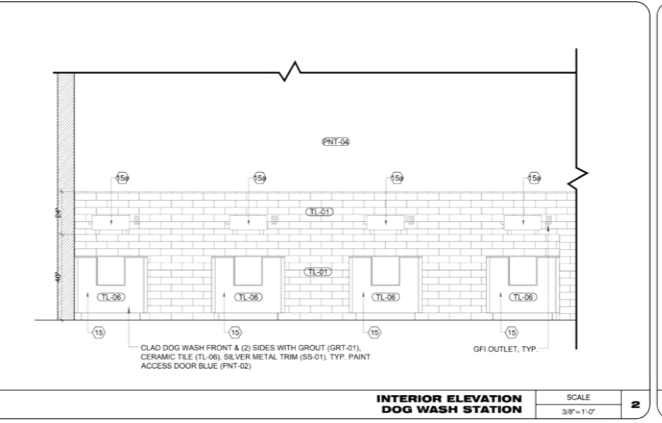
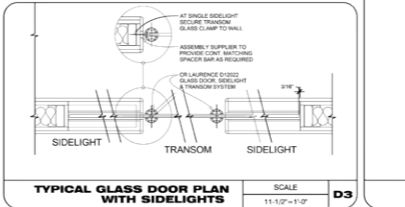
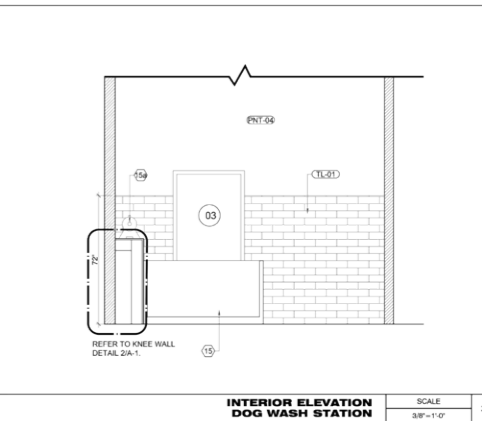
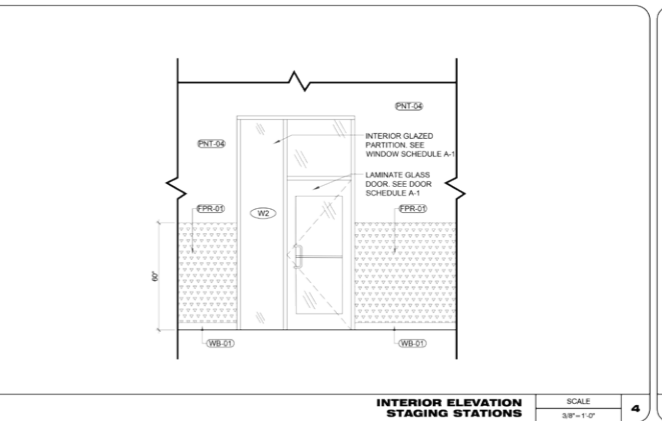
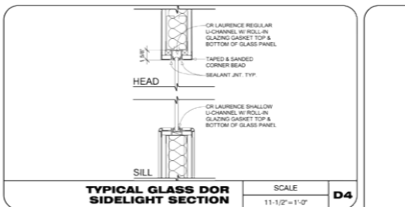
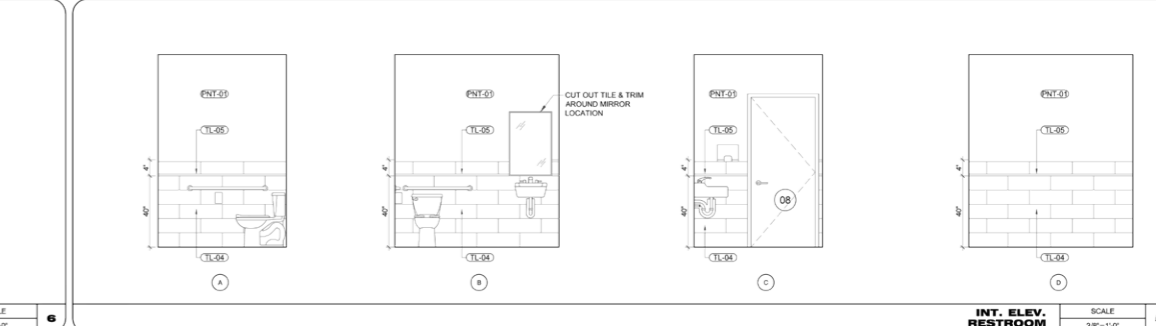
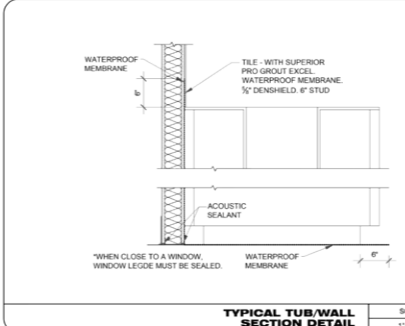
NOTE: APPLY PRIMER AND THEN TWO COATS OF PAINT.
NOTE: USE DENSHIELD TILE BACKER TO BE INSTALLED 4" AFF FOR ALL TILE WALLS.
NOTE: SCHULTER TRIM A. SCHULTER TRIM AT ALL TOP EDGES OF TILE (BATHROOM AND DOG WASH). B. INSIDE AND OUTSIDE CORNER AND EDGES.
VENDOR: THE TILE SHOP
CONTACT: BEN CRICKENBERGER
PH: (817) 383-9177
EMAIL: BEN.CRICKENBERGER@TILESHOP.COM



REVOLUTION
3232 FM 1430 WEST SUITE 300
KATY, TEXAS 77459

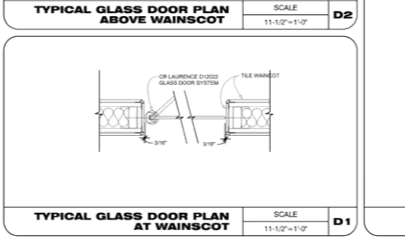
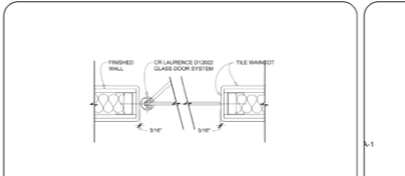
ISSUE DATE: 11/01/23
PROJECT #: 372K-1358K
DRAWN BY: DR
CHECKED BY: SL/BC

FINISH PLAN
A-3



INTERIOR GLAZED WALL GENERAL NOTES

- MANUFACTURER: OLD CASTLE BUILDING ENVELOPE OR LAURENCE CO.
- MODEL: OR LAURENCE D1002 DOOR TRANSOM AND SIDELIGHT SYSTEM OR LAURENCE REGULAR U-CHANNEL AT TOP AND SHALLOW U-CHANNEL AT BOTTOM W/ ROLL-IN GLAZING GASKET.
- COLOR: 1/2" THICK CLEAR GLASS
- LOCATION: SEPARATES VESTIBULE FROM RETAIL, VESTIBULE FROM SELF WASH, RETAIL FROM SELF WASH, RETAIL FROM STAGING.
- FURNISHED AND INSTALLED BY GC
- EACH GLASS PARTITION A SIDELIGHT AND TRANSOM CONFIGURED RELATIVE TO DOOR HEIGHT. TRANSOM TOP HEIGHT AT 10'-0" A.F.F. REFER TO DOOR SCHEDULE FOR SPECIFICATIONS.



REVOLUTION
3232 FM 1430 WEST SUITE 300
KATY, TEXAS 77459

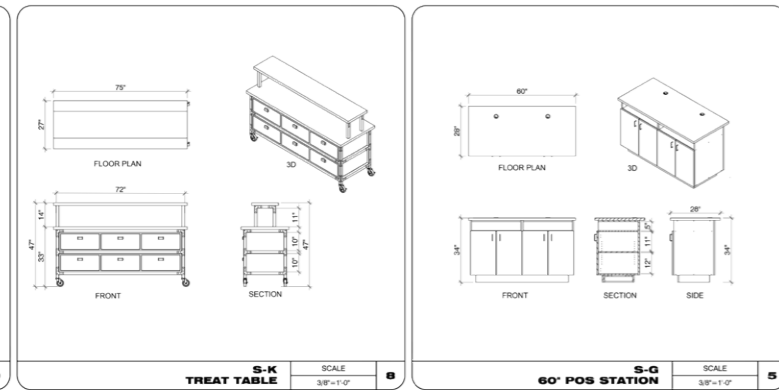
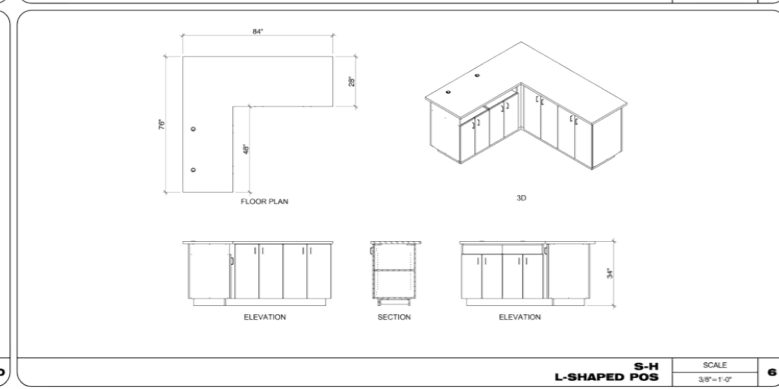
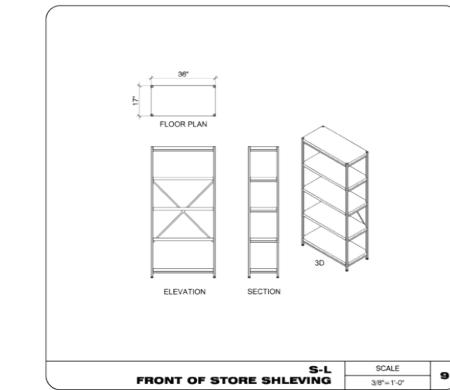
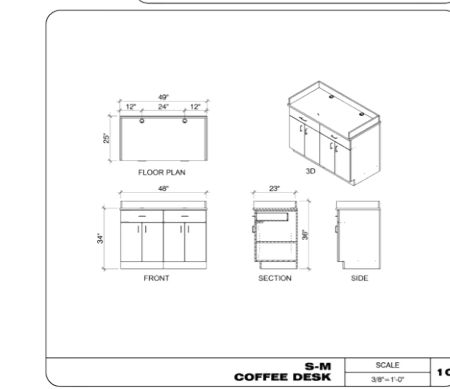
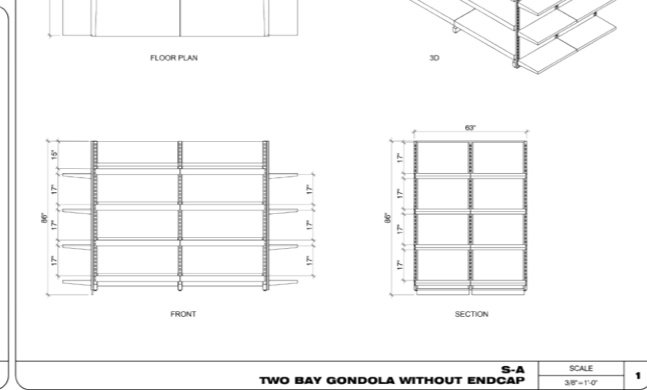
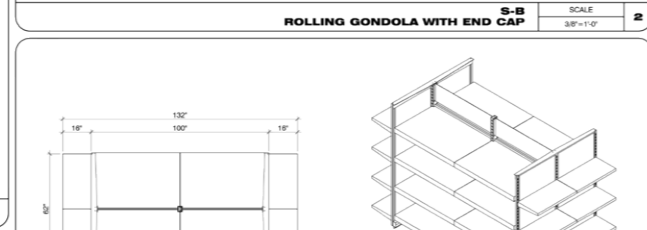
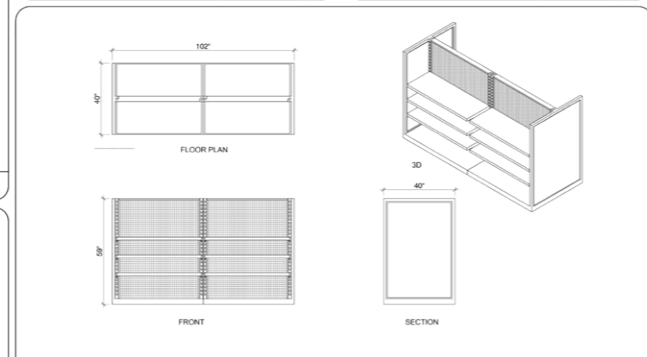
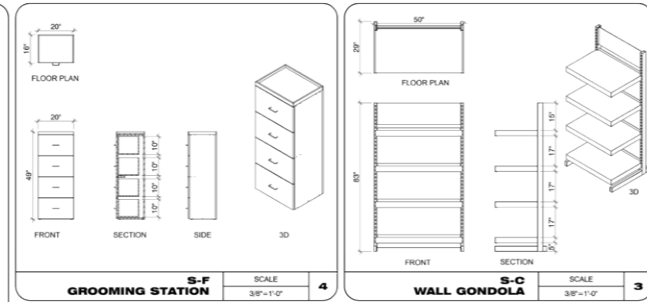
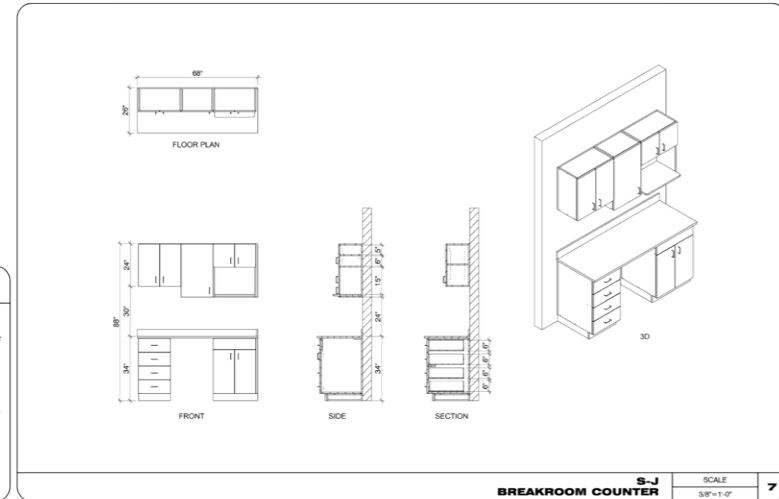
ISSUE DATE: 11/01/23
PROJECT #: 372K-1358K
DRAWN BY: DR
CHECKED BY: SL/BC

INTERIOR ELEVATIONS
A-4

MILLWORK NOTES

- A) THESE DRAWINGS ARE INTENDED FOR DIAGNOSTIC PURPOSES ONLY. IMPERIAL WIRE AND DISPLAY SHALL COORDINATE ACTUAL PENETRATION REQUIREMENTS WITH PURCHASED EQUIPMENT & VERIFY ALL CONDITIONS IN FIELD. IMPERIAL WIRE AND DISPLAY SHALL SUBMIT SHOP DRAWINGS FOR TENANT APPROVAL PRIOR TO CONSTRUCTION.
- B) ALL FINISHES & HARDWARE SHALL BE SELECTED BY TENANT.
- C) ALL MILLWORK SHALL COMPLY WITH THE ACCESSIBILITY REQUIREMENTS LISTED ON CDS.
- D) ALL MILLWORK AND SHELVES MUST BE WASHABLE AND IMPERVIOUS. INTERIORS OF CABINETS, INCLUDING SHELVES MUST BE OF A WASHABLE AND IMPERVIOUS FINISH.
- F) IMPERIAL WIRE AND DISPLAY SHALL COORDINATE COUNTER TOP PENETRATIONS WITH EQUIPMENT SPECIFICATIONS.

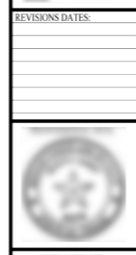
IMPERIAL WIRE AND DISPLAY
 CONTACT: TONY BRIDGEMAN
 E-MAIL: TONYB@WGPPLAY.COM
 ADDRESS: 2106 COMMERCE BLVD. ROGERS, MN 55374
 PH: 612-697-7221



ISSUE DATE: 11/01/23
 PROJECT #: 372K-1358K
 DRAWN BY: DR
 CHECKED BY: SL/BC

REVISIONS DATES:

REVOLUTION
 1200 FM 1402 RD. SUITE 100
 KATY, TEXAS 77450



ISSUE DATE: 11/01/23
 PROJECT #: 372K-1358K
 DRAWN BY: DR
 CHECKED BY: SL/BC

MILLWORK
 A-4.1

PLEASE VISIT OUR SITE FOR MORE PROJECTS OF THIS TYPE.



5. DESIGN PROGRESSION



1. SITE INFO

1. Site visit.
2. Field measurements.
3. Photo-taking.
4. MEP gather information.



2. AS BUILT

1. Draft in CAD the plans from the field measurements hand drawing.



3. SCHEMATIC DESIGN

1. Design Options.
2. Client comments.
3. Updated drawings.
4. Approved drawings.



4. RENDERS

1. 3D and Rendering.
2. Interior Design.



5. CONSTRUCTION DRAWINGS

- | | |
|--------------------------|----------------------------|
| 1. Cover Sheet. | 8. Equipment Plan. |
| 2. General Notes. | 9. Reflected Ceiling Plan. |
| 3. Accesibility Plan | 10. Finish Plan. |
| 4. Accesibility Details. | 11. Interior elevations. |
| 5. UL Listings. | 12. Millwork. |
| 6. Life Safety. | |
| 7. Floor Plans. | |

6. OUR VALUES



INNOVATION

Innovation is at the core of our approach to drafting services. We continuously explore cutting-edge technologies and design methodologies to push the boundaries of what is possible in sustainable and smart architecture.



INTEGRITY

Integrity forms the foundation of our relationships with clients, partners, and our community. We operate with transparency, honesty, and respect, ensuring our actions consistently reflect our commitment to ethical practices and quality service.



EXCELLENCE

Excellence guides our pursuit of creating exceptional spaces. We are dedicated to maintaining the highest standards of quality in our designs, services, and client interactions, ensuring every project we undertake is executed with precision and care.



SOCIAL IMPACT

Eco Smart Architecture is more than just a firm. Through our work, we aim to contribute positively to communities, foster eco-conscious living, and leave a legacy for future generations.









7. OUR TEAM



Comprised of talented professional drafters with a shared passion for eco-conscious and smart architecture, our team brings together a diverse range of expertise with residential and commercial projects, creativity, and technical skills in CAD (Computer-Aided Design), Rendering and BIM (Building Information Modeling).

8. WHY US


When you hire us, you will gain:

-  Cost Efficiency.
-  Reduced Environmental Footprint.
-  Enhanced Focus on Core Activities.
-  Access to Specialized Skills and Latest Technologies.
-  Quality Assurance and Innovation.
-  Risk Mitigation.
-  Scalability and Flexibility.
-  Faster Project Turnaround.

GET IN CONTACT

 contact@ecosmart-architecture.com

 +1 (754) 243 - 8229

 Florida - USA

**Custom drafting, Your vision, our blueprint.
We want to know about your next project.**

Get In Touch Today!

You can find us on:



THANK YOU



**ECO SMART
ARCHITECTURE**



WWW.ECOSMART-ARCHITECTURE.COM