

Enterprise Lagoon Feb 2019



Core Sampling the Sludge



Very Little To No
Water.
Depth of Sludge
is 5 to 6 Feet



The average depth of this lagoon before the foot of water added, was 5 feet. We were unable to get a full core sample due to the compacted sludge. (See the Video on the next slide.)



(Click on to
see video.)
The Sludge
was to thick
to go into the
Lagoon Core
Sampler



The Lagoon Before we
started Degrading



There wasn't enough water to
float the Lagoon Crawler when
We First Started



March 20, 2019 Starting
Day



Beginning Treatment



Breaking Up the Vegetation while Degrading



Degrading in Action



After Degrading the Bulked-Up
Sludge, we then do a Final
Degrade Treatment.







The Water Level was Dropped almost 3 feet Right After we Degraded the Sludge. This was the Area that was Solid!

March 2019
Before Treatment



After Degrading Treatment



- Add 2 ½ to 3 feet of water to Core Sampler for dropped Lagoon Level after Degradation
- Water level was at 6 Feet when treated.
- Notice suspended matter isn't thick.



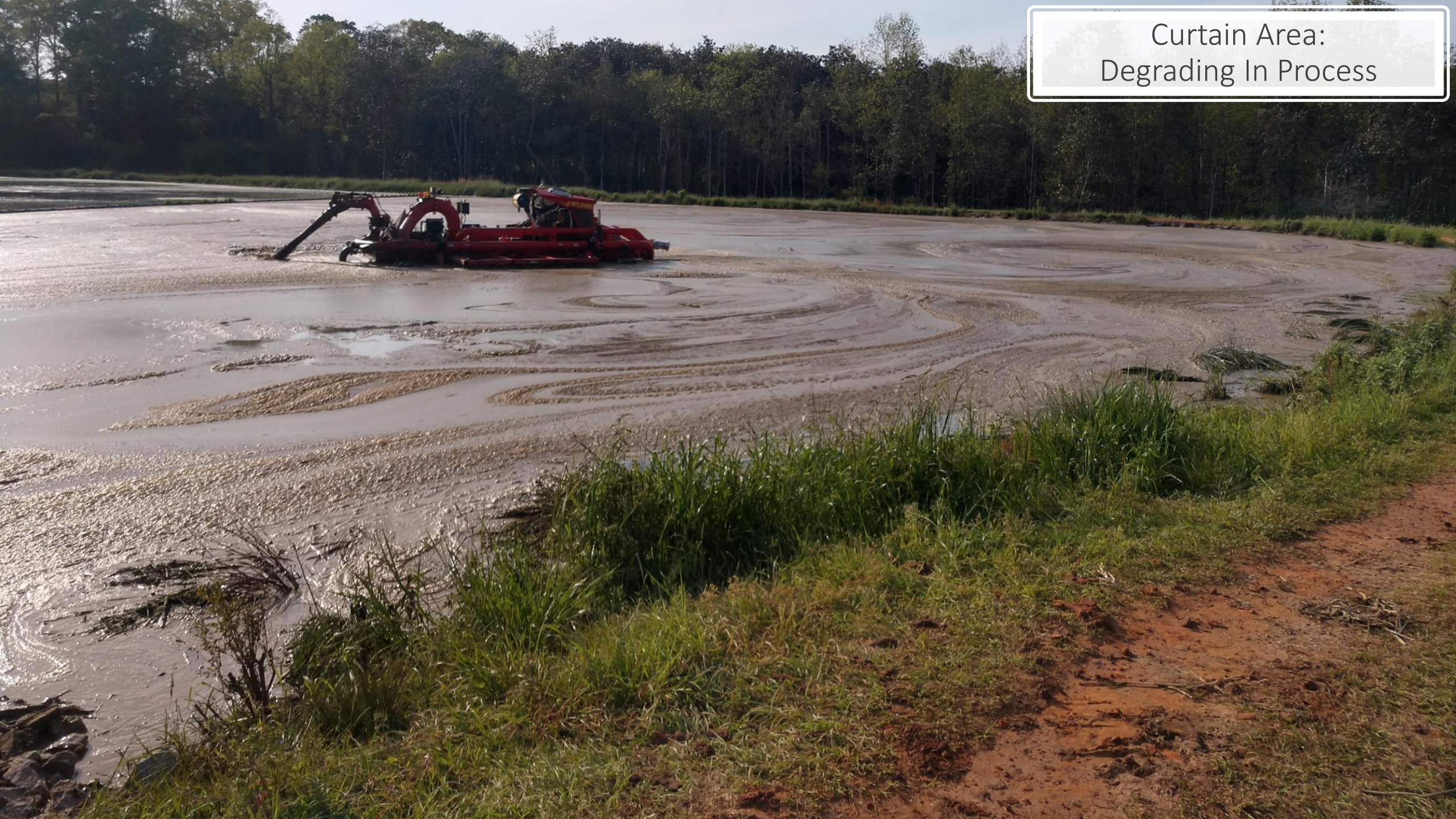
Curtain Area:
With the initial Sludge
Depths, there was only 4-6
inches of water available.



Curtain Area:
Degrading In Process



Curtain Area:
Degrading In Process



Curtain Area:
After Treatment




Curtain Area



4 to 6 inches of water available

This photograph shows a pond with a thick layer of green algae on its surface. In the foreground, there is a concrete structure with a metal grate. The background is a dense line of trees under a blue sky with some clouds.



4 Feet of Water Available

This photograph shows the same pond with clear, dark water. The concrete structure with the metal grate is visible in the foreground. A line of dark, cylindrical floats is visible in the water. The background is a dense line of trees under a blue sky with some clouds.

Both Areas of the Lagoon





Before Degrading



After Degrading

Degrade Treatment
Completed

