



Village of Grand Beach/Michiana Police Facilities

February 12, 2025

Introduction: The Council is working on developing a survey of the Village residents to determine the support for modernizing our police facilities and the potential funding for this project. Public input on this project is welcome.

Background: Grand Beach and Michiana share a police force which provides 24/7 coverage of both villages pursuant to a joint policing agreement. Under the agreement, each Village equally shares the direct and indirect cost of supporting a 24/7 shared police operation, including personnel, equipment and facilities. Each Village currently has two full time police officers. There is a full time Police Chief, Ryan Layman, who is technically an employee of Michiana, but whose time is equally divided between the two villages. There are also several part time officers. The current call volume has steadily increased over the last year, increasing by 80 calls from last year. The cases the Department sees are becoming increasingly complex and require more investigation (e.g. financial crimes, identity fraud, etc.),

Currently each Village has its own Police Station. In both cases, that police station is a single room which does not have the capacity to be expanded. The Michiana station was originally a storage closet in the Village Hall which was built in the 1950's. The Grand Beach facility was built in the 1980's. The Grand Beach station is a single room (12' x 11') office and a small unheated bathroom which is part of the garage. With a combined police force, there is not adequate space to house all equipment and supplies in one location. The department currently has 3 patrol vehicles, one ATV, a speed radar trailer, ammunition and firearms. Our facilities do not currently meet the legal standards required by the State of Michigan and the FBI to allow the department to directly access criminal history information or driver's license information. Instead, the department must take the additional step of going through a dispatch center to get such basic information. That takes time and makes investigations more difficult.

Current Operational Facility Limitations:

- A combined police force providing 24x7 coverage operating out of separate facilities
- Limited operating space and not expandable
- No security barriers between the officers and the general public
- No physical space to interview crime suspects or victims
- Very limited privacy for the Chief of Police
- Very limited physical space for breaks, inter-departmental meetings, shift changes and training sessions

Current Functional Facilities Limitations:

- Not energy efficient
- No secure entry points
- No way to properly secure ammunition for training
- No way to properly secure evidence
- No separate restrooms for male/female officers
- Workflow issues connected with maintaining files in two separate facilities
- Officers currently share a workspace/computer which creates data security issues and violates FBI policy
- No evidence room which creates chain of custody issues when prosecuting certain crimes
- No changing room for officers before/after a shift change
- There is no dedicated, secure space for storage and maintenance of equipment, vehicles, uniforms and armory•Because of severe space constraints, the department does not have adequate data security and data privacy protections in place, some of which violate federal legal standards for local police facilities

What is the Opportunity?

Chief Layman will tell you that 90% of effective policing is simply being visible to the community. This is an opportunity to make the residents of Grand Beach/Michiana safer by creating a new police facility that is much more visible, efficient, legally compliant, and also fixes the operational and functional limitations created by the current aged facilities. It could also greatly assist Chief Layman in attracting and retaining quality candidates to serve as patrol officers. It could take advantage of a vacant 4 acre parcel along the frontage road in the Golfmore Estates Subdivision which the Village of Grand Beach already owns.

Potential Funding of a new police facility: How do we fund a new Police Station? Based on the current thoughts which still need to be reviewed by a professional designer to develop the requirements for a Police Station and provide a preliminary budget, the project could benefit from a 4 acre undeveloped lot in the Golfmore Estates Subdivision in Grand Beach that is already owned by Grand Beach. The cost for construction of the new Station would be split equally between Grand Beach and Michiana. The potential funding sources we have identified are:

1) **[Potential] Federal Community Project Funding:** Congressman Tim Walberg's (5th District) Office. Congressman Walberg recently sent a district representative to tour the current Grand Beach/Michiana police facilities. As a follow-up to that site visit, representatives of Grand Beach (Ed Brandes) and Michiana (Tim McCarthy) are planning to collaborate on a joint application for federal funds to pay for at least part of the construction costs for a new police facility.

2) **A Police station millage.** Establishing a millage specifically for the construction of a new police facility would raise approximately \$200,000 annually.

3) **An Assessment.** An assessment is similar to a millage in that it is a tax, but it is not voted on by the residents like a Millage is. The Village Council votes on initiating an assessment. An assessment of \$500 per house per year would raise \$235,000 on an annual basis. An assessment for a period of 3 to 5 years would cover the cost of a new Police Station. With an assessment, those funds can only be used for the specific project they are approved to be used for.

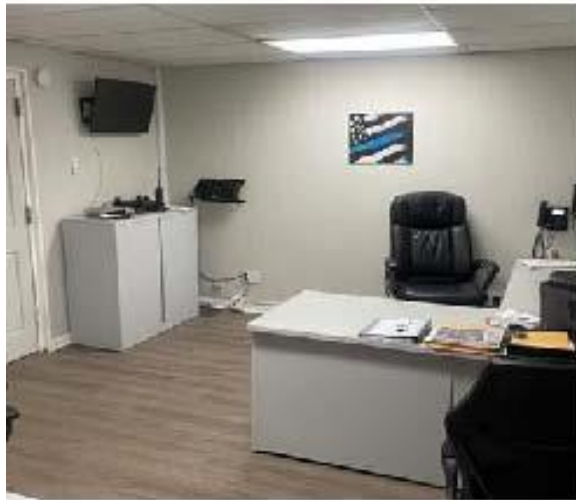
4) **Private Grants and Donations.** We are currently researching grants. Donations to the project are very welcome and every little bit will help.

Conclusion: The current facilities for Grand Beach and Michiana are not adequate for 21st Century policing challenges. A new facility would allow the Department to maintain and project a professional image. It would be a department that is clearly visible to the community and the public at large. It would be a department that can recruit and maintain officers of high character with high-level police skills.

Grand Beach Station:



Michiana Station:



Locker Room



Evidence Room



