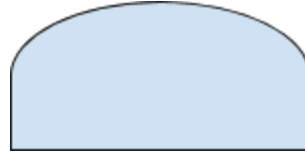


Steel-Reinforced Concrete Arch

Basic Structure

- 8' tall walls (26 yards) and an arched roof that peaks at 15' (35 yards)
- Concrete Walls are 12" thick (26 yards)
- Concrete Roof is 9' thick
- 6' awning over front and back ends



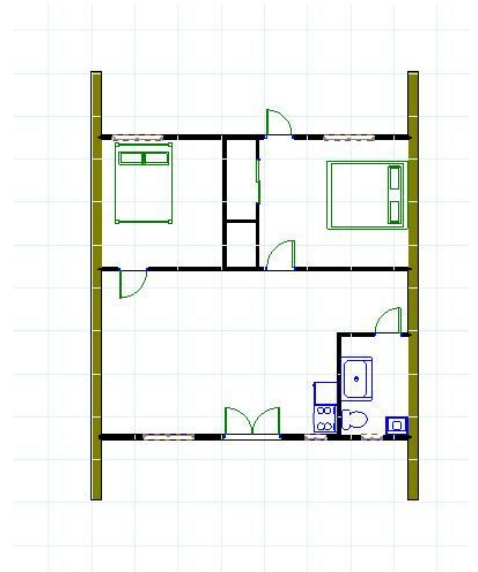
Open-Ended Arch

Features:

- 2 bedroom, 1 bathroom & great room with kitchenette
- 24' wide X 28' long =784 sq ft
- 6 foot deep front and back covered patios.
- Cabin for 2-4 people

Estimate Materials & Costs

Concrete = 82 yards X \$93 per yard =	\$7,626
Arch Form with shipping =	\$5,000
Rebar & mesh =	\$2,000
Weather and insulation =	\$1,800
Drainage	\$1,200
Wood framing and Drywall =	\$2,800
Electric & Plumbing =	\$1,200
Flooring =	\$1,300
Skylights X4 =	\$900
Windows X5 =	\$1,400
Doors (3 exterior, 3 interior, 3 closet) =	\$1,800
Appliances	\$3,400



Total estimate is under \$30,000

Hillside Hobbit Studio

Features:

- Great Room Studio with bath
- 20' wide X 20' deep = 382 sq ft
- 6 foot deep front covered patio.
- Cabin for 1-2 people

Estimate Materials & Costs

Concrete = 44 yards X \$93 per yard =	\$4,092
Arch Form with shipping =	\$3,500
Rebar & mesh =	\$1,400
Weather and insulation =	\$1,300
Drainage	\$1,500
Wood framing and Drywall =	\$1,200
Electric & Plumbing =	\$900
Flooring =	\$700
Skylight =	\$200
Windows X2 =	\$400
Doors (1 exterior, 1 interior) =	\$700
Appliances	\$1,400

Total estimate is under \$18,000

