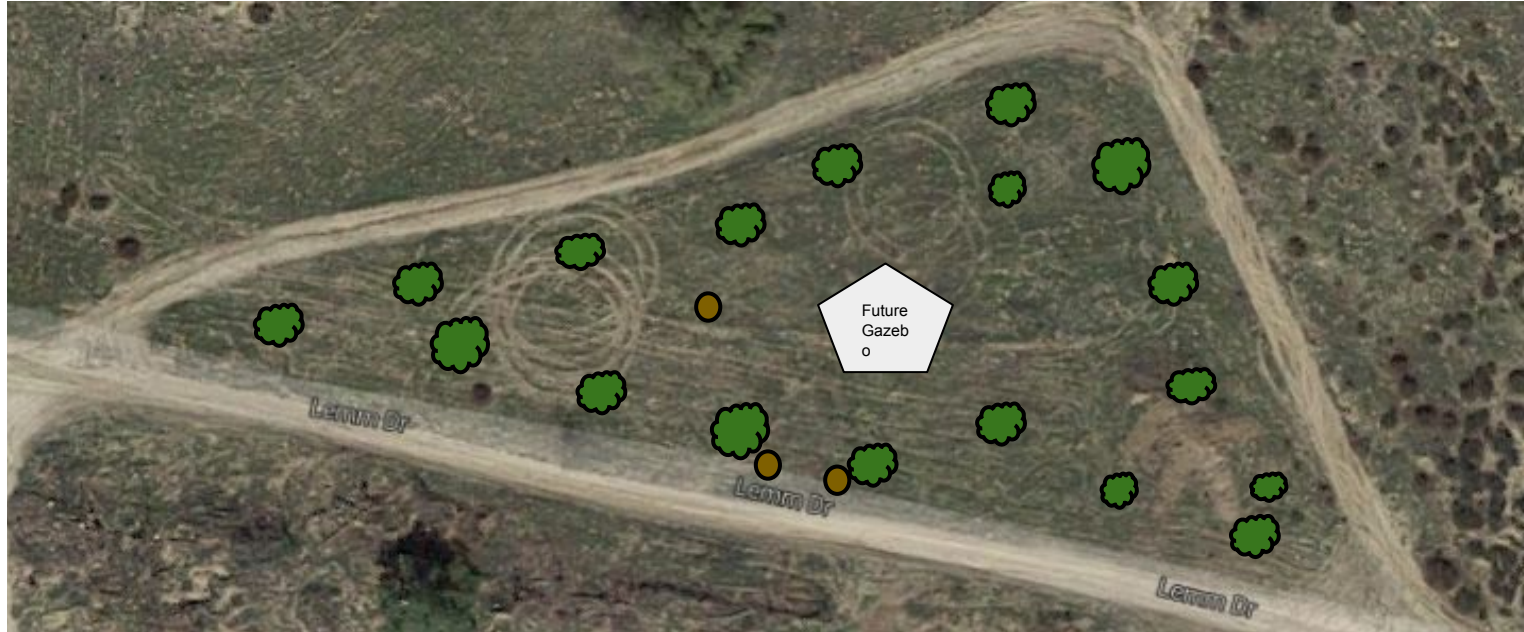


## Triangle Food Forest Phase 1

Initial trees are planted in a nonlinear fashion around the inside perimeter of the triangle area. The trees will be randomly ordered as complementary (but younger and smaller) trees will be introduced in coming years. This will allow an older growth green canopy to establish around the entire area. Vegetables can be grown in the shade provided around each tree and grape vines or berries can be integrated into the fruit trees for a growing trellis. The center area will be left bare for first years to provide space for a gazebo or other centralized meeting and tranquility areas.













Resting and meeting areas...













Integrating scrap metal from containers...









Trash Art throughout...





Perhaps a small water feature...

