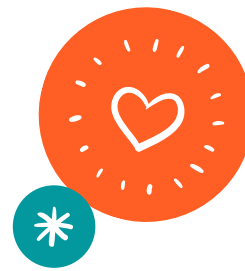


# Seattle Special Education PTSA ANNUAL REPORT | 2021 REPORT 2022



We assist families of students with disabilities as they navigate the education system.

We build bridges between the general and special education communities in order to bring increased educational resources and opportunities for all students.

We partner with parents and educators as we advocate for improvements in the special education system.



Together, with the support of our community partners and 84 PTSA members, we hosted 43 virtual presentations, with over 1,500 total attendees.



<p><b>FOCUS AREAS:</b></p> <p><b>Inclusionary Practices</b> <b>Restraint and Isolation</b> <b>Dyslexia</b></p> <p><b>ACTIONS &amp; ADVOCACY:</b> <b>Legislative Advocacy</b></p> <p>Joined SEA in protest at district headquarters to push for Needs Not Numbers</p> <p>Board member on WA PTA Family Engagement Committee</p> <p>Board Member on SPS Special Education Task Force</p> <p>Member of OSPI SLD Implementation &amp; Transition Workgroup</p>	<p><b>PRESENTATION TOPICS:</b></p> <ul style="list-style-type: none"> <li>• Recovery Services</li> <li>• Soft Landing/Welcome to SPS</li> <li>• School Refusal</li> <li>• Community Conversation about Inclusion</li> <li>• Assistive Technology/AAC</li> <li>• Community Complaints to OSPI</li> <li>• Sensory Regulation</li> <li>• Levy Presentation</li> <li>• 10 Tips for Advocating for your Child</li> <li>• Community Conversation about Violence and Disability</li> <li>• Science of Reading</li> <li>• Dyslexia</li> <li>• Literacy Advocacy</li> </ul>	<p><b>ORIGINAL CONTENT:</b></p> <ul style="list-style-type: none"> <li>• Virtual Reading Rooms for Disability History Month</li> <li>• 10 part "Did You Know" series about early literacy screening laws in WA state.</li> <li>• K-2 Early Literacy Screening Family Survey</li> <li>• Getting to Results: A Guide to Special Education in Seattle Public Schools</li> </ul>
--	--	--



## GUEST SPEAKERS AND COMMUNITY PARTNERS:

